



Compressor
Voltage Code : FZ

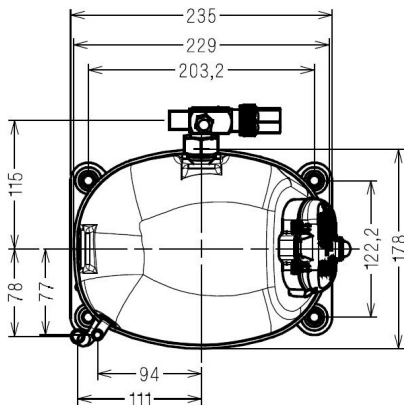
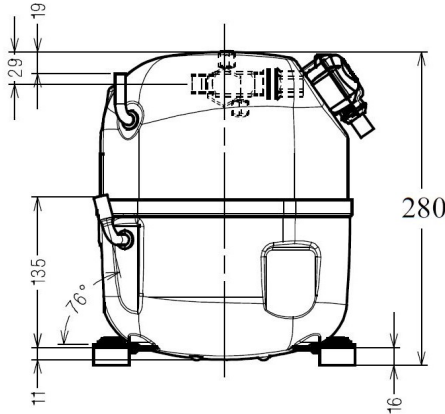
AJ4519P-FZ

High Temp. Commercial (HP)

220 - 240V 1~ 50 Hz

R452A / R404A / R448A / R449A / R455A / R454C AJ4519P-FZ3A

Conditions	Frequency	Nominal Cooling Capacity		Sound Power ISO3745 / ISO 3743-1
		Watts	BTU/h	
Standard TE / R452A	50 Hz	4663	15902	68 dBA
Standard TE / R404A	50 Hz	4593	15661	68 dBA
Standard TE / R448A	50 Hz	4762	16237	68 dBA
Standard TE / R449A	50 Hz	4759	16227	68 dBA
Standard TE / R455A	50 Hz	4735	16147	68 dBA
Standard TE / R454C	50 Hz	4291	14633	68 dBA



Displacement (cc)	34,45
Net Weight (Kg)	22.2
Oil Quantity (cc)	475.0
Oil Type	Polyolester
Expansion Device	Capillary_Tube/Expansion_Valve
Cooling	Fan
Main Winding (Ohm)	1.3
Start Winding (Ohm)	5.9
Current	
RLA (A)	10,4
MCC (A)	16,8
LRA (A)	48
Electrical Equipment	CSR
Overload	T0770
Time Check	2.8s - 5.2s / 48.5 A
Open Temp	135° C
Close Temp	61° C
Optional	MST00AEW
Start Capacitor	100 µF / 250 V
Run Capacitor	25 µF / 400 V
Potential Relay	RVA6M**
Pick Up	239/268V
Drop Out	60/135V
Refrigerating connection for	
Suction Tube	15.9 (5/8")
Discharge Tube	9.5 (3/8")
Process Tube	6.35 (1/4")

* Standard TE : T°Cond. 54.5°C / T°Evap. 7.2°C / T°Superheat. 11.0°C
T°Subcooling. 8.3K

Certificates :



Note : Tecumseh reserves the right to change information contained in this document without notification.

Selection program - V4.6_2023296 - 10/25/2023



Tecumseh

AJ4519P-FZ	Tension FZ : 220 - 240V 1~ 50 Hz
-------------------	---

Les performances sont données dans les conditions Standard TE :	Surchauffe :	11.0 K
Condition Mid	Sous refroidissement :	8.3 K
The performance data are in Standard TE conditions :	Superheat :	11.0 K
Mid Condition	Subcooling :	8.3 K

50 Hz R452A											
											N°3625
4 T condensation	5 T évaporation	(°C)	-25	-20	-15	-10	-5	0	5	10	15
30	1 P frigorifique	(Watt)		2111	2760	3529	4439	5512	6771	8242	9949
	2 P absorbée	(W)		1103	1214	1315	1408	1491	1563	1624	1674
	3 I absorbée	(A)		5.81	6.28	6.72	7.14	7.55	7.93	8.29	8.64
40	1 P frigorifique	(Watt)			2266	2941	3734	4669	5770	7062	8575
	2 P absorbée	(W)			1291	1426	1556	1683	1804	1919	2028
	3 I absorbée	(A)			6.66	7.27	7.86	8.43	8.99	9.52	10.0
50	1 P frigorifique	(Watt)				2330	2998	3785	4716	5820	7128
	2 P absorbée	(W)				1516	1678	1841	2003	2165	2326
	3 I absorbée	(A)				7.72	8.48	9.22	9.95	10.7	11.3
60	1 P frigorifique	(Watt)					2273	2907	3664	4576	5679
	2 P absorbée	(W)					1800	1992	2189	2391	2597
	3 I absorbée	(A)					8.99	9.91	10.8	11.7	12.5

50 Hz R404A											
											N°3623
4 T condensation	5 T évaporation	(°C)	-25	-20	-15	-10	-5	0	5	10	15
30	1 P frigorifique	(Watt)	1601	2139	2772	3519	4400	5434	6645	8057	9695
	2 P absorbée	(W)	1006	1123	1230	1326	1412	1487	1549	1599	1636
	3 I absorbée	(A)	5.50	5.96	6.40	6.81	7.20	7.56	7.90	8.21	8.50
40	1 P frigorifique	(Watt)		1723	2291	2951	3722	4626	5686	6927	8379
	2 P absorbée	(W)		1182	1317	1446	1569	1686	1797	1900	1994
	3 I absorbée	(A)		6.21	6.81	7.39	7.94	8.47	8.98	9.46	9.92
50	1 P frigorifique	(Watt)			1789	2351	3001	3762	4658	5716	6969
	2 P absorbée	(W)			1392	1546	1700	1853	2004	2152	2298
	3 I absorbée	(A)			7.14	7.89	8.61	9.31	9.98	10.6	11.3
60	1 P frigorifique	(Watt)				1757	2279	2888	3611	4477	5525
	2 P absorbée	(W)				1659	1836	2017	2201	2388	2577
	3 I absorbée	(A)				8.31	9.20	10.1	10.9	11.7	12.5

1 = cooling capacity 2 = power input 3 = current 4 = condensing temperature 5 = evaporating temperature

Nota : Tecumseh se réserve le droit de modifier les informations contenues dans ce document sans préavis.

Note : Tecumseh reserves the right to change information contained in this document without notification.

© 2023 Tecumseh Products Company
All rights reserved



Tecumseh

AJ4519P-FZ	Tension FZ : 220 - 240V 1~ 50 Hz
-------------------	---

Les performances sont données dans les conditions Standard TE :	Surchauffe :	11.0 K
Condition Mid	Sous refroidissement :	8.3 K
The performance data are in Standard TE conditions :	Superheat :	11.0 K
Mid Condition	Subcooling :	8.3 K

50 Hz R448A (*)											
											N°3626
4 T condensation	5 T évaporation	(°C)	-25	-20	-15	-10	-5	0	5	10	15
30	1 P frigorifique	(Watt)	1490	2034	2677	3437	4335	5392	6630	8070	9737
	2 P absorbée	(W)	942	1051	1155	1253	1344	1425	1495	1553	1598
	3 I absorbée	(A)	5.06	5.51	5.96	6.39	6.81	7.20	7.57	7.92	8.23
40	1 P frigorifique	(Watt)		1645	2220	2894	3686	4618	5713	6994	8486
	2 P absorbée	(W)		1107	1237	1366	1493	1615	1732	1842	1943
	3 I absorbée	(A)		5.77	6.37	6.96	7.53	8.09	8.62	9.13	9.60
50	1 P frigorifique	(Watt)			1758	2337	3016	3816	4759	5872	7181
	2 P absorbée	(W)			1309	1465	1624	1784	1944	2101	2256
	3 I absorbée	(A)			6.69	7.45	8.20	8.93	9.64	10.3	11.0
60	1 P frigorifique	(Watt)				1803	2363	3023	3808	4745	5866
	2 P absorbée	(W)				1570	1758	1951	2150	2351	2555
	3 I absorbée	(A)				7.82	8.76	9.69	10.6	11.5	12.3

50 Hz R449A (*)											
											N°3624
4 T condensation	5 T évaporation	(°C)	-25	-20	-15	-10	-5	0	5	10	15
30	1 P frigorifique	(Watt)	1485	2029	2671	3432	4331	5389	6629	8073	9744
	2 P absorbée	(W)	941	1050	1155	1253	1343	1424	1494	1552	1597
	3 I absorbée	(A)	5.05	5.51	5.95	6.39	6.80	7.20	7.57	7.91	8.23
40	1 P frigorifique	(Watt)		1639	2214	2888	3681	4615	5711	6995	8492
	2 P absorbée	(W)		1106	1236	1366	1492	1614	1731	1841	1943
	3 I absorbée	(A)		5.76	6.36	6.95	7.53	8.08	8.62	9.12	9.60
50	1 P frigorifique	(Watt)			1751	2331	3011	3811	4756	5871	7184
	2 P absorbée	(W)			1308	1464	1623	1784	1943	2101	2255
	3 I absorbée	(A)			6.68	7.44	8.19	8.93	9.64	10.3	11.0
60	1 P frigorifique	(Watt)				1796	2356	3016	3803	4742	5865
	2 P absorbée	(W)				1569	1757	1951	2149	2351	2555
	3 I absorbée	(A)				7.82	8.76	9.68	10.6	11.5	12.3

1 = cooling capacity 2 = power input 3 = current 4 = condensing temperature 5 = evaporating temperature

(*) Veuillez vous référer strictement aux Recommandations d'Utilisation et Bulletins Marketing Tecumseh du fait de la température de refoulement élevée pour les applications LBP.
 (*) Due to very high discharge temperature especially on LBP conditions, please strictly refer to Tecumseh Guidelines & Marketing Bulletin when using this refrigerant.

Nota : Tecumseh se réserve le droit de modifier les informations contenues dans ce document sans préavis.
Note : Tecumseh reserves the right to change information contained in this document without notification.

© 2023 Tecumseh Products Company
All rights reserved



Tecumseh

AJ4519P-FZ	Tension FZ : 220 - 240V 1~ 50 Hz
-------------------	---

Les performances sont données dans les conditions Standard TE :	Surchauffe :	11.0 K
Condition Mid	Sous refroidissement :	8.3 K
The performance data are in Standard TE conditions :	Superheat :	11.0 K
Mid Condition	Subcooling :	8.3 K

50 Hz R455A											
											N°3282
4 T condensation	5 T évaporation	(°C)	-25	-20	-15	-10	-5	0	5	10	15
30	1 P frigorifique	(Watt)		2049	2685	3454	4377	5477	6778	8302	10093
	2 P absorbée	(W)		1022	1122	1221	1315	1399	1470	1525	1558
	3 I absorbée	(A)		5.68	6.11	6.51	6.88	7.22	7.53	7.79	8.00
40	1 P frigorifique	(Watt)			2207	2871	3669	4624	5762	7107	8690
	2 P absorbée	(W)			1177	1300	1425	1549	1666	1773	1866
	3 I absorbée	(A)			6.41	6.95	7.48	7.99	8.46	8.91	9.31
50	1 P frigorifique	(Watt)				2290	2960	3768	4739	5901	7283
	2 P absorbée	(W)				1355	1504	1658	1813	1964	2109
	3 I absorbée	(A)				7.27	7.96	8.64	9.30	9.94	10.5
60	1 P frigorifique	(Watt)					2281	2939	3742	4719	5902
	2 P absorbée	(W)					1567	1742	1926	2114	2301
	3 I absorbée	(A)					8.39	9.25	10.1	10.9	11.8

50 Hz R454C											
											N°3283
4 T condensation	5 T évaporation	(°C)	-25	-20	-15	-10	-5	0	5	10	15
30	1 P frigorifique	(Watt)		1828	2392	3069	3879	4840	5973	7299	8839
	2 P absorbée	(W)		946	1038	1124	1204	1279	1348	1412	1470
	3 I absorbée	(A)		5.23	5.62	5.99	6.36	6.72	7.07	7.40	7.73
40	1 P frigorifique	(Watt)			1984	2580	3289	4132	5130	6305	7682
	2 P absorbée	(W)			1104	1217	1325	1429	1529	1624	1716
	3 I absorbée	(A)			5.90	6.36	6.83	7.29	7.74	8.18	8.62
50	1 P frigorifique	(Watt)				2079	2687	3412	4275	5299	6511
	2 P absorbée	(W)				1283	1418	1550	1680	1806	1931
	3 I absorbée	(A)				6.67	7.26	7.85	8.44	9.02	9.60
60	1 P frigorifique	(Watt)					2093	2700	3428	4303	5353
	2 P absorbée	(W)					1492	1651	1809	1965	2121
	3 I absorbée	(A)					7.57	8.33	9.08	9.83	10.6

1 = cooling capacity 2 = power input 3 = current 4 = condensing temperature 5 = evaporating temperature

Nota : Tecumseh se réserve le droit de modifier les informations contenues dans ce document sans préavis.

Note : Tecumseh reserves the right to change information contained in this document without notification.

© 2023 Tecumseh Products Company
All rights reserved