



Compressor  
Voltage Code : FZ

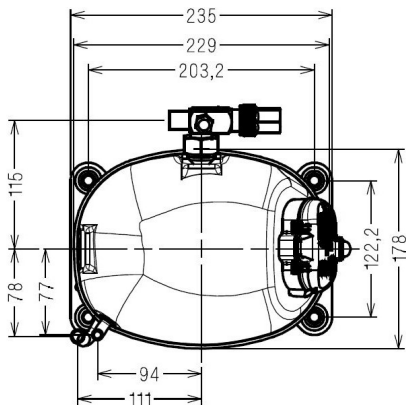
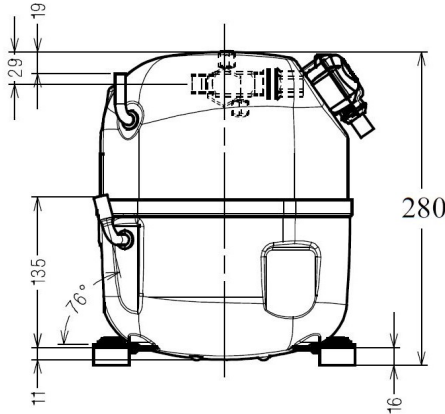
**AJ4517P-FZ**

High Temp. Commercial (HP)

220 - 240V 1~ 50 Hz

R452A / R404A / R448A / R449A / R455A / R454C AJ4517P-FZ3A

Conditions	Frequency	Nominal Cooling Capacity		Sound Power ISO3745 / ISO 3743-1
		Watts	BTU/h	
Standard TE / R452A	50 Hz	3668	12506	64 dBA
Standard TE / R404A	50 Hz	3595	12258	64 dBA
Standard TE / R448A	50 Hz	3736	12740	64 dBA
Standard TE / R449A	50 Hz	3734	12732	64 dBA
Standard TE / R455A	50 Hz	3804	12971	64 dBA
Standard TE / R454C	50 Hz	3424	11676	64 dBA



\* Standard TE : T°Cond. 54.5°C / T°Evap. 7.2°C / T°Superheat. 11.0°C  
T°Subcooling. 8.3K

Certificates :



<b>Displacement (cc)</b>	25,95
<b>Net Weight (Kg)</b>	22.1
<b>Oil Quantity (cc)</b>	475.0
<b>Oil Type</b>	Polyolester
<b>Expansion Device</b>	Capillary_Tube/Expansion_Valve
<b>Cooling</b>	Fan
<b>Main Winding (Ohm)</b>	2.0
<b>Start Winding (Ohm)</b>	7.6
<b>Current</b>	
RLA (A)	7,6
MCC (A)	12
LRA (A)	42.2
<b>Electrical Equipment</b>	CSR
<b>Overload</b>	MST16AHW
Time Check	2.8s - 5.2s / 32.5 A
Open Temp	135° C
Close Temp	61° C
Optional	T0653
<b>Start Capacitor</b>	88 µF / 330 V
<b>Run Capacitor</b>	17.5 µF / 400 V
<b>Potential Relay</b>	RVA6M**
Pick Up	239/268V
Drop Out	60/135V
<b>Refrigerating connection for</b>	
Suction Tube	15.9 (5/8")
Discharge Tube	9.5 (3/8")
Process Tube	6.35 (1/4")

Note : Tecumseh reserves the right to change information contained in this document without notification.

Selection program - V4.6\_2023296 - 10/25/2023



**Tecumseh**

<b>AJ4517P-FZ</b>	<b>Tension FZ : 220 - 240V 1~ 50 Hz</b>
-------------------	---

Les performances sont données dans les <b>conditions Standard TE</b> :	Surchauffe :	11.0 K
Condition Mid	Sous refroidissement :	8.3 K
The performance data are in <b>Standard TE conditions</b> :	Superheat :	11.0 K
Mid Condition	Subcooling :	8.3 K

<b>50 Hz R452A</b>											
											<b>N°3616</b>
4   T condensation	5   T évaporation	(°C)	-25	-20	-15	-10	-5	0	5	10	15
<b>30</b>	1   P frigorifique	(Watt)		1654	2150	2739	3436	4259	5226	6356	7670
	2   P absorbée	(W)		849	932	1006	1071	1126	1172	1209	1235
	3   I absorbée	(A)		4.28	4.63	4.96	5.29	5.62	5.94	6.27	6.61
<b>40</b>	1   P frigorifique	(Watt)			1767	2288	2900	3622	4472	5471	6641
	2   P absorbée	(W)			985	1088	1185	1276	1361	1441	1514
	3   I absorbée	(A)			4.90	5.34	5.77	6.19	6.59	6.99	7.39
<b>50</b>	1   P frigorifique	(Watt)				1820	2343	2959	3687	4549	5572
	2   P absorbée	(W)				1144	1267	1388	1507	1623	1737
	3   I absorbée	(A)				5.64	6.20	6.75	7.27	7.79	8.29
<b>60</b>	1   P frigorifique	(Watt)					1794	2302	2909	3637	4516
	2   P absorbée	(W)					1339	1483	1629	1776	1924
	3   I absorbée	(A)					6.50	7.21	7.90	8.56	9.21

<b>50 Hz R404A</b>											
											<b>N°3614</b>
4   T condensation	5   T évaporation	(°C)	-25	-20	-15	-10	-5	0	5	10	15
<b>30</b>	1   P frigorifique	(Watt)	1269	1678	2163	2736	3413	4211	5145	6236	7502
	2   P absorbée	(W)	781	862	937	1007	1074	1139	1203	1266	1330
	3   I absorbée	(A)	4.00	4.35	4.68	5.01	5.32	5.63	5.93	6.23	6.53
<b>40</b>	1   P frigorifique	(Watt)		1352	1787	2295	2890	3588	4409	5371	6497
	2   P absorbée	(W)		909	1007	1100	1189	1274	1357	1438	1519
	3   I absorbée	(A)		4.56	4.99	5.40	5.80	6.19	6.58	6.95	7.33
<b>50</b>	1   P frigorifique	(Watt)			1396	1831	2338	2932	3631	4458	5437
	2   P absorbée	(W)			1053	1174	1290	1401	1509	1614	1718
	3   I absorbée	(A)			5.21	5.75	6.27	6.78	7.28	7.77	8.25
<b>60</b>	1   P frigorifique	(Watt)				1368	1782	2266	2841	3531	4363
	2   P absorbée	(W)				1222	1370	1513	1652	1787	1919
	3   I absorbée	(A)				5.97	6.65	7.31	7.96	8.59	9.21

1 = cooling capacity 2 = power input 3 = current 4 = condensing temperature 5 = evaporating temperature

**Nota : Tecumseh se réserve le droit de modifier les informations contenues dans ce document sans préavis.**

**Note : Tecumseh reserves the right to change information contained in this document without notification.**

© 2023 Tecumseh Products Company  
All rights reserved



**Tecumseh**

<b>AJ4517P-FZ</b>	<b>Tension FZ : 220 - 240V 1~ 50 Hz</b>
-------------------	---

Les performances sont données dans les <b>conditions Standard TE</b> :	Surchauffe :	11.0 K
Condition Mid	Sous refroidissement :	8.3 K
The performance data are in <b>Standard TE conditions</b> :	Superheat :	11.0 K
Mid Condition	Subcooling :	8.3 K

<b>50 Hz R448A (*)</b>											
											<b>N°3617</b>
4   T condensation	5   T évaporation	(°C)	-25	-20	-15	-10	-5	0	5	10	15
<b>30</b>	1   P frigorifique	(Watt)	1176	1591	2084	2669	3361	4176	5132	6246	7535
	2   P absorbée	(W)	728	805	879	950	1020	1088	1155	1221	1287
	3   I absorbée	(A)	3.70	4.03	4.36	4.69	5.02	5.34	5.66	5.97	6.27
<b>40</b>	1   P frigorifique	(Watt)		1287	1729	2249	2862	3584	4433	5428	6587
	2   P absorbée	(W)		849	945	1039	1130	1219	1305	1390	1474
	3   I absorbée	(A)		4.23	4.66	5.08	5.50	5.91	6.31	6.70	7.09
<b>50</b>	1   P frigorifique	(Watt)			1370	1822	2352	2978	3716	4588	5615
	2   P absorbée	(W)			987	1111	1231	1347	1461	1573	1682
	3   I absorbée	(A)			4.86	5.42	5.97	6.51	7.04	7.56	8.07
<b>60</b>	1   P frigorifique	(Watt)				1406	1852	2379	3005	3753	4645
	2   P absorbée	(W)				1152	1308	1461	1609	1755	1897
	3   I absorbée	(A)				5.61	6.33	7.04	7.74	8.43	9.11

<b>50 Hz R449A (*)</b>											
											<b>N°3615</b>
4   T condensation	5   T évaporation	(°C)	-25	-20	-15	-10	-5	0	5	10	15
<b>30</b>	1   P frigorifique	(Watt)	1172	1587	2080	2665	3357	4174	5131	6248	7540
	2   P absorbée	(W)	727	804	878	950	1019	1088	1155	1221	1286
	3   I absorbée	(A)	3.69	4.03	4.36	4.69	5.02	5.34	5.65	5.97	6.27
<b>40</b>	1   P frigorifique	(Watt)		1282	1725	2245	2858	3581	4432	5429	6592
	2   P absorbée	(W)		848	945	1038	1129	1218	1305	1390	1473
	3   I absorbée	(A)		4.23	4.66	5.08	5.49	5.90	6.31	6.70	7.09
<b>50</b>	1   P frigorifique	(Watt)			1365	1817	2348	2974	3714	4588	5617
	2   P absorbée	(W)			987	1110	1230	1347	1461	1572	1682
	3   I absorbée	(A)			4.86	5.42	5.96	6.51	7.04	7.56	8.07
<b>60</b>	1   P frigorifique	(Watt)				1401	1847	2374	3001	3750	4644
	2   P absorbée	(W)				1151	1308	1460	1609	1755	1898
	3   I absorbée	(A)				5.60	6.33	7.04	7.74	8.43	9.11

1 = cooling capacity 2 = power input 3 = current 4 = condensing temperature 5 = evaporating temperature

(\*) Veuillez vous référer strictement aux Recommandations d'Utilisation et Bulletins Marketing Tecumseh du fait de la température de refoulement élevée pour les applications LBP.  
 (\*) Due to very high discharge temperature especially on LBP conditions, please strictly refer to Tecumseh Guidelines & Marketing Bulletin when using this refrigerant.

**Nota : Tecumseh se réserve le droit de modifier les informations contenues dans ce document sans préavis.**

**Note : Tecumseh reserves the right to change information contained in this document without notification.**

© 2023 Tecumseh Products Company  
All rights reserved



**Tecumseh**

<b>AJ4517P-FZ</b>	<b>Tension FZ : 220 - 240V 1~ 50 Hz</b>
-------------------	---

Les performances sont données dans les <b>conditions Standard TE</b> :	Surchauffe :	11.0 K
Condition Mid	Sous refroidissement :	8.3 K
The performance data are in <b>Standard TE conditions</b> :	Superheat :	11.0 K
Mid Condition	Subcooling :	8.3 K

<b>50 Hz R455A</b>											
											<b>N°3280</b>
4   T condensation	5   T évaporation	(°C)	-25	-20	-15	-10	-5	0	5	10	15
<b>30</b>	1   P frigorifique	(Watt)		1616	2150	2788	3548	4446	5501	6732	8172
	2   P absorbée	(W)		807	877	940	994	1040	1078	1106	1125
	3   I absorbée	(A)		4.07	4.37	4.64	4.88	5.09	5.26	5.38	5.47
<b>40</b>	1   P frigorifique	(Watt)			1727	2278	2935	3714	4635	5719	6989
	2   P absorbée	(W)			938	1027	1108	1181	1246	1303	1351
	3   I absorbée	(A)			4.65	5.04	5.40	5.72	6.01	6.26	6.46
<b>50</b>	1   P frigorifique	(Watt)				1796	2350	3012	3800	4736	5844
	2   P absorbée	(W)				1090	1200	1302	1398	1485	1564
	3   I absorbée	(A)				5.32	5.83	6.30	6.73	7.13	7.48
<b>60</b>	1   P frigorifique	(Watt)					1815	2361	3018	3809	4762
	2   P absorbée	(W)					1269	1403	1530	1650	1762
	3   I absorbée	(A)					6.07	6.72	7.33	7.90	8.43

<b>50 Hz R454C</b>											
											<b>N°3281</b>
4   T condensation	5   T évaporation	(°C)	-25	-20	-15	-10	-5	0	5	10	15
<b>30</b>	1   P frigorifique	(Watt)		1401	1867	2422	3083	3865	4783	5856	7100
	2   P absorbée	(W)		735	799	856	907	952	991	1025	1053
	3   I absorbée	(A)		3.73	4.00	4.25	4.48	4.68	4.86	5.00	5.12
<b>40</b>	1   P frigorifique	(Watt)			1523	2013	2595	3285	4100	5058	6179
	2   P absorbée	(W)			856	934	1006	1071	1129	1181	1226
	3   I absorbée	(A)			4.25	4.60	4.92	5.21	5.47	5.71	5.92
<b>50</b>	1   P frigorifique	(Watt)				1602	2103	2698	3405	4245	5238
	2   P absorbée	(W)				992	1090	1181	1265	1341	1411
	3   I absorbée	(A)				4.85	5.29	5.71	6.09	6.45	6.77
<b>60</b>	1   P frigorifique	(Watt)					1629	2127	2725	3444	4308
	2   P absorbée	(W)					1149	1273	1389	1496	1596
	3   I absorbée	(A)					5.54	6.11	6.64	7.15	7.62

1 = cooling capacity 2 = power input 3 = current 4 = condensing temperature 5 = evaporating temperature

**Nota : Tecumseh se réserve le droit de modifier les informations contenues dans ce document sans préavis.**

**Note : Tecumseh reserves the right to change information contained in this document without notification.**

© 2023 Tecumseh Products Company  
All rights reserved