



Compressor  
Voltage Code : TZ

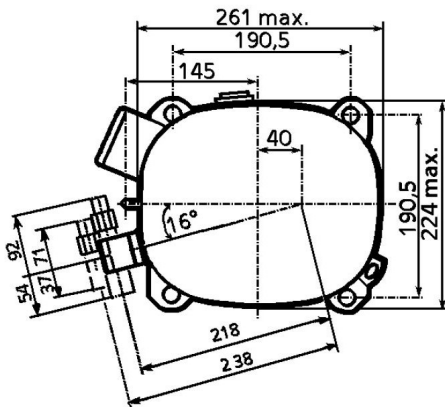
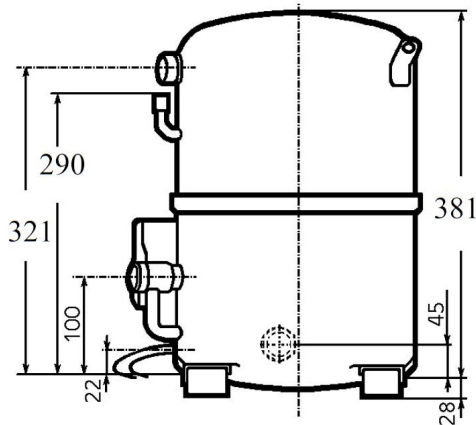
# AG4561P-TZ

High Temp. Commercial (HP)

400V 3~ 50Hz / 440V 3~ 60 Hz

R452A / R404A / R448A / R449A / R455A / R454C AG4561P-TZ1A

| Conditions          | Frequency     | Nominal Cooling Capacity |               | Sound Power<br>ISO3745 / ISO 3743-1 |
|---------------------|---------------|--------------------------|---------------|-------------------------------------|
|                     |               | Watts                    | BTU/h         |                                     |
| Standard TE / R452A | 50 Hz / 60 Hz | 13826 / 17208            | 47146 / 58678 | 83 dBA                              |
| Standard TE / R404A | 50 Hz / 60 Hz | 13558 / 16888            | 46233 / 57589 | 83 dBA                              |
| Standard TE / R448A | 50 Hz / 60 Hz | 14156 / 17593            | 48272 / 59992 | 83 dBA                              |
| Standard TE / R449A | 50 Hz / 60 Hz | 14144 / 17582            | 48230 / 59954 | 83 dBA                              |
| Standard TE / R455A | 50 Hz / 60 Hz | 15078 / 17985            | 51415 / 61328 | 83 dBA                              |
| Standard TE / R454C | 50 Hz / 60 Hz | 13359 / 15825            | 45553 / 53963 | 83 dBA                              |



|                                     |                                |
|-------------------------------------|--------------------------------|
| <b>Displacement (cc)</b>            | 112,5                          |
| <b>Net Weight (Kg)</b>              | 46.0                           |
| <b>Oil Quantity (cc)</b>            | 1760.0                         |
| <b>Oil Type</b>                     | Polyolester                    |
| <b>Expansion Device</b>             | Capillary_Tube/Expansion_Valve |
| <b>Cooling</b>                      | Fan                            |
| <b>Main Winding (Ohm)</b>           | 4.0                            |
| <b>Current</b>                      |                                |
| RLA (A)                             | 9,2   9,6                      |
| MCC (A)                             | 15,3   15,8                    |
| LRA (A)                             | 59   59                        |
| <b>Electrical Equipment</b>         | TRI                            |
| <b>Overload</b>                     | Interne                        |
| <b>Refrigerating connection for</b> |                                |
| Suction Tube                        | 28.6 (1"1/8)                   |
| Discharge Tube                      | 15.9 (5/8")                    |
| Process Tube                        | 6,35 (1/4")                    |

\* Standard TE : T°Cond. 54.5°C / T°Evap. 7.2°C / T°Superheat. 11.0°C  
T°Subcooling. 8.3K

Certificates :



Note : Tecumseh reserves the right to change information contained in this document without notification.

Selection program - V4.6\_2023296 - 10/25/2023



**Tecumseh**

|                   |  |
|-------------------|--|
| <b>AG4561P-TZ</b> | <b>Tension TZ : 400V 3~ 50Hz / 440V 3~ 60 Hz</b> |
|-------------------|--|

|  |                        |        |
|--|------------------------|--------|
| Les performances sont données dans les <b>conditions Standard TE</b> : | Surchauffe :           | 11.0 K |
| Condition Mid  | Sous refroidissement : | 8.3 K  |
| The performance data are in <b>Standard TE conditions</b> :            | Superheat :            | 11.0 K |
| Mid Condition  | Subcooling :           | 8.3 K  |

| <b>50 Hz R452A</b> |                    |        |     |      |      |       |       |       |       |       |               |
|--------------------|--------------------|--------|-----|------|------|-------|-------|-------|-------|-------|---------------|
|                    |                    |        |     |      |      |       |       |       |       |       | <b>N°3584</b> |
| 4   T condensation | 5   T évaporation  | (°C)   | -25 | -20  | -15  | -10   | -5    | 0     | 5     | 10    | 15            |
| <b>30</b>          | 1   P frigorifique | (Watt) |     | 5782 | 7799 | 10270 | 13276 | 16903 | 21242 | 26390 | 32444         |
|                    | 2   P absorbée     | (W)    |     | 2762 | 3143 | 3526  | 3927  | 4361  | 4845  | 5394  | 6025          |
|                    | 3   I absorbée     | (A)    |     | 4.75 | 5.24 | 5.76  | 6.30  | 6.87  | 7.47  | 8.10  | 8.76          |
| <b>40</b>          | 1   P frigorifique | (Watt) |     |      | 6114 | 8214  | 10752 | 13813 | 17489 | 21882 | 27102         |
|                    | 2   P absorbée     | (W)    |     |      | 3239 | 3693  | 4145  | 4610  | 5105  | 5646  | 6248          |
|                    | 3   I absorbée     | (A)    |     |      | 5.31 | 5.92  | 6.56  | 7.22  | 7.91  | 8.63  | 9.38          |
| <b>50</b>          | 1   P frigorifique | (Watt) |     |      |      | 6226  | 8340  | 10880 | 13941 | 17628 | 22063         |
|                    | 2   P absorbée     | (W)    |     |      |      | 3762  | 4301  | 4834  | 5376  | 5945  | 6555          |
|                    | 3   I absorbée     | (A)    |     |      |      | 6.00  | 6.73  | 7.48  | 8.26  | 9.08  | 9.92          |
| <b>60</b>          | 1   P frigorifique | (Watt) |     |      |      |       | 6032  | 8110  | 10621 | 13677 | 17414         |
|                    | 2   P absorbée     | (W)    |     |      |      |       | 4336  | 4971  | 5597  | 6229  | 6883          |
|                    | 3   I absorbée     | (A)    |     |      |      |       | 6.81  | 7.65  | 8.53  | 9.44  | 10.4          |

| <b>60 Hz R452A</b> |                    |        |     |      |      |       |       |       |       |       |               |
|--------------------|--------------------|--------|-----|------|------|-------|-------|-------|-------|-------|---------------|
|                    |                    |        |     |      |      |       |       |       |       |       | <b>N°3584</b> |
| 4   T condensation | 5   T évaporation  | (°C)   | -25 | -20  | -15  | -10   | -5    | 0     | 5     | 10    | 15            |
| <b>30</b>          | 1   P frigorifique | (Watt) |     | 7297 | 9830 | 12848 | 16341 | 20297 | 24701 | 29534 | 34775         |
|                    | 2   P absorbée     | (W)    |     | 3503 | 4036 | 4578  | 5143  | 5747  | 6403  | 7126  | 7929          |
|                    | 3   I absorbée     | (A)    |     | 5.46 | 6.23 | 7.03  | 7.88  | 8.77  | 9.70  | 10.7  | 11.7          |
| <b>40</b>          | 1   P frigorifique | (Watt) |     |      | 7712 | 10333 | 13418 | 16961 | 20951 | 25380 | 30234         |
|                    | 2   P absorbée     | (W)    |     |      | 4099 | 4716  | 5334  | 5966  | 6627  | 7330  | 8091          |
|                    | 3   I absorbée     | (A)    |     |      | 6.26 | 7.13  | 8.05  | 9.00  | 10.00 | 11.0  | 12.1          |
| <b>50</b>          | 1   P frigorifique | (Watt) |     |      |      | 7904  | 10570 | 13689 | 17259 | 21278 | 25748         |
|                    | 2   P absorbée     | (W)    |     |      |      | 4749  | 5466  | 6175  | 6890  | 7624  | 8392          |
|                    | 3   I absorbée     | (A)    |     |      |      | 7.13  | 8.11  | 9.13  | 10.2  | 11.3  | 12.5          |
| <b>60</b>          | 1   P frigorifique | (Watt) |     |      |      |       | 7627  | 10326 | 13488 | 17125 | 21256         |
|                    | 2   P absorbée     | (W)    |     |      |      |       | 5436  | 6269  | 7085  | 7897  | 8720          |
|                    | 3   I absorbée     | (A)    |     |      |      |       | 8.07  | 9.16  | 10.3  | 11.5  | 12.7          |

1 = cooling capacity 2 = power input 3 = current 4 = condensing temperature 5 = evaporating temperature

**Nota : Tecumseh se réserve le droit de modifier les informations contenues dans ce document sans préavis.**

**Note : Tecumseh reserves the right to change information contained in this document without notification.**

© 2023 Tecumseh Products Company  
All rights reserved



**Tecumseh**

|                   |  |
|-------------------|--|
| <b>AG4561P-TZ</b> | <b>Tension TZ : 400V 3~ 50Hz / 440V 3~ 60 Hz</b> |
|-------------------|--|

|  |                        |        |
|--|------------------------|--------|
| Les performances sont données dans les <b>conditions Standard TE</b> : | Surchauffe :           | 11.0 K |
| Condition Mid  | Sous refroidissement : | 8.3 K  |
| The performance data are in <b>Standard TE conditions</b> :            | Superheat :            | 11.0 K |
| Mid Condition  | Subcooling :           | 8.3 K  |

| <b>50 Hz R404A</b> |                    |        |            |            |            |            |           |          |          |           |               |
|--------------------|--------------------|--------|------------|------------|------------|------------|-----------|----------|----------|-----------|---------------|
|                    |                    |        |            |            |            |            |           |          |          |           | <b>N°3578</b> |
| 4   T condensation | 5   T évaporation  | (°C)   | <b>-25</b> | <b>-20</b> | <b>-15</b> | <b>-10</b> | <b>-5</b> | <b>0</b> | <b>5</b> | <b>10</b> | <b>15</b>     |
| <b>30</b>          | 1   P frigorifique | (Watt) | 4258       | 5863       | 7834       | 10241      | 13158     | 16667    | 20853    | 25808     | 31631         |
|                    | 2   P absorbée     | (W)    | 2409       | 2799       | 3174       | 3546       | 3933      | 4349     | 4809     | 5328      | 5923          |
|                    | 3   I absorbée     | (A)    | 4.44       | 4.89       | 5.35       | 5.85       | 6.36      | 6.90     | 7.46     | 8.04      | 8.64          |
| <b>40</b>          | 1   P frigorifique | (Watt) |            | 4466       | 6179       | 8233       | 10700     | 13662    | 17205    | 21428     | 26439         |
|                    | 2   P absorbée     | (W)    |            | 2830       | 3294       | 3737       | 4173      | 4619     | 5089     | 5598      | 6162          |
|                    | 3   I absorbée     | (A)    |            | 4.89       | 5.45       | 6.03       | 6.64      | 7.27     | 7.92     | 8.59      | 9.28          |
| <b>50</b>          | 1   P frigorifique | (Watt) |            |            | 4531       | 6269       | 8326      | 10780    | 13722    | 17254     | 21495         |
|                    | 2   P absorbée     | (W)    |            |            | 3286       | 3835       | 4357      | 4869     | 5384     | 5919      | 6489          |
|                    | 3   I absorbée     | (A)    |            |            | 5.47       | 6.15       | 6.84      | 7.56     | 8.30     | 9.06      | 9.85          |
| <b>60</b>          | 1   P frigorifique | (Watt) |            |            |            | 4331       | 6022      | 8019     | 10413    | 13313     | 16857         |
|                    | 2   P absorbée     | (W)    |            |            |            | 3782       | 4426      | 5040     | 5637     | 6234      | 6846          |
|                    | 3   I absorbée     | (A)    |            |            |            | 6.19       | 6.97      | 7.78     | 8.61     | 9.47      | 10.3          |

| <b>60 Hz R404A</b> |                    |        |            |            |            |            |           |          |          |           |               |
|--------------------|--------------------|--------|------------|------------|------------|------------|-----------|----------|----------|-----------|---------------|
|                    |                    |        |            |            |            |            |           |          |          |           | <b>N°3578</b> |
| 4   T condensation | 5   T évaporation  | (°C)   | <b>-25</b> | <b>-20</b> | <b>-15</b> | <b>-10</b> | <b>-5</b> | <b>0</b> | <b>5</b> | <b>10</b> | <b>15</b>     |
| <b>30</b>          | 1   P frigorifique | (Watt) | 5413       | 7419       | 9903       | 12858      | 16271     | 20131    | 24422    | 29129     | 34233         |
|                    | 2   P absorbée     | (W)    | 3018       | 3550       | 4076       | 4609       | 5161      | 5747     | 6379     | 7071      | 7836          |
|                    | 3   I absorbée     | (A)    | 4.85       | 5.57       | 6.32       | 7.10       | 7.93      | 8.78     | 9.68     | 10.6      | 11.6          |
| <b>40</b>          | 1   P frigorifique | (Watt) |            | 5682       | 7790       | 10351      | 13358     | 16803    | 20676    | 24968     | 29672         |
|                    | 2   P absorbée     | (W)    |            | 3545       | 4167       | 4772       | 5373      | 5984     | 6618     | 7288      | 8007          |
|                    | 3   I absorbée     | (A)    |            | 5.58       | 6.39       | 7.24       | 8.13      | 9.05     | 10.0     | 11.0      | 12.0          |
| <b>50</b>          | 1   P frigorifique | (Watt) |            |            | 5803       | 7955       | 10541     | 13557    | 17001    | 20874     | 25179         |
|                    | 2   P absorbée     | (W)    |            |            | 4115       | 4841       | 5539      | 6224     | 6908     | 7604      | 8327          |
|                    | 3   I absorbée     | (A)    |            |            | 6.38       | 7.29       | 8.24      | 9.23     | 10.3     | 11.3      | 12.4          |
| <b>60</b>          | 1   P frigorifique | (Watt) |            |            |            | 5468       | 7620      | 10201    | 13220    | 16688     | 20631         |
|                    | 2   P absorbée     | (W)    |            |            |            | 4709       | 5553      | 6360     | 7142     | 7914      | 8688          |
|                    | 3   I absorbée     | (A)    |            |            |            | 7.25       | 8.27      | 9.32     | 10.4     | 11.5      | 12.7          |

1 = cooling capacity 2 = power input 3 = current 4 = condensing temperature 5 = evaporating temperature

**Nota : Tecumseh se réserve le droit de modifier les informations contenues dans ce document sans préavis.**

**Note : Tecumseh reserves the right to change information contained in this document without notification.**

© 2023 Tecumseh Products Company  
All rights reserved



**Tecumseh**

|                   |  |
|-------------------|--|
| <b>AG4561P-TZ</b> | <b>Tension TZ : 400V 3~ 50Hz / 440V 3~ 60 Hz</b> |
|-------------------|--|

|  |                        |        |
|--|------------------------|--------|
| Les performances sont données dans les <b>conditions Standard TE</b> : | Surchauffe :           | 11.0 K |
| Condition Mid  | Sous refroidissement : | 8.3 K  |
| The performance data are in <b>Standard TE conditions</b> :            | Superheat :            | 11.0 K |
| Mid Condition  | Subcooling :           | 8.3 K  |

| <b>50 Hz R448A (*)</b> |                    |        |      |      |      |       |       |       |       |       |               |
|------------------------|--------------------|--------|------|------|------|-------|-------|-------|-------|-------|---------------|
|                        |                    |        |      |      |      |       |       |       |       |       | <b>N°3596</b> |
| 4   T condensation     | 5   T évaporation  | (°C)   | -25  | -20  | -15  | -10   | -5    | 0     | 5     | 10    | 15            |
| <b>30</b>              | 1   P frigorifique | (Watt) | 3964 | 5588 | 7583 | 10023 | 12987 | 16557 | 20817 | 25856 | 31762         |
|                        | 2   P absorbée     | (W)    | 2275 | 2641 | 3002 | 3370  | 3758  | 4178  | 4644  | 5167  | 5761          |
|                        | 3   I absorbée     | (A)    | 4.07 | 4.51 | 4.98 | 5.48  | 6.01  | 6.57  | 7.14  | 7.74  | 8.35          |
| <b>40</b>              | 1   P frigorifique | (Watt) |      | 4273 | 6011 | 8107  | 10640 | 13691 | 17349 | 21704 | 26855         |
|                        | 2   P absorbée     | (W)    |      | 2673 | 3117 | 3550  | 3985  | 4433  | 4908  | 5423  | 5989          |
|                        | 3   I absorbée     | (A)    |      | 4.53 | 5.09 | 5.67  | 6.29  | 6.93  | 7.59  | 8.27  | 8.97          |
| <b>50</b>              | 1   P frigorifique | (Watt) |      |      | 4469 | 6269  | 8418  | 11000 | 14104 | 17826 | 22272         |
|                        | 2   P absorbée     | (W)    |      |      | 3105 | 3647  | 4172  | 4692  | 5221  | 5770  | 6353          |
|                        | 3   I absorbée     | (A)    |      |      | 5.11 | 5.79  | 6.51  | 7.25  | 8.01  | 8.80  | 9.60          |
| <b>60</b>              | 1   P frigorifique | (Watt) |      |      |      | 4491  | 6307  | 8472  | 11075 | 14220 | 18019         |
|                        | 2   P absorbée     | (W)    |      |      |      | 3578  | 4236  | 4872  | 5497  | 6124  | 6767          |
|                        | 3   I absorbée     | (A)    |      |      |      | 5.80  | 6.63  | 7.49  | 8.37  | 9.27  | 10.2          |

| <b>60 Hz R448A (*)</b> |                    |        |      |      |      |       |       |       |       |       |               |
|------------------------|--------------------|--------|------|------|------|-------|-------|-------|-------|-------|---------------|
|                        |                    |        |      |      |      |       |       |       |       |       | <b>N°3596</b> |
| 4   T condensation     | 5   T évaporation  | (°C)   | -25  | -20  | -15  | -10   | -5    | 0     | 5     | 10    | 15            |
| <b>30</b>              | 1   P frigorifique | (Watt) | 5021 | 7044 | 9546 | 12517 | 15944 | 19813 | 24110 | 28817 | 33912         |
|                        | 2   P absorbée     | (W)    | 2854 | 3353 | 3857 | 4376  | 4921  | 5503  | 6131  | 6815  | 7567          |
|                        | 3   I absorbée     | (A)    | 4.53 | 5.21 | 5.94 | 6.72  | 7.53  | 8.39  | 9.28  | 10.2  | 11.2          |
| <b>40</b>              | 1   P frigorifique | (Watt) |      | 5427 | 7581 | 10197 | 13267 | 16781 | 20729 | 25097 | 29874         |
|                        | 2   P absorbée     | (W)    |      | 3354 | 3949 | 4537  | 5129  | 5736  | 6367  | 7034  | 7745          |
|                        | 3   I absorbée     | (A)    |      | 5.23 | 6.01 | 6.85  | 7.73  | 8.65  | 9.60  | 10.6  | 11.6          |
| <b>50</b>              | 1   P frigorifique | (Watt) |      |      | 5696 | 7959  | 10673 | 13833 | 17435 | 21472 | 25941         |
|                        | 2   P absorbée     | (W)    |      |      | 3891 | 4606  | 5304  | 5994  | 6688  | 7395  | 8125          |
|                        | 3   I absorbée     | (A)    |      |      | 5.98 | 6.90  | 7.86  | 8.86  | 9.89  | 11.0  | 12.1          |
| <b>60</b>              | 1   P frigorifique | (Watt) |      |      |      | 5631  | 7988  | 10798 | 14060 | 17779 | 21963         |
|                        | 2   P absorbée     | (W)    |      |      |      | 4451  | 5311  | 6142  | 6955  | 7760  | 8567          |
|                        | 3   I absorbée     | (A)    |      |      |      | 6.81  | 7.86  | 8.96  | 10.1  | 11.3  | 12.5          |

**1 = cooling capacity 2 = power input 3 = current 4 = condensing temperature 5 = evaporating temperature**

(\*) Veuillez vous référer strictement aux Recommandations d'Utilisation et Bulletins Marketing Tecumseh du fait de la température de reflux élevée pour les applications LBP.  
 (\*) Due to very high discharge temperature especially on LBP conditions, please strictly refer to Tecumseh Guidelines & Marketing Bulletin when using this refrigerant.

**Nota : Tecumseh se réserve le droit de modifier les informations contenues dans ce document sans préavis.**  
**Note : Tecumseh reserves the right to change information contained in this document without notification.**

© 2023 Tecumseh Products Company  
All rights reserved



**Tecumseh**

|                   |  |
|-------------------|--|
| <b>AG4561P-TZ</b> | <b>Tension TZ : 400V 3~ 50Hz / 440V 3~ 60 Hz</b> |
|-------------------|--|

|  |                        |        |
|--|------------------------|--------|
| Les performances sont données dans les <b>conditions Standard TE</b> : | Surchauffe :           | 11.0 K |
| Condition Mid  | Sous refroidissement : | 8.3 K  |
| The performance data are in <b>Standard TE conditions</b> :            | Superheat :            | 11.0 K |
| Mid Condition  | Subcooling :           | 8.3 K  |

| <b>50 Hz R449A (*)</b> |                    |        |      |      |      |       |       |       |       |       |               |
|------------------------|--------------------|--------|------|------|------|-------|-------|-------|-------|-------|---------------|
|                        |                    |        |      |      |      |       |       |       |       |       | <b>N°3590</b> |
| 4   T condensation     | 5   T évaporation  | (°C)   | -25  | -20  | -15  | -10   | -5    | 0     | 5     | 10    | 15            |
| <b>30</b>              | 1   P frigorifique | (Watt) | 3949 | 5572 | 7566 | 10006 | 12972 | 16546 | 20813 | 25862 | 31782         |
|                        | 2   P absorbée     | (W)    | 2272 | 2638 | 2999 | 3367  | 3755  | 4175  | 4640  | 5163  | 5757          |
|                        | 3   I absorbée     | (A)    | 4.07 | 4.51 | 4.98 | 5.48  | 6.01  | 6.56  | 7.14  | 7.73  | 8.34          |
| <b>40</b>              | 1   P frigorifique | (Watt) |      | 4257 | 5993 | 8090  | 10624 | 13678 | 17342 | 21707 | 26871         |
|                        | 2   P absorbée     | (W)    |      | 2669 | 3114 | 3547  | 3982  | 4430  | 4905  | 5420  | 5986          |
|                        | 3   I absorbée     | (A)    |      | 4.53 | 5.08 | 5.67  | 6.28  | 6.92  | 7.59  | 8.27  | 8.97          |
| <b>50</b>              | 1   P frigorifique | (Watt) |      |      | 4451 | 6249  | 8399  | 10984 | 14092 | 17822 | 22279         |
|                        | 2   P absorbée     | (W)    |      |      | 3100 | 3643  | 4168  | 4689  | 5218  | 5767  | 6350          |
|                        | 3   I absorbée     | (A)    |      |      | 5.10 | 5.79  | 6.50  | 7.24  | 8.01  | 8.80  | 9.60          |
| <b>60</b>              | 1   P frigorifique | (Watt) |      |      |      | 4468  | 6284  | 8450  | 11057 | 14206 | 18014         |
|                        | 2   P absorbée     | (W)    |      |      |      | 3573  | 4232  | 4868  | 5494  | 6122  | 6765          |
|                        | 3   I absorbée     | (A)    |      |      |      | 5.80  | 6.63  | 7.48  | 8.36  | 9.27  | 10.2          |

| <b>60 Hz R449A (*)</b> |                    |        |      |      |      |       |       |       |       |       |               |
|------------------------|--------------------|--------|------|------|------|-------|-------|-------|-------|-------|---------------|
|                        |                    |        |      |      |      |       |       |       |       |       | <b>N°3590</b> |
| 4   T condensation     | 5   T évaporation  | (°C)   | -25  | -20  | -15  | -10   | -5    | 0     | 5     | 10    | 15            |
| <b>30</b>              | 1   P frigorifique | (Watt) | 5003 | 7023 | 9525 | 12497 | 15927 | 19803 | 24110 | 28830 | 33941         |
|                        | 2   P absorbée     | (W)    | 2851 | 3349 | 3853 | 4372  | 4917  | 5498  | 6126  | 6811  | 7563          |
|                        | 3   I absorbée     | (A)    | 4.53 | 5.21 | 5.94 | 6.71  | 7.53  | 8.38  | 9.28  | 10.2  | 11.2          |
| <b>40</b>              | 1   P frigorifique | (Watt) |      | 5407 | 7559 | 10175 | 13248 | 16768 | 20725 | 25106 | 29899         |
|                        | 2   P absorbée     | (W)    |      | 3350 | 3944 | 4532  | 5125  | 5732  | 6363  | 7030  | 7741          |
|                        | 3   I absorbée     | (A)    |      | 5.22 | 6.01 | 6.84  | 7.72  | 8.64  | 9.59  | 10.6  | 11.6          |
| <b>50</b>              | 1   P frigorifique | (Watt) |      |      | 5673 | 7934  | 10649 | 13814 | 17424 | 21473 | 25957         |
|                        | 2   P absorbée     | (W)    |      |      | 3886 | 4601  | 5299  | 5990  | 6684  | 7391  | 8122          |
|                        | 3   I absorbée     | (A)    |      |      | 5.98 | 6.89  | 7.85  | 8.85  | 9.89  | 11.0  | 12.1          |
| <b>60</b>              | 1   P frigorifique | (Watt) |      |      |      | 5601  | 7958  | 10770 | 14038 | 17767 | 21963         |
|                        | 2   P absorbée     | (W)    |      |      |      | 4443  | 5305  | 6137  | 6951  | 7757  | 8565          |
|                        | 3   I absorbée     | (A)    |      |      |      | 6.80  | 7.86  | 8.96  | 10.1  | 11.3  | 12.5          |

1 = cooling capacity 2 = power input 3 = current 4 = condensing temperature 5 = evaporating temperature

(\*) Veuillez vous référer strictement aux Recommandations d'Utilisation et Bulletins Marketing Tecumseh du fait de la température de reflux élevée pour les applications LBP.  
 (\*) Due to very high discharge temperature especially on LBP conditions, please strictly refer to Tecumseh Guidelines & Marketing Bulletin when using this refrigerant.

**Nota : Tecumseh se réserve le droit de modifier les informations contenues dans ce document sans préavis.**

**Note : Tecumseh reserves the right to change information contained in this document without notification.**

© 2023 Tecumseh Products Company  
All rights reserved



**Tecumseh**

|                   |  |
|-------------------|--|
| <b>AG4561P-TZ</b> | <b>Tension TZ : 400V 3~ 50Hz / 440V 3~ 60 Hz</b> |
|-------------------|--|

|  |                        |        |
|--|------------------------|--------|
| Les performances sont données dans les <b>conditions Standard TE</b> : | Surchauffe :           | 11.0 K |
| Condition Mid  | Sous refroidissement : | 8.3 K  |
| The performance data are in <b>Standard TE conditions</b> :            | Superheat :            | 11.0 K |
| Mid Condition  | Subcooling :           | 8.3 K  |

| <b>50 Hz R455A</b> |                    |        |     |      |      |       |       |       |       |       |               |
|--------------------|--------------------|--------|-----|------|------|-------|-------|-------|-------|-------|---------------|
|                    |                    |        |     |      |      |       |       |       |       |       | <b>N°3358</b> |
| 4   T condensation | 5   T évaporation  | (°C)   | -25 | -20  | -15  | -10   | -5    | 0     | 5     | 10    | 15            |
| <b>30</b>          | 1   P frigorifique | (Watt) |     | 6200 | 8308 | 10870 | 13959 | 17654 | 22035 | 27184 | 33241         |
|                    | 2   P absorbée     | (W)    |     | 2720 | 3070 | 3397  | 3689  | 3932  | 4115  | 4225  | 4252          |
|                    | 3   I absorbée     | (A)    |     | 5.26 | 5.70 | 6.14  | 6.58  | 7.03  | 7.47  | 7.92  | 8.37          |
| <b>40</b>          | 1   P frigorifique | (Watt) |     |      | 6563 | 8779  | 11461 | 14690 | 18549 | 23126 | 28527         |
|                    | 2   P absorbée     | (W)    |     |      | 3168 | 3594  | 3998  | 4370  | 4697  | 4967  | 5168          |
|                    | 3   I absorbée     | (A)    |     |      | 5.79 | 6.33  | 6.88  | 7.43  | 7.98  | 8.54  | 9.09          |
| <b>50</b>          | 1   P frigorifique | (Watt) |     |      |      | 6711  | 8980  | 11735 | 15062 | 19059 | 23827         |
|                    | 2   P absorbée     | (W)    |     |      |      | 3629  | 4133  | 4620  | 5076  | 5491  | 5851          |
|                    | 3   I absorbée     | (A)    |     |      |      | 6.42  | 7.07  | 7.73  | 8.38  | 9.04  | 9.70          |
| <b>60</b>          | 1   P frigorifique | (Watt) |     |      |      |       | 6608  | 8885  | 11679 | 15093 | 19243         |
|                    | 2   P absorbée     | (W)    |     |      |      |       | 4083  | 4670  | 5242  | 5787  | 6292          |
|                    | 3   I absorbée     | (A)    |     |      |      |       | 7.15  | 7.91  | 8.67  | 9.43  | 10.2          |

| <b>60 Hz R455A</b> |                    |        |     |      |      |       |       |       |       |       |               |
|--------------------|--------------------|--------|-----|------|------|-------|-------|-------|-------|-------|---------------|
|                    |                    |        |     |      |      |       |       |       |       |       | <b>N°3358</b> |
| 4   T condensation | 5   T évaporation  | (°C)   | -25 | -20  | -15  | -10   | -5    | 0     | 5     | 10    | 15            |
| <b>30</b>          | 1   P frigorifique | (Watt) |     | 7203 | 9499 | 12248 | 15526 | 19410 | 23980 | 29319 | 35572         |
|                    | 2   P absorbée     | (W)    |     | 3230 | 3665 | 4080  | 4465  | 4810  | 5107  | 5344  | 5514          |
|                    | 3   I absorbée     | (A)    |     | 4.96 | 5.51 | 6.12  | 6.78  | 7.50  | 8.28  | 9.12  | 10.0          |
| <b>40</b>          | 1   P frigorifique | (Watt) |     |      | 7776 | 10274 | 13260 | 16815 | 21025 | 25979 | 31786         |
|                    | 2   P absorbée     | (W)    |     |      | 3805 | 4341  | 4859  | 5348  | 5799  | 6203  | 6549          |
|                    | 3   I absorbée     | (A)    |     |      | 5.61 | 6.29  | 7.03  | 7.83  | 8.69  | 9.60  | 10.6          |
| <b>50</b>          | 1   P frigorifique | (Watt) |     |      |      | 8119  | 10762 | 13936 | 17732 | 22250 | 27595         |
|                    | 2   P absorbée     | (W)    |     |      |      | 4416  | 5065  | 5696  | 6299  | 6866  | 7387          |
|                    | 3   I absorbée     | (A)    |     |      |      | 6.35  | 7.17  | 8.04  | 8.97  | 9.95  | 11.0          |
| <b>60</b>          | 1   P frigorifique | (Watt) |     |      |      |       | 8183  | 10930 | 14269 | 18307 | 23171         |
|                    | 2   P absorbée     | (W)    |     |      |      |       | 5049  | 5819  | 6572  | 7300  | 7992          |
|                    | 3   I absorbée     | (A)    |     |      |      |       | 7.18  | 8.12  | 9.12  | 10.2  | 11.3          |

1 = cooling capacity 2 = power input 3 = current 4 = condensing temperature 5 = evaporating temperature

**Nota : Tecumseh se réserve le droit de modifier les informations contenues dans ce document sans préavis.**

**Note : Tecumseh reserves the right to change information contained in this document without notification.**

© 2023 Tecumseh Products Company  
All rights reserved



**Tecumseh**

|                   |  |
|-------------------|--|
| <b>AG4561P-TZ</b> | <b>Tension TZ : 400V 3~ 50Hz / 440V 3~ 60 Hz</b> |
|-------------------|--|

|  |                        |        |
|--|------------------------|--------|
| Les performances sont données dans les <b>conditions Standard TE</b> : | Surchauffe :           | 11.0 K |
| Condition Mid  | Sous refroidissement : | 8.3 K  |
| The performance data are in <b>Standard TE conditions</b> :            | Superheat :            | 11.0 K |
| Mid Condition  | Subcooling :           | 8.3 K  |

| <b>50 Hz R454C</b> |                    |        |     |      |      |      |       |       |       |       |               |
|--------------------|--------------------|--------|-----|------|------|------|-------|-------|-------|-------|---------------|
|                    |                    |        |     |      |      |      |       |       |       |       | <b>N°3364</b> |
| 4   T condensation | 5   T évaporation  | (°C)   | -25 | -20  | -15  | -10  | -5    | 0     | 5     | 10    | 15            |
| <b>30</b>          | 1   P frigorifique | (Watt) |     | 5402 | 7271 | 9547 | 12300 | 15599 | 19521 | 24141 | 29536         |
|                    | 2   P absorbée     | (W)    |     | 2430 | 2756 | 3062 | 3336  | 3569  | 3748  | 3863  | 3903          |
|                    | 3   I absorbée     | (A)    |     | 4.90 | 5.26 | 5.65 | 6.06  | 6.50  | 6.95  | 7.43  | 7.93          |
| <b>40</b>          | 1   P frigorifique | (Watt) |     |      | 5711 | 7668 | 10041 | 12902 | 16328 | 20401 | 25209         |
|                    | 2   P absorbée     | (W)    |     |      | 2826 | 3217 | 3591  | 3937  | 4243  | 4499  | 4693          |
|                    | 3   I absorbée     | (A)    |     |      | 5.36 | 5.82 | 6.30  | 6.81  | 7.34  | 7.89  | 8.46          |
| <b>50</b>          | 1   P frigorifique | (Watt) |     |      |      | 5898 | 7905  | 10341 | 13286 | 16827 | 21061         |
|                    | 2   P absorbée     | (W)    |     |      |      | 3252 | 3712  | 4158  | 4577  | 4960  | 5294          |
|                    | 3   I absorbée     | (A)    |     |      |      | 5.91 | 6.46  | 7.04  | 7.64  | 8.26  | 8.90          |
| <b>60</b>          | 1   P frigorifique | (Watt) |     |      |      |      | 5937  | 7966  | 10449 | 13481 | 17167         |
|                    | 2   P absorbée     | (W)    |     |      |      |      | 3704  | 4236  | 4756  | 5252  | 5713          |
|                    | 3   I absorbée     | (A)    |     |      |      |      | 6.55  | 7.19  | 7.86  | 8.56  | 9.27          |

| <b>60 Hz R454C</b> |                    |        |     |      |      |       |       |       |       |       |               |
|--------------------|--------------------|--------|-----|------|------|-------|-------|-------|-------|-------|---------------|
|                    |                    |        |     |      |      |       |       |       |       |       | <b>N°3364</b> |
| 4   T condensation | 5   T évaporation  | (°C)   | -25 | -20  | -15  | -10   | -5    | 0     | 5     | 10    | 15            |
| <b>30</b>          | 1   P frigorifique | (Watt) |     | 6260 | 8264 | 10679 | 13574 | 17022 | 21098 | 25879 | 31443         |
|                    | 2   P absorbée     | (W)    |     | 2914 | 3306 | 3683  | 4036  | 4354  | 4629  | 4851  | 5010          |
|                    | 3   I absorbée     | (A)    |     | 4.66 | 5.12 | 5.59  | 6.07  | 6.58  | 7.10  | 7.64  | 8.19          |
| <b>40</b>          | 1   P frigorifique | (Watt) |     |      | 6828 | 9005  | 11616 | 14735 | 18441 | 22818 | 27955         |
|                    | 2   P absorbée     | (W)    |     |      | 3445 | 3916  | 4372  | 4803  | 5201  | 5554  | 5855          |
|                    | 3   I absorbée     | (A)    |     |      | 5.24 | 5.80  | 6.38  | 6.98  | 7.59  | 8.22  | 8.87          |
| <b>50</b>          | 1   P frigorifique | (Watt) |     |      |      | 7212  | 9511  | 12273 | 15583 | 19530 | 24215         |
|                    | 2   P absorbée     | (W)    |     |      |      | 4006  | 4561  | 5102  | 5618  | 6099  | 6537          |
|                    | 3   I absorbée     | (A)    |     |      |      | 5.91  | 6.58  | 7.27  | 7.97  | 8.69  | 9.43          |
| <b>60</b>          | 1   P frigorifique | (Watt) |     |      |      |       | 7357  | 9741  | 12634 | 16134 | 20356         |
|                    | 2   P absorbée     | (W)    |     |      |      |       | 4581  | 5227  | 5857  | 6463  | 7034          |
|                    | 3   I absorbée     | (A)    |     |      |      |       | 6.67  | 7.45  | 8.24  | 9.05  | 9.88          |

1 = cooling capacity 2 = power input 3 = current 4 = condensing temperature 5 = evaporating temperature

**Nota : Tecumseh se réserve le droit de modifier les informations contenues dans ce document sans préavis.**

**Note : Tecumseh reserves the right to change information contained in this document without notification.**

© 2023 Tecumseh Products Company  
All rights reserved