



Compressor
Voltage Code : TZ

AJ2446P-TZ

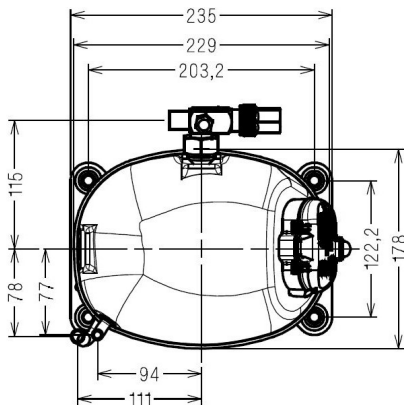
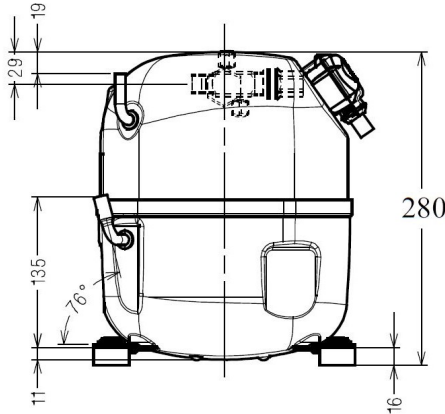
Low Temp. Commercial (BP)

400V 3~ 50Hz / 440V 3~ 60 Hz

R404A

AJ2446P-TZ1A

Operating conditions : Tropical... / 50 Hz / Dew		Sound Power ISO3745 / ISO 3743-1
Evaporating Temp. : -25.0 °C Superheat : 45.0 K Return gas temp. : 20.0 °C Condensing Temp. : 50.0 °C Subcooling : 0.00 K Liquid : 49.7 °C	Refrig. Capacity : 838 Watt Power Input : 825 Watt Amps : 1.52 A C.O.P : 1.02 Watt/W	57 dBA



Displacement (cc)	26,2
Net Weight (Kg)	21.3
Oil Quantity (cc)	475.0
Oil Type	Polyolester
Expansion Device	Capillary_Tube/Expansion_Valve
Cooling	Fan
Main Winding (Ohm)	15.5
Current	
RLA (A)	1,5 1,6
MCC (A)	2,7 2,9
LRA (A)	13.4 13.2
Electrical Equipment	TRI
Overload	Interne
Refrigerating connection for	
Suction Tube	12.7 (1/2")
Discharge Tube	7.9 (5/16")
Process Tube	6.35 (1/4")

Certificates :

Note : Tecumseh reserves the right to change information contained in this document without notification.

Selection program - V4.6_2024205 - 08/08/2024



Tecumseh

AJ2446P-TZ	Tension TZ : 400V 3~ 50Hz / 440V 3~ 60 Hz
-------------------	--

Les performances sont données dans les conditions EN12900 :	Gaz aspirés :	20.0 °C
Condition Dew	Sous refroidissement :	0.0 K
The performance data are in EN12900 conditions :	Return gas :	20.0 °C
Dew Condition	Subcooling :	0.0 K

© 2024 Tecumseh Products Company
All rights reserved

50 Hz R404A

N°3607

4 T condensation	5 T évaporation	(°C)	-40	-35	-30	-25	-20	-15	-10
30	1 P frigorifique	(Watt)	551	770	1033	1345	1712	2138	2626
	2 P absorbée	(W)	485	579	672	763	851	937	1018
	3 I absorbée	(A)	1.11	1.20	1.31	1.42	1.55	1.68	1.83
40	1 P frigorifique	(Watt)	410	597	821	1086	1397	1759	2176
	2 P absorbée	(W)	470	581	692	803	913	1021	1128
	3 I absorbée	(A)	1.09	1.21	1.34	1.48	1.63	1.79	1.96
50	1 P frigorifique	(Watt)		434	620	838	1094	1393	1740
	2 P absorbée	(W)		562	693	825	957	1090	1222
	3 I absorbée	(A)		1.20	1.36	1.52	1.70	1.88	2.08
60	1 P frigorifique	(Watt)			431	603	806	1042	1318
	2 P absorbée	(W)			670	824	981	1139	1298
	3 I absorbée	(A)			1.35	1.54	1.74	1.95	2.17

60 Hz R404A

N°3607

4 T condensation	5 T évaporation	(°C)	-40	-35	-30	-25	-20	-15	-10
30	1 P frigorifique	(Watt)	652	905	1211	1577	2007	2506	3080
	2 P absorbée	(W)	574	686	799	914	1031	1153	1278
	3 I absorbée	(A)	1.09	1.21	1.34	1.48	1.64	1.81	1.99
40	1 P frigorifique	(Watt)	498	716	978	1291	1659	2087	2582
	2 P absorbée	(W)	558	689	821	958	1098	1243	1393
	3 I absorbée	(A)	1.08	1.22	1.38	1.54	1.73	1.92	2.13
50	1 P frigorifique	(Watt)		532	748	1006	1310	1666	2078
	2 P absorbée	(W)		667	821	979	1142	1312	1489
	3 I absorbée	(A)		1.21	1.39	1.58	1.79	2.01	2.24
60	1 P frigorifique	(Watt)			526	727	966	1247	1576
	2 P absorbée	(W)			797	978	1165	1360	1563
	3 I absorbée	(A)			1.37	1.59	1.82	2.07	2.33

1 = cooling capacity 2 = power input 3 = current 4 = condensing temperature 5 = evaporating temperature

Nota : Tecumseh se réserve le droit de modifier les informations contenues dans ce document sans préavis.

Note : Tecumseh reserves the right to change information contained in this document without notification.