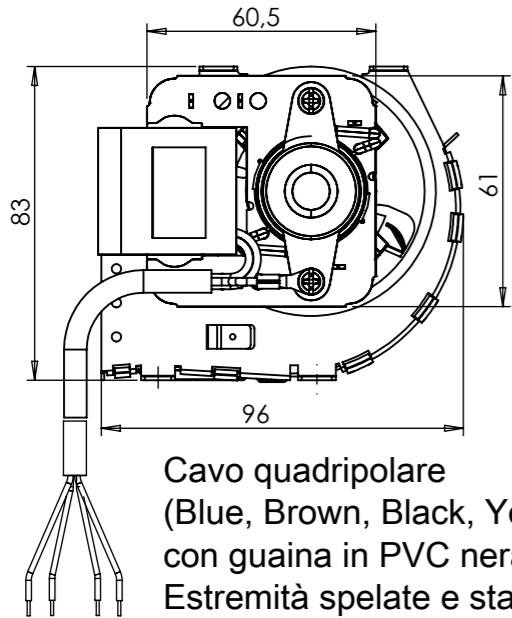
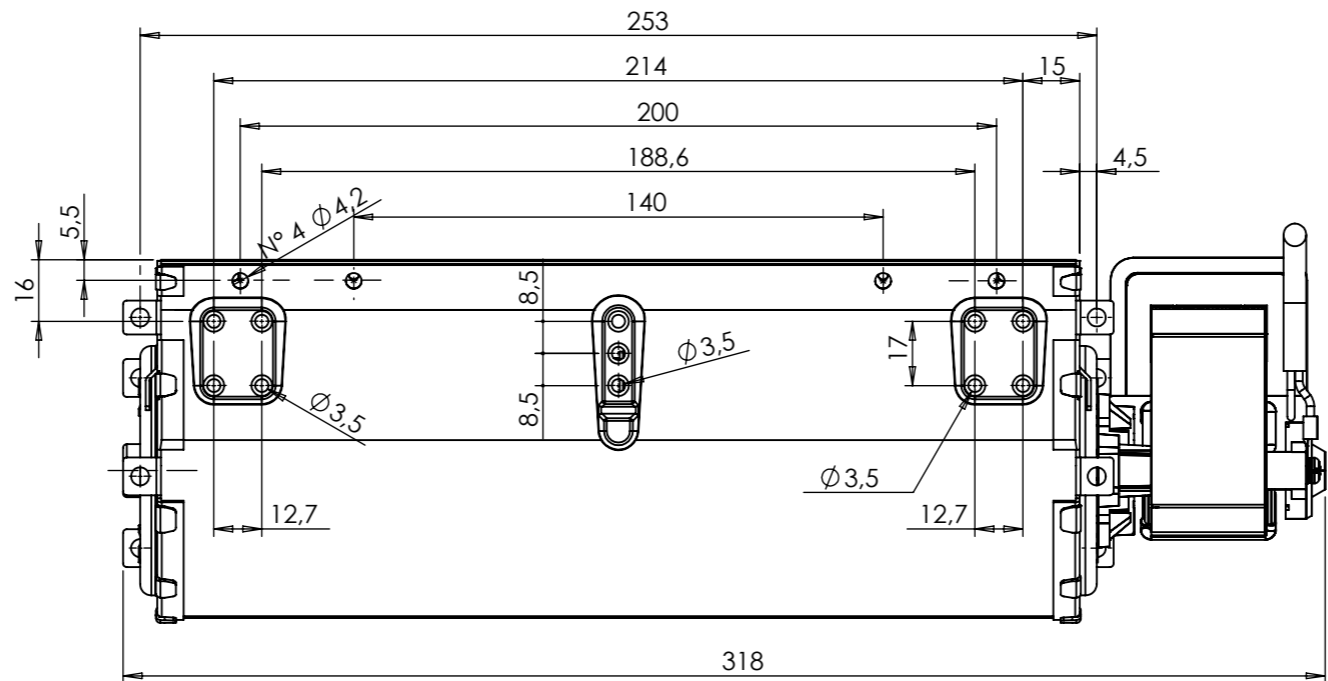
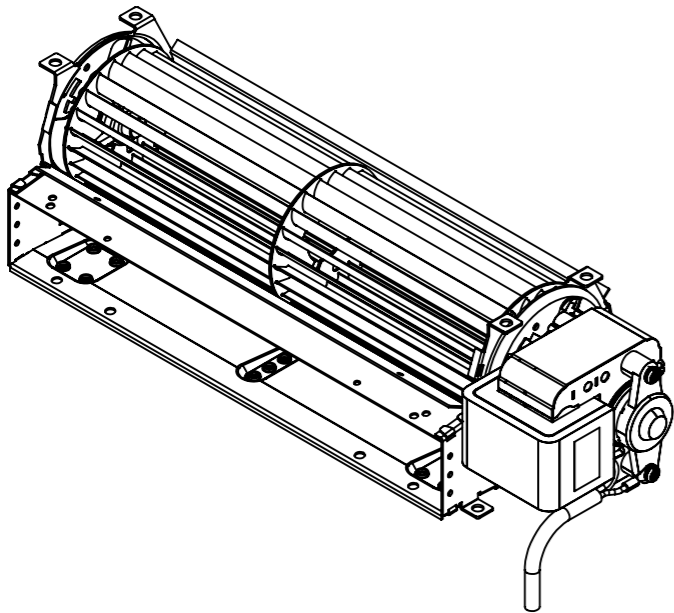
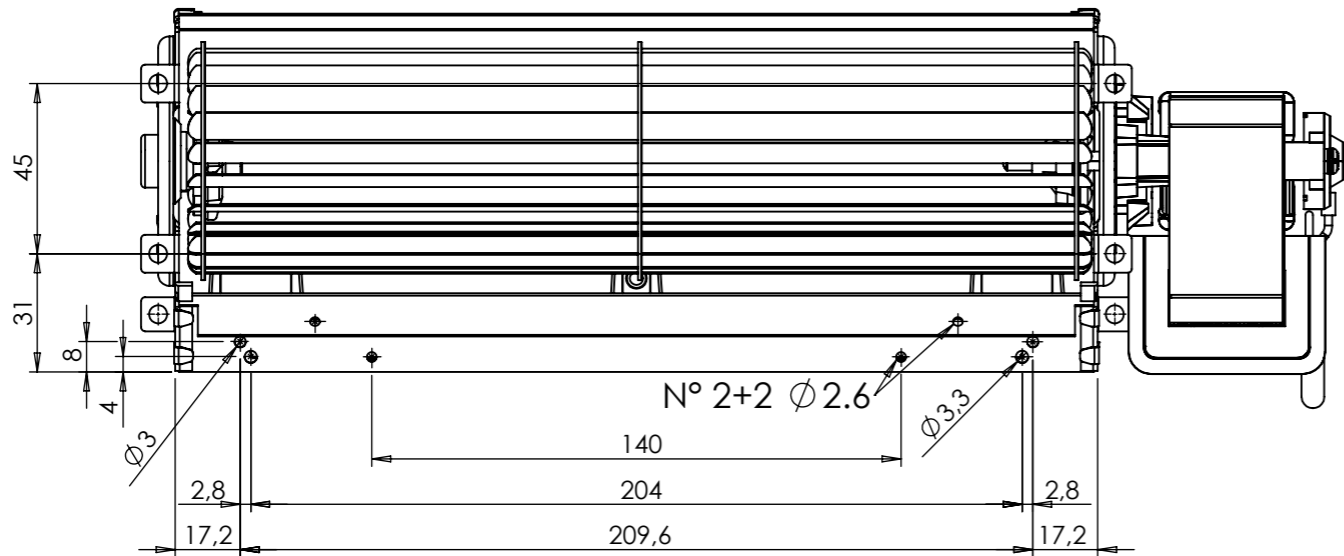
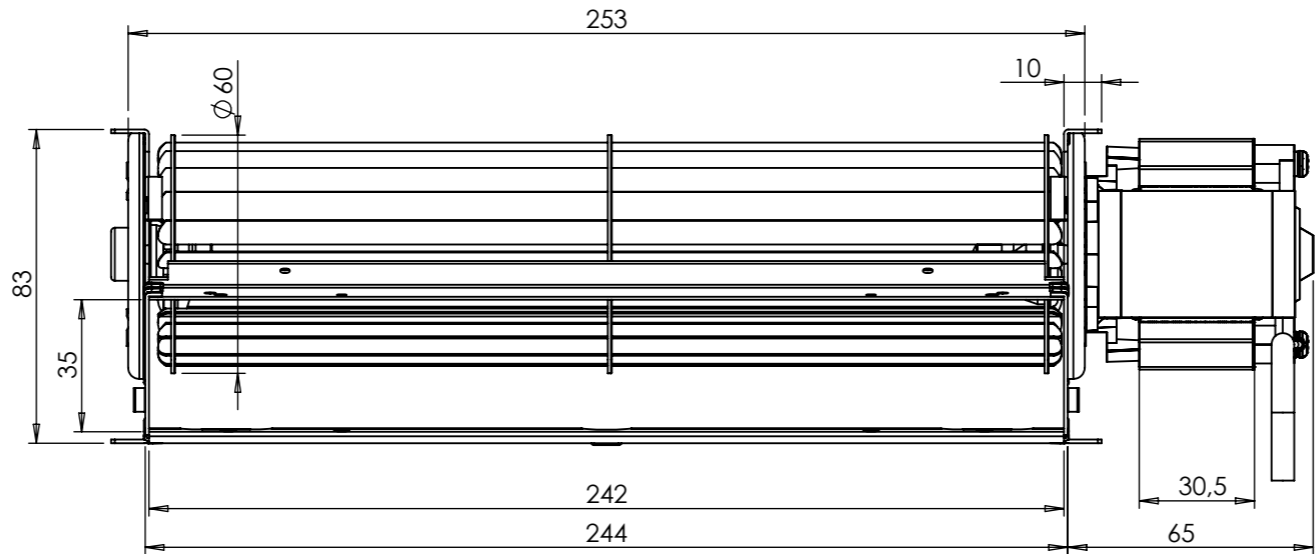


A termini di legge ci riserviamo la proprietà del presente disegno con il divieto di riprodurlo o di renderlo noto a terzi, senza nostra autorizzazione.

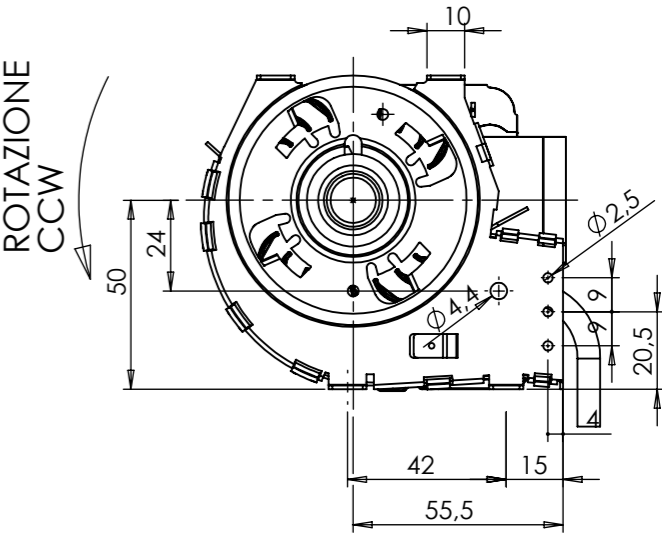


Cavo quadripolare
(Blue, Brown, Black, Yellow-green)
con guaina in PVC nera.
Estremità spelate e stagnate.
Lunghezza totale 1250 mm




DATI CARATTERISTICI/TECHNICAL DATA AT 50Hz "TAS24B-089K-00"			
		Vmax	Vmin
Tensione nominale/Rated Voltage	V	230	230
Frequenza/Rated Frequency	Hz	50 - 60	50 - 60
Potenza assorbita/Input Power (±10%)	W	30	25
Classe isolamento/Insulation class (IEC 60085)	H	H	H
min - Max ambient temperature	°C	-10 + 50	-10 + 50
N° di giri a vuoto/Rated speed no load (±10%)	Rpm	1580	1330
Portata a bocca libera/Rated airflow (±10%)	m³/h	215	180
Pressione statica/Static pressure (±10%)	Pa	68	60
Rotazione/Rotation (side View)		CCW	CCW
Funzionamento continuativo/Continuous duty			

Vista di "Riferimento"



Yellow-green	Ground
Blue	0 - Common
Black	1 - Max Speed
Brown	2 - Min Speed

Materiale:		Peso netto [g]:	Trattamento:
		Per le quote lineari ed angolari prive di tolleranza, riferirsi alla norma UNI ISO 2768 grado Medio.	
TRIAL S.r.l. S.Giuliano M.se Via dei Mille, 3		Dis. : Rizzi	
Descrizione: TRK021-D8-C48-UM-2V 230V 50/60HZ		Data : 22-12-25	
		Scala : 1:2	
		Visto : -	
		Foglio 1 / 1	
		Codice	
		TAS24B-089K	
		Mod.	
		00	
		Sostituisce il dis.	