



CHIUSURE SERIE 1800

FASTENERS SERIES 1800

CHIUSURE FASTENERS

VERSIONI DISPONIBILI AVAILABLE VERSIONS

- **MOD. 1825/VE**
Un punto di chiusura
One fastening point
- **MOD. 1850/VE**
Tre punti di chiusura
Three fastening points

Abbinabile a: *To be combined with:*

- **MOD. 2700**
Maniglia interna + riscontro
Inside handle + strike
- **MOD. 217 + 2132**
Maniglia interna + riscontro
Inside handle + strike
- **MOD. 217 + 0634**
Maniglia interna + riscontro
Inside handle + strike
- **MOD. 1875/VE**
Blocco supplementare +
aggancio
Additional block + strike

Mod. 1825/VE:
chiusura ad un punto senza
chiave, completa di aggancio

Mod. 1825/VE:
*one fastening point without key
with strike*



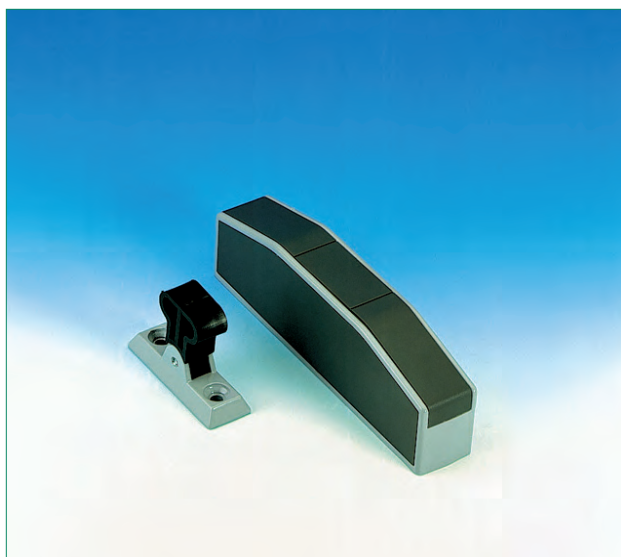
PER PORTE TAMPONE

Chiusure automatiche realizzate in alluminio verniciato con impugnatura in materiale composito

- Disponibili ad uno o tre punti di chiusura
- Reversibilità dx o sx

Opzioni:

- Blocco supplementare modello 1875/VE con aggancio
- Maniglia interna modello 2700 con riscontro
- Maniglia interna modello 217 con riscontro 2132 o riscontro 0634



Mod. 1875/VE:
blocco supplementare con aggancio

Mod. 1875/VE:
additional fastening block with strike

FOR OVERLAPPING DOORS

Die-cast aluminium fasteners with black nylon handle reinforced by fiberglass

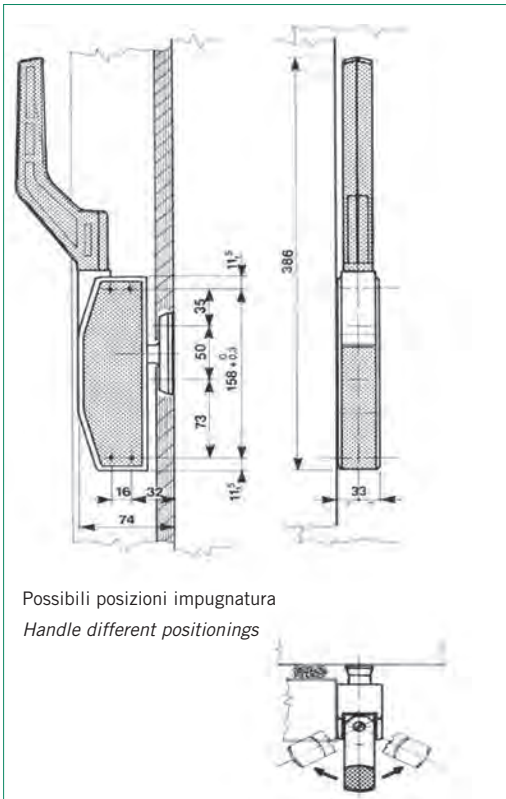
- Available with one or three fastening points
- Interchangeable right or left

Options:

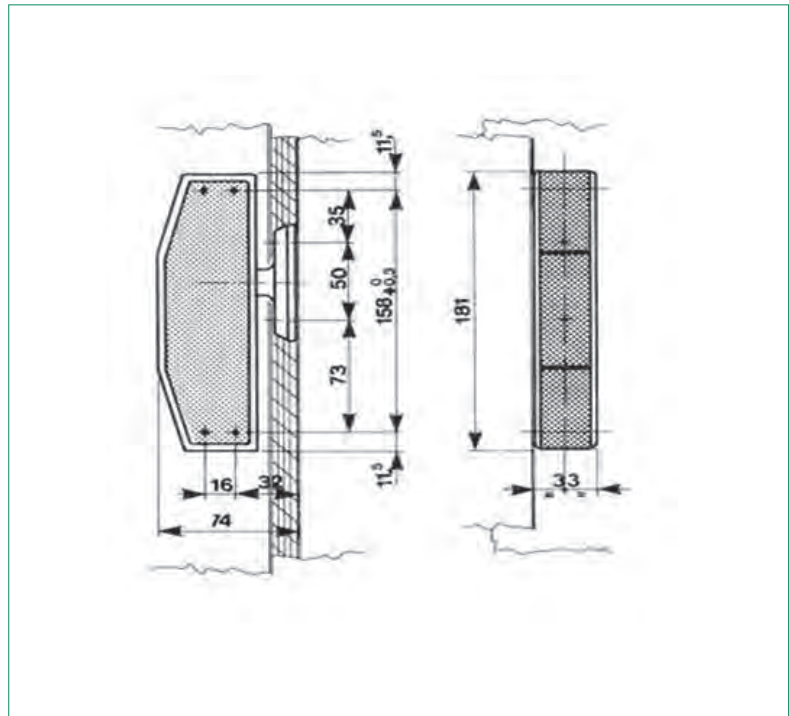
- Additional fastening block model 1875/VE with strike
- Inside handle model 2700 with strike
- Inside handle model 217 with strike 2132 or strike 0634

CHIUSURE SERIE 1800

FASTENERS SERIES 1800



Possibili posizioni impugnatura
Handle different positionings



Mod.1875/VE: blocco supplementare con aggancio
Mod.1875/VE: additional fastening block with strike

DATI TECNICI

Caratteristiche principali:

- Mod. 1825/VE: chiusura ad un punto con aggancio
- Corpo chiusura: verniciato grigio 445C
 - Coperture: grigie
 - Peso: 615 gr

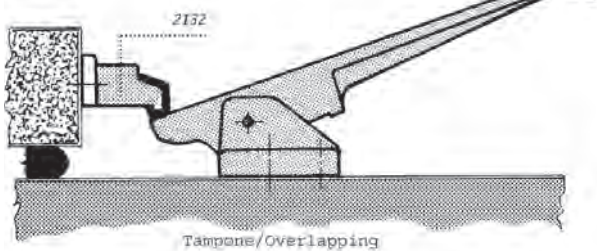
TECHNICAL DATA

Main features:

- Mod. 1825/VE: one fastening point with strike
- Fastener body: grey painted 445C
 - Covers: grey
 - Weight: gr 615

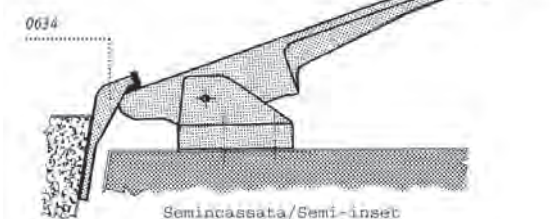
Maniglia interna 217 + riscontro 2132

Inside handle 217 + strike 2132



Maniglia interna 217 + riscontro 0634

Inside handle 217 + strike 0634



Maniglia interna mod. 2700 con riscontro
Inside handle mod. 2700 with strike