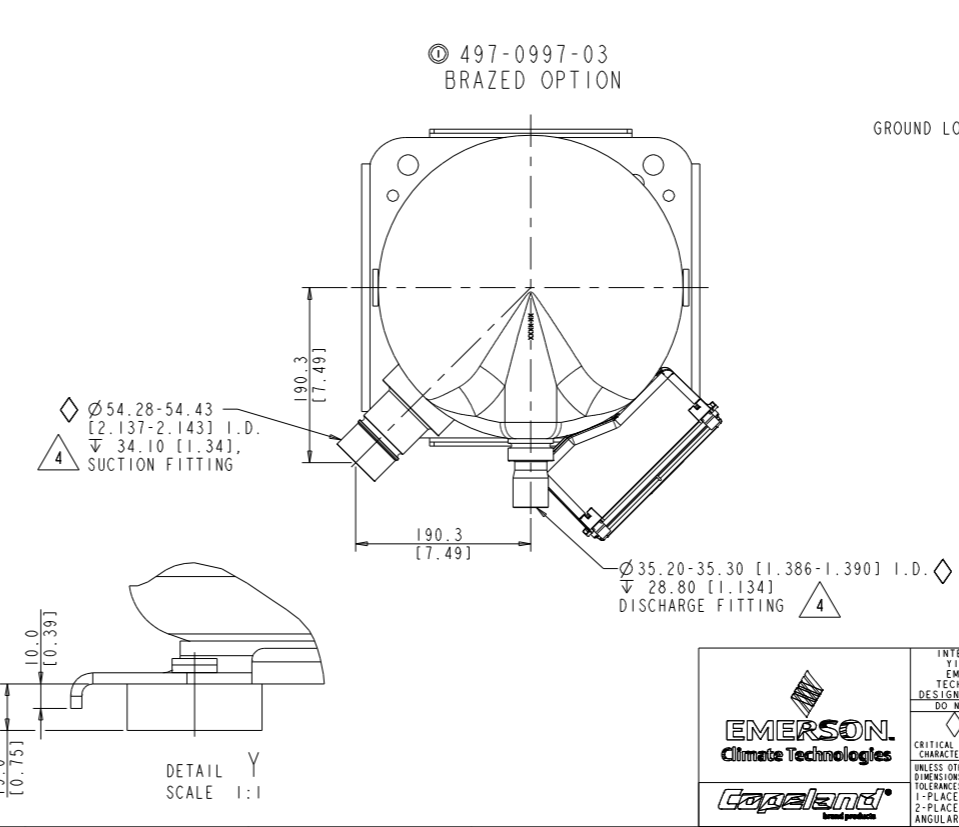
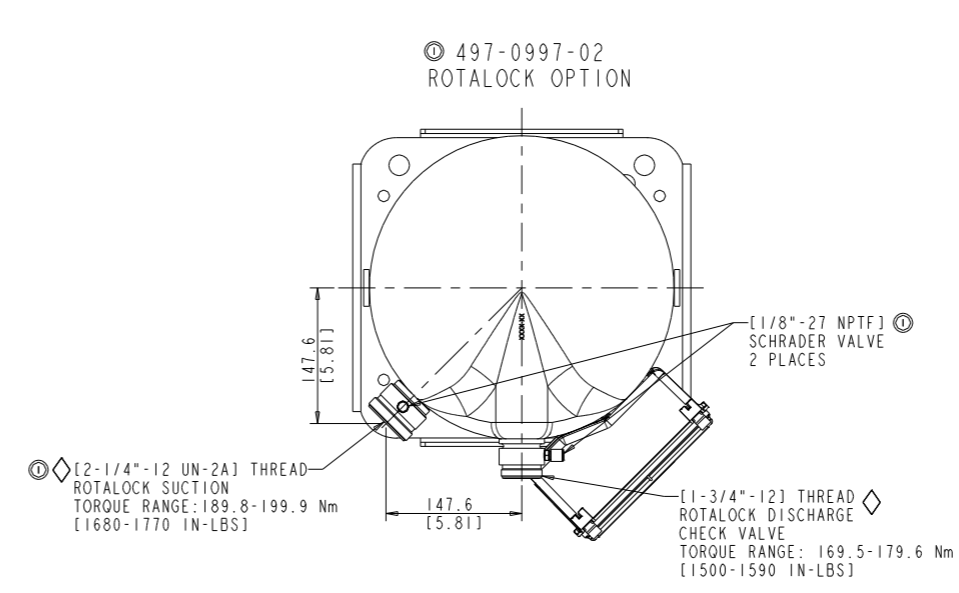
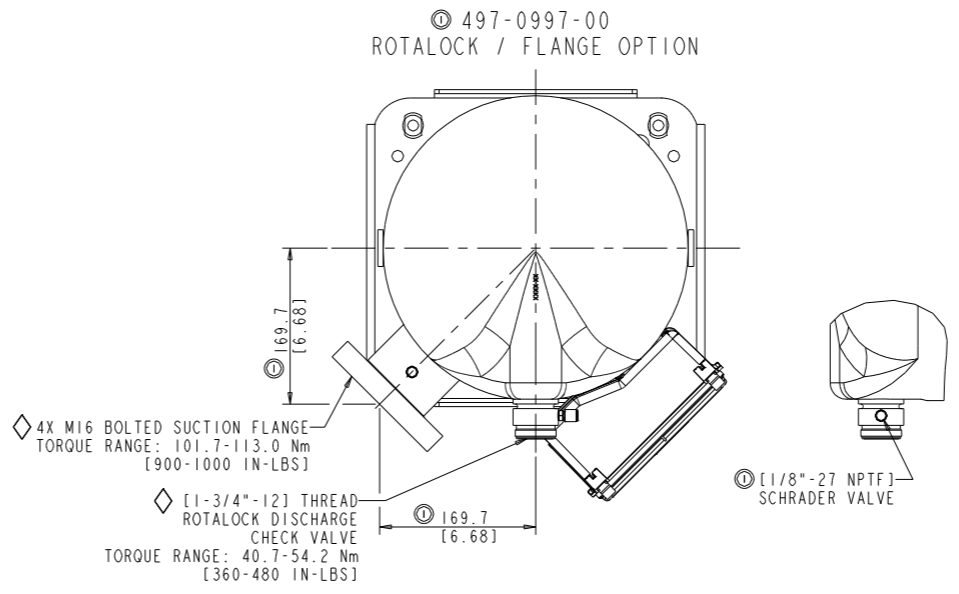
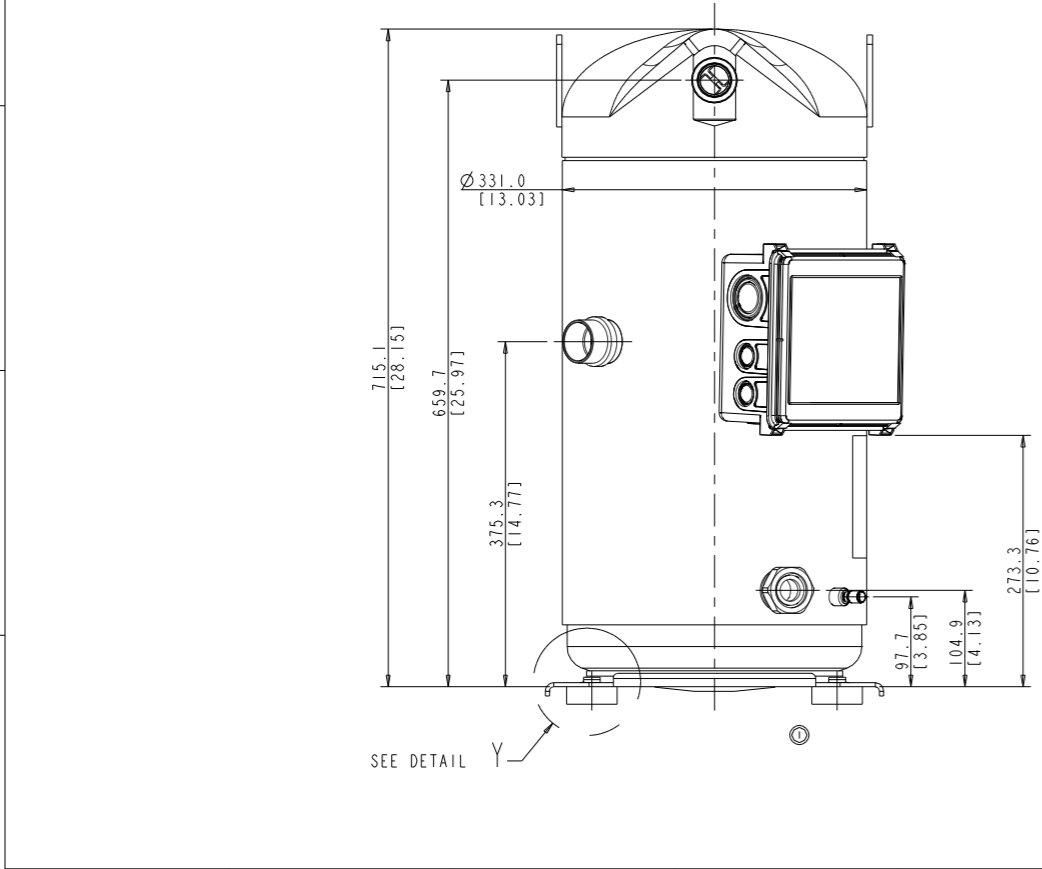
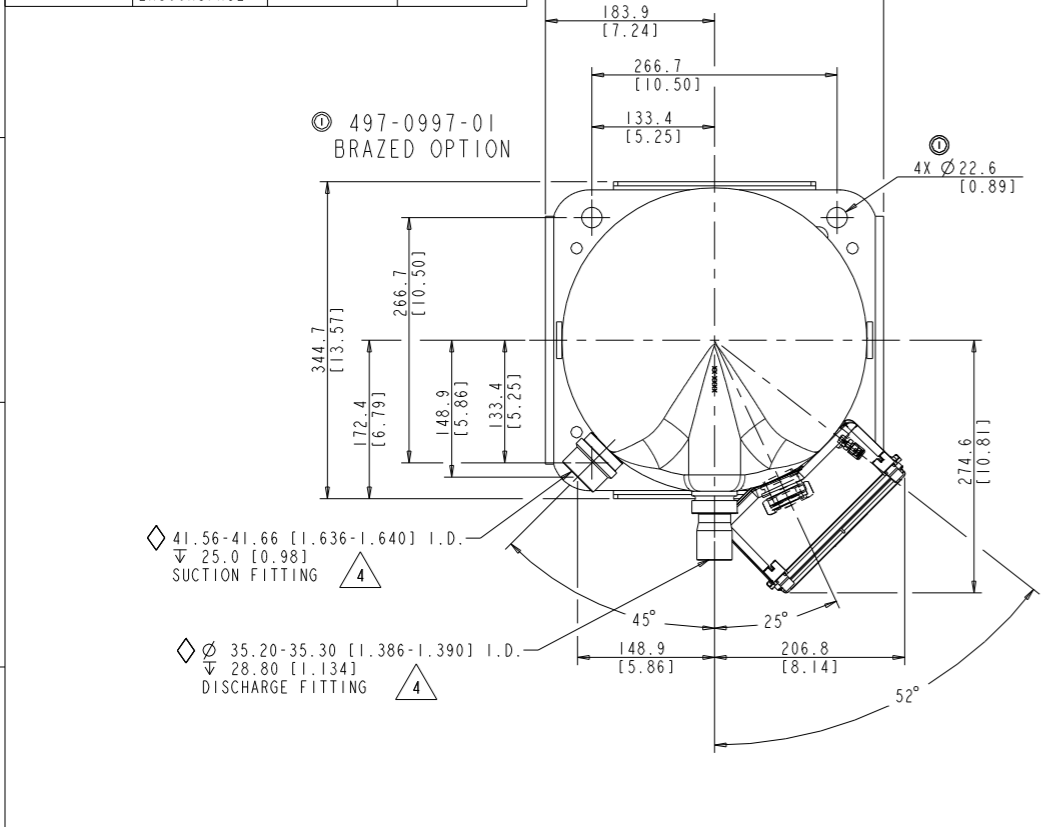


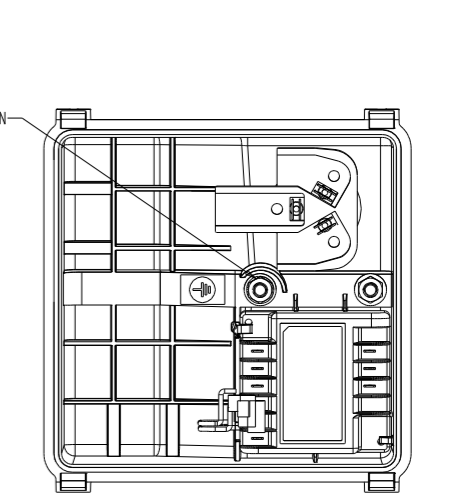
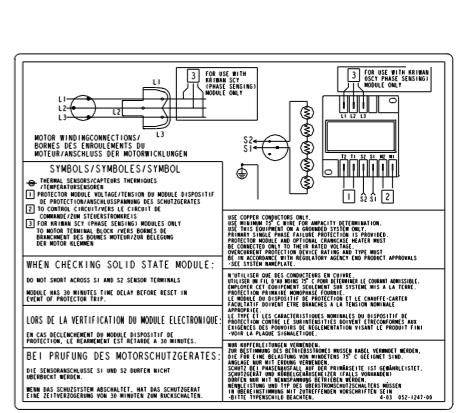
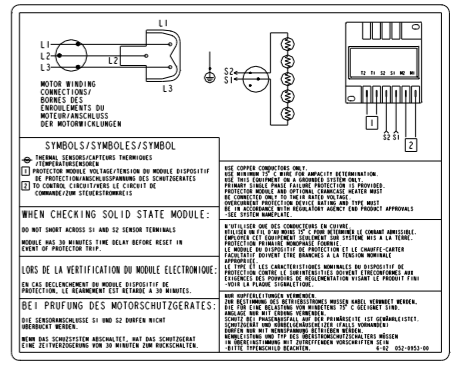
PART NUMBER	MODEL NUMBER	MOUNTING KIT	CUSTOMER CONNECTIONS
497-0997-00	ZR300KC/KCE ZP285KCE	527-0175-00	ROTALOCK / FLANGE
497-0997-01	ZP295KCE ZR310KC/KCE ZR380KC/KCE ZP385KCE	527-0175-02	BRAZED
497-0997-02	ZP285KCE ZP295KCE ZR310KC/KCE ZR380KC/KCE ZP385KCE	527-0175-00 527-0175-02	ROTALOCK
497-0997-03	ZP285KCE ZR300KC/KCE	527-0175-00	BRAZED

SPECIFICATIONS	
ES NO.	DESCRIPTION
ES92-155	CONVERSION-METRIC
ES81-340	TORQUE SPEC



NOTES:

- ALL TOLERANCES  $\pm 1.50$  [0.060] UNLESS OTHERWISE SPECIFIED.
- DUE TO ACCUMULATED ASSEMBLY TOLERANCES THE LISTED COMPONENTS MAY VARY FROM THE MOUNTING HOLES AS SHOWN BELOW:
- ALL FITTINGS :  $\pm 3.0$  [0.12]
2. MOUNTING KIT.
3. TUBE ENDS MUST BE PLUGGED.
- 0.05 [0.002] MIN. THICK INTERIOR & EXTERIOR COPPER PLATED STEEL FITTING.



ECN003194	1	PICTORIALLY UPDATED	12-09-10	PAS/NJG/KJR
ECN002819	0	RELEASED	09-13-10	MPK/NJG/KJR
ENG NOTICE NO.	REV. NO.	REVISIONS	DATE	BY CHKD APPR
22				
CONFIDENTIALITY NOTICE: THIS DRAWING AND INFORMATION CONTAINED HEREIN ARE THE EXCLUSIVE PROPERTY OF EMERSON CLIMATE TECHNOLOGIES, INC. AND SHALL BE RETURNED UPON DEMAND AND SHALL NOT BE REPRODUCED IN WHOLE OR IN PART, DISCLOSED TO ANYONE ELSE OR USED WITHOUT THE WRITTEN CONSENT OF EMERSON CLIMATE TECHNOLOGIES, INC.				
MATERIAL SPECIFICATION		DRAWN BY	SUPERSEDES DWG. NO. / REV. NO.	
N/A		MPK	-	
DATE		SCALE	DATE FORMAT:	
09-13-10		1:4	MM-DD-YY	
TITLE		DRAWING NUMBER	SHEET 1 OF 1	
REF DWG- WELD COMP ASSM		497-0997-00	5	



INTERPRET PER ASME Y14.5M-1994 AND EMERSON CLIMATE TECHNOLOGIES, INC. DESIGN STANDARDS DS2002 DO NOT SCALE DRAWING THIRD ANGLE PROJECTION

CRITICAL PRODUCT CHARACTERISTIC UNLESS OTHERWISE SPECIFIED DIMENSIONS ARE MILLIMETER OR (INCH)

TOLERANCES:  
1-PLACE  $\pm$   
2-PLACE  $\pm$   
ANGULAR  $\pm 0.5^\circ$

COPYRIGHT EMERSON CLIMATE TECHNOLOGIES, INC. - CONFIDENTIAL