



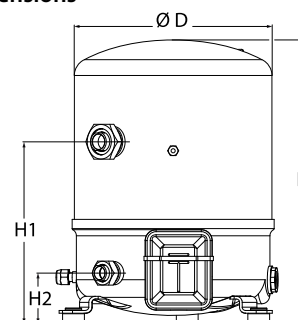
Datasheets

Maneurop[®] Reciprocating compressors MT / MTZ / MPZ / NTZ



General Characteristics

Model number (on compressor nameplate)		MT44HJ4A
Code number for Industrial pack**		MT44-4M
Drawing number		8502014e
Suction and discharge connections		Rotolock
Suction connection		1-3/4 " Rotolock
Discharge connection		1-1/4 " Rotolock
Suction connection with supplied sleeve		7/8 " ODF
Discharge connection with supplied sleeve		3/4 " ODF
Oil sight glass		None
Oil equalisation connection		None
Oil drain connection		None
LP gauge port		Schrader
IPR valve		30 bar / 8 bar
Cylinders		2
Swept volume		76,22 cm ³ /rev
Displacement @ Nominal speed		13.3 m ³ /h @ 2900 rpm - 16.0 m ³ /h @ 3500 rpm
Net weight		35 kg
Oil charge		1,8 litre, Mineral - 160P
Maximum system test pressure Low Side / High side		25 bar(g) / 30 bar(g)
Maximum differential test pressure		30 bar
Maximum number of starts per hour		12
Refrigerant charge limit		5 kg
Approved refrigerants		R22, R417A-160PZ

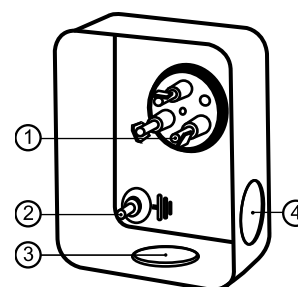
Dimensions


D=288 mm

H=413 mm

H1=265 mm

H2=74 mm

Terminal box


IP55 (with cable gland)

1: Spade connectors 1/4"

2: Earth M4-12

3: Knock-out Ø 21 mm (0.83")

4: Hole Ø 21 mm (0.83")

Electrical Characteristics

Nominal voltage	380-400V/3/50Hz - 460V/3/60Hz
Voltage range	340-440 V @ 50Hz - 414-506 V @ 60Hz
Winding resistance (between phases) +/- 7% at 25°C	3.8 Ω
Maximum Continuous Current (MCC)	9.5 A
Locked Rotor Amps (LRA)	42 A
Motor protection	Internal overload protector

Recommended Installation torques

Oil sight glass	0 Nm
Power connections / Earth connection	Nm / 2 Nm
Mounting bolts	15 Nm

Parts shipped with compressor

Mounting kit with grommets, bolts, nuts, sleeves and washers
Initial oil charge
Installation instructions

Approvals : CE certified, UL certified (file SA6873), -

*Singlepack: Compressor in cardboard box

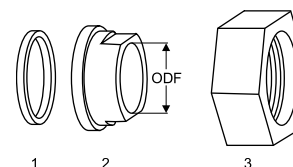
**Industrial pack: 6 Unboxed compressors on pallet (order per multiples of 6)

Rotolock accessories, suction side

Code no.

Solder sleeve, P07 (1-3/4" Rotolock, 7/8" ODF)	8153013
Angle adapter, C07 (1-3/4" Rotolock, 7/8" ODF)	8168008
Rotolock valve, V07 (1-3/4" Rotolock, 7/8" ODF)	8168032
Gasket, 1-3/4"	8156132

Gaskets, sleeves and nuts



- 1: Gasket
- 2: Solder sleeve
- 3: Rotolock nut

Rotolock accessories, discharge side

Code no.

Solder sleeve, P04 (1-1/4" Rotolock, 3/4" ODF)	8153008
Angle adapter, C04 (1-1/4" Rotolock, 3/4" ODF)	8168006
Rotolock valve, V04 (1-1/4" Rotolock, 3/4" ODF)	8168029
Gasket, 1-1/4"	8156131

Rotolock accessories, sets

Code no.

Angle adapter set, C07 (1-3/4"~7/8"), C04 (1-1/4"~3/4")	7703013
Valve set, V07 (1-3/4"~7/8"), V04 (1-1/4"~3/4")	7703006
Gasket set, 1", 1-1/4", 1-3/4", OSG gaskets black & white	8156009

Oil / lubricants

Code no.

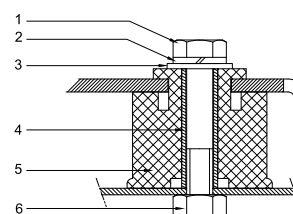
Mineral oil, 160P, 2 litre can	7754001
Mineral oil, 160P, 5 litre can	7754002

Crankcase heaters

Code no.

PTC heater 27W	120Z0459
Belt type crankcase heater, 65 W, 230 V, CE mark, UL	7773107
Belt type crankcase heater, 65 W, 400 V, CE mark, UL	7773117
Belt type crankcase heater, 65 W, 460 V, CE mark, UL	120Z0466

Mounting kit



- 1: Bolt (3x)
- 2: Lock washer (3x)
- 3: Flat washer (3x)
- 4: Sleeve (3x)
- 5: Grommet (3x)
- 6: Nut (3x)

Miscellaneous accessories

Code no.

Electronic soft start kit, MCI 15 C	7705006
Soft start kit with statoric resistors, prewired box, SCR01	7702003
Acoustic hood for 2 cylinder compressor	7755002

Spare parts

Code no.

Mounting kit for 1 and 2 cylinder compressor, including 3 grommets, 3 bolts	8156001
Service kit for terminal box 80 x 96 mm, including 1 cover, 1 clamp	8156134

Danfoss can accept no responsibility for possible errors in catalogues, brochures and other printed material. Danfoss reserves the right to alter its products without notice. This also applies to products already on order provided that such alternations can be made without subsequential changes being necessary in specifications already agreed. All trademarks in this material are property of the respective companies. Danfoss, the Danfoss logotype and Maneurop are trademarks of Danfoss A/S. All rights reserved.

Performance data at 50 Hz, EN 12900 rating conditions
R22

Cond. temp. in °C (tc)	Evaporating temperature in °C (to)								
	-25	-20	-15	-10	-5	0	5	10	15

Cooling capacity in W

30	2 955	3 936	5 150	6 635	8 424	10 554	13 060	15 978	19 343
35	2 676	3 615	4 775	6 192	7 901	9 938	12 337	15 134	18 365
40	2 419	3 308	4 406	5 748	7 369	9 304	11 588	14 257	17 347
45	2 183	3 014	4 042	5 300	6 824	8 648	10 808	13 340	16 278
50	-	2 740	3 689	4 856	6 275	7 982	10 012	12 399	15 179
55	-	-	3 347	4 415	5 722	7 303	9 193	11 427	14 039
60	-	-	-	3 979	5 165	6 611	8 353	10 424	12 860
65	-	-	-	-	4 612	5 917	7 503	9 405	11 657

Power input in W

30	1 552	1 813	2 053	2 259	2 419	2 522	2 556	2 508	2 368
35	1 663	1 939	2 197	2 427	2 616	2 752	2 823	2 817	2 723
40	1 752	2 045	2 326	2 583	2 803	2 975	3 086	3 126	3 081
45	1 815	2 130	2 436	2 722	2 977	3 188	3 343	3 431	3 439
50	-	2 188	2 523	2 843	3 135	3 388	3 590	3 730	3 794
55	-	-	2 584	2 940	3 274	3 572	3 824	4 018	4 141
60	-	-	-	3 012	3 389	3 736	4 041	4 293	4 478
65	-	-	-	-	3 478	3 877	4 238	4 551	4 802

Current consumption in A

30	5.05	5.23	5.41	5.59	5.74	5.85	5.88	5.83	5.67
35	5.13	5.33	5.54	5.74	5.93	6.07	6.15	6.14	6.04
40	5.20	5.41	5.65	5.89	6.11	6.30	6.43	6.48	6.44
45	5.25	5.49	5.75	6.03	6.30	6.53	6.71	6.83	6.85
50	-	5.54	5.84	6.16	6.47	6.76	7.00	7.18	7.28
55	-	-	5.90	6.27	6.64	6.98	7.29	7.54	7.71
60	-	-	-	6.36	6.78	7.19	7.57	7.89	8.14
65	-	-	-	-	6.90	7.38	7.83	8.23	8.57

Mass flow in kg/h

30	64	85	110	139	174	215	263	319	382
35	60	81	106	135	170	211	259	314	377
40	57	77	101	130	165	206	253	308	371
45	54	74	97	126	159	199	246	300	362
50	-	70	93	120	153	192	238	291	353
55	-	-	89	115	147	185	229	281	341
60	-	-	-	109	140	176	220	270	329
65	-	-	-	-	133	167	209	258	315

Coefficient of performance (C.O.P.)

30	1.90	2.17	2.51	2.94	3.48	4.18	5.11	6.37	8.17
35	1.61	1.86	2.17	2.55	3.02	3.61	4.37	5.37	6.74
40	1.38	1.62	1.89	2.23	2.63	3.13	3.75	4.56	5.63
45	1.20	1.42	1.66	1.95	2.29	2.71	3.23	3.89	4.73
50	-	1.25	1.46	1.71	2.00	2.36	2.79	3.32	4.00
55	-	-	1.30	1.50	1.75	2.04	2.40	2.84	3.39
60	-	-	-	1.32	1.52	1.77	2.07	2.43	2.87
65	-	-	-	-	1.33	1.53	1.77	2.07	2.43

Nominal performance at to = 5 °C, tc = 50 °C

Cooling capacity	10 012	W
Power input	3 590	W
Current consumption	7.00	A
Mass flow	238	kg/h
C.O.P.	2.79	

Pressure switch settings

Maximum HP switch setting	27.7	bar(g)
Minimum LP switch setting	0.2	bar(g)
LP pump down setting	0.9	bar(g)

Sound power data

Sound power level	0	dB(A)
With acoustic hood	0	dB(A)

to: Evaporating temperature at dew point

tc: Condensing temperature at dew point

Rating conditions : Superheat = 10 K , Subcooling = 0 K

All performance data +/- 5%

Danfoss can accept no responsibility for possible errors in catalogues, brochures and other printed material. Danfoss reserves the right to alter its products without notice. This also applies to products already on order provided that such alterations can be made without subsequential changes being necessary in specifications already agreed. All trademarks in this material are property of the respective companies. Danfoss, the Danfoss logotype and Maneurop are trademarks of Danfoss A/S. All rights reserved.

Performance data at 50 Hz, ARI rating conditions

R22

Cond. temp. in °C (tc)	Evaporating temperature in °C (to)								
	-25	-20	-15	-10	-5	0	5	10	15

Cooling capacity in W

30	3 138	4 176	5 460	7 029	8 918	11 165	13 807	16 880	20 422
35	2 852	3 850	5 081	6 583	8 393	10 548	13 084	16 040	19 451
40	2 588	3 536	4 705	6 133	7 855	9 909	12 332	15 161	18 432
45	2 347	3 237	4 336	5 680	7 306	9 251	11 552	14 246	17 370
50	-	2 957	3 977	5 229	6 750	8 577	10 748	13 298	16 265
55	-	-	3 629	4 781	6 189	7 890	9 921	12 319	15 122
60	-	-	-	4 340	5 626	7 192	9 076	11 313	13 942
65	-	-	-	-	5 064	6 487	8 214	10 283	12 729

Power input in W

30	1 552	1 813	2 053	2 259	2 419	2 522	2 556	2 508	2 368
35	1 663	1 939	2 197	2 427	2 616	2 752	2 823	2 817	2 723
40	1 752	2 045	2 326	2 583	2 803	2 975	3 086	3 126	3 081
45	1 815	2 130	2 436	2 722	2 977	3 188	3 343	3 431	3 439
50	-	2 188	2 523	2 843	3 135	3 388	3 590	3 730	3 794
55	-	-	2 584	2 940	3 274	3 572	3 824	4 018	4 141
60	-	-	-	3 012	3 389	3 736	4 041	4 293	4 478
65	-	-	-	-	3 478	3 877	4 238	4 551	4 802

Current consumption in A

30	5.05	5.23	5.41	5.59	5.74	5.85	5.88	5.83	5.67
35	5.13	5.33	5.54	5.74	5.93	6.07	6.15	6.14	6.04
40	5.20	5.41	5.65	5.89	6.11	6.30	6.43	6.48	6.44
45	5.25	5.49	5.75	6.03	6.30	6.53	6.71	6.83	6.85
50	-	5.54	5.84	6.16	6.47	6.76	7.00	7.18	7.28
55	-	-	5.90	6.27	6.64	6.98	7.29	7.54	7.71
60	-	-	-	6.36	6.78	7.19	7.57	7.89	8.14
65	-	-	-	-	6.90	7.38	7.83	8.23	8.57

Mass flow in kg/h

30	64	84	109	138	173	214	262	317	380
35	60	81	105	134	169	210	257	312	375
40	57	77	101	130	164	204	252	306	368
45	54	73	97	125	159	198	245	298	360
50	-	70	92	120	153	191	237	290	351
55	-	-	88	114	146	184	228	280	339
60	-	-	-	109	139	175	218	269	327
65	-	-	-	-	132	167	208	257	313

Coefficient of performance (C.O.P.)

30	2.02	2.30	2.66	3.11	3.69	4.43	5.40	6.73	8.63
35	1.72	1.99	2.31	2.71	3.21	3.83	4.64	5.69	7.14
40	1.48	1.73	2.02	2.37	2.80	3.33	4.00	4.85	5.98
45	1.29	1.52	1.78	2.09	2.45	2.90	3.46	4.15	5.05
50	-	1.35	1.58	1.84	2.15	2.53	2.99	3.57	4.29
55	-	-	1.40	1.63	1.89	2.21	2.59	3.07	3.65
60	-	-	-	1.44	1.66	1.93	2.25	2.64	3.11
65	-	-	-	-	1.46	1.67	1.94	2.26	2.65

Nominal performance at to = 7.2 °C, tc = 54.4 °C

Cooling capacity	11 037	W
Power input	3 887	W
Current consumption	7.37	A
Mass flow	251	kg/h
C.O.P.	2.84	

Pressure switch settings

Maximum HP switch setting	27.7	bar(g)
Minimum LP switch setting	0.2	bar(g)
LP pump down setting	0.9	bar(g)

Sound power data

Sound power level	0	dB(A)
With acoustic hood	0	dB(A)

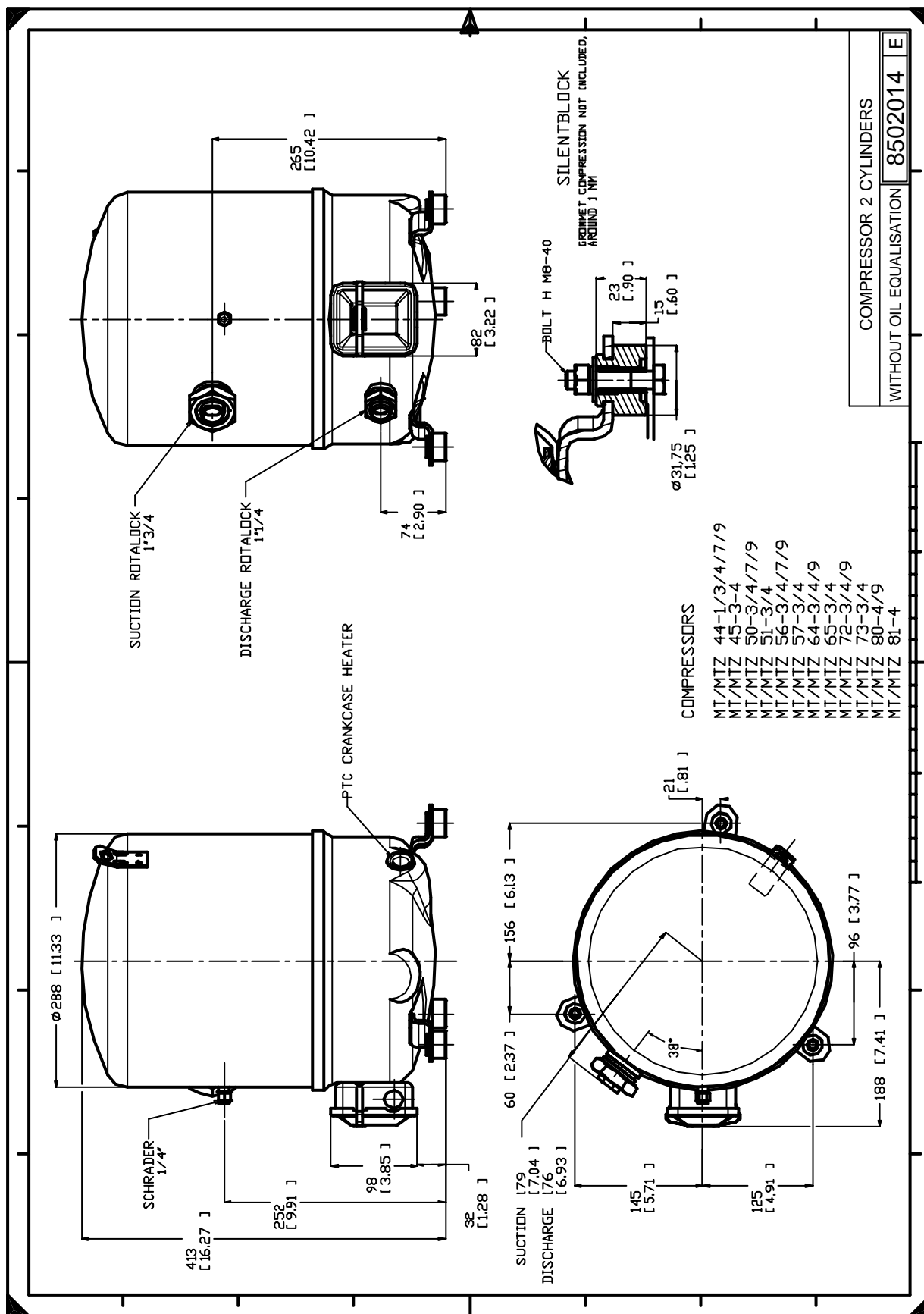
to: Evaporating temperature at dew point

tc: Condensing temperature at dew point

Rating conditions : Superheat = 11.1 K , Subcooling = 8.3 K

All performance data +/- 5%

Danfoss can accept no responsibility for possible errors in catalogues, brochures and other printed material. Danfoss reserves the right to alter its products without notice. This also applies to products already on order provided that such alternations can be made without subsequential changes being necessary in specifications already agreed. All trademarks in this material are property of the respective companies. Danfoss, the Danfoss logotype and Maneurop are trademarks of Danfoss A/S. All rights reserved.

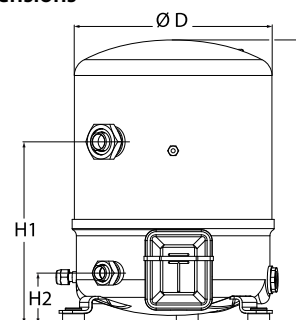


Danfoss can accept no responsibility for possible errors in catalogues, brochures and other printed material. Danfoss reserves the right to alter its products without notice. This also applies to products already on order provided that such alternations can be made without subsequential changes being necessary in specifications already agreed. All trademarks in this material are property of the respective companies. Danfoss, the Danfoss logotype and Maneurop are trademarks of Danfoss A/S. All rights reserved.

General Characteristics

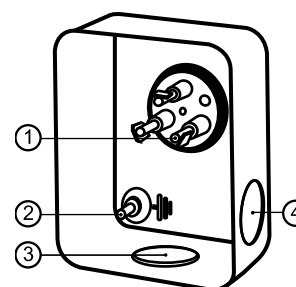
Model number (on compressor nameplate)		MT44HJ4AVE
Code number for Singlepack*		MT44-4VI
Code number for Industrial pack**		MT44-4VM
Drawing number		8502012g
Suction and discharge connections		Rotolock
Suction connection		1-3/4 " Rotolock
Discharge connection		1-1/4 " Rotolock
Suction connection with supplied sleeve		7/8 " ODF
Discharge connection with supplied sleeve		3/4 " ODF
Oil sight glass		Threaded
Oil equalisation connection		3/8" flare SAE
Oil drain connection		None
LP gauge port		Schrader
IPR valve		30 bar / 8 bar
Cylinders		2
Swept volume		76,22 cm ³ /rev
Displacement @ Nominal speed		13.3 m ³ /h @ 2900 rpm - 16.0 m ³ /h @ 3500 rpm
Net weight		35 kg
Oil charge		1,8 litre, Mineral - 160P
Maximum system test pressure Low Side / High side		25 bar(g) / 30 bar(g)
Maximum differential test pressure		30 bar
Maximum number of starts per hour		12
Refrigerant charge limit		5 kg
Approved refrigerants		R22, R417A-160PZ

Dimensions



D=288 mm
H=413 mm
H1=265 mm
H2=74 mm

Terminal box



IP55 (with cable gland)

- 1: Spade connectors 1/4"
- 2: Earth M4-12
- 3: Knock-out Ø 21 mm (0.83")
- 4: Hole Ø 21 mm (0.83")

Electrical Characteristics

Nominal voltage	380-400V/3/50Hz - 460V/3/60Hz
Voltage range	340-440 V @ 50Hz - 414-506 V @ 60Hz
Winding resistance (between phases) +/- 7% at 25°C	3.8 Ω
Maximum Continuous Current (MCC)	9.5 A
Locked Rotor Amps (LRA)	42 A
Motor protection	Internal overload protector

Recommended Installation torques

Oil sight glass	50 Nm
Power connections / Earth connection	Nm / 2 Nm
Mounting bolts	15 Nm

Parts shipped with compressor

Mounting kit with grommets, bolts, nuts, sleeves and washers
Suction & Discharge solder sleeves, rotolock nuts and gaskets (shipped with rotolock version only)
Initial oil charge
Installation instructions

Approvals : CE certified, UL certified (file SA6873), CCC certified

*Singlepack: Compressor in cardboard box

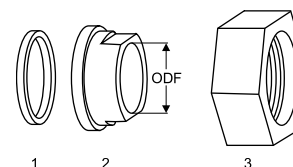
**Industrial pack: 6 Unboxed compressors on pallet (order per multiples of 6)

Rotolock accessories, suction side

Code no.

Solder sleeve, P07 (1-3/4" Rotolock, 7/8" ODF)	8153013
Angle adapter, C07 (1-3/4" Rotolock, 7/8" ODF)	8168008
Rotolock valve, V07 (1-3/4" Rotolock, 7/8" ODF)	8168032
Gasket, 1-3/4"	8156132

Gaskets, sleeves and nuts



- 1: Gasket
- 2: Solder sleeve
- 3: Rotolock nut

Rotolock accessories, discharge side

Code no.

Solder sleeve, P04 (1-1/4" Rotolock, 3/4" ODF)	8153008
Angle adapter, C04 (1-1/4" Rotolock, 3/4" ODF)	8168006
Rotolock valve, V04 (1-1/4" Rotolock, 3/4" ODF)	8168029
Gasket, 1-1/4"	8156131

Rotolock accessories, sets

Code no.

Angle adapter set, C07 (1-3/4"~7/8"), C04 (1-1/4"~3/4")	7703013
Valve set, V07 (1-3/4"~7/8"), V04 (1-1/4"~3/4")	7703006
Gasket set, 1", 1-1/4", 1-3/4", OSG gaskets black & white	8156009

Oil / lubricants

Code no.

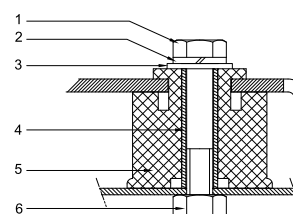
Mineral oil, 160P, 2 litre can	7754001
Mineral oil, 160P, 5 litre can	7754002

Crankcase heaters

Code no.

PTC heater 27W	120Z0459
Belt type crankcase heater, 65 W, 230 V, CE mark, UL	7773107
Belt type crankcase heater, 65 W, 400 V, CE mark, UL	7773117
Belt type crankcase heater, 65 W, 460 V, CE mark, UL	120Z0466

Mounting kit



- 1: Bolt (3x)
- 2: Lock washer (3x)
- 3: Flat washer (3x)
- 4: Sleeve (3x)
- 5: Grommet (3x)
- 6: Nut (3x)

Miscellaneous accessories

Code no.

Electronic soft start kit, MCI 15 C	7705006
Soft start kit with statoric resistors, prewired box, SCR01	7702003
Acoustic hood for 2 cylinder compressor	7755002
Oil equalisation nut	8153127

Spare parts

Code no.

Mounting kit for 1 and 2 cylinder compressor, including 3 grommets, 3 bolts	8156001
Oil sight glass with gaskets (black & white)	8156019
Gasket for oil sight glass (black chloroprene)	8156145
Service kit for terminal box 80 x 96 mm, including 1 cover, 1 clamp	8156134

Danfoss can accept no responsibility for possible errors in catalogues, brochures and other printed material. Danfoss reserves the right to alter its products without notice. This also applies to products already on order provided that such alternations can be made without subsequential changes being necessary in specifications already agreed. All trademarks in this material are property of the respective companies. Danfoss, the Danfoss logotype and Maneurop are trademarks of Danfoss A/S. All rights reserved.

Performance data at 50 Hz, EN 12900 rating conditions
R22

Cond. temp. in °C (tc)	Evaporating temperature in °C (to)								
	-25	-20	-15	-10	-5	0	5	10	15

Cooling capacity in W

30	2 955	3 936	5 150	6 635	8 424	10 554	13 060	15 978	19 343
35	2 676	3 615	4 775	6 192	7 901	9 938	12 337	15 134	18 365
40	2 419	3 308	4 406	5 748	7 369	9 304	11 588	14 257	17 347
45	2 183	3 014	4 042	5 300	6 824	8 648	10 808	13 340	16 278
50	-	2 740	3 689	4 856	6 275	7 982	10 012	12 399	15 179
55	-	-	3 347	4 415	5 722	7 303	9 193	11 427	14 039
60	-	-	-	3 979	5 165	6 611	8 353	10 424	12 860
65	-	-	-	-	4 612	5 917	7 503	9 405	11 657

Power input in W

30	1 552	1 813	2 053	2 259	2 419	2 522	2 556	2 508	2 368
35	1 663	1 939	2 197	2 427	2 616	2 752	2 823	2 817	2 723
40	1 752	2 045	2 326	2 583	2 803	2 975	3 086	3 126	3 081
45	1 815	2 130	2 436	2 722	2 977	3 188	3 343	3 431	3 439
50	-	2 188	2 523	2 843	3 135	3 388	3 590	3 730	3 794
55	-	-	2 584	2 940	3 274	3 572	3 824	4 018	4 141
60	-	-	-	3 012	3 389	3 736	4 041	4 293	4 478
65	-	-	-	-	3 478	3 877	4 238	4 551	4 802

Current consumption in A

30	5.05	5.23	5.41	5.59	5.74	5.85	5.88	5.83	5.67
35	5.13	5.33	5.54	5.74	5.93	6.07	6.15	6.14	6.04
40	5.20	5.41	5.65	5.89	6.11	6.30	6.43	6.48	6.44
45	5.25	5.49	5.75	6.03	6.30	6.53	6.71	6.83	6.85
50	-	5.54	5.84	6.16	6.47	6.76	7.00	7.18	7.28
55	-	-	5.90	6.27	6.64	6.98	7.29	7.54	7.71
60	-	-	-	6.36	6.78	7.19	7.57	7.89	8.14
65	-	-	-	-	6.90	7.38	7.83	8.23	8.57

Mass flow in kg/h

30	64	85	110	139	174	215	263	319	382
35	60	81	106	135	170	211	259	314	377
40	57	77	101	130	165	206	253	308	371
45	54	74	97	126	159	199	246	300	362
50	-	70	93	120	153	192	238	291	353
55	-	-	89	115	147	185	229	281	341
60	-	-	-	109	140	176	220	270	329
65	-	-	-	-	133	167	209	258	315

Coefficient of performance (C.O.P.)

30	1.90	2.17	2.51	2.94	3.48	4.18	5.11	6.37	8.17
35	1.61	1.86	2.17	2.55	3.02	3.61	4.37	5.37	6.74
40	1.38	1.62	1.89	2.23	2.63	3.13	3.75	4.56	5.63
45	1.20	1.42	1.66	1.95	2.29	2.71	3.23	3.89	4.73
50	-	1.25	1.46	1.71	2.00	2.36	2.79	3.32	4.00
55	-	-	1.30	1.50	1.75	2.04	2.40	2.84	3.39
60	-	-	-	1.32	1.52	1.77	2.07	2.43	2.87
65	-	-	-	-	1.33	1.53	1.77	2.07	2.43

Nominal performance at to = 5 °C, tc = 50 °C

Cooling capacity	10 012	W
Power input	3 590	W
Current consumption	7.00	A
Mass flow	238	kg/h
C.O.P.	2.79	

Pressure switch settings

Maximum HP switch setting	27.7	bar(g)
Minimum LP switch setting	0.2	bar(g)
LP pump down setting	0.9	bar(g)

Sound power data

Sound power level	0	dB(A)
With acoustic hood	0	dB(A)

to: Evaporating temperature at dew point

tc: Condensing temperature at dew point

Rating conditions : Superheat = 10 K , Subcooling = 0 K

All performance data +/- 5%

Danfoss can accept no responsibility for possible errors in catalogues, brochures and other printed material. Danfoss reserves the right to alter its products without notice. This also applies to products already on order provided that such alterations can be made without subsequential changes being necessary in specifications already agreed. All trademarks in this material are property of the respective companies. Danfoss, the Danfoss logotype and Maneurop are trademarks of Danfoss A/S. All rights reserved.

Performance data at 50 Hz, ARI rating conditions

R22

Cond. temp. in °C (tc)	Evaporating temperature in °C (to)								
	-25	-20	-15	-10	-5	0	5	10	15

Cooling capacity in W

30	3 138	4 176	5 460	7 029	8 918	11 165	13 807	16 880	20 422
35	2 852	3 850	5 081	6 583	8 393	10 548	13 084	16 040	19 451
40	2 588	3 536	4 705	6 133	7 855	9 909	12 332	15 161	18 432
45	2 347	3 237	4 336	5 680	7 306	9 251	11 552	14 246	17 370
50	-	2 957	3 977	5 229	6 750	8 577	10 748	13 298	16 265
55	-	-	3 629	4 781	6 189	7 890	9 921	12 319	15 122
60	-	-	-	4 340	5 626	7 192	9 076	11 313	13 942
65	-	-	-	-	5 064	6 487	8 214	10 283	12 729

Power input in W

30	1 552	1 813	2 053	2 259	2 419	2 522	2 556	2 508	2 368
35	1 663	1 939	2 197	2 427	2 616	2 752	2 823	2 817	2 723
40	1 752	2 045	2 326	2 583	2 803	2 975	3 086	3 126	3 081
45	1 815	2 130	2 436	2 722	2 977	3 188	3 343	3 431	3 439
50	-	2 188	2 523	2 843	3 135	3 388	3 590	3 730	3 794
55	-	-	2 584	2 940	3 274	3 572	3 824	4 018	4 141
60	-	-	-	3 012	3 389	3 736	4 041	4 293	4 478
65	-	-	-	-	3 478	3 877	4 238	4 551	4 802

Current consumption in A

30	5.05	5.23	5.41	5.59	5.74	5.85	5.88	5.83	5.67
35	5.13	5.33	5.54	5.74	5.93	6.07	6.15	6.14	6.04
40	5.20	5.41	5.65	5.89	6.11	6.30	6.43	6.48	6.44
45	5.25	5.49	5.75	6.03	6.30	6.53	6.71	6.83	6.85
50	-	5.54	5.84	6.16	6.47	6.76	7.00	7.18	7.28
55	-	-	5.90	6.27	6.64	6.98	7.29	7.54	7.71
60	-	-	-	6.36	6.78	7.19	7.57	7.89	8.14
65	-	-	-	-	6.90	7.38	7.83	8.23	8.57

Mass flow in kg/h

30	64	84	109	138	173	214	262	317	380
35	60	81	105	134	169	210	257	312	375
40	57	77	101	130	164	204	252	306	368
45	54	73	97	125	159	198	245	298	360
50	-	70	92	120	153	191	237	290	351
55	-	-	88	114	146	184	228	280	339
60	-	-	-	109	139	175	218	269	327
65	-	-	-	-	132	167	208	257	313

Coefficient of performance (C.O.P.)

30	2.02	2.30	2.66	3.11	3.69	4.43	5.40	6.73	8.63
35	1.72	1.99	2.31	2.71	3.21	3.83	4.64	5.69	7.14
40	1.48	1.73	2.02	2.37	2.80	3.33	4.00	4.85	5.98
45	1.29	1.52	1.78	2.09	2.45	2.90	3.46	4.15	5.05
50	-	1.35	1.58	1.84	2.15	2.53	2.99	3.57	4.29
55	-	-	1.40	1.63	1.89	2.21	2.59	3.07	3.65
60	-	-	-	1.44	1.66	1.93	2.25	2.64	3.11
65	-	-	-	-	1.46	1.67	1.94	2.26	2.65

Nominal performance at to = 7.2 °C, tc = 54.4 °C

Cooling capacity	11 037	W
Power input	3 887	W
Current consumption	7.37	A
Mass flow	251	kg/h
C.O.P.	2.84	

Pressure switch settings

Maximum HP switch setting	27.7	bar(g)
Minimum LP switch setting	0.2	bar(g)
LP pump down setting	0.9	bar(g)

Sound power data

Sound power level	0	dB(A)
With acoustic hood	0	dB(A)

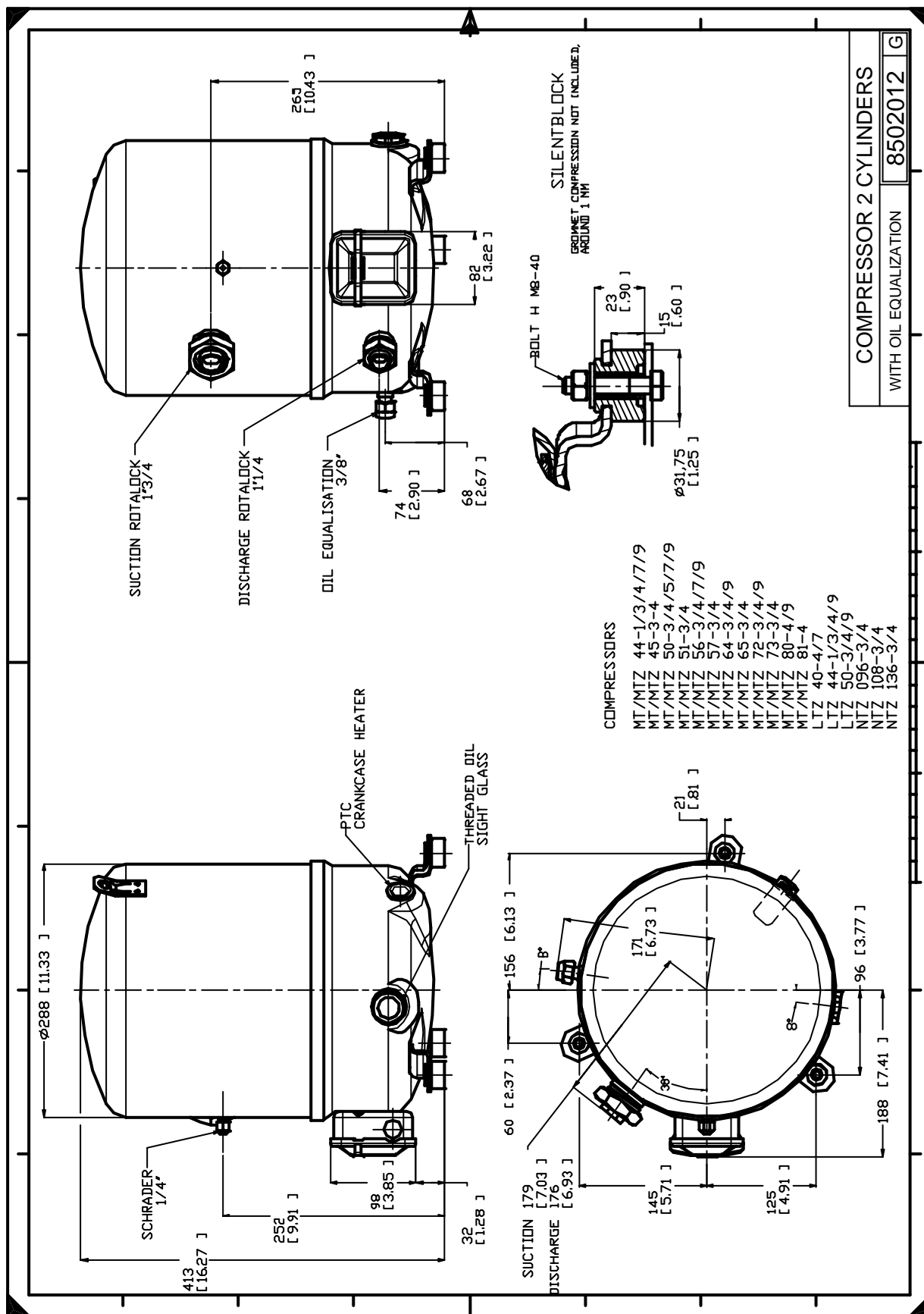
to: Evaporating temperature at dew point

tc: Condensing temperature at dew point

Rating conditions : Superheat = 11.1 K , Subcooling = 8.3 K

All performance data +/- 5%

Danfoss can accept no responsibility for possible errors in catalogues, brochures and other printed material. Danfoss reserves the right to alter its products without notice. This also applies to products already on order provided that such alternations can be made without subsequential changes being necessary in specifications already agreed. All trademarks in this material are property of the respective companies. Danfoss, the Danfoss logotype and Maneurop are trademarks of Danfoss A/S. All rights reserved.



Danfoss can accept no responsibility for possible errors in catalogues, brochures and other printed material. Danfoss reserves the right to alter its products without notice. This also applies to products already on order provided that such alternations can be made without consequential changes being necessary in specifications already agreed. All trademarks in this material are property of the respective companies. Danfoss, the Danfoss logotype and Maneurop are trademarks of Danfoss A/S. All rights reserved.