



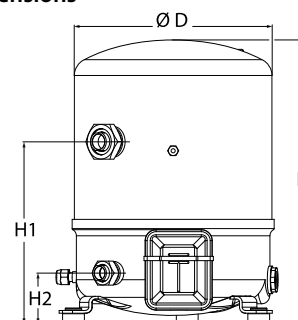
Datasheets

# Maneurop<sup>®</sup> Reciprocating compressors MT / MTZ / MPZ / NTZ



**General Characteristics**

Model number (on compressor nameplate)		<b>MT50HK4B</b>
Code number for Industrial pack**		MT50-4M
Drawing number		8502014e
Suction and discharge connections		Rotolock
Suction connection		1-3/4" Rotolock
Discharge connection		1-1/4" Rotolock
Suction connection with supplied sleeve		7/8" ODF
Discharge connection with supplied sleeve		3/4" ODF
Oil sight glass		None
Oil equalisation connection		None
Oil drain connection		None
LP gauge port		Schrader
IPR valve		30 bar / 8 bar
Cylinders		2
Swept volume		85,64 cm <sup>3</sup> /rev
Displacement @ Nominal speed		14.9 m <sup>3</sup> /h @ 2900 rpm - 18.0 m <sup>3</sup> /h @ 3500 rpm
Net weight		35 kg
Oil charge		1,8 litre, Mineral - 160P
Maximum system test pressure Low Side / High side		25 bar(g) / 30 bar(g)
Maximum differential test pressure		30 bar
Maximum number of starts per hour		12
Refrigerant charge limit		5 kg
Approved refrigerants		R22, R417A-160PZ

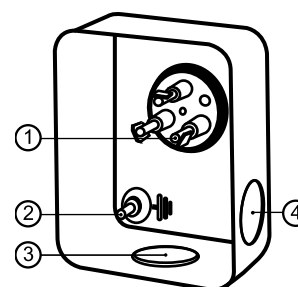
**Dimensions**


D=288 mm

H=413 mm

H1=265 mm

H2=74 mm

**Terminal box**


IP55 (with cable gland)

1: Spade connectors 1/4"

2: Earth M4-12

3: Knock-out Ø 21 mm (0.83")

4: Hole Ø 21 mm (0.83")

**Electrical Characteristics**

Nominal voltage	380-400V/3/50Hz - 460V/3/60Hz
Voltage range	340-440 V @ 50Hz - 414-506 V @ 60Hz
Winding resistance (between phases) +/- 7% at 25°C	3.8 Ω
Maximum Continuous Current (MCC)	12 A
Locked Rotor Amps (LRA)	42 A
Motor protection	Internal overload protector

**Recommended Installation torques**

Oil sight glass	0 Nm
Power connections / Earth connection	Nm / 2 Nm
Mounting bolts	15 Nm

**Parts shipped with compressor**

Mounting kit with grommets, bolts, nuts, sleeves and washers
Initial oil charge
Installation instructions

**Approvals** : CE certified, UL certified (file SA6873), -

\*Singlepack: Compressor in cardboard box

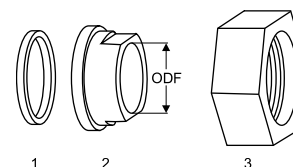
\*\*Industrial pack: 6 Unboxed compressors on pallet (order per multiples of 6)

**Rotolock accessories, suction side**

**Code no.**

Solder sleeve, P07 (1-3/4" Rotolock, 7/8" ODF)	8153013
Angle adapter, C07 (1-3/4" Rotolock, 7/8" ODF)	8168008
Rotolock valve, V07 (1-3/4" Rotolock, 7/8" ODF)	8168032
Gasket, 1-3/4"	8156132

**Gaskets, sleeves and nuts**



- 1: Gasket
- 2: Solder sleeve
- 3: Rotolock nut

**Rotolock accessories, discharge side**

**Code no.**

Solder sleeve, P04 (1-1/4" Rotolock, 3/4" ODF)	8153008
Angle adapter, C04 (1-1/4" Rotolock, 3/4" ODF)	8168006
Rotolock valve, V04 (1-1/4" Rotolock, 3/4" ODF)	8168029
Gasket, 1-1/4"	8156131

**Rotolock accessories, sets**

**Code no.**

Angle adapter set, C07 (1-3/4"~7/8"), C04 (1-1/4"~3/4")	7703013
Valve set, V07 (1-3/4"~7/8"), V04 (1-1/4"~3/4")	7703006
Gasket set, 1", 1-1/4", 1-3/4", OSG gaskets black & white	8156009

**Oil / lubricants**

**Code no.**

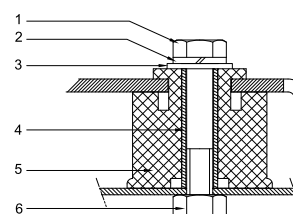
Mineral oil, 160P, 2 litre can	7754001
Mineral oil, 160P, 5 litre can	7754002

**Crankcase heaters**

**Code no.**

PTC heater 27W	120Z0459
Belt type crankcase heater, 65 W, 230 V, CE mark, UL	7773107
Belt type crankcase heater, 65 W, 400 V, CE mark, UL	7773117
Belt type crankcase heater, 65 W, 460 V, CE mark, UL	120Z0466

**Mounting kit**



- 1: Bolt (3x)
- 2: Lock washer (3x)
- 3: Flat washer (3x)
- 4: Sleeve (3x)
- 5: Grommet (3x)
- 6: Nut (3x)

**Miscellaneous accessories**

**Code no.**

Electronic soft start kit, MCI 15 C	7705006
Soft start kit with statoric resistors, prewired box, SCR01	7702003
Acoustic hood for 2 cylinder compressor	7755002

**Spare parts**

**Code no.**

Mounting kit for 1 and 2 cylinder compressor, including 3 grommets, 3 bolts	8156001
Service kit for terminal box 80 x 96 mm, including 1 cover, 1 clamp	8156134

Danfoss can accept no responsibility for possible errors in catalogues, brochures and other printed material. Danfoss reserves the right to alter its products without notice. This also applies to products already on order provided that such alternations can be made without subsequential changes being necessary in specifications already agreed. All trademarks in this material are property of the respective companies. Danfoss, the Danfoss logotype and Maneurop are trademarks of Danfoss A/S. All rights reserved.

**Performance data at 50 Hz, EN 12900 rating conditions**
**R22**

Cond. temp. in °C (tc)	Evaporating temperature in °C (to)								
	-25	-20	-15	-10	-5	0	5	10	15

**Cooling capacity in W**

30	3 436	4 479	5 782	7 386	9 331	11 660	14 414	17 635	21 363
35	3 074	4 079	5 332	6 873	8 744	10 986	13 640	16 749	20 353
40	2 724	3 684	4 879	6 350	8 140	10 288	12 836	15 826	19 299
45	2 385	3 291	4 421	5 815	7 514	9 560	11 993	14 855	18 187
50	-	2 909	3 966	5 276	6 879	8 815	11 126	13 854	17 038
55	-	-	3 514	4 731	6 230	8 049	10 231	12 815	15 844
60	-	-	-	4 183	5 569	7 262	9 305	11 738	14 601
65	-	-	-	-	4 905	6 466	8 364	10 638	13 328

**Power input in W**

30	1 668	1 952	2 230	2 493	2 733	2 941	3 108	3 226	3 286
35	1 789	2 083	2 374	2 653	2 912	3 143	3 336	3 482	3 575
40	1 896	2 202	2 508	2 806	3 086	3 342	3 562	3 740	3 867
45	1 986	2 307	2 630	2 949	3 253	3 535	3 786	3 997	4 160
50	-	2 395	2 738	3 079	3 410	3 721	4 004	4 250	4 451
55	-	-	2 830	3 196	3 554	3 896	4 214	4 498	4 739
60	-	-	-	3 295	3 684	4 059	4 413	4 737	5 021
65	-	-	-	-	3 796	4 207	4 600	4 965	5 294

**Current consumption in A**

30	4.12	4.16	4.33	4.58	4.89	5.19	5.46	5.66	5.73
35	4.16	4.23	4.44	4.76	5.14	5.54	5.92	6.24	6.46
40	4.21	4.32	4.59	4.98	5.44	5.94	6.44	6.89	7.25
45	4.27	4.43	4.76	5.22	5.77	6.38	7.00	7.58	8.10
50	-	4.52	4.92	5.46	6.11	6.83	7.57	8.30	8.98
55	-	-	5.05	5.68	6.44	7.27	8.15	9.03	9.87
60	-	-	-	5.87	6.73	7.69	8.71	9.74	10.75
65	-	-	-	-	6.98	8.07	9.23	10.42	11.61

**Mass flow in kg/h**

30	75	97	123	155	193	239	291	353	423
35	69	91	118	150	188	233	286	348	418
40	64	86	112	144	182	227	280	341	412
45	59	80	106	138	175	220	273	334	405
50	-	74	100	131	168	212	265	326	396
55	-	-	93	123	160	204	255	316	385
60	-	-	-	115	151	194	245	304	373
65	-	-	-	-	141	183	233	292	360

**Coefficient of performance (C.O.P.)**

30	2.06	2.29	2.59	2.96	3.41	3.97	4.64	5.47	6.50
35	1.72	1.96	2.25	2.59	3.00	3.50	4.09	4.81	5.69
40	1.44	1.67	1.95	2.26	2.64	3.08	3.60	4.23	4.99
45	1.20	1.43	1.68	1.97	2.31	2.70	3.17	3.72	4.37
50	-	1.21	1.45	1.71	2.02	2.37	2.78	3.26	3.83
55	-	-	1.24	1.48	1.75	2.07	2.43	2.85	3.34
60	-	-	-	1.27	1.51	1.79	2.11	2.48	2.91
65	-	-	-	-	1.29	1.54	1.82	2.14	2.52

**Nominal performance at to = 5 °C, tc = 50 °C**

Cooling capacity	11 126	W
Power input	4 004	W
Current consumption	7.57	A
Mass flow	265	kg/h
C.O.P.	2.78	

**Pressure switch settings**

Maximum HP switch setting	27.7	bar(g)
Minimum LP switch setting	0.2	bar(g)
LP pump down setting	0.9	bar(g)

**Sound power data**

Sound power level	0	dB(A)
With acoustic hood	0	dB(A)

to: Evaporating temperature at dew point

tc: Condensing temperature at dew point

Rating conditions : Superheat = 10 K , Subcooling = 0 K

All performance data +/- 5%

Danfoss can accept no responsibility for possible errors in catalogues, brochures and other printed material. Danfoss reserves the right to alter its products without notice. This also applies to products already on order provided that such alternations can be made without subsequential changes being necessary in specifications already agreed. All trademarks in this material are property of the respective companies. Danfoss, the Danfoss logotype and Maneurop are trademarks of Danfoss A/S. All rights reserved.

**Performance data at 50 Hz, ARI rating conditions**
**R22**

Cond. temp. in °C (tc)	Evaporating temperature in °C (to)							
	-25	-20	-15	-10	-5	0	5	10

**Cooling capacity in W**

30	3 648	4 753	6 130	7 824	9 878	12 335	15 238	18 630	22 555
35	3 276	4 344	5 673	7 306	9 288	11 660	14 467	17 752	21 557
40	2 914	3 937	5 210	6 775	8 676	10 957	13 660	16 829	20 506
45	2 564	3 535	4 743	6 232	8 046	10 227	12 818	15 863	19 406
50	-	3 139	4 276	5 681	7 399	9 472	11 944	14 859	18 258
55	-	-	3 810	5 124	6 738	8 696	11 041	13 816	17 065
60	-	-	-	4 563	6 066	7 901	10 111	12 740	15 830
65	-	-	-	-	5 385	7 089	9 156	11 630	14 554

**Power input in W**

30	1 668	1 952	2 230	2 493	2 733	2 941	3 108	3 226	3 286
35	1 789	2 083	2 374	2 653	2 912	3 143	3 336	3 482	3 575
40	1 896	2 202	2 508	2 806	3 086	3 342	3 562	3 740	3 867
45	1 986	2 307	2 630	2 949	3 253	3 535	3 786	3 997	4 160
50	-	2 395	2 738	3 079	3 410	3 721	4 004	4 250	4 451
55	-	-	2 830	3 196	3 554	3 896	4 214	4 498	4 739
60	-	-	-	3 295	3 684	4 059	4 413	4 737	5 021
65	-	-	-	-	3 796	4 207	4 600	4 965	5 294

**Current consumption in A**

30	4.12	4.16	4.33	4.58	4.89	5.19	5.46	5.66	5.73
35	4.16	4.23	4.44	4.76	5.14	5.54	5.92	6.24	6.46
40	4.21	4.32	4.59	4.98	5.44	5.94	6.44	6.89	7.25
45	4.27	4.43	4.76	5.22	5.77	6.38	7.00	7.58	8.10
50	-	4.52	4.92	5.46	6.11	6.83	7.57	8.30	8.98
55	-	-	5.05	5.68	6.44	7.27	8.15	9.03	9.87
60	-	-	-	5.87	6.73	7.69	8.71	9.74	10.75
65	-	-	-	-	6.98	8.07	9.23	10.42	11.61

**Mass flow in kg/h**

30	74	96	123	155	192	237	290	351	421
35	69	91	117	149	187	232	285	346	416
40	64	85	112	143	181	226	279	340	410
45	59	80	106	137	175	219	271	332	402
50	-	74	99	130	167	211	263	324	393
55	-	-	93	123	159	203	254	314	383
60	-	-	-	115	150	193	243	303	371
65	-	-	-	-	140	182	232	290	358

**Coefficient of performance (C.O.P.)**

30	2.19	2.43	2.75	3.14	3.61	4.19	4.90	5.77	6.86
35	1.83	2.09	2.39	2.75	3.19	3.71	4.34	5.10	6.03
40	1.54	1.79	2.08	2.41	2.81	3.28	3.83	4.50	5.30
45	1.29	1.53	1.80	2.11	2.47	2.89	3.39	3.97	4.67
50	-	1.31	1.56	1.84	2.17	2.55	2.98	3.50	4.10
55	-	-	1.35	1.60	1.90	2.23	2.62	3.07	3.60
60	-	-	-	1.38	1.65	1.95	2.29	2.69	3.15
65	-	-	-	-	1.42	1.69	1.99	2.34	2.75

**Nominal performance at to = 7.2 °C, tc = 54.4 °C**

Cooling capacity	12 324	W
Power input	4 317	W
Current consumption	8.46	A
Mass flow	280	kg/h
C.O.P.	2.85	

**Pressure switch settings**

Maximum HP switch setting	27.7	bar(g)
Minimum LP switch setting	0.2	bar(g)
LP pump down setting	0.9	bar(g)

**Sound power data**

Sound power level	0	dB(A)
With acoustic hood	0	dB(A)

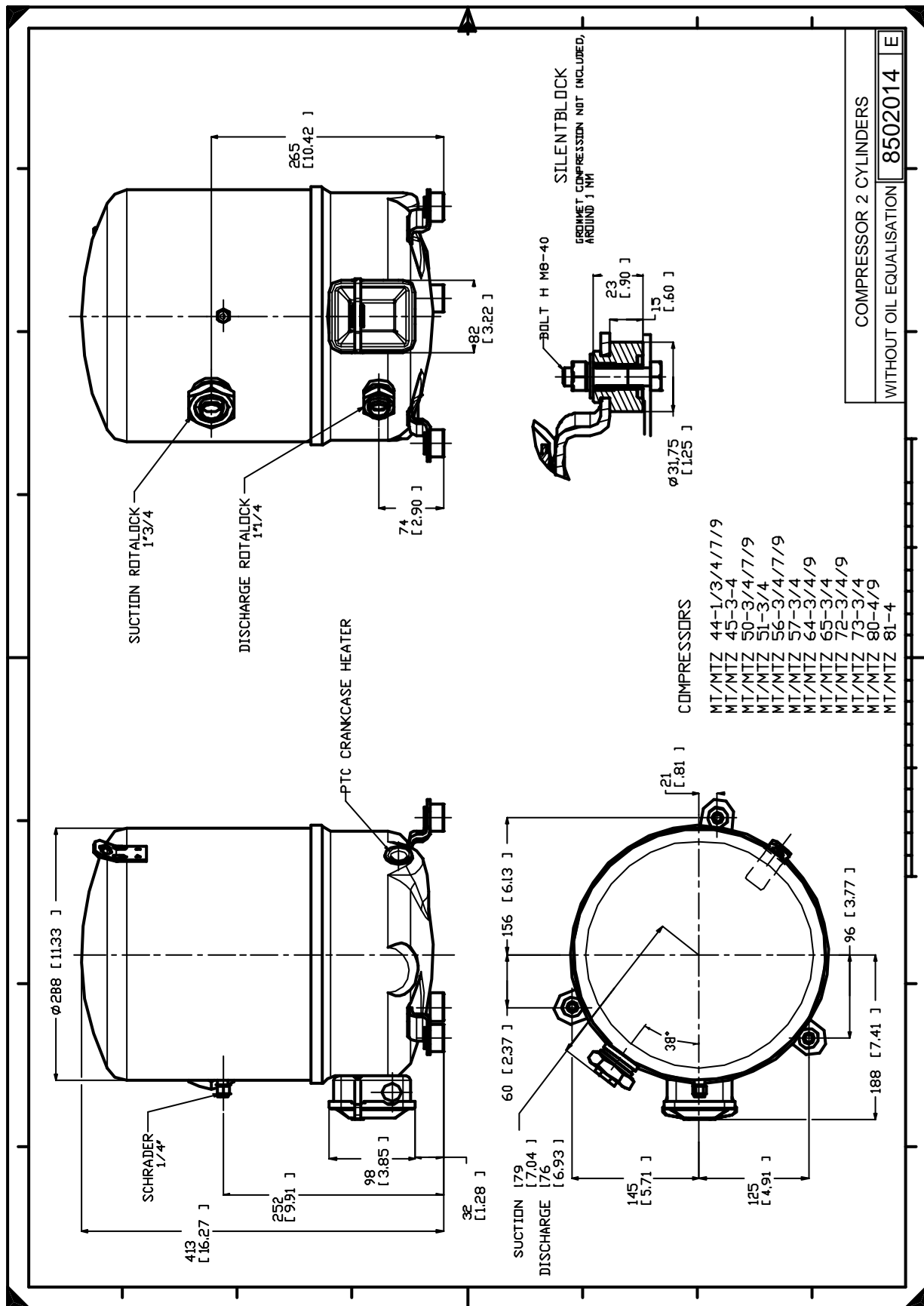
to: Evaporating temperature at dew point

tc: Condensing temperature at dew point

Rating conditions : Superheat = 11.1 K , Subcooling = 8.3 K

All performance data +/- 5%

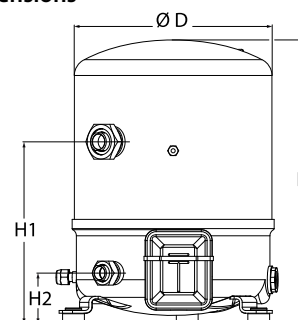
Danfoss can accept no responsibility for possible errors in catalogues, brochures and other printed material. Danfoss reserves the right to alter its products without notice. This also applies to products already on order provided that such alternations can be made without subsequential changes being necessary in specifications already agreed. All trademarks in this material are property of the respective companies. Danfoss, the Danfoss logotype and Maneurop are trademarks of Danfoss A/S. All rights reserved.



Danfoss can accept no responsibility for possible errors in catalogues, brochures and other printed material. Danfoss reserves the right to alter its products without notice. This also applies to products already on order provided that such alternations can be made without subsequential changes being necessary in specifications already agreed. All trademarks in this material are property of the respective companies. Danfoss, the Danfoss logotype and Maneurop are trademarks of Danfoss A/S. All rights reserved.

**General Characteristics**

Model number (on compressor nameplate)		<b>MT50HK4BVE</b>
Code number for Singlepack*		MT50-4VI
Code number for Industrial pack**		MT50-4VM
Drawing number		8502012g
Suction and discharge connections		Rotolock
Suction connection		1-3/4" Rotolock
Discharge connection		1-1/4" Rotolock
Suction connection with supplied sleeve		7/8" ODF
Discharge connection with supplied sleeve		3/4" ODF
Oil sight glass		Threaded
Oil equalisation connection		3/8" flare SAE
Oil drain connection		None
LP gauge port		Schrader
IPR valve		30 bar / 8 bar
Cylinders		2
Swept volume		85,64 cm <sup>3</sup> /rev
Displacement @ Nominal speed		14.9 m <sup>3</sup> /h @ 2900 rpm - 18.0 m <sup>3</sup> /h @ 3500 rpm
Net weight		35 kg
Oil charge		1,8 litre, Mineral - 160P
Maximum system test pressure Low Side / High side		25 bar(g) / 30 bar(g)
Maximum differential test pressure		30 bar
Maximum number of starts per hour		12
Refrigerant charge limit		5 kg
Approved refrigerants		R22, R417A-160PZ

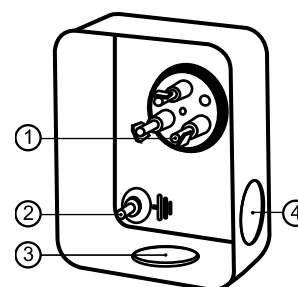
**Dimensions**


D=288 mm

H=413 mm

H1=265 mm

H2=74 mm

**Terminal box**


IP55 (with cable gland)

1: Spade connectors 1/4"

2: Earth M4-12

3: Knock-out Ø 21 mm (0.83")

4: Hole Ø 21 mm (0.83")

**Electrical Characteristics**

Nominal voltage	380-400V/3/50Hz - 460V/3/60Hz
Voltage range	340-440 V @ 50Hz - 414-506 V @ 60Hz
Winding resistance (between phases) +/- 7% at 25°C	3.8 Ω
Maximum Continuous Current (MCC)	12 A
Locked Rotor Amps (LRA)	42 A
Motor protection	Internal overload protector

**Recommended Installation torques**

Oil sight glass	50 Nm
Power connections / Earth connection	Nm / 2 Nm
Mounting bolts	15 Nm

**Parts shipped with compressor**

Mounting kit with grommets, bolts, nuts, sleeves and washers
Suction & Discharge solder sleeves, rotolock nuts and gaskets (shipped with rotolock version only)
Initial oil charge
Installation instructions

**Approvals** : CE certified, UL certified (file SA6873), CCC certified

\*Singlepack: Compressor in cardboard box

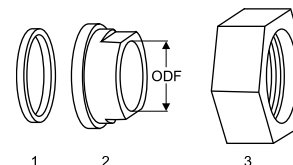
\*\*Industrial pack: 6 Unboxed compressors on pallet (order per multiples of 6)

**Rotolock accessories, suction side**

**Code no.**

Solder sleeve, P07 (1-3/4" Rotolock, 7/8" ODF)	8153013
Angle adapter, C07 (1-3/4" Rotolock, 7/8" ODF)	8168008
Rotolock valve, V07 (1-3/4" Rotolock, 7/8" ODF)	8168032
Gasket, 1-3/4"	8156132

**Gaskets, sleeves and nuts**



- 1: Gasket
- 2: Solder sleeve
- 3: Rotolock nut

**Rotolock accessories, discharge side**

**Code no.**

Solder sleeve, P04 (1-1/4" Rotolock, 3/4" ODF)	8153008
Angle adapter, C04 (1-1/4" Rotolock, 3/4" ODF)	8168006
Rotolock valve, V04 (1-1/4" Rotolock, 3/4" ODF)	8168029
Gasket, 1-1/4"	8156131

**Rotolock accessories, sets**

**Code no.**

Angle adapter set, C07 (1-3/4"~7/8"), C04 (1-1/4"~3/4")	7703013
Valve set, V07 (1-3/4"~7/8"), V04 (1-1/4"~3/4")	7703006
Gasket set, 1", 1-1/4", 1-3/4", OSG gaskets black & white	8156009

**Oil / lubricants**

**Code no.**

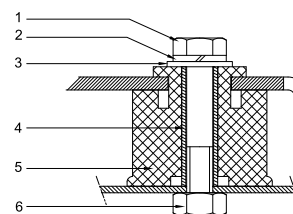
Mineral oil, 160P, 2 litre can	7754001
Mineral oil, 160P, 5 litre can	7754002

**Crankcase heaters**

**Code no.**

PTC heater 27W	120Z0459
Belt type crankcase heater, 65 W, 230 V, CE mark, UL	7773107
Belt type crankcase heater, 65 W, 400 V, CE mark, UL	7773117
Belt type crankcase heater, 65 W, 460 V, CE mark, UL	120Z0466

**Mounting kit**



- 1: Bolt (3x)
- 2: Lock washer (3x)
- 3: Flat washer (3x)
- 4: Sleeve (3x)
- 5: Grommet (3x)
- 6: Nut (3x)

**Miscellaneous accessories**

**Code no.**

Electronic soft start kit, MCI 15 C	7705006
Soft start kit with statoric resistors, prewired box, SCR01	7702003
Acoustic hood for 2 cylinder compressor	7755002
Oil equalisation nut	8153127

**Spare parts**

**Code no.**

Mounting kit for 1 and 2 cylinder compressor, including 3 grommets, 3 bolts	8156001
Oil sight glass with gaskets (black & white)	8156019
Gasket for oil sight glass (black chloroprene)	8156145
Service kit for terminal box 80 x 96 mm, including 1 cover, 1 clamp	8156134

Danfoss can accept no responsibility for possible errors in catalogues, brochures and other printed material. Danfoss reserves the right to alter its products without notice. This also applies to products already on order provided that such alternations can be made without subsequential changes being necessary in specifications already agreed. All trademarks in this material are property of the respective companies. Danfoss, the Danfoss logotype and Maneurop are trademarks of Danfoss A/S. All rights reserved.



**Performance data at 50 Hz, EN 12900 rating conditions**
**R22**

Cond. temp. in °C (tc)	Evaporating temperature in °C (to)								
	-25	-20	-15	-10	-5	0	5	10	15

**Cooling capacity in W**

30	3 436	4 479	5 782	7 386	9 331	11 660	14 414	17 635	21 363
35	3 074	4 079	5 332	6 873	8 744	10 986	13 640	16 749	20 353
40	2 724	3 684	4 879	6 350	8 140	10 288	12 836	15 826	19 299
45	2 385	3 291	4 421	5 815	7 514	9 560	11 993	14 855	18 187
50	-	2 909	3 966	5 276	6 879	8 815	11 126	13 854	17 038
55	-	-	3 514	4 731	6 230	8 049	10 231	12 815	15 844
60	-	-	-	4 183	5 569	7 262	9 305	11 738	14 601
65	-	-	-	-	4 905	6 466	8 364	10 638	13 328

**Power input in W**

30	1 668	1 952	2 230	2 493	2 733	2 941	3 108	3 226	3 286
35	1 789	2 083	2 374	2 653	2 912	3 143	3 336	3 482	3 575
40	1 896	2 202	2 508	2 806	3 086	3 342	3 562	3 740	3 867
45	1 986	2 307	2 630	2 949	3 253	3 535	3 786	3 997	4 160
50	-	2 395	2 738	3 079	3 410	3 721	4 004	4 250	4 451
55	-	-	2 830	3 196	3 554	3 896	4 214	4 498	4 739
60	-	-	-	3 295	3 684	4 059	4 413	4 737	5 021
65	-	-	-	-	3 796	4 207	4 600	4 965	5 294

**Current consumption in A**

30	4.12	4.16	4.33	4.58	4.89	5.19	5.46	5.66	5.73
35	4.16	4.23	4.44	4.76	5.14	5.54	5.92	6.24	6.46
40	4.21	4.32	4.59	4.98	5.44	5.94	6.44	6.89	7.25
45	4.27	4.43	4.76	5.22	5.77	6.38	7.00	7.58	8.10
50	-	4.52	4.92	5.46	6.11	6.83	7.57	8.30	8.98
55	-	-	5.05	5.68	6.44	7.27	8.15	9.03	9.87
60	-	-	-	5.87	6.73	7.69	8.71	9.74	10.75
65	-	-	-	-	6.98	8.07	9.23	10.42	11.61

**Mass flow in kg/h**

30	75	97	123	155	193	239	291	353	423
35	69	91	118	150	188	233	286	348	418
40	64	86	112	144	182	227	280	341	412
45	59	80	106	138	175	220	273	334	405
50	-	74	100	131	168	212	265	326	396
55	-	-	93	123	160	204	255	316	385
60	-	-	-	115	151	194	245	304	373
65	-	-	-	-	141	183	233	292	360

**Coefficient of performance (C.O.P.)**

30	2.06	2.29	2.59	2.96	3.41	3.97	4.64	5.47	6.50
35	1.72	1.96	2.25	2.59	3.00	3.50	4.09	4.81	5.69
40	1.44	1.67	1.95	2.26	2.64	3.08	3.60	4.23	4.99
45	1.20	1.43	1.68	1.97	2.31	2.70	3.17	3.72	4.37
50	-	1.21	1.45	1.71	2.02	2.37	2.78	3.26	3.83
55	-	-	1.24	1.48	1.75	2.07	2.43	2.85	3.34
60	-	-	-	1.27	1.51	1.79	2.11	2.48	2.91
65	-	-	-	-	1.29	1.54	1.82	2.14	2.52

**Nominal performance at to = 5 °C, tc = 50 °C**

Cooling capacity	11 126	W
Power input	4 004	W
Current consumption	7.57	A
Mass flow	265	kg/h
C.O.P.	2.78	

**Pressure switch settings**

Maximum HP switch setting	27.7	bar(g)
Minimum LP switch setting	0.2	bar(g)
LP pump down setting	0.9	bar(g)

**Sound power data**

Sound power level	0	dB(A)
With acoustic hood	0	dB(A)

to: Evaporating temperature at dew point

tc: Condensing temperature at dew point

Rating conditions : Superheat = 10 K , Subcooling = 0 K

All performance data +/- 5%

Danfoss can accept no responsibility for possible errors in catalogues, brochures and other printed material. Danfoss reserves the right to alter its products without notice. This also applies to products already on order provided that such alternations can be made without subsequential changes being necessary in specifications already agreed. All trademarks in this material are property of the respective companies. Danfoss, the Danfoss logotype and Maneurop are trademarks of Danfoss A/S. All rights reserved.

**Performance data at 50 Hz, ARI rating conditions**
**R22**

Cond. temp. in °C (tc)	Evaporating temperature in °C (to)							
	-25	-20	-15	-10	-5	0	5	10

**Cooling capacity in W**

30	3 648	4 753	6 130	7 824	9 878	12 335	15 238	18 630	22 555
35	3 276	4 344	5 673	7 306	9 288	11 660	14 467	17 752	21 557
40	2 914	3 937	5 210	6 775	8 676	10 957	13 660	16 829	20 506
45	2 564	3 535	4 743	6 232	8 046	10 227	12 818	15 863	19 406
50	-	3 139	4 276	5 681	7 399	9 472	11 944	14 859	18 258
55	-	-	3 810	5 124	6 738	8 696	11 041	13 816	17 065
60	-	-	-	4 563	6 066	7 901	10 111	12 740	15 830
65	-	-	-	-	5 385	7 089	9 156	11 630	14 554

**Power input in W**

30	1 668	1 952	2 230	2 493	2 733	2 941	3 108	3 226	3 286
35	1 789	2 083	2 374	2 653	2 912	3 143	3 336	3 482	3 575
40	1 896	2 202	2 508	2 806	3 086	3 342	3 562	3 740	3 867
45	1 986	2 307	2 630	2 949	3 253	3 535	3 786	3 997	4 160
50	-	2 395	2 738	3 079	3 410	3 721	4 004	4 250	4 451
55	-	-	2 830	3 196	3 554	3 896	4 214	4 498	4 739
60	-	-	-	3 295	3 684	4 059	4 413	4 737	5 021
65	-	-	-	-	3 796	4 207	4 600	4 965	5 294

**Current consumption in A**

30	4.12	4.16	4.33	4.58	4.89	5.19	5.46	5.66	5.73
35	4.16	4.23	4.44	4.76	5.14	5.54	5.92	6.24	6.46
40	4.21	4.32	4.59	4.98	5.44	5.94	6.44	6.89	7.25
45	4.27	4.43	4.76	5.22	5.77	6.38	7.00	7.58	8.10
50	-	4.52	4.92	5.46	6.11	6.83	7.57	8.30	8.98
55	-	-	5.05	5.68	6.44	7.27	8.15	9.03	9.87
60	-	-	-	5.87	6.73	7.69	8.71	9.74	10.75
65	-	-	-	-	6.98	8.07	9.23	10.42	11.61

**Mass flow in kg/h**

30	74	96	123	155	192	237	290	351	421
35	69	91	117	149	187	232	285	346	416
40	64	85	112	143	181	226	279	340	410
45	59	80	106	137	175	219	271	332	402
50	-	74	99	130	167	211	263	324	393
55	-	-	93	123	159	203	254	314	383
60	-	-	-	115	150	193	243	303	371
65	-	-	-	-	140	182	232	290	358

**Coefficient of performance (C.O.P.)**

30	2.19	2.43	2.75	3.14	3.61	4.19	4.90	5.77	6.86
35	1.83	2.09	2.39	2.75	3.19	3.71	4.34	5.10	6.03
40	1.54	1.79	2.08	2.41	2.81	3.28	3.83	4.50	5.30
45	1.29	1.53	1.80	2.11	2.47	2.89	3.39	3.97	4.67
50	-	1.31	1.56	1.84	2.17	2.55	2.98	3.50	4.10
55	-	-	1.35	1.60	1.90	2.23	2.62	3.07	3.60
60	-	-	-	1.38	1.65	1.95	2.29	2.69	3.15
65	-	-	-	-	1.42	1.69	1.99	2.34	2.75

**Nominal performance at to = 7.2 °C, tc = 54.4 °C**

Cooling capacity	12 324	W
Power input	4 317	W
Current consumption	8.46	A
Mass flow	280	kg/h
C.O.P.	2.85	

**Pressure switch settings**

Maximum HP switch setting	27.7	bar(g)
Minimum LP switch setting	0.2	bar(g)
LP pump down setting	0.9	bar(g)

**Sound power data**

Sound power level	0	dB(A)
With acoustic hood	0	dB(A)

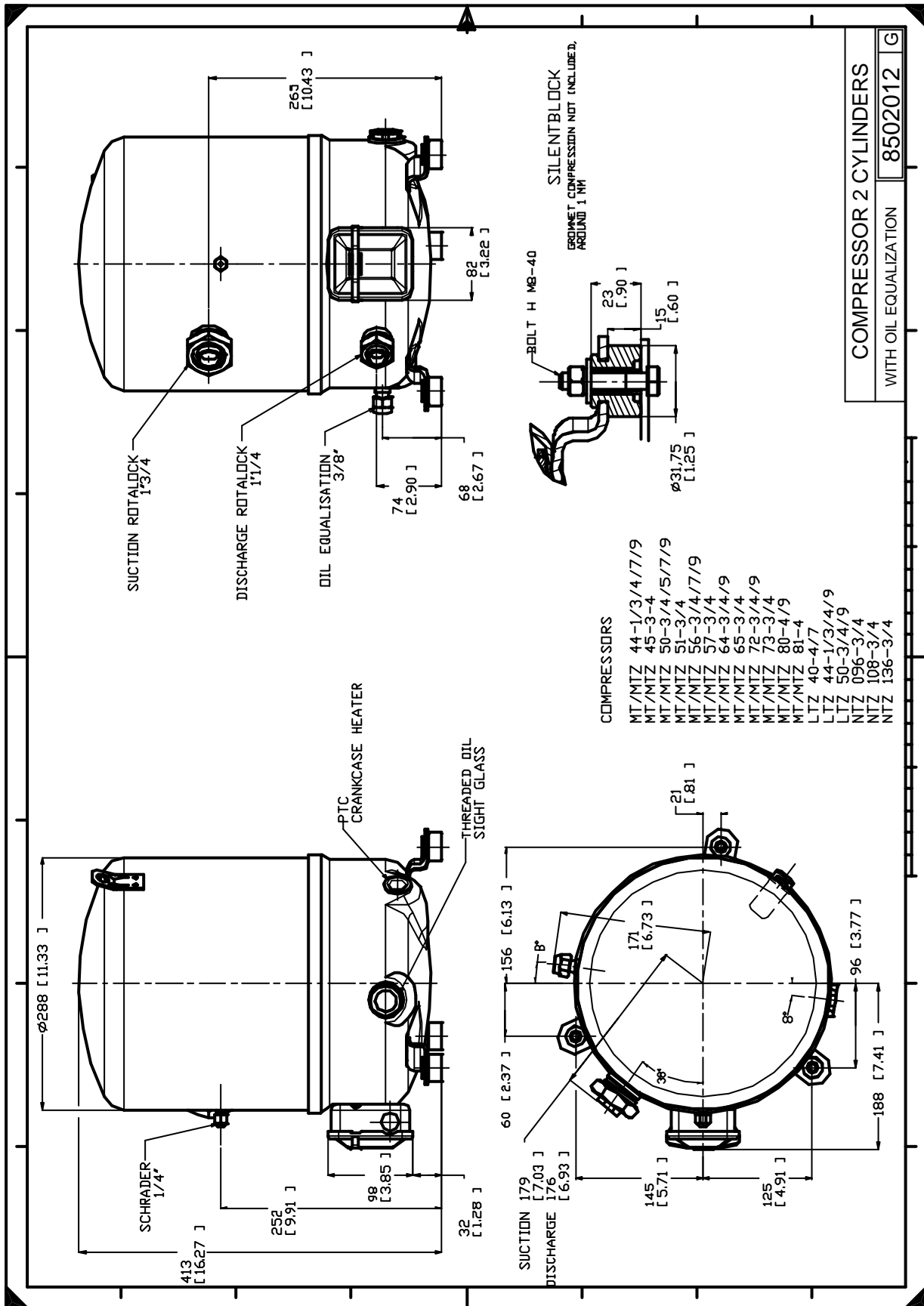
to: Evaporating temperature at dew point

tc: Condensing temperature at dew point

Rating conditions : Superheat = 11.1 K , Subcooling = 8.3 K

All performance data +/- 5%

Danfoss can accept no responsibility for possible errors in catalogues, brochures and other printed material. Danfoss reserves the right to alter its products without notice. This also applies to products already on order provided that such alternations can be made without subsequential changes being necessary in specifications already agreed. All trademarks in this material are property of the respective companies. Danfoss, the Danfoss logotype and Maneurop are trademarks of Danfoss A/S. All rights reserved.



Danfoss can accept no responsibility for possible errors in catalogues, brochures and other printed material. Danfoss reserves the right to alter its products without notice. This also applies to products already on order provided that such alternations can be made without consequential changes being necessary in specifications already agreed. All trademarks in this material are property of the respective companies. Danfoss, the Danfoss logotype and Maneurop are trademarks of Danfoss A/S. All rights reserved.