



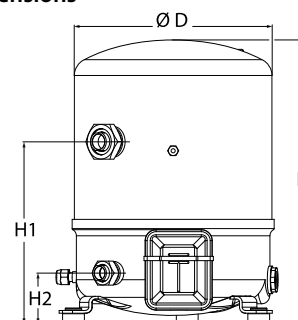
Datasheets

Maneurop[®] Reciprocating compressors MT / MTZ / MPZ / NTZ



General Characteristics

Model number (on compressor nameplate)		MT64HM4C
Code number for Industrial pack**		MT64-4M
Drawing number		8502014e
Suction and discharge connections		Rotolock
Suction connection		1-3/4" Rotolock
Discharge connection		1-1/4" Rotolock
Suction connection with supplied sleeve		7/8" ODF
Discharge connection with supplied sleeve		3/4" ODF
Oil sight glass		None
Oil equalisation connection		None
Oil drain connection		None
LP gauge port		Schrader
IPR valve		30 bar / 8 bar
Cylinders		2
Swept volume		107,71 cm ³ /rev
Displacement @ Nominal speed		18.7 m ³ /h @ 2900 rpm - 22.6 m ³ /h @ 3500 rpm
Net weight		37 kg
Oil charge		1,8 litre, Mineral - 160P
Maximum system test pressure Low Side / High side		25 bar(g) / 30 bar(g)
Maximum differential test pressure		30 bar
Maximum number of starts per hour		12
Refrigerant charge limit		5 kg
Approved refrigerants		R22, R417A-160PZ

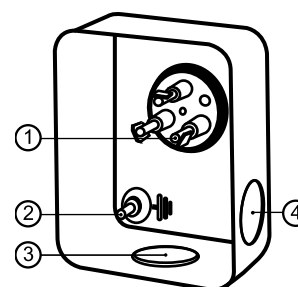
Dimensions


D=288 mm

H=413 mm

H1=265 mm

H2=74 mm

Terminal box


IP55 (with cable gland)

1: Spade connectors 1/4"

2: Earth M4-12

3: Knock-out Ø 21 mm (0.83")

4: Hole Ø 21 mm (0.83")

Electrical Characteristics

Nominal voltage	380-400V/3/50Hz - 460V/3/60Hz
Voltage range	340-440 V @ 50Hz - 414-506 V @ 60Hz
Winding resistance (between phases) +/- 7% at 25°C	2,41 Ω
Maximum Continuous Current (MCC)	15 A
Locked Rotor Amps (LRA)	67 A
Motor protection	Internal overload protector

Recommended Installation torques

Oil sight glass	0 Nm
Power connections / Earth connection	Nm / 2 Nm
Mounting bolts	15 Nm

Parts shipped with compressor

Mounting kit with grommets, bolts, nuts, sleeves and washers
Initial oil charge
Installation instructions

Approvals : CE certified, UL certified (file SA6873), -

*Singlepack: Compressor in cardboard box

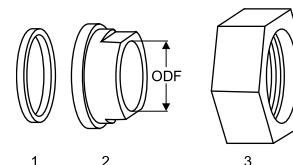
**Industrial pack: 6 Unboxed compressors on pallet (order per multiples of 6)

Rotolock accessories, suction side

Code no.

Solder sleeve, P07 (1-3/4" Rotolock, 7/8" ODF)	8153013
Angle adapter, C07 (1-3/4" Rotolock, 7/8" ODF)	8168008
Rotolock valve, V07 (1-3/4" Rotolock, 7/8" ODF)	8168032
Gasket, 1-3/4"	8156132

Gaskets, sleeves and nuts



- 1: Gasket
- 2: Solder sleeve
- 3: Rotolock nut

Rotolock accessories, discharge side

Code no.

Solder sleeve, P04 (1-1/4" Rotolock, 3/4" ODF)	8153008
Angle adapter, C04 (1-1/4" Rotolock, 3/4" ODF)	8168006
Rotolock valve, V04 (1-1/4" Rotolock, 3/4" ODF)	8168029
Gasket, 1-1/4"	8156131

Rotolock accessories, sets

Code no.

Angle adapter set, C07 (1-3/4"~7/8"), C04 (1-1/4"~3/4")	7703013
Valve set, V07 (1-3/4"~7/8"), V04 (1-1/4"~3/4")	7703006
Gasket set, 1", 1-1/4", 1-3/4", OSG gaskets black & white	8156009

Oil / lubricants

Code no.

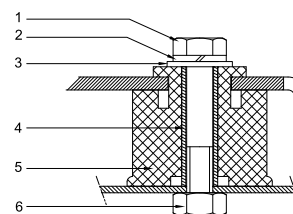
Mineral oil, 160P, 2 litre can	7754001
Mineral oil, 160P, 5 litre can	7754002

Crankcase heaters

Code no.

PTC heater 27W	120Z0459
Belt type crankcase heater, 65 W, 230 V, CE mark, UL	7773107
Belt type crankcase heater, 65 W, 400 V, CE mark, UL	7773117
Belt type crankcase heater, 65 W, 460 V, CE mark, UL	120Z0466

Mounting kit



- 1: Bolt (3x)
- 2: Lock washer (3x)
- 3: Flat washer (3x)
- 4: Sleeve (3x)
- 5: Grommet (3x)
- 6: Nut (3x)

Miscellaneous accessories

Code no.

Electronic soft start kit, MCI 15 C	7705006
Soft start kit with statoric resistors, prewired box, SCR01	7702003
Acoustic hood for 2 cylinder compressor	7755002

Spare parts

Code no.

Mounting kit for 1 and 2 cylinder compressor, including 3 grommets, 3 bolts	8156001
Service kit for terminal box 80 x 96 mm, including 1 cover, 1 clamp	8156134

Danfoss can accept no responsibility for possible errors in catalogues, brochures and other printed material. Danfoss reserves the right to alter its products without notice. This also applies to products already on order provided that such alternations can be made without subsequential changes being necessary in specifications already agreed. All trademarks in this material are property of the respective companies. Danfoss, the Danfoss logotype and Maneurop are trademarks of Danfoss A/S. All rights reserved.

Performance data at 50 Hz, EN 12900 rating conditions
R22

Cond. temp. in °C (tc)	Evaporating temperature in °C (to)							
	-25	-20	-15	-10	-5	0	5	10

Cooling capacity in W

30	4 146	5 664	7 487	9 653	12 202	15 171	18 602	22 531	27 000
35	3 671	5 134	6 885	8 963	11 406	14 254	17 544	21 317	25 612
40	3 245	4 643	6 312	8 292	10 620	13 335	16 477	20 084	24 195
45	2 873	4 195	5 771	7 641	9 842	12 414	15 394	18 822	22 737
50	-	3 802	5 276	7 027	9 092	11 510	14 320	17 561	21 270
55	-	-	4 831	6 452	8 370	10 624	13 252	16 294	19 786
60	-	-	-	5 921	7 681	9 759	12 195	15 025	18 288
65	-	-	-	-	7 041	8 935	11 168	13 778	16 802

Power input in W

30	2 181	2 563	2 924	3 248	3 522	3 730	3 858	3 890	3 812
35	2 340	2 741	3 125	3 480	3 789	4 038	4 213	4 298	4 278
40	2 471	2 894	3 306	3 695	4 043	4 338	4 563	4 705	4 748
45	2 570	3 019	3 464	3 889	4 281	4 625	4 905	5 108	5 217
50	-	3 112	3 592	4 059	4 499	4 896	5 235	5 502	5 682
55	-	-	3 688	4 201	4 692	5 146	5 548	5 883	6 138
60	-	-	-	4 310	4 856	5 371	5 840	6 248	6 581
65	-	-	-	-	4 987	5 567	6 106	6 591	7 006

Current consumption in A

30	5.29	5.62	5.97	6.32	6.63	6.88	7.03	7.07	6.94
35	5.44	5.79	6.18	6.57	6.94	7.25	7.48	7.60	7.57
40	5.56	5.95	6.37	6.82	7.25	7.63	7.94	8.15	8.22
45	5.65	6.08	6.55	7.06	7.56	8.02	8.42	8.72	8.90
50	-	6.17	6.71	7.28	7.85	8.40	8.89	9.30	9.59
55	-	-	6.83	7.47	8.12	8.76	9.36	9.88	10.29
60	-	-	-	7.62	8.36	9.10	9.81	10.44	10.99
65	-	-	-	-	8.57	9.41	10.23	10.99	11.67

Mass flow in kg/h

30	90	122	159	202	252	309	375	449	534
35	83	115	152	195	245	303	368	442	526
40	77	108	145	188	238	295	360	434	517
45	71	102	139	181	230	286	350	424	506
50	-	97	133	174	222	277	341	413	494
55	-	-	128	168	215	269	331	401	481
60	-	-	-	163	208	260	321	389	468
65	-	-	-	-	202	253	311	378	454

Coefficient of performance (C.O.P.)

30	1.90	2.21	2.56	2.97	3.46	4.07	4.82	5.79	7.08
35	1.57	1.87	2.20	2.58	3.01	3.53	4.16	4.96	5.99
40	1.31	1.60	1.91	2.24	2.63	3.07	3.61	4.27	5.10
45	1.12	1.39	1.67	1.96	2.30	2.68	3.14	3.69	4.36
50	-	1.22	1.47	1.73	2.02	2.35	2.74	3.19	3.74
55	-	-	1.31	1.54	1.78	2.06	2.39	2.77	3.22
60	-	-	-	1.37	1.58	1.82	2.09	2.40	2.78
65	-	-	-	-	1.41	1.61	1.83	2.09	2.40

Nominal performance at to = 5 °C, tc = 50 °C

Cooling capacity	14 320	W
Power input	5 235	W
Current consumption	8.89	A
Mass flow	341	kg/h
C.O.P.	2.74	

Pressure switch settings

Maximum HP switch setting	27.7	bar(g)
Minimum LP switch setting	0.2	bar(g)
LP pump down setting	0.9	bar(g)

Sound power data

Sound power level	0	dB(A)
With acoustic hood	0	dB(A)

to: Evaporating temperature at dew point

tc: Condensing temperature at dew point

Rating conditions : Superheat = 10 K , Subcooling = 0 K

All performance data +/- 5%

Danfoss can accept no responsibility for possible errors in catalogues, brochures and other printed material. Danfoss reserves the right to alter its products without notice. This also applies to products already on order provided that such alternations can be made without subsequential changes being necessary in specifications already agreed. All trademarks in this material are property of the respective companies. Danfoss, the Danfoss logotype and Maneurop are trademarks of Danfoss A/S. All rights reserved.

Performance data at 50 Hz, ARI rating conditions

R22

Cond. temp. in °C (tc)	Evaporating temperature in °C (to)								
	-25	-20	-15	-10	-5	0	5	10	15

Cooling capacity in W

30	4 403	6 010	7 937	10 226	12 917	16 049	19 664	23 803	28 505
35	3 912	5 467	7 325	9 528	12 116	15 129	18 608	22 594	27 127
40	3 471	4 962	6 740	8 846	11 320	14 203	17 535	21 356	25 709
45	3 089	4 505	6 192	8 189	10 538	13 280	16 453	20 100	24 261
50	-	4 104	5 688	7 566	9 780	12 368	15 373	18 834	22 792
55	-	-	5 238	6 987	9 053	11 478	14 303	17 567	21 311
60	-	-	-	6 458	8 367	10 618	13 251	16 307	19 827
65	-	-	-	-	7 731	9 795	12 226	15 063	18 348

Power input in W

30	2 181	2 563	2 924	3 248	3 522	3 730	3 858	3 890	3 812
35	2 340	2 741	3 125	3 480	3 789	4 038	4 213	4 298	4 278
40	2 471	2 894	3 306	3 695	4 043	4 338	4 563	4 705	4 748
45	2 570	3 019	3 464	3 889	4 281	4 625	4 905	5 108	5 217
50	-	3 112	3 592	4 059	4 499	4 896	5 235	5 502	5 682
55	-	-	3 688	4 201	4 692	5 146	5 548	5 883	6 138
60	-	-	-	4 310	4 856	5 371	5 840	6 248	6 581
65	-	-	-	-	4 987	5 567	6 106	6 591	7 006

Current consumption in A

30	5.29	5.62	5.97	6.32	6.63	6.88	7.03	7.07	6.94
35	5.44	5.79	6.18	6.57	6.94	7.25	7.48	7.60	7.57
40	5.56	5.95	6.37	6.82	7.25	7.63	7.94	8.15	8.22
45	5.65	6.08	6.55	7.06	7.56	8.02	8.42	8.72	8.90
50	-	6.17	6.71	7.28	7.85	8.40	8.89	9.30	9.59
55	-	-	6.83	7.47	8.12	8.76	9.36	9.88	10.29
60	-	-	-	7.62	8.36	9.10	9.81	10.44	10.99
65	-	-	-	-	8.57	9.41	10.23	10.99	11.67

Mass flow in kg/h

30	89	121	158	201	251	308	373	447	530
35	83	114	151	194	244	301	366	440	523
40	76	108	145	187	237	293	358	431	514
45	71	102	138	180	229	285	349	421	503
50	-	97	132	173	221	276	339	410	491
55	-	-	127	167	214	267	329	399	478
60	-	-	-	162	207	259	319	387	465
65	-	-	-	-	201	251	309	376	451

Coefficient of performance (C.O.P.)

30	2.02	2.34	2.71	3.15	3.67	4.30	5.10	6.12	7.48
35	1.67	1.99	2.34	2.74	3.20	3.75	4.42	5.26	6.34
40	1.40	1.71	2.04	2.39	2.80	3.27	3.84	4.54	5.41
45	1.20	1.49	1.79	2.11	2.46	2.87	3.35	3.94	4.65
50	-	1.32	1.58	1.86	2.17	2.53	2.94	3.42	4.01
55	-	-	1.42	1.66	1.93	2.23	2.58	2.99	3.47
60	-	-	-	1.50	1.72	1.98	2.27	2.61	3.01
65	-	-	-	-	1.55	1.76	2.00	2.29	2.62

Nominal performance at to = 7.2 °C, tc = 54.4 °C

Cooling capacity	15 820	W
Power input	5 664	W
Current consumption	9.54	A
Mass flow	360	kg/h
C.O.P.	2.79	

Pressure switch settings

Maximum HP switch setting	27.7	bar(g)
Minimum LP switch setting	0.2	bar(g)
LP pump down setting	0.9	bar(g)

Sound power data

Sound power level	0	dB(A)
With acoustic hood	0	dB(A)

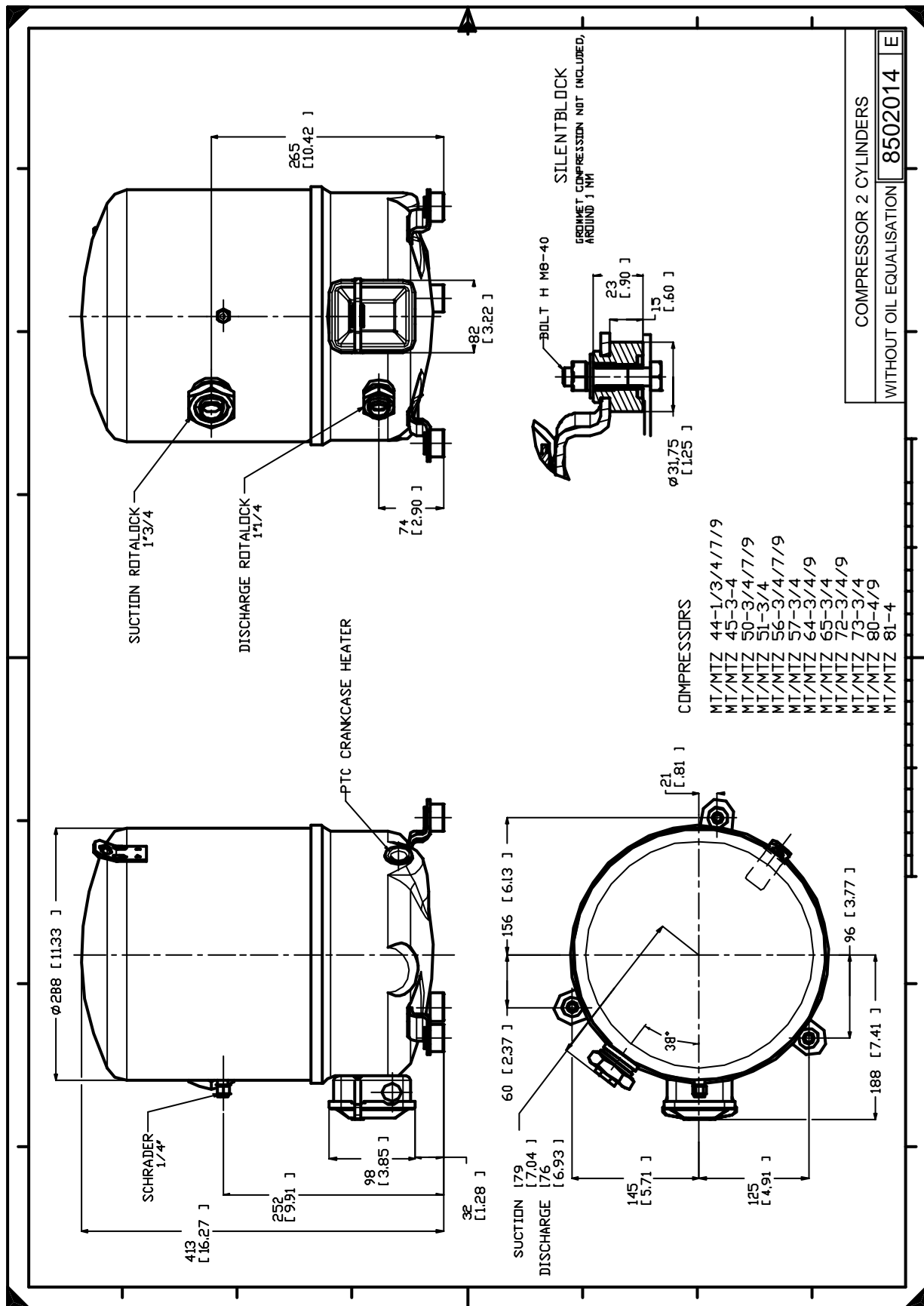
to: Evaporating temperature at dew point

tc: Condensing temperature at dew point

Rating conditions : Superheat = 11.1 K , Subcooling = 8.3 K

All performance data +/- 5%

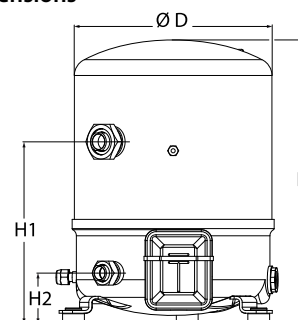
Danfoss can accept no responsibility for possible errors in catalogues, brochures and other printed material. Danfoss reserves the right to alter its products without notice. This also applies to products already on order provided that such alternations can be made without subsequential changes being necessary in specifications already agreed. All trademarks in this material are property of the respective companies. Danfoss, the Danfoss logotype and Maneurop are trademarks of Danfoss A/S. All rights reserved.



Danfoss can accept no responsibility for possible errors in catalogues, brochures and other printed material. Danfoss reserves the right to alter its products without notice. This also applies to products already on order provided that such alternations can be made without subsequential changes being necessary in specifications already agreed. All trademarks in this material are property of the respective companies. Danfoss, the Danfoss logotype and Maneurop are trademarks of Danfoss A/S. All rights reserved.

General Characteristics

Model number (on compressor nameplate)		MT64HM4CVE
Code number for Singlepack*		MT64-4VI
Code number for Industrial pack**		MT64-4VM
Drawing number		8502012g
Suction and discharge connections		Rotolock
Suction connection		1-3/4" Rotolock
Discharge connection		1-1/4" Rotolock
Suction connection with supplied sleeve		7/8" ODF
Discharge connection with supplied sleeve		3/4" ODF
Oil sight glass		Threaded
Oil equalisation connection		3/8" flare SAE
Oil drain connection		None
LP gauge port		Schrader
IPR valve		30 bar / 8 bar
Cylinders		2
Swept volume		107,71 cm ³ /rev
Displacement @ Nominal speed		18.7 m ³ /h @ 2900 rpm - 22.6 m ³ /h @ 3500 rpm
Net weight		37 kg
Oil charge		1,8 litre, Mineral - 160P
Maximum system test pressure Low Side / High side		25 bar(g) / 30 bar(g)
Maximum differential test pressure		30 bar
Maximum number of starts per hour		12
Refrigerant charge limit		5 kg
Approved refrigerants		R22, R417A-160PZ

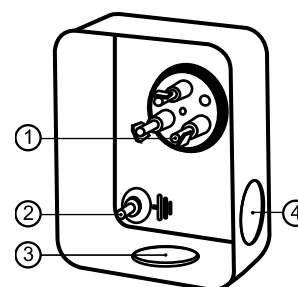
Dimensions


D=288 mm

H=413 mm

H1=265 mm

H2=74 mm

Terminal box


IP55 (with cable gland)

- 1: Spade connectors 1/4"
- 2: Earth M4-12
- 3: Knock-out Ø 21 mm (0.83")
- 4: Hole Ø 21 mm (0.83")

Electrical Characteristics

Nominal voltage	380-400V/3/50Hz - 460V/3/60Hz
Voltage range	340-440 V @ 50Hz - 414-506 V @ 60Hz
Winding resistance (between phases) +/- 7% at 25°C	2.41 Ω
Maximum Continuous Current (MCC)	15 A
Locked Rotor Amps (LRA)	67 A
Motor protection	Internal overload protector

Recommended Installation torques

Oil sight glass	50 Nm
Power connections / Earth connection	Nm / 2 Nm
Mounting bolts	15 Nm

Parts shipped with compressor

Mounting kit with grommets, bolts, nuts, sleeves and washers
Suction & Discharge solder sleeves, rotolock nuts and gaskets (shipped with rotolock version only)
Initial oil charge
Installation instructions

Approvals : CE certified, UL certified (file SA6873), CCC certified

*Singlepack: Compressor in cardboard box

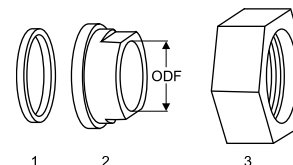
**Industrial pack: 6 Unboxed compressors on pallet (order per multiples of 6)

Rotolock accessories, suction side

Code no.

Solder sleeve, P07 (1-3/4" Rotolock, 7/8" ODF)	8153013
Angle adapter, C07 (1-3/4" Rotolock, 7/8" ODF)	8168008
Rotolock valve, V07 (1-3/4" Rotolock, 7/8" ODF)	8168032
Gasket, 1-3/4"	8156132

Gaskets, sleeves and nuts



- 1: Gasket
- 2: Solder sleeve
- 3: Rotolock nut

Rotolock accessories, discharge side

Code no.

Solder sleeve, P04 (1-1/4" Rotolock, 3/4" ODF)	8153008
Angle adapter, C04 (1-1/4" Rotolock, 3/4" ODF)	8168006
Rotolock valve, V04 (1-1/4" Rotolock, 3/4" ODF)	8168029
Gasket, 1-1/4"	8156131

Rotolock accessories, sets

Code no.

Angle adapter set, C07 (1-3/4"~7/8"), C04 (1-1/4"~3/4")	7703013
Valve set, V07 (1-3/4"~7/8"), V04 (1-1/4"~3/4")	7703006
Gasket set, 1", 1-1/4", 1-3/4", OSG gaskets black & white	8156009

Oil / lubricants

Code no.

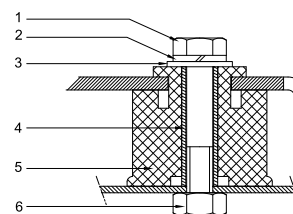
Mineral oil, 160P, 2 litre can	7754001
Mineral oil, 160P, 5 litre can	7754002

Crankcase heaters

Code no.

PTC heater 27W	120Z0459
Belt type crankcase heater, 65 W, 230 V, CE mark, UL	7773107
Belt type crankcase heater, 65 W, 400 V, CE mark, UL	7773117
Belt type crankcase heater, 65 W, 460 V, CE mark, UL	120Z0466

Mounting kit



- 1: Bolt (3x)
- 2: Lock washer (3x)
- 3: Flat washer (3x)
- 4: Sleeve (3x)
- 5: Grommet (3x)
- 6: Nut (3x)

Miscellaneous accessories

Code no.

Electronic soft start kit, MCI 15 C	7705006
Soft start kit with statoric resistors, prewired box, SCR01	7702003
Acoustic hood for 2 cylinder compressor	7755002
Oil equalisation nut	8153127

Spare parts

Code no.

Mounting kit for 1 and 2 cylinder compressor, including 3 grommets, 3 bolts	8156001
Oil sight glass with gaskets (black & white)	8156019
Gasket for oil sight glass (black chloroprene)	8156145
Service kit for terminal box 80 x 96 mm, including 1 cover, 1 clamp	8156134

Danfoss can accept no responsibility for possible errors in catalogues, brochures and other printed material. Danfoss reserves the right to alter its products without notice. This also applies to products already on order provided that such alternations can be made without subsequential changes being necessary in specifications already agreed. All trademarks in this material are property of the respective companies. Danfoss, the Danfoss logotype and Maneurop are trademarks of Danfoss A/S. All rights reserved.

Performance data at 50 Hz, EN 12900 rating conditions
R22

Cond. temp. in °C (tc)	Evaporating temperature in °C (to)							
	-25	-20	-15	-10	-5	0	5	10

Cooling capacity in W

30	4 146	5 664	7 487	9 653	12 202	15 171	18 602	22 531	27 000
35	3 671	5 134	6 885	8 963	11 406	14 254	17 544	21 317	25 612
40	3 245	4 643	6 312	8 292	10 620	13 335	16 477	20 084	24 195
45	2 873	4 195	5 771	7 641	9 842	12 414	15 394	18 822	22 737
50	-	3 802	5 276	7 027	9 092	11 510	14 320	17 561	21 270
55	-	-	4 831	6 452	8 370	10 624	13 252	16 294	19 786
60	-	-	-	5 921	7 681	9 759	12 195	15 025	18 288
65	-	-	-	-	7 041	8 935	11 168	13 778	16 802

Power input in W

30	2 181	2 563	2 924	3 248	3 522	3 730	3 858	3 890	3 812
35	2 340	2 741	3 125	3 480	3 789	4 038	4 213	4 298	4 278
40	2 471	2 894	3 306	3 695	4 043	4 338	4 563	4 705	4 748
45	2 570	3 019	3 464	3 889	4 281	4 625	4 905	5 108	5 217
50	-	3 112	3 592	4 059	4 499	4 896	5 235	5 502	5 682
55	-	-	3 688	4 201	4 692	5 146	5 548	5 883	6 138
60	-	-	-	4 310	4 856	5 371	5 840	6 248	6 581
65	-	-	-	-	4 987	5 567	6 106	6 591	7 006

Current consumption in A

30	5.29	5.62	5.97	6.32	6.63	6.88	7.03	7.07	6.94
35	5.44	5.79	6.18	6.57	6.94	7.25	7.48	7.60	7.57
40	5.56	5.95	6.37	6.82	7.25	7.63	7.94	8.15	8.22
45	5.65	6.08	6.55	7.06	7.56	8.02	8.42	8.72	8.90
50	-	6.17	6.71	7.28	7.85	8.40	8.89	9.30	9.59
55	-	-	6.83	7.47	8.12	8.76	9.36	9.88	10.29
60	-	-	-	7.62	8.36	9.10	9.81	10.44	10.99
65	-	-	-	-	8.57	9.41	10.23	10.99	11.67

Mass flow in kg/h

30	90	122	159	202	252	309	375	449	534
35	83	115	152	195	245	303	368	442	526
40	77	108	145	188	238	295	360	434	517
45	71	102	139	181	230	286	350	424	506
50	-	97	133	174	222	277	341	413	494
55	-	-	128	168	215	269	331	401	481
60	-	-	-	163	208	260	321	389	468
65	-	-	-	-	202	253	311	378	454

Coefficient of performance (C.O.P.)

30	1.90	2.21	2.56	2.97	3.46	4.07	4.82	5.79	7.08
35	1.57	1.87	2.20	2.58	3.01	3.53	4.16	4.96	5.99
40	1.31	1.60	1.91	2.24	2.63	3.07	3.61	4.27	5.10
45	1.12	1.39	1.67	1.96	2.30	2.68	3.14	3.69	4.36
50	-	1.22	1.47	1.73	2.02	2.35	2.74	3.19	3.74
55	-	-	1.31	1.54	1.78	2.06	2.39	2.77	3.22
60	-	-	-	1.37	1.58	1.82	2.09	2.40	2.78
65	-	-	-	-	1.41	1.61	1.83	2.09	2.40

Nominal performance at to = 5 °C, tc = 50 °C

Cooling capacity	14 320	W
Power input	5 235	W
Current consumption	8.89	A
Mass flow	341	kg/h
C.O.P.	2.74	

Pressure switch settings

Maximum HP switch setting	27.7	bar(g)
Minimum LP switch setting	0.2	bar(g)
LP pump down setting	0.9	bar(g)

Sound power data

Sound power level	0	dB(A)
With acoustic hood	0	dB(A)

to: Evaporating temperature at dew point

tc: Condensing temperature at dew point

Rating conditions : Superheat = 10 K , Subcooling = 0 K

All performance data +/- 5%

Danfoss can accept no responsibility for possible errors in catalogues, brochures and other printed material. Danfoss reserves the right to alter its products without notice. This also applies to products already on order provided that such alternations can be made without subsequential changes being necessary in specifications already agreed. All trademarks in this material are property of the respective companies. Danfoss, the Danfoss logotype and Maneurop are trademarks of Danfoss A/S. All rights reserved.

Performance data at 50 Hz, ARI rating conditions

R22

Cond. temp. in °C (tc)	Evaporating temperature in °C (to)							
	-25	-20	-15	-10	-5	0	5	10

Cooling capacity in W

30	4 403	6 010	7 937	10 226	12 917	16 049	19 664	23 803	28 505
35	3 912	5 467	7 325	9 528	12 116	15 129	18 608	22 594	27 127
40	3 471	4 962	6 740	8 846	11 320	14 203	17 535	21 356	25 709
45	3 089	4 505	6 192	8 189	10 538	13 280	16 453	20 100	24 261
50	-	4 104	5 688	7 566	9 780	12 368	15 373	18 834	22 792
55	-	-	5 238	6 987	9 053	11 478	14 303	17 567	21 311
60	-	-	-	6 458	8 367	10 618	13 251	16 307	19 827
65	-	-	-	-	7 731	9 795	12 226	15 063	18 348

Power input in W

30	2 181	2 563	2 924	3 248	3 522	3 730	3 858	3 890	3 812
35	2 340	2 741	3 125	3 480	3 789	4 038	4 213	4 298	4 278
40	2 471	2 894	3 306	3 695	4 043	4 338	4 563	4 705	4 748
45	2 570	3 019	3 464	3 889	4 281	4 625	4 905	5 108	5 217
50	-	3 112	3 592	4 059	4 499	4 896	5 235	5 502	5 682
55	-	-	3 688	4 201	4 692	5 146	5 548	5 883	6 138
60	-	-	-	4 310	4 856	5 371	5 840	6 248	6 581
65	-	-	-	-	4 987	5 567	6 106	6 591	7 006

Current consumption in A

30	5.29	5.62	5.97	6.32	6.63	6.88	7.03	7.07	6.94
35	5.44	5.79	6.18	6.57	6.94	7.25	7.48	7.60	7.57
40	5.56	5.95	6.37	6.82	7.25	7.63	7.94	8.15	8.22
45	5.65	6.08	6.55	7.06	7.56	8.02	8.42	8.72	8.90
50	-	6.17	6.71	7.28	7.85	8.40	8.89	9.30	9.59
55	-	-	6.83	7.47	8.12	8.76	9.36	9.88	10.29
60	-	-	-	7.62	8.36	9.10	9.81	10.44	10.99
65	-	-	-	-	8.57	9.41	10.23	10.99	11.67

Mass flow in kg/h

30	89	121	158	201	251	308	373	447	530
35	83	114	151	194	244	301	366	440	523
40	76	108	145	187	237	293	358	431	514
45	71	102	138	180	229	285	349	421	503
50	-	97	132	173	221	276	339	410	491
55	-	-	127	167	214	267	329	399	478
60	-	-	-	162	207	259	319	387	465
65	-	-	-	-	201	251	309	376	451

Coefficient of performance (C.O.P.)

30	2.02	2.34	2.71	3.15	3.67	4.30	5.10	6.12	7.48
35	1.67	1.99	2.34	2.74	3.20	3.75	4.42	5.26	6.34
40	1.40	1.71	2.04	2.39	2.80	3.27	3.84	4.54	5.41
45	1.20	1.49	1.79	2.11	2.46	2.87	3.35	3.94	4.65
50	-	1.32	1.58	1.86	2.17	2.53	2.94	3.42	4.01
55	-	-	1.42	1.66	1.93	2.23	2.58	2.99	3.47
60	-	-	-	1.50	1.72	1.98	2.27	2.61	3.01
65	-	-	-	-	1.55	1.76	2.00	2.29	2.62

Nominal performance at to = 7.2 °C, tc = 54.4 °C

Cooling capacity	15 820	W
Power input	5 664	W
Current consumption	9.54	A
Mass flow	360	kg/h
C.O.P.	2.79	

Pressure switch settings

Maximum HP switch setting	27.7	bar(g)
Minimum LP switch setting	0.2	bar(g)
LP pump down setting	0.9	bar(g)

Sound power data

Sound power level	0	dB(A)
With acoustic hood	0	dB(A)

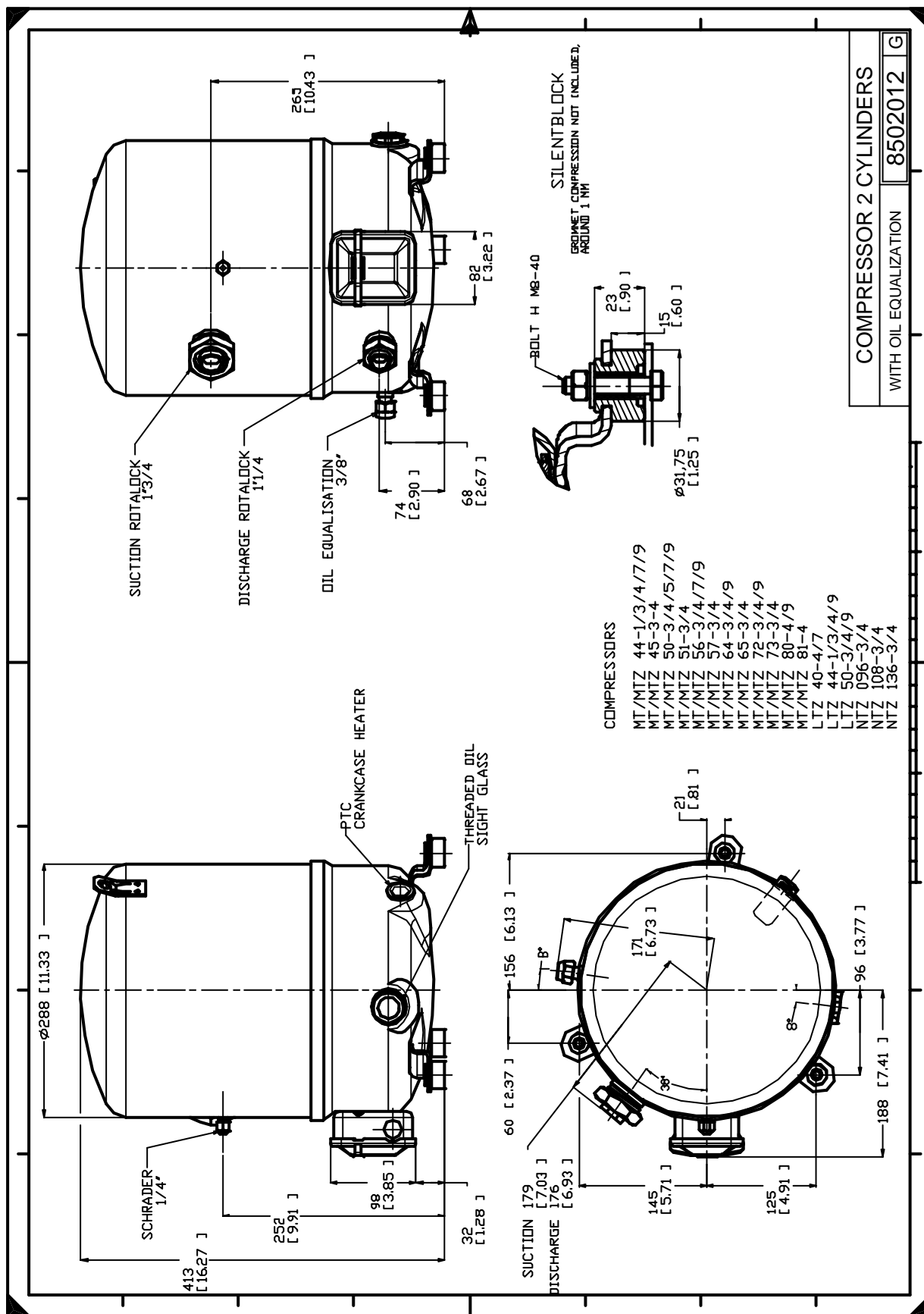
to: Evaporating temperature at dew point

tc: Condensing temperature at dew point

Rating conditions : Superheat = 11.1 K , Subcooling = 8.3 K

All performance data +/- 5%

Danfoss can accept no responsibility for possible errors in catalogues, brochures and other printed material. Danfoss reserves the right to alter its products without notice. This also applies to products already on order provided that such alternations can be made without subsequential changes being necessary in specifications already agreed. All trademarks in this material are property of the respective companies. Danfoss, the Danfoss logotype and Maneurop are trademarks of Danfoss A/S. All rights reserved.



Danfoss can accept no responsibility for possible errors in catalogues, brochures and other printed material. Danfoss reserves the right to alter its products without notice. This also applies to products already on order provided that such alternations can be made without consequential changes being necessary in specifications already agreed. All trademarks in this material are property of the respective companies. Danfoss, the Danfoss logotype and Maneurop are trademarks of Danfoss A/S. All rights reserved.