



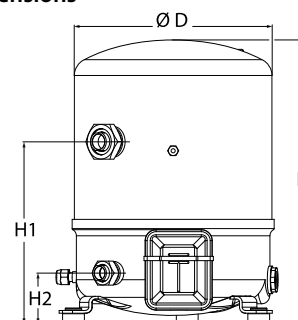
Datasheets

Maneurop[®] Reciprocating compressors MT / MTZ / MPZ / NTZ



General Characteristics

Model number (on compressor nameplate)		MT72HN4A
Code number for Industrial pack**		MT72-4M
Drawing number		8502014e
Suction and discharge connections		Rotolock
Suction connection		1-3/4" Rotolock
Discharge connection		1-1/4" Rotolock
Suction connection with supplied sleeve		7/8" ODF
Discharge connection with supplied sleeve		3/4" ODF
Oil sight glass		None
Oil equalisation connection		None
Oil drain connection		None
LP gauge port		Schrader
IPR valve		30 bar / 8 bar
Cylinders		2
Swept volume		120,94 cm ³ /rev
Displacement @ Nominal speed		21.0 m ³ /h @ 2900 rpm - 25.4 m ³ /h @ 3500 rpm
Net weight		40 kg
Oil charge		1,8 litre, Mineral - 160P
Maximum system test pressure Low Side / High side		25 bar(g) / 30 bar(g)
Maximum differential test pressure		30 bar
Maximum number of starts per hour		12
Refrigerant charge limit		5 kg
Approved refrigerants		R22, R417A-160PZ

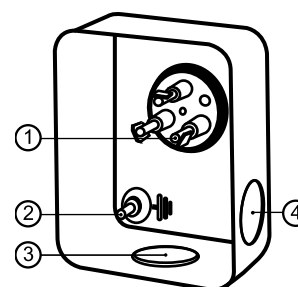
Dimensions


D=288 mm

H=413 mm

H1=265 mm

H2=74 mm

Terminal box


IP55 (with cable gland)

1: Spade connectors 1/4"

2: Earth M4-12

3: Knock-out Ø 21 mm (0.83")

4: Hole Ø 21 mm (0.83")

Electrical Characteristics

Nominal voltage	380-400V/3/50Hz - 460V/3/60Hz
Voltage range	340-440 V @ 50Hz - 414-506 V @ 60Hz
Winding resistance (between phases) +/- 7% at 25°C	1.9 Ω
Maximum Continuous Current (MCC)	15.5 A
Locked Rotor Amps (LRA)	80 A
Motor protection	Internal overload protector

Recommended Installation torques

Oil sight glass	0 Nm
Power connections / Earth connection	Nm / 2 Nm
Mounting bolts	15 Nm

Parts shipped with compressor

Mounting kit with grommets, bolts, nuts, sleeves and washers
Initial oil charge
Installation instructions

Approvals : CE certified, UL certified (file SA6873), -

*Singlepack: Compressor in cardboard box

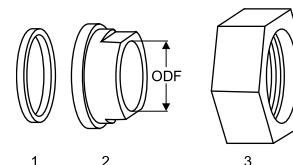
**Industrial pack: 6 Unboxed compressors on pallet (order per multiples of 6)

Rotolock accessories, suction side

Code no.

Solder sleeve, P07 (1-3/4" Rotolock, 7/8" ODF)	8153013
Angle adapter, C07 (1-3/4" Rotolock, 7/8" ODF)	8168008
Rotolock valve, V07 (1-3/4" Rotolock, 7/8" ODF)	8168032
Gasket, 1-3/4"	8156132

Gaskets, sleeves and nuts



- 1: Gasket
- 2: Solder sleeve
- 3: Rotolock nut

Rotolock accessories, discharge side

Code no.

Solder sleeve, P04 (1-1/4" Rotolock, 3/4" ODF)	8153008
Angle adapter, C04 (1-1/4" Rotolock, 3/4" ODF)	8168006
Rotolock valve, V04 (1-1/4" Rotolock, 3/4" ODF)	8168029
Gasket, 1-1/4"	8156131

Rotolock accessories, sets

Code no.

Angle adapter set, C07 (1-3/4"~7/8"), C04 (1-1/4"~3/4")	7703013
Valve set, V07 (1-3/4"~7/8"), V04 (1-1/4"~3/4")	7703006
Gasket set, 1", 1-1/4", 1-3/4", OSG gaskets black & white	8156009

Oil / lubricants

Code no.

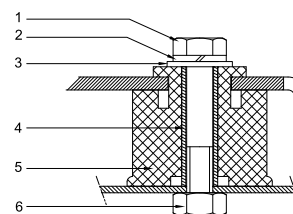
Mineral oil, 160P, 2 litre can	7754001
Mineral oil, 160P, 5 litre can	7754002

Crankcase heaters

Code no.

PTC heater 27W	120Z0459
Belt type crankcase heater, 65 W, 230 V, CE mark, UL	7773107
Belt type crankcase heater, 65 W, 400 V, CE mark, UL	7773117
Belt type crankcase heater, 65 W, 460 V, CE mark, UL	120Z0466

Mounting kit



- 1: Bolt (3x)
- 2: Lock washer (3x)
- 3: Flat washer (3x)
- 4: Sleeve (3x)
- 5: Grommet (3x)
- 6: Nut (3x)

Miscellaneous accessories

Code no.

Electronic soft start kit, MCI 15 C	7705006
Soft start kit with statoric resistors, prewired box, SCR01	7702003
Acoustic hood for 2 cylinder compressor	7755002

Spare parts

Code no.

Mounting kit for 1 and 2 cylinder compressor, including 3 grommets, 3 bolts	8156001
Service kit for terminal box 80 x 96 mm, including 1 cover, 1 clamp	8156134

Danfoss can accept no responsibility for possible errors in catalogues, brochures and other printed material. Danfoss reserves the right to alter its products without notice. This also applies to products already on order provided that such alternations can be made without subsequential changes being necessary in specifications already agreed. All trademarks in this material are property of the respective companies. Danfoss, the Danfoss logotype and Maneurop are trademarks of Danfoss A/S. All rights reserved.

Performance data at 50 Hz, EN 12900 rating conditions
R22

Cond. temp. in °C (tc)	Evaporating temperature in °C (to)							
	-25	-20	-15	-10	-5	0	5	10

Cooling capacity in W

30	4 564	6 288	8 324	10 706	13 468	16 644	20 270	24 378	29 004
35	4 047	5 708	7 662	9 943	12 585	15 623	19 090	23 020	27 449
40	3 598	5 185	7 046	9 215	11 726	14 613	17 910	21 652	25 873
45	3 224	4 723	6 478	8 521	10 888	13 612	16 726	20 265	24 263
50	-	4 337	5 975	7 883	10 094	12 643	15 564	18 890	22 656
55	-	-	5 541	7 300	9 345	11 708	14 422	17 523	21 043
60	-	-	-	6 781	8 646	10 810	13 306	16 167	19 428
65	-	-	-	-	8 016	9 970	12 237	14 849	17 841

Power input in W

30	2 637	2 993	3 347	3 689	4 011	4 304	4 557	4 761	4 909
35	2 768	3 137	3 507	3 870	4 216	4 536	4 822	5 062	5 249
40	2 911	3 295	3 684	4 070	4 443	4 794	5 114	5 394	5 623
45	3 068	3 469	3 880	4 291	4 694	5 079	5 436	5 757	6 032
50	-	3 660	4 096	4 536	4 971	5 391	5 789	6 154	6 476
55	-	-	4 333	4 804	5 274	5 734	6 174	6 585	6 959
60	-	-	-	5 098	5 606	6 107	6 593	7 054	7 480
65	-	-	-	-	5 968	6 513	7 047	7 560	8 043

Current consumption in A

30	5.52	5.92	6.35	6.78	7.20	7.59	7.94	8.23	8.44
35	5.67	6.09	6.54	7.01	7.47	7.92	8.32	8.67	8.94
40	5.83	6.28	6.77	7.28	7.79	8.28	8.74	9.15	9.50
45	6.01	6.50	7.02	7.58	8.14	8.69	9.22	9.70	10.12
50	-	6.74	7.31	7.91	8.53	9.15	9.74	10.30	10.80
55	-	-	7.63	8.29	8.98	9.66	10.33	10.97	11.56
60	-	-	-	8.72	9.47	10.23	10.98	11.70	12.38
65	-	-	-	-	10.02	10.85	11.69	12.51	13.29

Mass flow in kg/h

30	100	136	177	224	278	340	409	486	573
35	92	128	169	217	271	332	400	478	564
40	85	121	162	209	262	323	391	467	553
45	80	115	156	202	254	314	381	456	540
50	-	111	150	195	247	305	370	444	526
55	-	-	147	190	240	296	360	431	512
60	-	-	-	187	234	288	350	419	497
65	-	-	-	-	230	282	341	407	482

Coefficient of performance (C.O.P.)

30	1.73	2.10	2.49	2.90	3.36	3.87	4.45	5.12	5.91
35	1.46	1.82	2.18	2.57	2.99	3.44	3.96	4.55	5.23
40	1.24	1.57	1.91	2.26	2.64	3.05	3.50	4.01	4.60
45	1.05	1.36	1.67	1.99	2.32	2.68	3.08	3.52	4.02
50	-	1.18	1.46	1.74	2.03	2.35	2.69	3.07	3.50
55	-	-	1.28	1.52	1.77	2.04	2.34	2.66	3.02
60	-	-	-	1.33	1.54	1.77	2.02	2.29	2.60
65	-	-	-	-	1.34	1.53	1.74	1.96	2.22

Nominal performance at to = 5 °C, tc = 50 °C

Cooling capacity	15 564	W
Power input	5 789	W
Current consumption	9.74	A
Mass flow	370	kg/h
C.O.P.	2.69	

Pressure switch settings

Maximum HP switch setting	27.7	bar(g)
Minimum LP switch setting	0.2	bar(g)
LP pump down setting	0.9	bar(g)

Sound power data

Sound power level	0	dB(A)
With acoustic hood	0	dB(A)

to: Evaporating temperature at dew point

tc: Condensing temperature at dew point

Rating conditions : Superheat = 10 K , Subcooling = 0 K

All performance data +/- 5%

Danfoss can accept no responsibility for possible errors in catalogues, brochures and other printed material. Danfoss reserves the right to alter its products without notice. This also applies to products already on order provided that such alternations can be made without subsequential changes being necessary in specifications already agreed. All trademarks in this material are property of the respective companies. Danfoss, the Danfoss logotype and Maneurop are trademarks of Danfoss A/S. All rights reserved.

Performance data at 50 Hz, ARI rating conditions
R22

Cond. temp. in °C (tc)	Evaporating temperature in °C (to)							
	-25	-20	-15	-10	-5	0	5	10

Cooling capacity in W

30	4 846	6 672	8 825	11 342	14 257	17 607	21 428	25 754	30 622
35	4 313	6 078	8 152	10 570	13 368	16 582	20 247	24 399	29 073
40	3 850	5 542	7 524	9 831	12 499	15 563	19 060	23 024	27 492
45	3 466	5 073	6 950	9 133	11 658	14 561	17 877	21 641	25 890
50	-	4 681	6 441	8 488	10 858	13 586	16 708	20 260	24 277
55	-	-	6 008	7 906	10 108	12 649	15 565	18 892	22 665
60	-	-	-	7 397	9 419	11 760	14 458	17 547	21 063
65	-	-	-	-	8 801	10 930	13 397	16 235	19 482

Power input in W

30	2 637	2 993	3 347	3 689	4 011	4 304	4 557	4 761	4 909
35	2 768	3 137	3 507	3 870	4 216	4 536	4 822	5 062	5 249
40	2 911	3 295	3 684	4 070	4 443	4 794	5 114	5 394	5 623
45	3 068	3 469	3 880	4 291	4 694	5 079	5 436	5 757	6 032
50	-	3 660	4 096	4 536	4 971	5 391	5 789	6 154	6 476
55	-	-	4 333	4 804	5 274	5 734	6 174	6 585	6 959
60	-	-	-	5 098	5 606	6 107	6 593	7 054	7 480
65	-	-	-	-	5 968	6 513	7 047	7 560	8 043

Current consumption in A

30	5.52	5.92	6.35	6.78	7.20	7.59	7.94	8.23	8.44
35	5.67	6.09	6.54	7.01	7.47	7.92	8.32	8.67	8.94
40	5.83	6.28	6.77	7.28	7.79	8.28	8.74	9.15	9.50
45	6.01	6.50	7.02	7.58	8.14	8.69	9.22	9.70	10.12
50	-	6.74	7.31	7.91	8.53	9.15	9.74	10.30	10.80
55	-	-	7.63	8.29	8.98	9.66	10.33	10.97	11.56
60	-	-	-	8.72	9.47	10.23	10.98	11.70	12.38
65	-	-	-	-	10.02	10.85	11.69	12.51	13.29

Mass flow in kg/h

30	99	135	176	223	277	338	407	484	570
35	91	127	168	216	269	330	398	475	561
40	84	120	161	208	261	321	389	465	549
45	79	115	155	201	253	312	379	453	537
50	-	110	150	194	245	303	368	441	523
55	-	-	146	189	239	295	358	429	509
60	-	-	-	186	233	287	348	417	494
65	-	-	-	-	229	280	339	405	479

Coefficient of performance (C.O.P.)

30	1.84	2.23	2.64	3.07	3.55	4.09	4.70	5.41	6.24
35	1.56	1.94	2.32	2.73	3.17	3.66	4.20	4.82	5.54
40	1.32	1.68	2.04	2.42	2.81	3.25	3.73	4.27	4.89
45	1.13	1.46	1.79	2.13	2.48	2.87	3.29	3.76	4.29
50	-	1.28	1.57	1.87	2.18	2.52	2.89	3.29	3.75
55	-	-	1.39	1.65	1.92	2.21	2.52	2.87	3.26
60	-	-	-	1.45	1.68	1.93	2.19	2.49	2.82
65	-	-	-	-	1.47	1.68	1.90	2.15	2.42

Nominal performance at to = 7.2 °C, tc = 54.4 °C

Cooling capacity	17 124	W
Power input	6 309	W
Current consumption	10.54	A
Mass flow	389	kg/h
C.O.P.	2.71	

Pressure switch settings

Maximum HP switch setting	27.7	bar(g)
Minimum LP switch setting	0.2	bar(g)
LP pump down setting	0.9	bar(g)

Sound power data

Sound power level	0	dB(A)
With acoustic hood	0	dB(A)

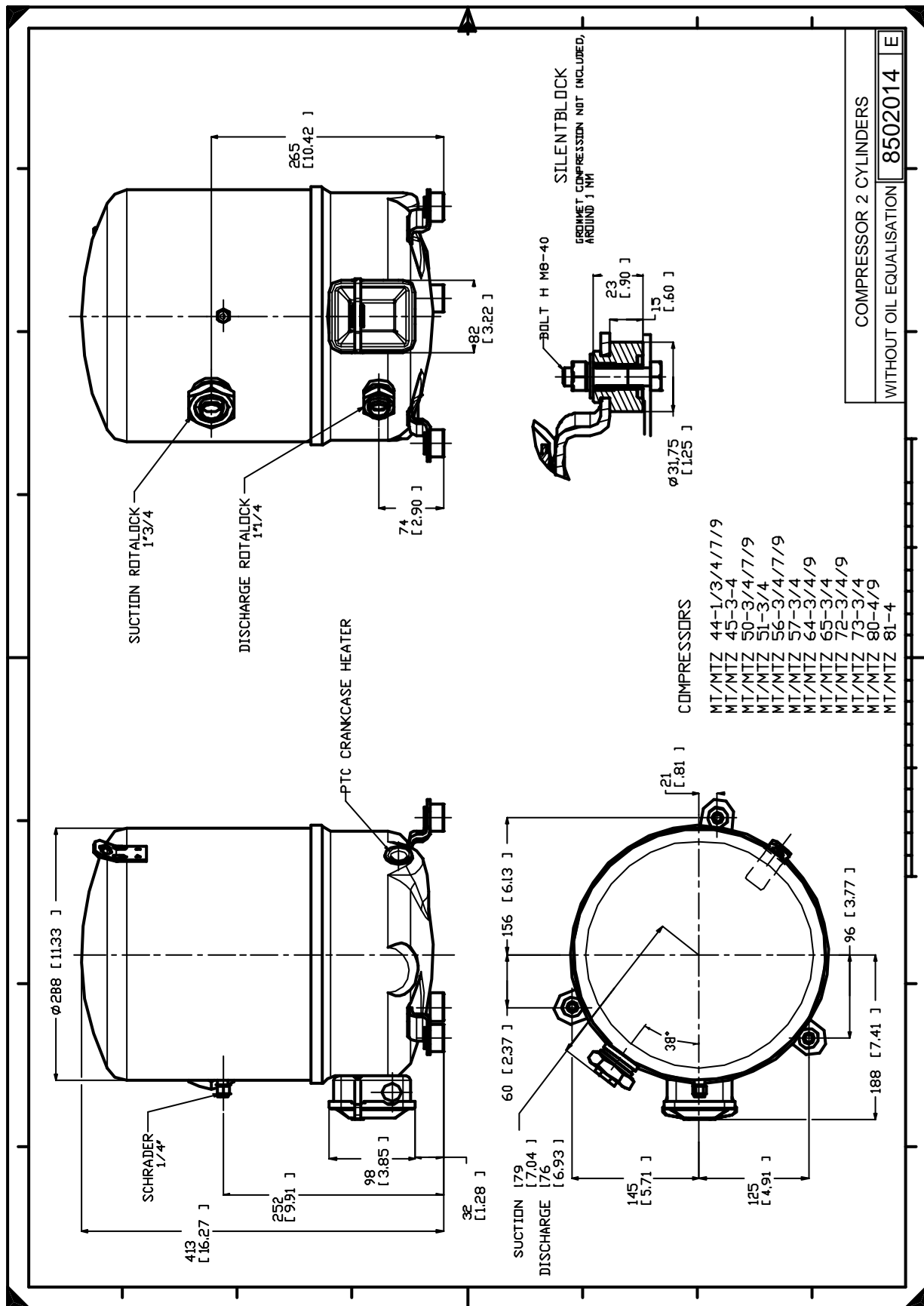
to: Evaporating temperature at dew point

tc: Condensing temperature at dew point

Rating conditions : Superheat = 11.1 K , Subcooling = 8.3 K

All performance data +/- 5%

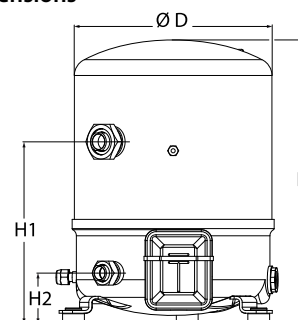
Danfoss can accept no responsibility for possible errors in catalogues, brochures and other printed material. Danfoss reserves the right to alter its products without notice. This also applies to products already on order provided that such alternations can be made without subsequential changes being necessary in specifications already agreed. All trademarks in this material are property of the respective companies. Danfoss, the Danfoss logotype and Maneurop are trademarks of Danfoss A/S. All rights reserved.



Danfoss can accept no responsibility for possible errors in catalogues, brochures and other printed material. Danfoss reserves the right to alter its products without notice. This also applies to products already on order provided that such alternations can be made without subsequential changes being necessary in specifications already agreed. All trademarks in this material are property of the respective companies. Danfoss, the Danfoss logotype and Maneurop are trademarks of Danfoss A/S. All rights reserved.

General Characteristics

Model number (on compressor nameplate)		MT72HN4AVE
Code number for Singlepack*		MT72-4VI
Code number for Industrial pack**		MT72-4VM
Drawing number		8502012g
Suction and discharge connections		Rotolock
Suction connection		1-3/4" Rotolock
Discharge connection		1-1/4" Rotolock
Suction connection with supplied sleeve		7/8" ODF
Discharge connection with supplied sleeve		3/4" ODF
Oil sight glass		Threaded
Oil equalisation connection		3/8" flare SAE
Oil drain connection		None
LP gauge port		Schrader
IPR valve		30 bar / 8 bar
Cylinders		2
Swept volume		120,94 cm ³ /rev
Displacement @ Nominal speed		21.0 m ³ /h @ 2900 rpm - 25.4 m ³ /h @ 3500 rpm
Net weight		40 kg
Oil charge		1,8 litre, Mineral - 160P
Maximum system test pressure Low Side / High side		25 bar(g) / 30 bar(g)
Maximum differential test pressure		30 bar
Maximum number of starts per hour		12
Refrigerant charge limit		5 kg
Approved refrigerants		R22, R417A-160PZ

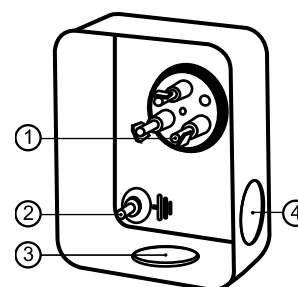
Dimensions


D=288 mm

H=413 mm

H1=265 mm

H2=74 mm

Terminal box


IP55 (with cable gland)

1: Spade connectors 1/4"

2: Earth M4-12

3: Knock-out Ø 21 mm (0.83")

4: Hole Ø 21 mm (0.83")

Electrical Characteristics

Nominal voltage	380-400V/3/50Hz - 460V/3/60Hz
Voltage range	340-440 V @ 50Hz - 414-506 V @ 60Hz
Winding resistance (between phases) +/- 7% at 25°C	1.9 Ω
Maximum Continuous Current (MCC)	15.5 A
Locked Rotor Amps (LRA)	80 A
Motor protection	Internal overload protector

Recommended Installation torques

Oil sight glass	50 Nm
Power connections / Earth connection	Nm / 2 Nm
Mounting bolts	15 Nm

Parts shipped with compressor

Mounting kit with grommets, bolts, nuts, sleeves and washers
Suction & Discharge solder sleeves, rotolock nuts and gaskets (shipped with rotolock version only)
Initial oil charge
Installation instructions

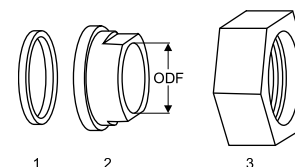
Approvals : CE certified, UL certified (file SA6873), -

*Singlepack: Compressor in cardboard box

**Industrial pack: 6 Unboxed compressors on pallet (order per multiples of 6)

Rotolock accessories, suction side
Code no.

Solder sleeve, P07 (1-3/4" Rotolock, 7/8" ODF)	8153013
Angle adapter, C07 (1-3/4" Rotolock, 7/8" ODF)	8168008
Rotolock valve, V07 (1-3/4" Rotolock, 7/8" ODF)	8168032
Gasket, 1-3/4"	8156132

Gaskets, sleeves and nuts


- 1: Gasket
- 2: Solder sleeve
- 3: Rotolock nut

Rotolock accessories, discharge side
Code no.

Solder sleeve, P04 (1-1/4" Rotolock, 3/4" ODF)	8153008
Angle adapter, C04 (1-1/4" Rotolock, 3/4" ODF)	8168006
Rotolock valve, V04 (1-1/4" Rotolock, 3/4" ODF)	8168029
Gasket, 1-1/4"	8156131

Rotolock accessories, sets
Code no.

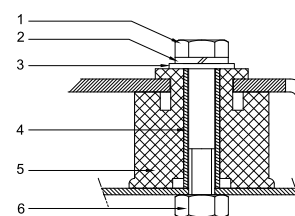
Angle adapter set, C07 (1-3/4"~7/8"), C04 (1-1/4"~3/4")	7703013
Valve set, V07 (1-3/4"~7/8"), V04 (1-1/4"~3/4")	7703006
Gasket set, 1", 1-1/4", 1-3/4", OSG gaskets black & white	8156009

Oil / lubricants
Code no.

Mineral oil, 160P, 2 litre can	7754001
Mineral oil, 160P, 5 litre can	7754002

Crankcase heaters
Code no.

PTC heater 27W	120Z0459
Belt type crankcase heater, 65 W, 230 V, CE mark, UL	7773107
Belt type crankcase heater, 65 W, 400 V, CE mark, UL	7773117
Belt type crankcase heater, 65 W, 460 V, CE mark, UL	120Z0466

Mounting kit


- 1: Bolt (3x)
- 2: Lock washer (3x)
- 3: Flat washer (3x)
- 4: Sleeve (3x)
- 5: Grommet (3x)
- 6: Nut (3x)

Miscellaneous accessories
Code no.

Electronic soft start kit, MCI 15 C	7705006
Soft start kit with statoric resistors, prewired box, SCR01	7702003
Acoustic hood for 2 cylinder compressor	7755002
Oil equalisation nut	8153127

Spare parts
Code no.

Mounting kit for 1 and 2 cylinder compressor, including 3 grommets, 3 bolts	8156001
Oil sight glass with gaskets (black & white)	8156019
Gasket for oil sight glass (black chloroprene)	8156145
Service kit for terminal box 80 x 96 mm, including 1 cover, 1 clamp	8156134

Performance data at 50 Hz, EN 12900 rating conditions
R22

Cond. temp. in °C (tc)	Evaporating temperature in °C (to)							
	-25	-20	-15	-10	-5	0	5	10

Cooling capacity in W

30	4 564	6 288	8 324	10 706	13 468	16 644	20 270	24 378	29 004
35	4 047	5 708	7 662	9 943	12 585	15 623	19 090	23 020	27 449
40	3 598	5 185	7 046	9 215	11 726	14 613	17 910	21 652	25 873
45	3 224	4 723	6 478	8 521	10 888	13 612	16 726	20 265	24 263
50	-	4 337	5 975	7 883	10 094	12 643	15 564	18 890	22 656
55	-	-	5 541	7 300	9 345	11 708	14 422	17 523	21 043
60	-	-	-	6 781	8 646	10 810	13 306	16 167	19 428
65	-	-	-	-	8 016	9 970	12 237	14 849	17 841

Power input in W

30	2 637	2 993	3 347	3 689	4 011	4 304	4 557	4 761	4 909
35	2 768	3 137	3 507	3 870	4 216	4 536	4 822	5 062	5 249
40	2 911	3 295	3 684	4 070	4 443	4 794	5 114	5 394	5 623
45	3 068	3 469	3 880	4 291	4 694	5 079	5 436	5 757	6 032
50	-	3 660	4 096	4 536	4 971	5 391	5 789	6 154	6 476
55	-	-	4 333	4 804	5 274	5 734	6 174	6 585	6 959
60	-	-	-	5 098	5 606	6 107	6 593	7 054	7 480
65	-	-	-	-	5 968	6 513	7 047	7 560	8 043

Current consumption in A

30	5.52	5.92	6.35	6.78	7.20	7.59	7.94	8.23	8.44
35	5.67	6.09	6.54	7.01	7.47	7.92	8.32	8.67	8.94
40	5.83	6.28	6.77	7.28	7.79	8.28	8.74	9.15	9.50
45	6.01	6.50	7.02	7.58	8.14	8.69	9.22	9.70	10.12
50	-	6.74	7.31	7.91	8.53	9.15	9.74	10.30	10.80
55	-	-	7.63	8.29	8.98	9.66	10.33	10.97	11.56
60	-	-	-	8.72	9.47	10.23	10.98	11.70	12.38
65	-	-	-	-	10.02	10.85	11.69	12.51	13.29

Mass flow in kg/h

30	100	136	177	224	278	340	409	486	573
35	92	128	169	217	271	332	400	478	564
40	85	121	162	209	262	323	391	467	553
45	80	115	156	202	254	314	381	456	540
50	-	111	150	195	247	305	370	444	526
55	-	-	147	190	240	296	360	431	512
60	-	-	-	187	234	288	350	419	497
65	-	-	-	-	230	282	341	407	482

Coefficient of performance (C.O.P.)

30	1.73	2.10	2.49	2.90	3.36	3.87	4.45	5.12	5.91
35	1.46	1.82	2.18	2.57	2.99	3.44	3.96	4.55	5.23
40	1.24	1.57	1.91	2.26	2.64	3.05	3.50	4.01	4.60
45	1.05	1.36	1.67	1.99	2.32	2.68	3.08	3.52	4.02
50	-	1.18	1.46	1.74	2.03	2.35	2.69	3.07	3.50
55	-	-	1.28	1.52	1.77	2.04	2.34	2.66	3.02
60	-	-	-	1.33	1.54	1.77	2.02	2.29	2.60
65	-	-	-	-	1.34	1.53	1.74	1.96	2.22

Nominal performance at to = 5 °C, tc = 50 °C

Cooling capacity	15 564	W
Power input	5 789	W
Current consumption	9.74	A
Mass flow	370	kg/h
C.O.P.	2.69	

Pressure switch settings

Maximum HP switch setting	27.7	bar(g)
Minimum LP switch setting	0.2	bar(g)
LP pump down setting	0.9	bar(g)

Sound power data

Sound power level	0	dB(A)
With acoustic hood	0	dB(A)

to: Evaporating temperature at dew point

tc: Condensing temperature at dew point

Rating conditions : Superheat = 10 K , Subcooling = 0 K

All performance data +/- 5%

Danfoss can accept no responsibility for possible errors in catalogues, brochures and other printed material. Danfoss reserves the right to alter its products without notice. This also applies to products already on order provided that such alternations can be made without subsequential changes being necessary in specifications already agreed. All trademarks in this material are property of the respective companies. Danfoss, the Danfoss logotype and Maneurop are trademarks of Danfoss A/S. All rights reserved.

Performance data at 50 Hz, ARI rating conditions

R22

Cond. temp. in °C (tc)	Evaporating temperature in °C (to)							
	-25	-20	-15	-10	-5	0	5	10

Cooling capacity in W

30	4 846	6 672	8 825	11 342	14 257	17 607	21 428	25 754	30 622
35	4 313	6 078	8 152	10 570	13 368	16 582	20 247	24 399	29 073
40	3 850	5 542	7 524	9 831	12 499	15 563	19 060	23 024	27 492
45	3 466	5 073	6 950	9 133	11 658	14 561	17 877	21 641	25 890
50	-	4 681	6 441	8 488	10 858	13 586	16 708	20 260	24 277
55	-	-	6 008	7 906	10 108	12 649	15 565	18 892	22 665
60	-	-	-	7 397	9 419	11 760	14 458	17 547	21 063
65	-	-	-	-	8 801	10 930	13 397	16 235	19 482

Power input in W

30	2 637	2 993	3 347	3 689	4 011	4 304	4 557	4 761	4 909
35	2 768	3 137	3 507	3 870	4 216	4 536	4 822	5 062	5 249
40	2 911	3 295	3 684	4 070	4 443	4 794	5 114	5 394	5 623
45	3 068	3 469	3 880	4 291	4 694	5 079	5 436	5 757	6 032
50	-	3 660	4 096	4 536	4 971	5 391	5 789	6 154	6 476
55	-	-	4 333	4 804	5 274	5 734	6 174	6 585	6 959
60	-	-	-	5 098	5 606	6 107	6 593	7 054	7 480
65	-	-	-	-	5 968	6 513	7 047	7 560	8 043

Current consumption in A

30	5.52	5.92	6.35	6.78	7.20	7.59	7.94	8.23	8.44
35	5.67	6.09	6.54	7.01	7.47	7.92	8.32	8.67	8.94
40	5.83	6.28	6.77	7.28	7.79	8.28	8.74	9.15	9.50
45	6.01	6.50	7.02	7.58	8.14	8.69	9.22	9.70	10.12
50	-	6.74	7.31	7.91	8.53	9.15	9.74	10.30	10.80
55	-	-	7.63	8.29	8.98	9.66	10.33	10.97	11.56
60	-	-	-	8.72	9.47	10.23	10.98	11.70	12.38
65	-	-	-	-	10.02	10.85	11.69	12.51	13.29

Mass flow in kg/h

30	99	135	176	223	277	338	407	484	570
35	91	127	168	216	269	330	398	475	561
40	84	120	161	208	261	321	389	465	549
45	79	115	155	201	253	312	379	453	537
50	-	110	150	194	245	303	368	441	523
55	-	-	146	189	239	295	358	429	509
60	-	-	-	186	233	287	348	417	494
65	-	-	-	-	229	280	339	405	479

Coefficient of performance (C.O.P.)

30	1.84	2.23	2.64	3.07	3.55	4.09	4.70	5.41	6.24
35	1.56	1.94	2.32	2.73	3.17	3.66	4.20	4.82	5.54
40	1.32	1.68	2.04	2.42	2.81	3.25	3.73	4.27	4.89
45	1.13	1.46	1.79	2.13	2.48	2.87	3.29	3.76	4.29
50	-	1.28	1.57	1.87	2.18	2.52	2.89	3.29	3.75
55	-	-	1.39	1.65	1.92	2.21	2.52	2.87	3.26
60	-	-	-	1.45	1.68	1.93	2.19	2.49	2.82
65	-	-	-	-	1.47	1.68	1.90	2.15	2.42

Nominal performance at to = 7.2 °C, tc = 54.4 °C

Cooling capacity	17 124	W
Power input	6 309	W
Current consumption	10.54	A
Mass flow	389	kg/h
C.O.P.	2.71	

Pressure switch settings

Maximum HP switch setting	27.7	bar(g)
Minimum LP switch setting	0.2	bar(g)
LP pump down setting	0.9	bar(g)

Sound power data

Sound power level	0	dB(A)
With acoustic hood	0	dB(A)

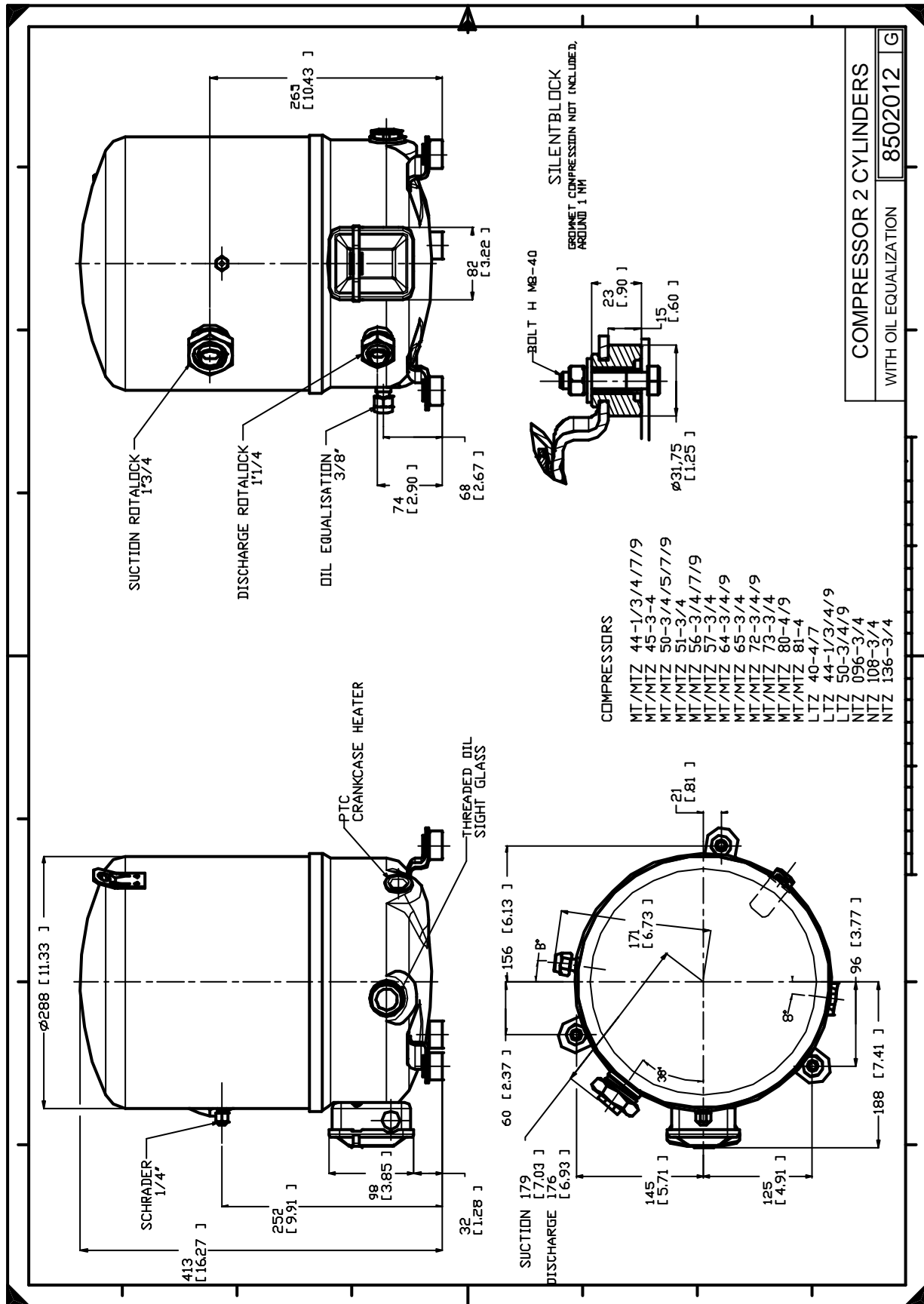
to: Evaporating temperature at dew point

tc: Condensing temperature at dew point

Rating conditions : Superheat = 11.1 K , Subcooling = 8.3 K

All performance data +/- 5%

Danfoss can accept no responsibility for possible errors in catalogues, brochures and other printed material. Danfoss reserves the right to alter its products without notice. This also applies to products already on order provided that such alternations can be made without subsequential changes being necessary in specifications already agreed. All trademarks in this material are property of the respective companies. Danfoss, the Danfoss logotype and Maneurop are trademarks of Danfoss A/S. All rights reserved.



Danfoss can accept no responsibility for possible errors in catalogues, brochures and other printed material. Danfoss reserves the right to alter its products without notice. This also applies to products already on order provided that such alternations can be made without consequential changes being necessary in specifications already agreed. All trademarks in this material are property of the respective companies. Danfoss, the Danfoss logotype and Maneurop are trademarks of Danfoss A/S. All rights reserved.