



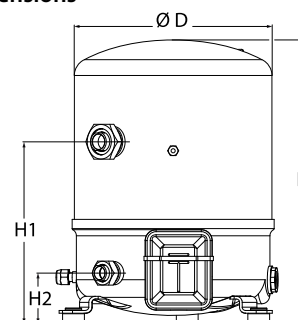
Datasheets

# Maneurop<sup>®</sup> Reciprocating compressors MT / MTZ / MPZ / NTZ



**General Characteristics**

Model number (on compressor nameplate)		<b>MT80HP4A</b>
Code number for Industrial pack**		MT80-4M
Drawing number		8502014e
Suction and discharge connections		Rotolock
Suction connection		1-3/4" Rotolock
Discharge connection		1-1/4" Rotolock
Suction connection with supplied sleeve		1-1/8" ODF
Discharge connection with supplied sleeve		3/4" ODF
Oil sight glass		None
Oil equalisation connection		None
Oil drain connection		None
LP gauge port		Schrader
IPR valve		30 bar / 8 bar
Cylinders		2
Swept volume		135,78 cm <sup>3</sup> /rev
Displacement @ Nominal speed		23.6 m <sup>3</sup> /h @ 2900 rpm - 28.5 m <sup>3</sup> /h @ 3500 rpm
Net weight		40 kg
Oil charge		1,8 litre, Mineral - 160P
Maximum system test pressure Low Side / High side		25 bar(g) / 30 bar(g)
Maximum differential test pressure		30 bar
Maximum number of starts per hour		12
Refrigerant charge limit		5 kg
Approved refrigerants		R22, R417A-160PZ

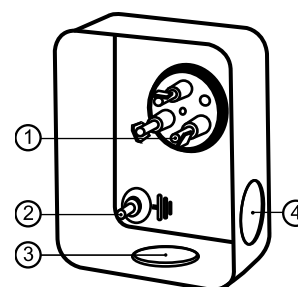
**Dimensions**


D=288 mm

H=413 mm

H1=265 mm

H2=74 mm

**Terminal box**


IP55 (with cable gland)

1: Spade connectors 1/4"

2: Earth M4-12

3: Knock-out Ø 21 mm (0.83")

4: Hole Ø 21 mm (0.83")

**Electrical Characteristics**

Nominal voltage	380-400V/3/50Hz - 460V/3/60Hz
Voltage range	340-440 V @ 50Hz - 414-506 V @ 60Hz
Winding resistance (between phases) +/- 7% at 25°C	1.9 Ω
Maximum Continuous Current (MCC)	18 A
Locked Rotor Amps (LRA)	80 A
Motor protection	Internal overload protector

**Recommended Installation torques**

Oil sight glass	0 Nm
Power connections / Earth connection	Nm / 2 Nm
Mounting bolts	15 Nm

**Parts shipped with compressor**

Mounting kit with grommets, bolts, nuts, sleeves and washers
Initial oil charge
Installation instructions

**Approvals** : CE certified, UL certified (file SA6873), -

\*Singlepack: Compressor in cardboard box

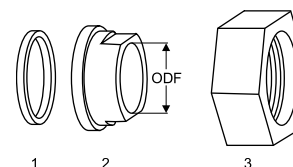
\*\*Industrial pack: 6 Unboxed compressors on pallet (order per multiples of 6)

**Rotolock accessories, suction side**

**Code no.**

Solder sleeve, P02 (1-3/4" Rotolock, 1-1/8" ODF)	8153004
Angle adapter, C02 (1-3/4" Rotolock, 1-1/8" ODF)	8168005
Rotolock valve, V02 (1-3/4" Rotolock, 1-1/8" ODF)	8168028
Gasket, 1-3/4"	8156132

**Gaskets, sleeves and nuts**



- 1: Gasket
- 2: Solder sleeve
- 3: Rotolock nut

**Rotolock accessories, discharge side**

**Code no.**

Solder sleeve, P04 (1-1/4" Rotolock, 3/4" ODF)	8153008
Angle adapter, C04 (1-1/4" Rotolock, 3/4" ODF)	8168006
Rotolock valve, V04 (1-1/4" Rotolock, 3/4" ODF)	8168029
Gasket, 1-1/4"	8156131

**Rotolock accessories, sets**

**Code no.**

Angle adapter set, C02 (1-3/4"~1-1/8"), C04 (1-1/4"~3/4")	7703014
Valve set, V02 (1-3/4"~1-1/8"), V04 (1-1/4"~3/4")	7703009
Gasket set, 1", 1-1/4", 1-3/4", OSG gaskets black & white	8156009

**Oil / lubricants**

**Code no.**

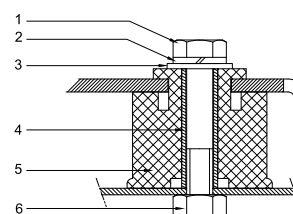
Mineral oil, 160P, 2 litre can	7754001
Mineral oil, 160P, 5 litre can	7754002

**Crankcase heaters**

**Code no.**

PTC heater 27W	120Z0459
Belt type crankcase heater, 65 W, 230 V, CE mark, UL	7773107
Belt type crankcase heater, 65 W, 400 V, CE mark, UL	7773117
Belt type crankcase heater, 65 W, 460 V, CE mark, UL	120Z0466

**Mounting kit**



- 1: Bolt (3x)
- 2: Lock washer (3x)
- 3: Flat washer (3x)
- 4: Sleeve (3x)
- 5: Grommet (3x)
- 6: Nut (3x)

**Miscellaneous accessories**

**Code no.**

Electronic soft start kit, MCI 15 C	7705006
Soft start kit with statoric resistors, prewired box, SCR01	7702003
Acoustic hood for 2 cylinder compressor	7755002

**Spare parts**

**Code no.**

Mounting kit for 1 and 2 cylinder compressor, including 3 grommets, 3 bolts	8156001
Service kit for terminal box 80 x 96 mm, including 1 cover, 1 clamp	8156134

Danfoss can accept no responsibility for possible errors in catalogues, brochures and other printed material. Danfoss reserves the right to alter its products without notice. This also applies to products already on order provided that such alternations can be made without subsequential changes being necessary in specifications already agreed. All trademarks in this material are property of the respective companies. Danfoss, the Danfoss logotype and Maneurop are trademarks of Danfoss A/S. All rights reserved.

**Performance data at 50 Hz, EN 12900 rating conditions**
**R22**

Cond. temp. in °C (tc)	Evaporating temperature in °C (to)							
	-25	-20	-15	-10	-5	0	5	10

**Cooling capacity in W**

30	5 199	7 162	9 479	12 189	15 329	18 939	23 058	27 724	32 977
35	4 617	6 510	8 736	11 333	14 340	17 795	21 738	26 206	31 239
40	4 106	5 916	8 038	10 510	13 371	16 658	20 412	24 670	29 471
45	3 671	5 383	7 387	9 719	12 419	15 525	19 074	23 106	27 659
50	-	4 928	6 801	8 982	11 509	14 421	17 754	21 549	25 843
55	-	-	6 285	8 301	10 642	13 345	16 449	19 992	24 013
60	-	-	-	7 681	9 822	12 303	15 163	18 440	22 172
65	-	-	-	-	9 070	11 317	13 922	16 921	20 353

**Power input in W**

30	2 936	3 341	3 745	4 138	4 509	4 848	5 144	5 389	5 570
35	3 097	3 516	3 937	4 351	4 748	5 117	5 448	5 730	5 954
40	3 271	3 705	4 147	4 585	5 011	5 412	5 780	6 104	6 373
45	3 459	3 912	4 377	4 843	5 299	5 737	6 144	6 512	6 829
50	-	4 138	4 628	5 124	5 615	6 091	6 542	6 956	7 324
55	-	-	4 903	5 432	5 960	6 478	6 973	7 438	7 860
60	-	-	-	5 768	6 336	6 897	7 442	7 958	8 437
65	-	-	-	-	6 744	7 352	7 948	8 520	9 058

**Current consumption in A**

30	6.01	6.43	6.88	7.35	7.81	8.25	8.65	8.98	9.24
35	6.18	6.62	7.11	7.61	8.12	8.61	9.07	9.47	9.80
40	6.36	6.84	7.36	7.91	8.47	9.02	9.54	10.02	10.43
45	6.56	7.08	7.64	8.24	8.86	9.48	10.07	10.63	11.14
50	-	7.35	7.96	8.62	9.31	10.00	10.67	11.32	11.92
55	-	-	8.32	9.05	9.81	10.58	11.34	12.08	12.78
60	-	-	-	9.53	10.37	11.22	12.08	12.93	13.74
65	-	-	-	-	10.99	11.94	12.90	13.86	14.78

**Mass flow in kg/h**

30	113	154	201	255	317	386	465	553	652
35	105	146	193	247	308	378	456	544	642
40	97	138	185	239	299	368	446	533	630
45	91	131	178	230	290	358	434	520	616
50	-	126	171	223	281	348	422	506	600
55	-	-	166	216	273	338	410	492	584
60	-	-	-	211	266	328	399	478	567
65	-	-	-	-	261	320	388	464	550

**Coefficient of performance (C.O.P.)**

30	1.77	2.14	2.53	2.95	3.40	3.91	4.48	5.14	5.92
35	1.49	1.85	2.22	2.60	3.02	3.48	3.99	4.57	5.25
40	1.26	1.60	1.94	2.29	2.67	3.08	3.53	4.04	4.62
45	1.06	1.38	1.69	2.01	2.34	2.71	3.10	3.55	4.05
50	-	1.19	1.47	1.75	2.05	2.37	2.71	3.10	3.53
55	-	-	1.28	1.53	1.79	2.06	2.36	2.69	3.06
60	-	-	-	1.33	1.55	1.78	2.04	2.32	2.63
65	-	-	-	-	1.34	1.54	1.75	1.99	2.25

**Nominal performance at to = 5 °C, tc = 50 °C**

Cooling capacity	17 754	W
Power input	6 542	W
Current consumption	10.67	A
Mass flow	422	kg/h
C.O.P.	2.71	

**Pressure switch settings**

Maximum HP switch setting	27.7	bar(g)
Minimum LP switch setting	0.2	bar(g)
LP pump down setting	0.9	bar(g)

**Sound power data**

Sound power level	0	dB(A)
With acoustic hood	0	dB(A)

to: Evaporating temperature at dew point

tc: Condensing temperature at dew point

Rating conditions : Superheat = 10 K , Subcooling = 0 K

All performance data +/- 5%

Danfoss can accept no responsibility for possible errors in catalogues, brochures and other printed material. Danfoss reserves the right to alter its products without notice. This also applies to products already on order provided that such alternations can be made without subsequential changes being necessary in specifications already agreed. All trademarks in this material are property of the respective companies. Danfoss, the Danfoss logotype and Maneurop are trademarks of Danfoss A/S. All rights reserved.

**Performance data at 50 Hz, ARI rating conditions**
**R22**

Cond. temp. in °C (tc)	Evaporating temperature in °C (to)							
	-25	-20	-15	-10	-5	0	5	10

**Cooling capacity in W**

30	5 520	7 599	10 050	12 912	16 227	20 035	24 375	29 289	34 816
35	4 921	6 933	9 295	12 048	15 232	18 888	23 055	27 775	33 086
40	4 393	6 323	8 583	11 213	14 252	17 742	21 722	26 233	31 315
45	3 947	5 782	7 925	10 417	13 298	16 607	20 386	24 675	29 514
50	-	5 319	7 332	9 672	12 380	15 496	19 060	23 112	27 693
55	-	-	6 815	8 989	11 510	14 418	17 753	21 554	25 864
60	-	-	-	8 379	10 699	13 385	16 476	20 014	24 037
65	-	-	-	-	9 958	12 407	15 241	18 500	22 225

**Power input in W**

30	2 936	3 341	3 745	4 138	4 509	4 848	5 144	5 389	5 570
35	3 097	3 516	3 937	4 351	4 748	5 117	5 448	5 730	5 954
40	3 271	3 705	4 147	4 585	5 011	5 412	5 780	6 104	6 373
45	3 459	3 912	4 377	4 843	5 299	5 737	6 144	6 512	6 829
50	-	4 138	4 628	5 124	5 615	6 091	6 542	6 956	7 324
55	-	-	4 903	5 432	5 960	6 478	6 973	7 438	7 860
60	-	-	-	5 768	6 336	6 897	7 442	7 958	8 437
65	-	-	-	-	6 744	7 352	7 948	8 520	9 058

**Current consumption in A**

30	6.01	6.43	6.88	7.35	7.81	8.25	8.65	8.98	9.24
35	6.18	6.62	7.11	7.61	8.12	8.61	9.07	9.47	9.80
40	6.36	6.84	7.36	7.91	8.47	9.02	9.54	10.02	10.43
45	6.56	7.08	7.64	8.24	8.86	9.48	10.07	10.63	11.14
50	-	7.35	7.96	8.62	9.31	10.00	10.67	11.32	11.92
55	-	-	8.32	9.05	9.81	10.58	11.34	12.08	12.78
60	-	-	-	9.53	10.37	11.22	12.08	12.93	13.74
65	-	-	-	-	10.99	11.94	12.90	13.86	14.78

**Mass flow in kg/h**

30	113	153	200	254	315	384	462	550	648
35	104	145	192	246	307	376	453	541	638
40	96	137	184	237	298	366	443	530	626
45	90	131	177	229	289	356	432	517	612
50	-	125	170	222	280	346	420	503	597
55	-	-	166	215	272	336	408	489	580
60	-	-	-	210	265	326	396	475	564
65	-	-	-	-	259	318	386	462	547

**Coefficient of performance (C.O.P.)**

30	1.88	2.27	2.68	3.12	3.60	4.13	4.74	5.44	6.25
35	1.59	1.97	2.36	2.77	3.21	3.69	4.23	4.85	5.56
40	1.34	1.71	2.07	2.45	2.84	3.28	3.76	4.30	4.91
45	1.14	1.48	1.81	2.15	2.51	2.89	3.32	3.79	4.32
50	-	1.29	1.58	1.89	2.20	2.54	2.91	3.32	3.78
55	-	-	1.39	1.65	1.93	2.23	2.55	2.90	3.29
60	-	-	-	1.45	1.69	1.94	2.21	2.51	2.85
65	-	-	-	-	1.48	1.69	1.92	2.17	2.45

**Nominal performance at to = 7.2 °C, tc = 54.4 °C**

Cooling capacity	19 534	W
Power input	7 126	W
Current consumption	11.58	A
Mass flow	444	kg/h
C.O.P.	2.74	

**Pressure switch settings**

Maximum HP switch setting	27.7	bar(g)
Minimum LP switch setting	0.2	bar(g)
LP pump down setting	0.9	bar(g)

**Sound power data**

Sound power level	0	dB(A)
With acoustic hood	0	dB(A)

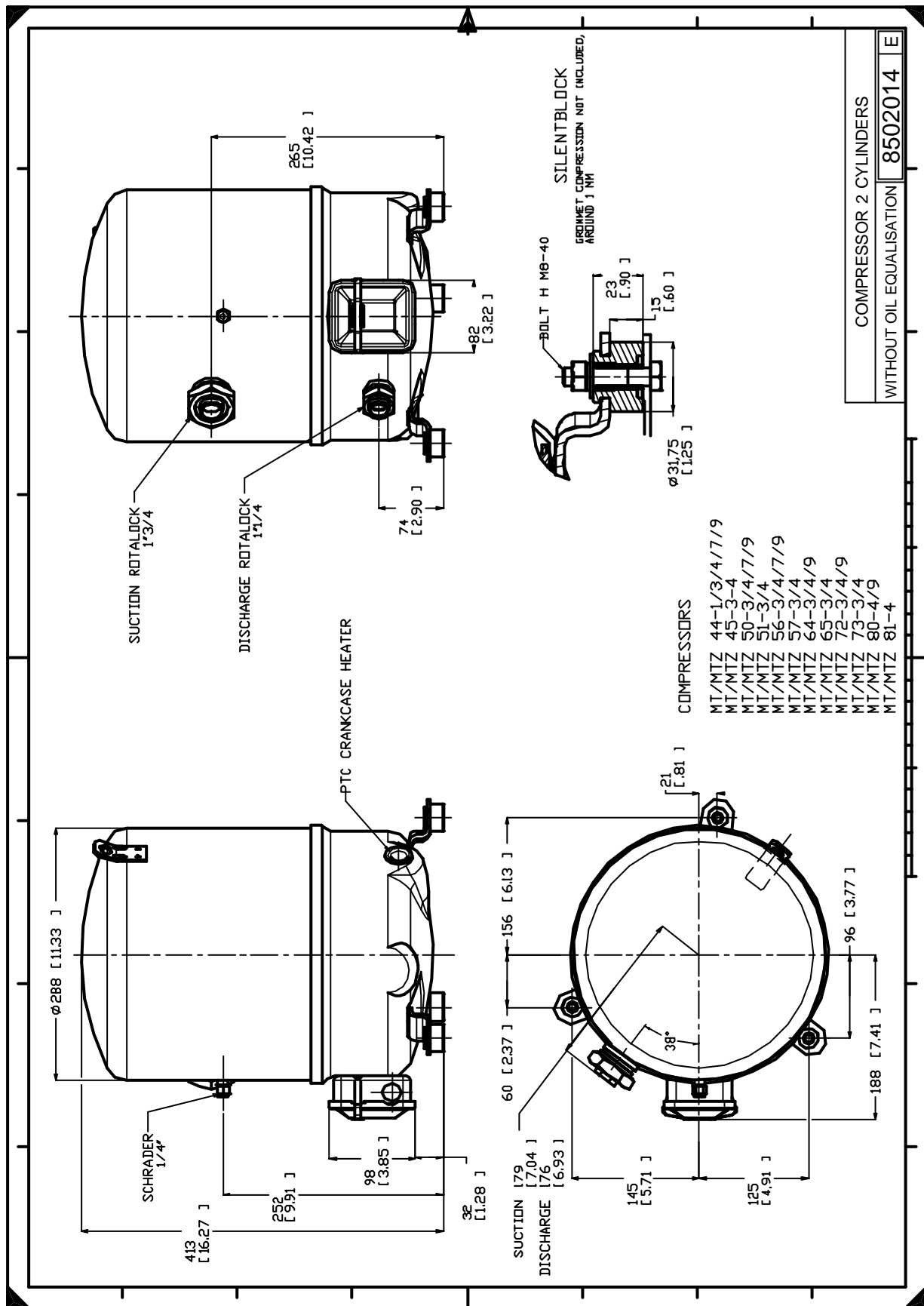
to: Evaporating temperature at dew point

tc: Condensing temperature at dew point

Rating conditions : Superheat = 11.1 K , Subcooling = 8.3 K

All performance data +/- 5%

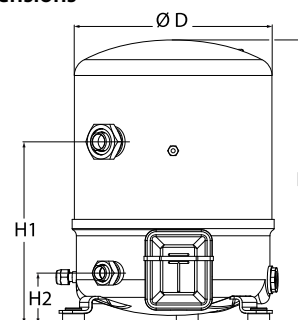
Danfoss can accept no responsibility for possible errors in catalogues, brochures and other printed material. Danfoss reserves the right to alter its products without notice. This also applies to products already on order provided that such alternations can be made without subsequential changes being necessary in specifications already agreed. All trademarks in this material are property of the respective companies. Danfoss, the Danfoss logotype and Maneurop are trademarks of Danfoss A/S. All rights reserved.



Danfoss can accept no responsibility for possible errors in catalogues, brochures and other printed material. Danfoss reserves the right to alter its products without notice. This also applies to products already on order provided that such alternations can be made without subsequential changes being necessary in specifications already agreed. All trademarks in this material are property of the respective companies. Danfoss, the Danfoss logotype and Maneurop are trademarks of Danfoss A/S. All rights reserved.

**General Characteristics**

Model number (on compressor nameplate)		<b>MT80HP4AVE</b>
Code number for Singlepack*		MT80-4VI
Code number for Industrial pack**		MT80-4VM
Drawing number		8502012g
Suction and discharge connections		Rotolock
Suction connection		1-3/4" Rotolock
Discharge connection		1-1/4" Rotolock
Suction connection with supplied sleeve		1-1/8" ODF
Discharge connection with supplied sleeve		3/4" ODF
Oil sight glass		Threaded
Oil equalisation connection		3/8" flare SAE
Oil drain connection		None
LP gauge port		Schrader
IPR valve		30 bar / 8 bar
Cylinders		2
Swept volume		135,78 cm <sup>3</sup> /rev
Displacement @ Nominal speed		23.6 m <sup>3</sup> /h @ 2900 rpm - 28.5 m <sup>3</sup> /h @ 3500 rpm
Net weight		40 kg
Oil charge		1,8 litre, Mineral - 160P
Maximum system test pressure Low Side / High side		25 bar(g) / 30 bar(g)
Maximum differential test pressure		30 bar
Maximum number of starts per hour		12
Refrigerant charge limit		5 kg
Approved refrigerants		R22, R417A-160PZ

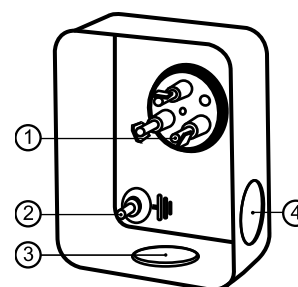
**Dimensions**


D=288 mm

H=413 mm

H1=265 mm

H2=74 mm

**Terminal box**


IP55 (with cable gland)

1: Spade connectors 1/4"

2: Earth M4-12

3: Knock-out Ø 21 mm (0.83")

4: Hole Ø 21 mm (0.83")

**Electrical Characteristics**

Nominal voltage	380-400V/3/50Hz - 460V/3/60Hz
Voltage range	340-440 V @ 50Hz - 414-506 V @ 60Hz
Winding resistance (between phases) +/- 7% at 25°C	1.9 Ω
Maximum Continuous Current (MCC)	18 A
Locked Rotor Amps (LRA)	80 A
Motor protection	Internal overload protector

**Recommended Installation torques**

Oil sight glass	50 Nm
Power connections / Earth connection	Nm / 2 Nm
Mounting bolts	15 Nm

**Parts shipped with compressor**

Mounting kit with grommets, bolts, nuts, sleeves and washers
Suction & Discharge solder sleeves, rotolock nuts and gaskets (shipped with rotolock version only)
Initial oil charge
Installation instructions

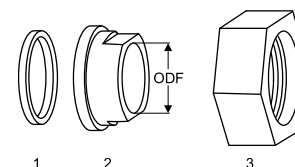
**Approvals** : CE certified, UL certified (file SA6873), -

\*Singlepack: Compressor in cardboard box

\*\*Industrial pack: 6 Unboxed compressors on pallet (order per multiples of 6)

**Rotolock accessories, suction side**
**Code no.**

Solder sleeve, P02 (1-3/4" Rotolock, 1-1/8" ODF)	8153004
Angle adapter, C02 (1-3/4" Rotolock, 1-1/8" ODF)	8168005
Rotolock valve, V02 (1-3/4" Rotolock, 1-1/8" ODF)	8168028
Gasket, 1-3/4"	8156132

**Gaskets, sleeves and nuts**


- 1: Gasket
- 2: Solder sleeve
- 3: Rotolock nut

**Rotolock accessories, discharge side**
**Code no.**

Solder sleeve, P04 (1-1/4" Rotolock, 3/4" ODF)	8153008
Angle adapter, C04 (1-1/4" Rotolock, 3/4" ODF)	8168006
Rotolock valve, V04 (1-1/4" Rotolock, 3/4" ODF)	8168029
Gasket, 1-1/4"	8156131

**Rotolock accessories, sets**
**Code no.**

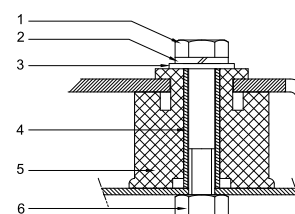
Angle adapter set, C02 (1-3/4"~1-1/8"), C04 (1-1/4"~3/4")	7703014
Valve set, V02 (1-3/4"~1-1/8"), V04 (1-1/4"~3/4")	7703009
Gasket set, 1", 1-1/4", 1-3/4", OSG gaskets black & white	8156009

**Oil / lubricants**
**Code no.**

Mineral oil, 160P, 2 litre can	7754001
Mineral oil, 160P, 5 litre can	7754002

**Crankcase heaters**
**Code no.**

PTC heater 27W	120Z0459
Belt type crankcase heater, 65 W, 230 V, CE mark, UL	7773107
Belt type crankcase heater, 65 W, 400 V, CE mark, UL	7773117
Belt type crankcase heater, 65 W, 460 V, CE mark, UL	120Z0466

**Mounting kit**


- 1: Bolt (3x)
- 2: Lock washer (3x)
- 3: Flat washer (3x)
- 4: Sleeve (3x)
- 5: Grommet (3x)
- 6: Nut (3x)

**Miscellaneous accessories**
**Code no.**

Electronic soft start kit, MCI 15 C	7705006
Soft start kit with statoric resistors, prewired box, SCR01	7702003
Acoustic hood for 2 cylinder compressor	7755002
Oil equalisation nut	8153127

**Spare parts**
**Code no.**

Mounting kit for 1 and 2 cylinder compressor, including 3 grommets, 3 bolts	8156001
Oil sight glass with gaskets (black & white)	8156019
Gasket for oil sight glass (black chloroprene)	8156145
Service kit for terminal box 80 x 96 mm, including 1 cover, 1 clamp	8156134



**Performance data at 50 Hz, EN 12900 rating conditions**
**R22**

Cond. temp. in °C (tc)	Evaporating temperature in °C (to)							
	-25	-20	-15	-10	-5	0	5	10

**Cooling capacity in W**

30	5 199	7 162	9 479	12 189	15 329	18 939	23 058	27 724	32 977
35	4 617	6 510	8 736	11 333	14 340	17 795	21 738	26 206	31 239
40	4 106	5 916	8 038	10 510	13 371	16 658	20 412	24 670	29 471
45	3 671	5 383	7 387	9 719	12 419	15 525	19 074	23 106	27 659
50	-	4 928	6 801	8 982	11 509	14 421	17 754	21 549	25 843
55	-	-	6 285	8 301	10 642	13 345	16 449	19 992	24 013
60	-	-	-	7 681	9 822	12 303	15 163	18 440	22 172
65	-	-	-	-	9 070	11 317	13 922	16 921	20 353

**Power input in W**

30	2 936	3 341	3 745	4 138	4 509	4 848	5 144	5 389	5 570
35	3 097	3 516	3 937	4 351	4 748	5 117	5 448	5 730	5 954
40	3 271	3 705	4 147	4 585	5 011	5 412	5 780	6 104	6 373
45	3 459	3 912	4 377	4 843	5 299	5 737	6 144	6 512	6 829
50	-	4 138	4 628	5 124	5 615	6 091	6 542	6 956	7 324
55	-	-	4 903	5 432	5 960	6 478	6 973	7 438	7 860
60	-	-	-	5 768	6 336	6 897	7 442	7 958	8 437
65	-	-	-	-	6 744	7 352	7 948	8 520	9 058

**Current consumption in A**

30	6.01	6.43	6.88	7.35	7.81	8.25	8.65	8.98	9.24
35	6.18	6.62	7.11	7.61	8.12	8.61	9.07	9.47	9.80
40	6.36	6.84	7.36	7.91	8.47	9.02	9.54	10.02	10.43
45	6.56	7.08	7.64	8.24	8.86	9.48	10.07	10.63	11.14
50	-	7.35	7.96	8.62	9.31	10.00	10.67	11.32	11.92
55	-	-	8.32	9.05	9.81	10.58	11.34	12.08	12.78
60	-	-	-	9.53	10.37	11.22	12.08	12.93	13.74
65	-	-	-	-	10.99	11.94	12.90	13.86	14.78

**Mass flow in kg/h**

30	113	154	201	255	317	386	465	553	652
35	105	146	193	247	308	378	456	544	642
40	97	138	185	239	299	368	446	533	630
45	91	131	178	230	290	358	434	520	616
50	-	126	171	223	281	348	422	506	600
55	-	-	166	216	273	338	410	492	584
60	-	-	-	211	266	328	399	478	567
65	-	-	-	-	261	320	388	464	550

**Coefficient of performance (C.O.P.)**

30	1.77	2.14	2.53	2.95	3.40	3.91	4.48	5.14	5.92
35	1.49	1.85	2.22	2.60	3.02	3.48	3.99	4.57	5.25
40	1.26	1.60	1.94	2.29	2.67	3.08	3.53	4.04	4.62
45	1.06	1.38	1.69	2.01	2.34	2.71	3.10	3.55	4.05
50	-	1.19	1.47	1.75	2.05	2.37	2.71	3.10	3.53
55	-	-	1.28	1.53	1.79	2.06	2.36	2.69	3.06
60	-	-	-	1.33	1.55	1.78	2.04	2.32	2.63
65	-	-	-	-	1.34	1.54	1.75	1.99	2.25

**Nominal performance at to = 5 °C, tc = 50 °C**

Cooling capacity	17 754	W
Power input	6 542	W
Current consumption	10.67	A
Mass flow	422	kg/h
C.O.P.	2.71	

**Pressure switch settings**

Maximum HP switch setting	27.7	bar(g)
Minimum LP switch setting	0.2	bar(g)
LP pump down setting	0.9	bar(g)

**Sound power data**

Sound power level	0	dB(A)
With acoustic hood	0	dB(A)

to: Evaporating temperature at dew point

tc: Condensing temperature at dew point

Rating conditions : Superheat = 10 K , Subcooling = 0 K

All performance data +/- 5%

Danfoss can accept no responsibility for possible errors in catalogues, brochures and other printed material. Danfoss reserves the right to alter its products without notice. This also applies to products already on order provided that such alternations can be made without subsequential changes being necessary in specifications already agreed. All trademarks in this material are property of the respective companies. Danfoss, the Danfoss logotype and Maneurop are trademarks of Danfoss A/S. All rights reserved.

**Performance data at 50 Hz, ARI rating conditions**
**R22**

Cond. temp. in °C (tc)	Evaporating temperature in °C (to)							
	-25	-20	-15	-10	-5	0	5	10

**Cooling capacity in W**

30	5 520	7 599	10 050	12 912	16 227	20 035	24 375	29 289	34 816
35	4 921	6 933	9 295	12 048	15 232	18 888	23 055	27 775	33 086
40	4 393	6 323	8 583	11 213	14 252	17 742	21 722	26 233	31 315
45	3 947	5 782	7 925	10 417	13 298	16 607	20 386	24 675	29 514
50	-	5 319	7 332	9 672	12 380	15 496	19 060	23 112	27 693
55	-	-	6 815	8 989	11 510	14 418	17 753	21 554	25 864
60	-	-	-	8 379	10 699	13 385	16 476	20 014	24 037
65	-	-	-	-	9 958	12 407	15 241	18 500	22 225

**Power input in W**

30	2 936	3 341	3 745	4 138	4 509	4 848	5 144	5 389	5 570
35	3 097	3 516	3 937	4 351	4 748	5 117	5 448	5 730	5 954
40	3 271	3 705	4 147	4 585	5 011	5 412	5 780	6 104	6 373
45	3 459	3 912	4 377	4 843	5 299	5 737	6 144	6 512	6 829
50	-	4 138	4 628	5 124	5 615	6 091	6 542	6 956	7 324
55	-	-	4 903	5 432	5 960	6 478	6 973	7 438	7 860
60	-	-	-	5 768	6 336	6 897	7 442	7 958	8 437
65	-	-	-	-	6 744	7 352	7 948	8 520	9 058

**Current consumption in A**

30	6.01	6.43	6.88	7.35	7.81	8.25	8.65	8.98	9.24
35	6.18	6.62	7.11	7.61	8.12	8.61	9.07	9.47	9.80
40	6.36	6.84	7.36	7.91	8.47	9.02	9.54	10.02	10.43
45	6.56	7.08	7.64	8.24	8.86	9.48	10.07	10.63	11.14
50	-	7.35	7.96	8.62	9.31	10.00	10.67	11.32	11.92
55	-	-	8.32	9.05	9.81	10.58	11.34	12.08	12.78
60	-	-	-	9.53	10.37	11.22	12.08	12.93	13.74
65	-	-	-	-	10.99	11.94	12.90	13.86	14.78

**Mass flow in kg/h**

30	113	153	200	254	315	384	462	550	648
35	104	145	192	246	307	376	453	541	638
40	96	137	184	237	298	366	443	530	626
45	90	131	177	229	289	356	432	517	612
50	-	125	170	222	280	346	420	503	597
55	-	-	166	215	272	336	408	489	580
60	-	-	-	210	265	326	396	475	564
65	-	-	-	-	259	318	386	462	547

**Coefficient of performance (C.O.P.)**

30	1.88	2.27	2.68	3.12	3.60	4.13	4.74	5.44	6.25
35	1.59	1.97	2.36	2.77	3.21	3.69	4.23	4.85	5.56
40	1.34	1.71	2.07	2.45	2.84	3.28	3.76	4.30	4.91
45	1.14	1.48	1.81	2.15	2.51	2.89	3.32	3.79	4.32
50	-	1.29	1.58	1.89	2.20	2.54	2.91	3.32	3.78
55	-	-	1.39	1.65	1.93	2.23	2.55	2.90	3.29
60	-	-	-	1.45	1.69	1.94	2.21	2.51	2.85
65	-	-	-	-	1.48	1.69	1.92	2.17	2.45

**Nominal performance at to = 7.2 °C, tc = 54.4 °C**

Cooling capacity	19 534	W
Power input	7 126	W
Current consumption	11.58	A
Mass flow	444	kg/h
C.O.P.	2.74	

**Pressure switch settings**

Maximum HP switch setting	27.7	bar(g)
Minimum LP switch setting	0.2	bar(g)
LP pump down setting	0.9	bar(g)

**Sound power data**

Sound power level	0	dB(A)
With acoustic hood	0	dB(A)

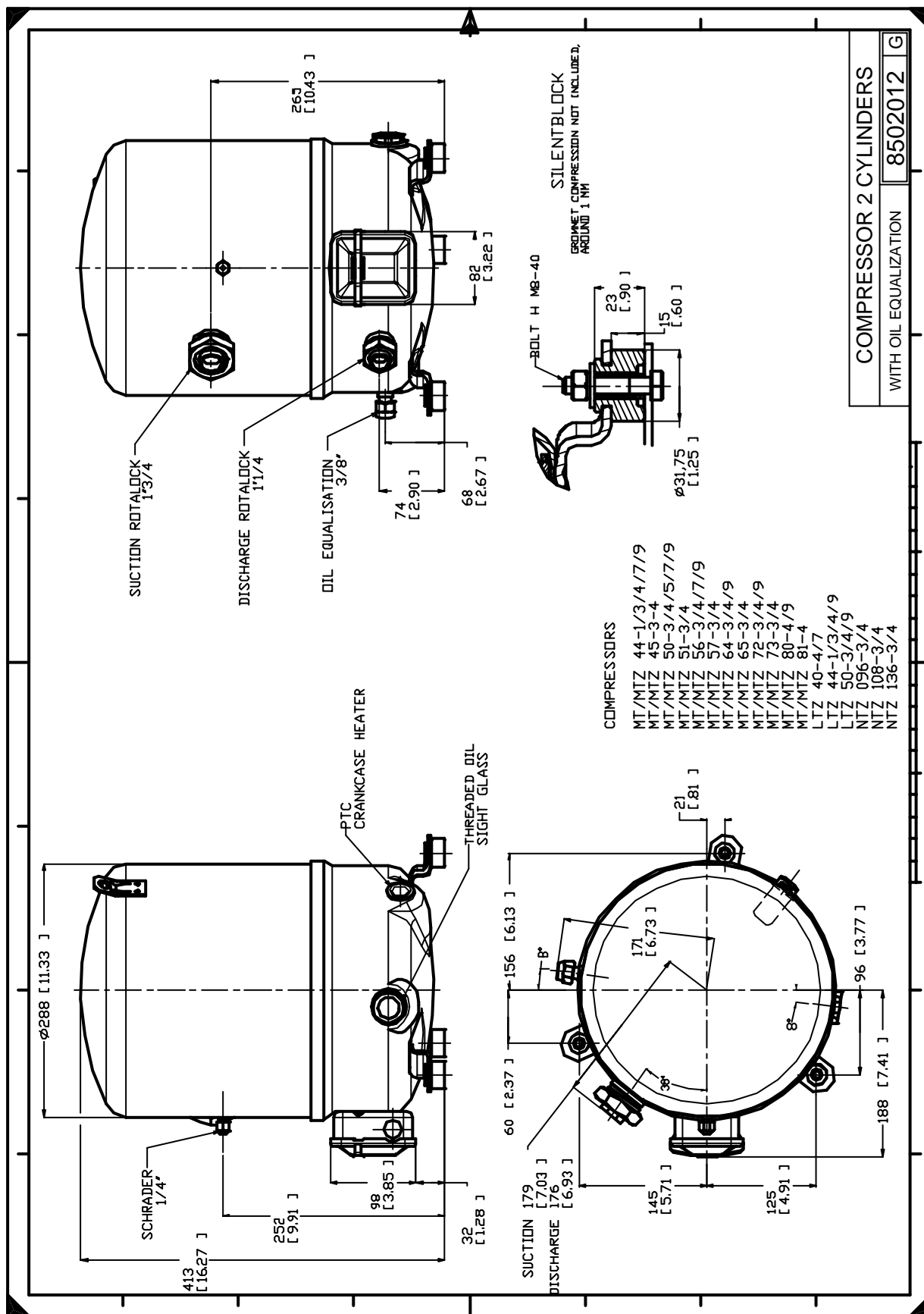
to: Evaporating temperature at dew point

tc: Condensing temperature at dew point

Rating conditions : Superheat = 11.1 K , Subcooling = 8.3 K

All performance data +/- 5%

Danfoss can accept no responsibility for possible errors in catalogues, brochures and other printed material. Danfoss reserves the right to alter its products without notice. This also applies to products already on order provided that such alternations can be made without subsequential changes being necessary in specifications already agreed. All trademarks in this material are property of the respective companies. Danfoss, the Danfoss logotype and Maneurop are trademarks of Danfoss A/S. All rights reserved.



Danfoss can accept no responsibility for possible errors in catalogues, brochures and other printed material. Danfoss reserves the right to alter its products without notice. This also applies to products already on order provided that such alternations can be made without consequential changes being necessary in specifications already agreed. All trademarks in this material are property of the respective companies. Danfoss, the Danfoss logotype and Maneurop are trademarks of Danfoss A/S. All rights reserved.