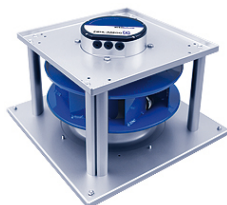




1



GR45C-ZID.GG.1R | 116783/H01 | Portfolio STD-WW | C ECblue

Technical Description

Ventilation unit GR..C-ECblue for vertical airflow**GR25C - GR63C:**

- Bolted supporting structure made of galvanized sheet steel
- Galvanized components can be coated with epoxy-/ polyester powder coating RAL 7032 for a surcharge
- Ventilation data (fan curve) and motor allocation equivalent to ER..Cpro-ECblue
- Inlet ring designed for optimum air flow, made of galvanised steel sheet with measuring device for determination of flow rate
- Installation position vertical motor shaftVu = impeller at the bottomVo = impeller at the top
- Module decoupled by rubber dampers

Ventilation unit GR..C-ECblue for horizontal airflow

- Bolted supporting structure made of galvanized sheet steel
- Galvanized components can be coated with epoxy-/ polyester powder coating RAL 7032 for a surcharge
- Sizes 250 ... 630 mm
- Ventilation data (fan curve) and motor allocation equivalent to ER..C-ECblue
- Inlet ring designed for optimum air flow, made of galvanised steel sheet with measuring device for determination of flow rate
- Installation position horizontal motor shaft

Standard design with ECblue motor and integrated electronics**Material of impeller:**

- Aluminium

Mains voltage motor size B_:

- 1~ 200...277 V; 50/60 Hz

Mains voltage motor size D_:

- 1~ 200...277 V; 50/60 Hz
- 3~ 200...240 V; 50/60 Hz
- 3~ 380...480 V; 50/60 Hz

Mains voltage motor size G_:

- 3~ 200...240 V; 50/60 Hz

FANselect



- 3~ 380...480 V; 50/60 Hz

Thermal class:

- THCL155

Thermal protection:

- Protection with active temperature management

Protection:

- IP55

Coating:

- Motor painted in RAL5002

Controller (only motor size B₁):

- Activation via external speed setting 0-10 V / PWM, Communication interface on request
- Standard cable length: 60 cm

Controller (only motor size D₁, G₁):

- BASIC: Activation via external speed setting 0-10 V / PWM Art. no. ER- and GR-module in basic version
- PREMIUM: Integrated control functionality, Communication interface on request

Cable glands:

- Motor size D: 3 x M16 x 1.5
- Motor size G: 3 x M20 x 1.5

Ambient temperature:

- Minimum permissible ambient temperature: -20 °C*
- Maximum permissible ambient temperature: 40 °C or see data sheet

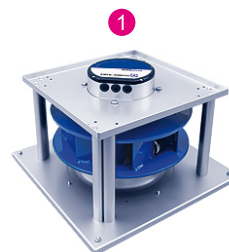
***Continuous operation with occasional starts (S1) according to DIN EN 60034-1: 2011-02. Occasional starting between -35 ° C and -25 ° C is permissible. Permanent operation below -25 ° C only possible with special bearings for refrigeration applications on request.**



fan data

15/12/2021

version FANselect V 1.01 (211209), AMCA V 1.03 September, 2021 / 1.21.12.09 | 53567 | (user ZAFS43567)



type	GR45C-ZID.GG.1R
article no.	116783/H01 Portfolio STD-WW

technical data

motor	ECblue
Efficiency class	IE5
mains supply	- 3~ 400V 50Hz
ambient temperature, max. limit (t_r)	°C 40
efficiency grade η_{statA}	% 62,4
efficiency grade N_{actual} N_{target}	65,1 62
ErP-conformity	2015 EC controller integrated
grille influence	no

fan data

SFP-class SFP-value (P_{SFP})	- Ws/m ³	4 1585
airflow volume (q_v)	ft ³ /min	6356.4
air velocity	ft/s	54.72
pressure, stat. (p_{sF}) tot. (p_F)	in.wg.	3.022 3.670
electrical power input (P_{sys})	W	4753
system eff., stat. ($\eta_{sF,sys}$) tot. ($\eta_{F,sys}$)	%	47.5 57.7
fan speed (n) max. (n_{max})	rpm	2626 2630
fan speed, set value (% n_{max})	%	100
frequency (f_{BP}) (f_{max})	Hz	50 60
voltage (U_{DP})	V	400
current (I_{DP})	A	7.20
acoustics, suction side ($L_{w(A),5}$) ($L_{w,5}$)	dB	95 98
acoustics, pressure side ($L_{w(A),6}$) ($L_{w,6}$)	dB	100 103
dimensions (w x h x d)	in	24.80 x 24.80 x 15.71
product weight (m_{pr})	lb	92.6
k-factor nozzle pres. (k)	-	197
differential pres. nozzle ($p_{sF \text{ nozzle}}$)	Pa	3005

PF:PF_50; Ano:116783; STol:+-10 %



FANselect



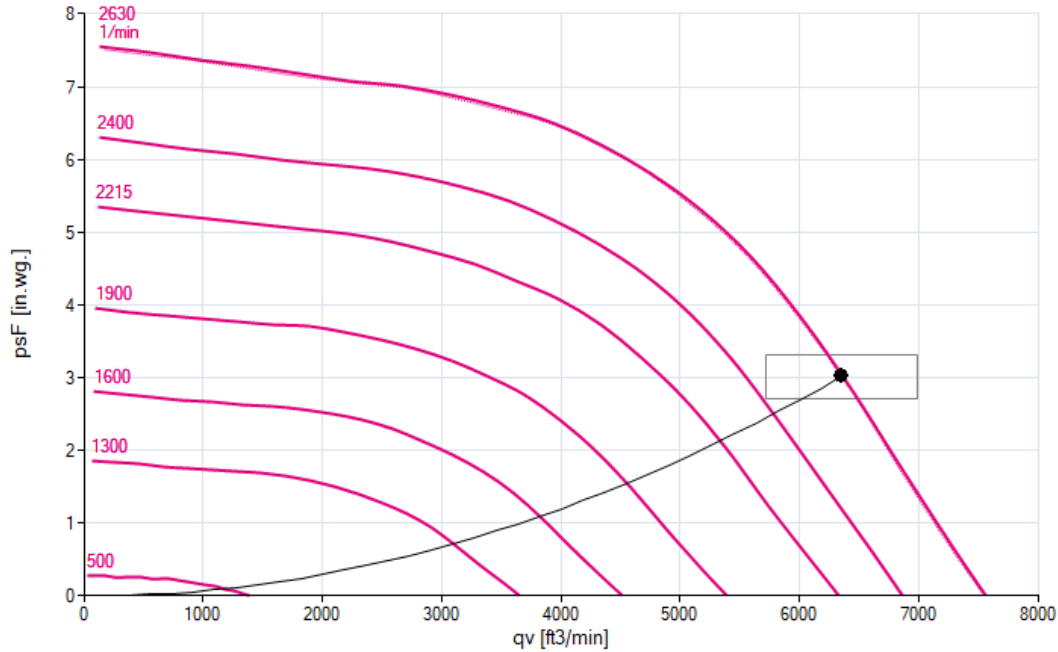
performance curve / acoustics

15/12/2021

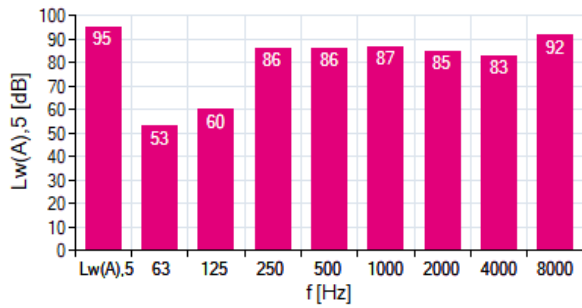
version FANselect V 1.01 (211209), AMCA V 1.03 September, 2021 / 1.21.12.09 | 53567 | (user ZAFS43567)

- 1 **GR45C-ZID.GG.1R** measured in standard nozzle in installation type A according to ISO 5801
 116783/H01 | Portfolio measurement density 0.072 [lbs/ft³]
 STD-WWW

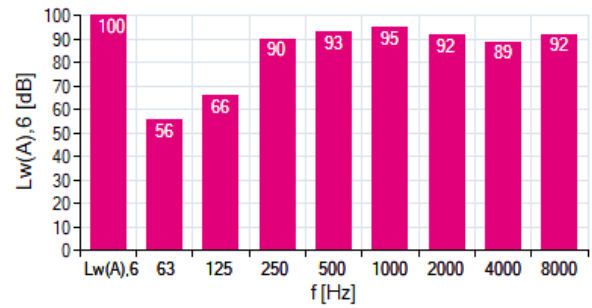
air performance p_{sF}



acoustics (L_{w(A),5})



acoustics (L_{w(A),6})



1 GR45C-ZID.GG.1R

f [Hz]	sum	63	125	250	500	1000	2000	4000	8000
L _{w(A),5}	95	53	60	86	86	87	85	83	92
L _{w,5}	98	80	76	93	89	87	84	82	94

f [Hz]	sum	63	125	250	500	1000	2000	4000	8000
L _{w(A),6}	100	56	66	90	93	95	92	89	92
L _{w,6}	103	83	81	97	96	96	91	88	95

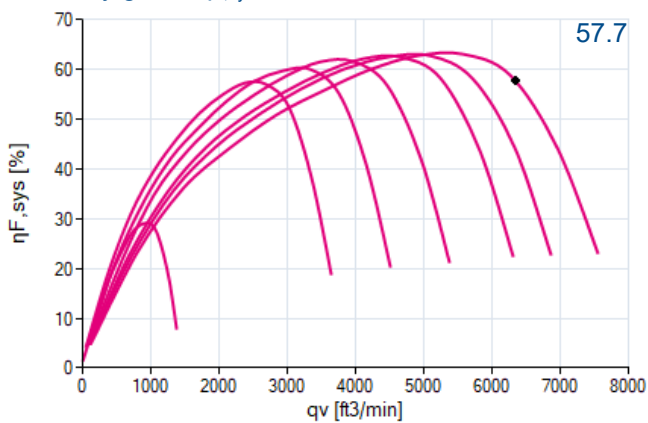
FANselect



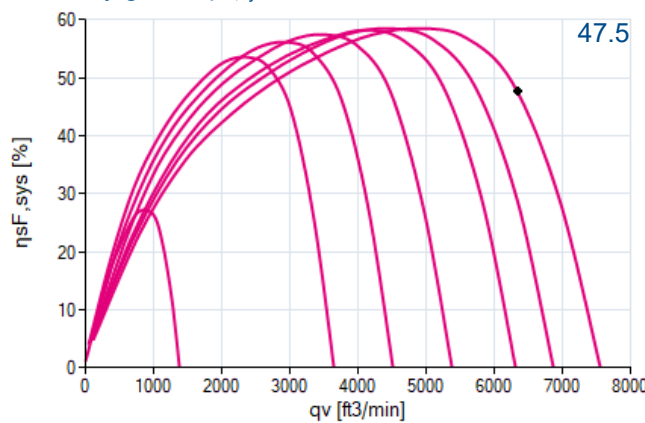
efficiency grade / power input 15/12/2021
version FANselect V 1.01 (211209), AMCA V 1.03 September, 2021 / 1.21.12.09 | 53567 | (user ZAFS43567)

① **GR45C-ZID.GG.1R** measured in standard nozzle in installation type A according to ISO 5801
116783/H01 | Portfolio measurement density 0.072 [lbs/ft³]
STD-WW

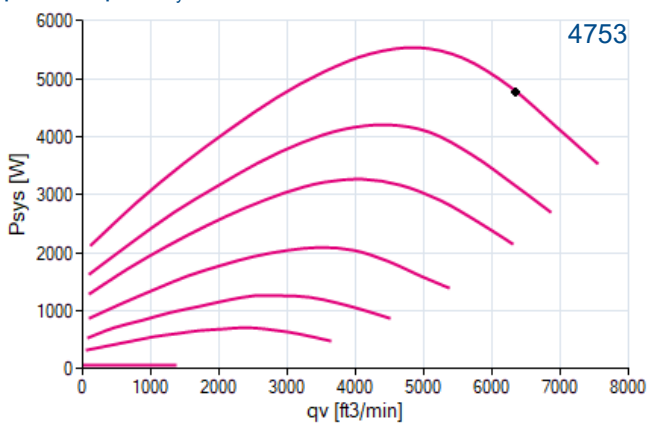
efficiency grade $\eta_{F,sys}$



efficiency grade $\eta_{SF,sys}$



power input P_{sys}



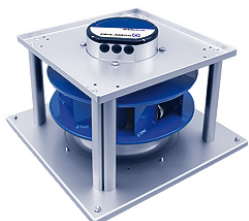


nominal values

15/12/2021

version FANselect V 1.01 (211209), AMCA V 1.03 September, 2021 / 1.21.12.09 | 53567 | (user ZAFS43567)

1



GR45C-ZID.GG.1R

116783/H01

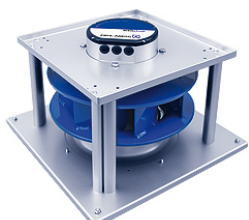
3~ 380-480V 50Hz P1 5.60kW
 8.80-7.00A 2630/MIN 40°C
 3~ 380-480V 60Hz P1 5.60kW
 8.80-7.00A 2630/MIN 40°C
 IP55 THCL155

drawing

15/12/2021

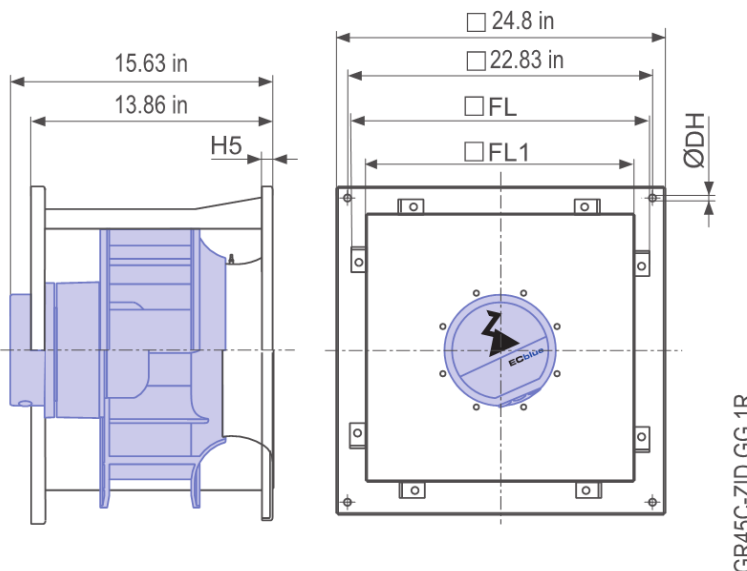
version FANselect V 1.01 (211209), AMCA V 1.03 September, 2021 / 1.21.12.09 | 53567 | (user ZAFS43567)

1



GR45C-ZID.GG.1R

116783/H01



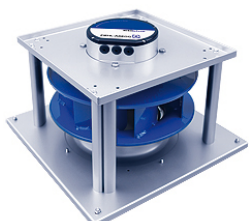
GR45C-ZID.GG.1R

wiring diagram

15/12/2021

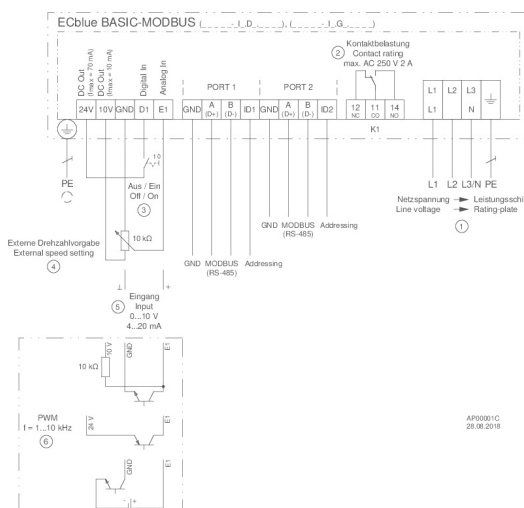
version FANselect V 1.01 (211209), AMCA V 1.03 September, 2021 / 1.21.12.09 | 53567 | (user ZAFS43567)

1



GR45C-ZID.GG.1R

116783/H01

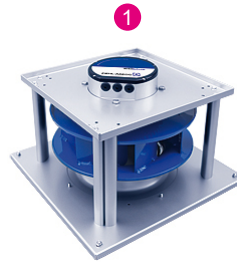




system components

15/12/2021

version FANselect V 1.01 (211209), AMCA V 1.03 September, 2021 / 1.21.12.09 | 53567 | (user ZAFS43567)



type	GR45C-ZID.GG.1R
article no.	116783/H01