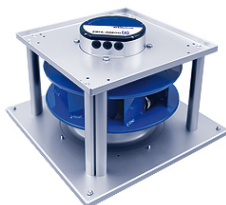




1



GR56C-ZID.GG.1R | 117390/H01 | Portfolio STD-WW | C ECblue

## Technical Description

**Ventilation unit GR..C-ECblue for vertical airflow****GR25C - GR63C:**

- Bolted supporting structure made of galvanized sheet steel
- Galvanized components can be coated with epoxy-/ polyester powder coating RAL 7032 for a surcharge
- Ventilation data (fan curve) and motor allocation equivalent to ER..Cpro-ECblue
- Inlet ring designed for optimum air flow, made of galvanised steel sheet with measuring device for determination of flow rate
- Installation position vertical motor shaftVu = impeller at the bottomVo = impeller at the top
- Module decoupled by rubber dampers

**Ventilation unit GR..C-ECblue for horizontal airflow**

- Bolted supporting structure made of galvanized sheet steel
- Galvanized components can be coated with epoxy-/ polyester powder coating RAL 7032 for a surcharge
- Sizes 250 ... 630 mm
- Ventilation data (fan curve) and motor allocation equivalent to ER..C-ECblue
- Inlet ring designed for optimum air flow, made of galvanised steel sheet with measuring device for determination of flow rate
- Installation position horizontal motor shaft

**Standard design with ECblue motor and integrated electronics****Material of impeller:**

- Aluminium

**Mains voltage motor size B\_:**

- 1~ 200...277 V; 50/60 Hz

**Mains voltage motor size D\_:**

- 1~ 200...277 V; 50/60 Hz
- 3~ 200...240 V; 50/60 Hz
- 3~ 380...480 V; 50/60 Hz

**Mains voltage motor size G\_:**

- 3~ 200...240 V; 50/60 Hz

# FANselect



- 3~ 380...480 V; 50/60 Hz

**Thermal class:**

- THCL155

**Thermal protection:**

- Protection with active temperature management

**Protection:**

- IP55

**Coating:**

- Motor painted in RAL5002

**Controller (only motor size B<sub>1</sub>):**

- Activation via external speed setting 0-10 V / PWM, Communication interface on request
- Standard cable length: 60 cm

**Controller (only motor size D<sub>1</sub>, G<sub>1</sub>):**

- BASIC: Activation via external speed setting 0-10 V / PWM Art. no. ER- and GR-module in basic version
- PREMIUM: Integrated control functionality, Communication interface on request

**Cable glands:**

- Motor size D: 3 x M16 x 1.5
- Motor size G: 3 x M20 x 1.5

**Ambient temperature:**

- Minimum permissible ambient temperature: -20 °C\*
- Maximum permissible ambient temperature: 40 °C or see data sheet

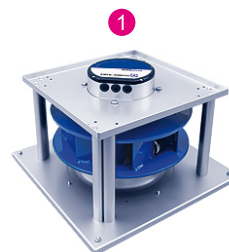
**\*Continuous operation with occasional starts (S1) according to DIN EN 60034-1: 2011-02. Occasional starting between -35 ° C and -25 ° C is permissible. Permanent operation below -25 ° C only possible with special bearings for refrigeration applications on request.**



## fan data

16/12/2021

version FANselect V 1.01 (211209), AMCA V 1.03 September, 2021 / 1.21.12.09 | 53567 | (user ZAFS43567)



type	GR56C-ZID.GG.1R
article no.	117390/H01   Portfolio STD-WW

## technical data

motor	ECblue
Efficiency class	IE5
mains supply	- 3~ 400V 50Hz
ambient temperature, max. limit ( $t_r$ )	°C 55
efficiency grade $\eta_{statA}$	% 66,8
efficiency grade $N_{actual}$   $N_{target}$	71,5   62
ErP-conformity	2015   EC controller integrated
grille   influence	no

## fan data

SFP-class   SFP-value ( $P_{SFP}$ )	-   Ws/m <sup>3</sup>	3   1206
airflow volume ( $q_v$ )	ft <sup>3</sup> /min	6237.6
air velocity	ft/s	34.45
pressure, stat. ( $p_{sF}$ )   tot. ( $p_F$ )	in.wg.	2.983   3.244
electrical power input ( $P_{sys}$ )	W	3550
system eff., stat. ( $\eta_{sF,sys}$ )   tot. ( $\eta_{F,sys}$ )	%	61.6   67.0
fan speed ( $n$ )   max. ( $n_{max}$ )	rpm	1575   1580
fan speed, set value (% $n_{max}$ )	%	100
frequency ( $f_{BP}$ )   ( $f_{max}$ )	Hz	50   60
voltage ( $U_{DP}$ )	V	400
current ( $I_{DP}$ )	A	5.48
acoustics, suction side ( $L_{w(A),5}$ )   ( $L_{w,5}$ )	dB	83   88
acoustics, pressure side ( $L_{w(A),6}$ )   ( $L_{w,6}$ )	dB	89   94
dimensions (w x h x d)	in	28.74 x 28.74 x 18.31
product weight ( $m_{pr}$ )	lb	134.5
k-factor nozzle pres. (k)	-	308
differential pres. nozzle ( $p_{sF \text{ nozzle}}$ )	Pa	1184

PF:PF\_50; Ano:117390; STol:+-10 %





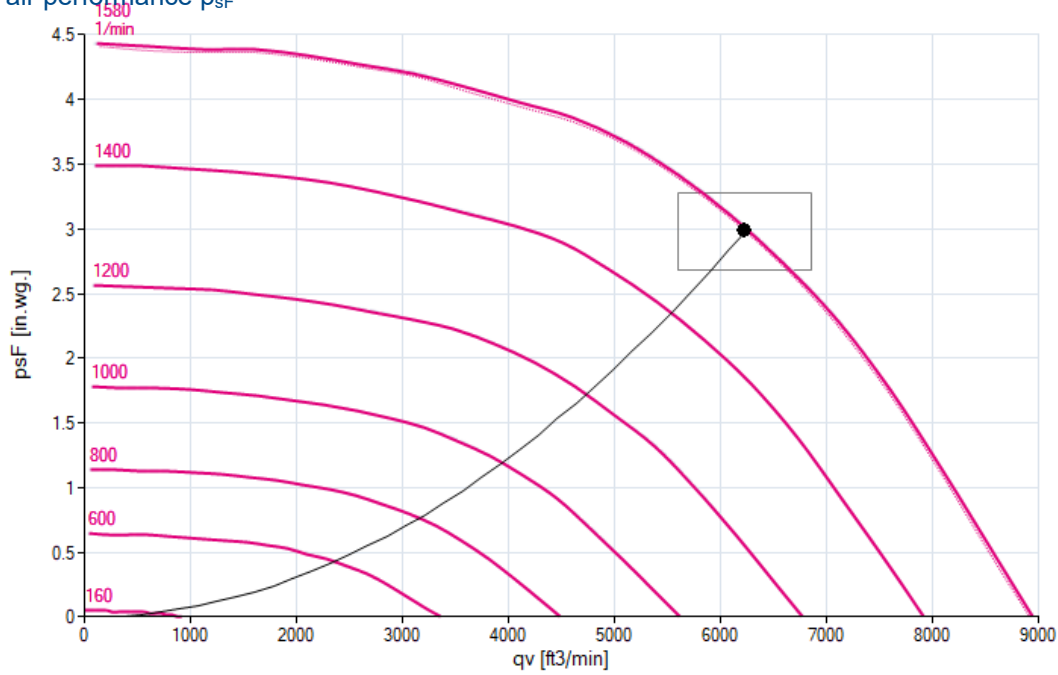
performance curve / acoustics

16/12/2021

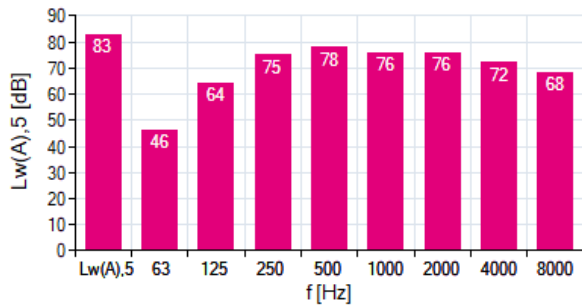
version FANselect V 1.01 (211209), AMCA V 1.03 September, 2021 / 1.21.12.09 | 53567 | (user ZAFS43567)

- 1 **GR56C-ZID.GG.1R** measured in standard nozzle in installation type A according to ISO 5801  
 117390/H01 | Portfolio measurement density 0.072 [lbs/ft<sup>3</sup>]  
 STD-WWW

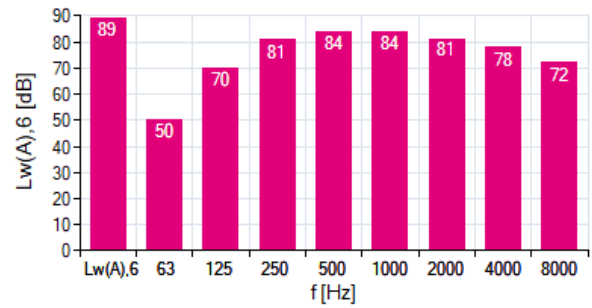
air performance p<sub>sF</sub>



acoustics (L<sub>w(A),5</sub>)



acoustics (L<sub>w(A),6</sub>)



1 GR56C-ZID.GG.1R									
f [Hz]	sum	63	125	250	500	1000	2000	4000	8000
L <sub>w(A),5</sub>	83	46	64	75	78	76	76	72	68
L <sub>w,5</sub>	88	73	78	85	82	76	75	71	69

f [Hz]	sum	63	125	250	500	1000	2000	4000	8000
L <sub>w(A),6</sub>	89	50	70	81	84	84	81	78	72
L <sub>w,6</sub>	94	76	83	91	87	84	80	77	73

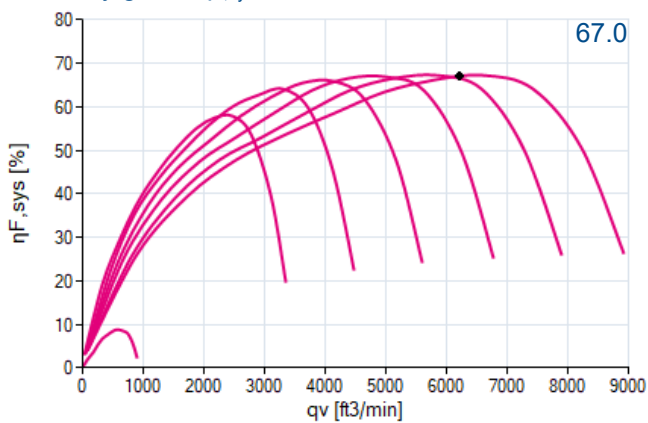
# FANselect



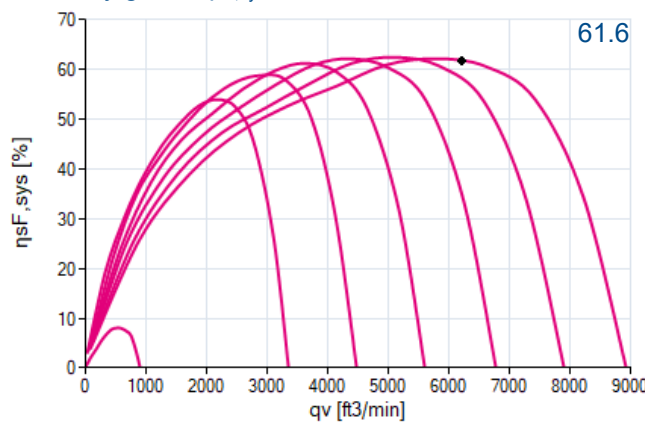
efficiency grade / power input 16/12/2021  
version FANselect V 1.01 (211209), AMCA V 1.03 September, 2021 / 1.21.12.09 | 53567 | (user ZAFS43567)

**1** **GR56C-ZID.GG.1R** measured in standard nozzle in installation type A according to ISO 5801  
 117390/H01 | Portfolio measurement density 0.072 [lbs/ft<sup>3</sup>]  
 STD-WW

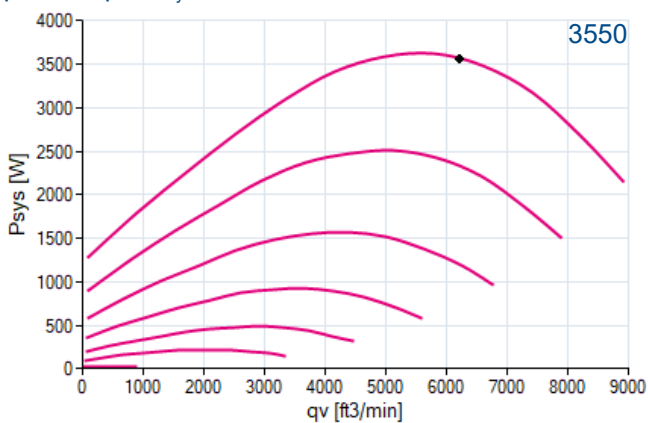
efficiency grade  $\eta_{F,sys}$



efficiency grade  $\eta_{SF,sys}$



power input  $P_{sys}$



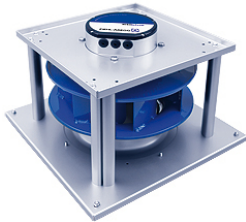


## nominal values

16/12/2021

version FANselect V 1.01 (211209), AMCA V 1.03 September, 2021 / 1.21.12.09 | 53567 | (user ZAFS43567)

1



**GR56C-ZID.GG.1R**  
117390/H01

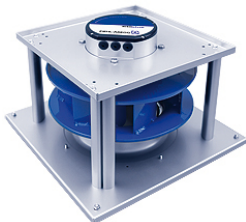
3~ 380-480V 50Hz P1 3.60kW  
5.90-4.70A 1580/MIN 55°C  
3~ 380-480V 60Hz P1 3.60kW  
5.90-4.70A 1580/MIN 55°C  
IP55 THCL155

## drawing

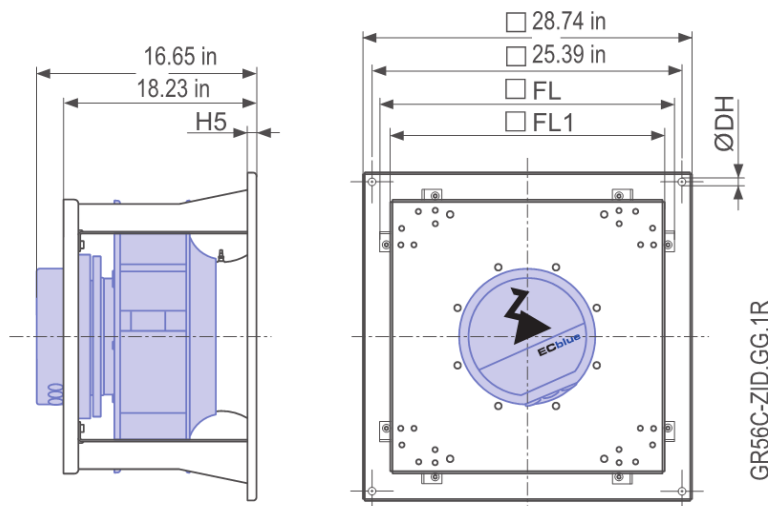
16/12/2021

version FANselect V 1.01 (211209), AMCA V 1.03 September, 2021 / 1.21.12.09 | 53567 | (user ZAFS43567)

1



**GR56C-ZID.GG.1R**  
117390/H01

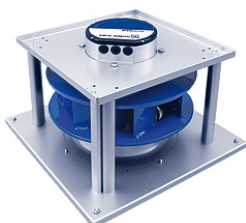


## wiring diagram

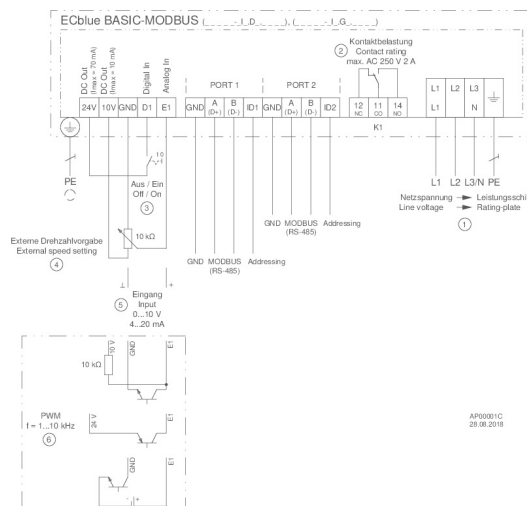
16/12/2021

version FANselect V 1.01 (211209), AMCA V 1.03 September, 2021 / 1.21.12.09 | 53567 | (user ZAFS43567)

1



**GR56C-ZID.GG.1R**  
117390/H01

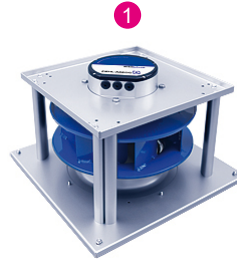




## system components

16/12/2021

version FANselect V 1.01 (211209), AMCA V 1.03 September, 2021 / 1.21.12.09 | 53567 | (user ZAFS43567)



type	GR56C-ZID.GG.1R
article no.	117390/H01