

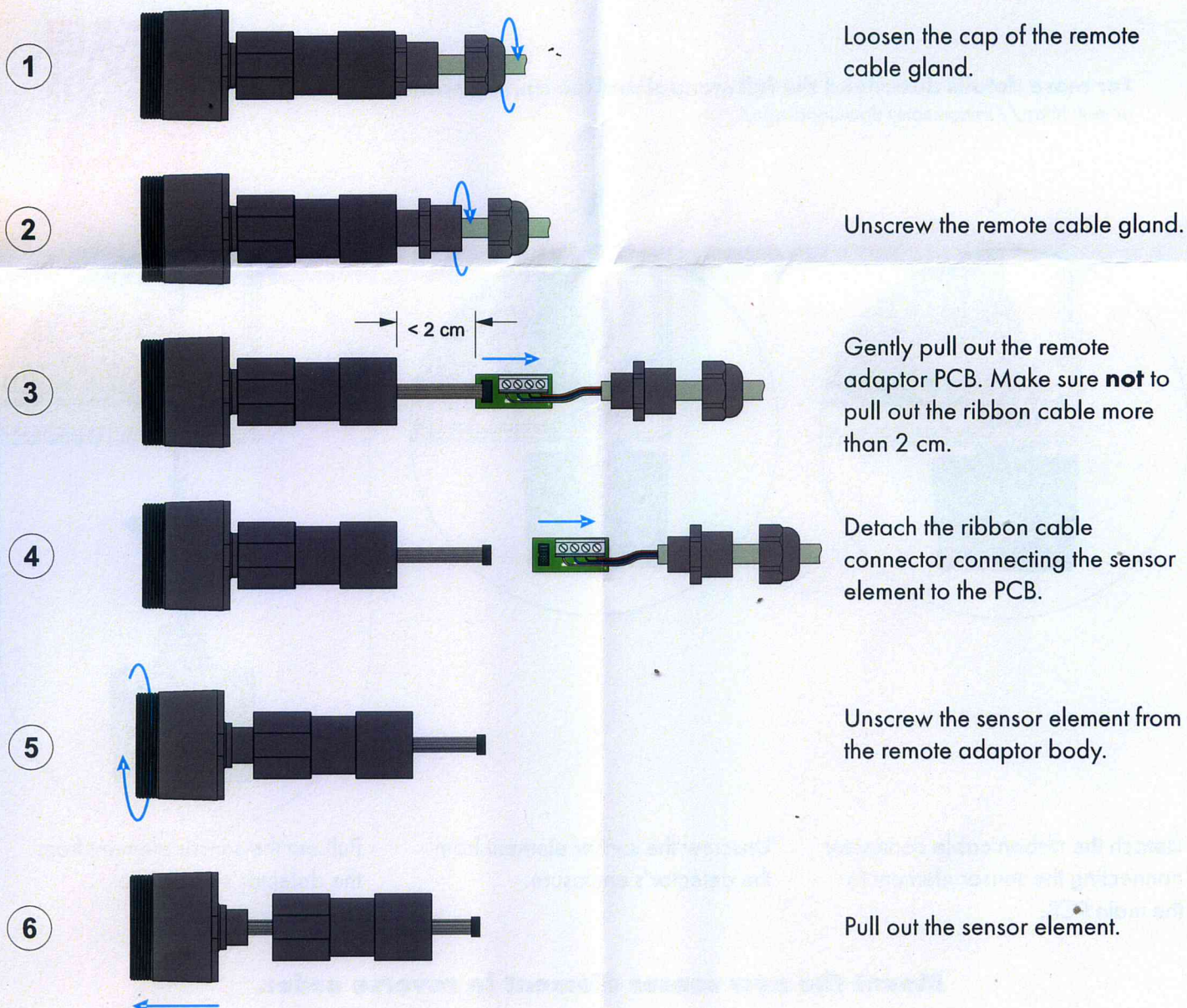


GLACIÄR MIDI

Remote Sensor Element Replacement

The following steps shall be taken when replacing the remote sensor element:

1. Power off the unit
2. Perform the sensor element replacement procedure described in below (1-6).
3. Make sure that the sensor element and cable glands are tightened.
4. Power on the unit
5. Control the sensor element function with the SAMON GLACIÄR app.
(The connected app should show the gas concentration - not greyed out)



Mount the new sensor element in reverse order.

For fixed sensor element replacement - turn sheet →