



Compressor  
Voltage Code : FZ

# AJ4511N-FZ

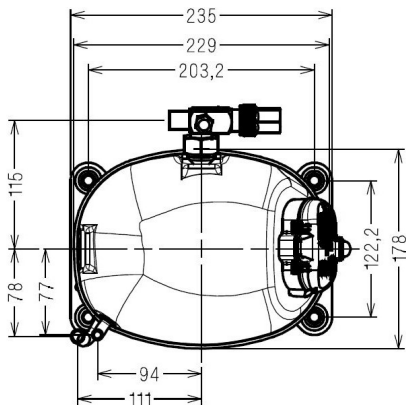
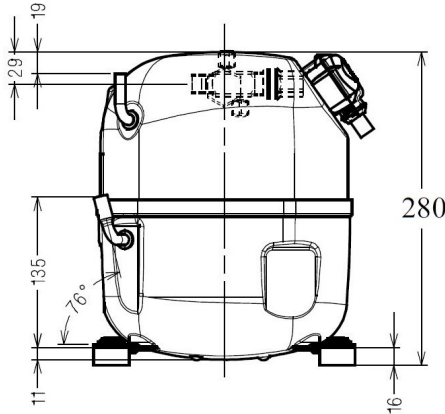
High Temp. Commercial (HP)

220 - 240V 1~ 50 Hz

R1234yf / R134a / R513A

## AJ4511N-FZ3B

Conditions	Frequency	Nominal Cooling Capacity		Sound Power ISO3745 / ISO 3743-1
		Watts	BTU/h	
EN12900_HP / R1234yf	50 Hz	2529	8623	61 dBA
EN12900_HP / R134a	50 Hz	2714	9253	61 dBA
EN12900_HP / R513A	50 Hz	2747	9368	61 dBA



<b>Displacement (cc)</b>	32,7
<b>Net Weight (Kg)</b>	20.8
<b>Oil Quantity (cc)</b>	475.0
<b>Oil Type</b>	Polyolester
<b>Expansion Device</b>	Capillary_Tube/Expansion_Valve
<b>Cooling</b>	Fan
<b>Main Winding (Ohm)</b>	2.9
<b>Start Winding (Ohm)</b>	8.8
<b>Current</b>	
RLA (A)	5.7
MCC (A)	8.7
LRA (A)	29,5
<b>Electrical Equipment</b>	CSR
<b>Overload</b>	MRA38088
Time Check	2.8s - 5.2s / 27.5 A
Open Temp	105° C
Close Temp	57° C
Optional	T0419
<b>Start Capacitor</b>	88 µF / 330 V
<b>Run Capacitor</b>	15 µF / 400 V
<b>Potential Relay</b>	RVA6M**
Pick Up	239/268V
Drop Out	60/135V
Optional	3ARR3*4AA*
<b>Refrigerating connection for</b>	
Suction Tube	15.9 (5/8")
Discharge Tube	7.9 (5/16")
Process Tube	6.35 (1/4")

\* EN12900\_HP : T°Cond. 50.0°C / T°Evap. 5.0°C / T°Return gas temp.. 20.0°C  
T°Subcooling. 0.0K

Certificates :



Note : Tecumseh reserves the right to change information contained in this document without notification.

Selection program - V4.6\_2023296 - 11/19/2023





**Tecumseh**

<b>AJ4511N-FZ</b>	<b>Tension FZ : 220 - 240V 1~ 50 Hz</b>
-------------------	---

Les performances sont données dans les **conditions EN12900\_HP** :  
 Condition Dew  
 The performance data are in **EN12900\_HP conditions** :  
 Dew Condition

Gaz aspirés : 20.0 °C  
 Sous refroidissement : 0.0 K  
 Return gas : 20.0 °C  
 Subcooling : 0.0 K

<b>50 Hz R1234yf</b>											
 <b>N°284QT-FZ</b>											
4   T condensation	5   T évaporation	(°C)	-25	-20	-15	-10	-5	0	5	10	15
<b>30</b>	1   P frigorifique	(Watt)	893	1183	1528	1932	2401	2940	3553	4246	5023
	2   P absorbée	(W)	526	595	660	721	775	820	853	874	879
	3   I absorbée	(A)	2.73	3.00	3.26	3.49	3.71	3.91	4.09	4.25	4.39
<b>40</b>	1   P frigorifique	(Watt)	709	974	1281	1635	2041	2504	3028	3618	4281
	2   P absorbée	(W)	527	612	696	779	858	932	998	1054	1098
	3   I absorbée	(A)	2.54	2.95	3.34	3.71	4.07	4.40	4.71	5.01	5.28
<b>50</b>	1   P frigorifique	(Watt)		752	1030	1341	1692	2086	2529	3025	3581
	2   P absorbée	(W)		606	708	812	915	1015	1111	1201	1282
	3   I absorbée	(A)		2.80	3.32	3.83	4.32	4.79	5.24	5.67	6.08
<b>60</b>	1   P frigorifique	(Watt)			759	1037	1340	1674	2044	2454	2911
	2   P absorbée	(W)			700	822	947	1073	1198	1319	1436
	3   I absorbée	(A)			3.21	3.85	4.47	5.07	5.66	6.22	6.77

<b>50 Hz R134a</b>											
 <b>N°284QT-FZA</b>											
4   T condensation	5   T évaporation	(°C)	-25	-20	-15	-10	-5	0	5	10	15
<b>30</b>	1   P frigorifique	(Watt)	815	1116	1474	1899	2399	2985	3665	4448	5343
	2   P absorbée	(W)	491	565	632	696	759	826	901	987	1087
	3   I absorbée	(A)	2.33	2.64	2.94	3.24	3.53	3.83	4.13	4.42	4.71
<b>40</b>	1   P frigorifique	(Watt)	642	924	1252	1634	2079	2597	3196	3885	4674
	2   P absorbée	(W)	475	575	664	746	825	904	986	1076	1177
	3   I absorbée	(A)	2.25	2.64	3.03	3.42	3.81	4.20	4.58	4.97	5.35
<b>50</b>	1   P frigorifique	(Watt)		716	1014	1354	1744	2195	2714	3310	3994
	2   P absorbée	(W)		552	672	781	883	982	1081	1184	1294
	3   I absorbée	(A)		2.58	3.06	3.54	4.02	4.50	4.97	5.45	5.92
<b>60</b>	1   P frigorifique	(Watt)			764	1063	1400	1784	2223	2729	3308
	2   P absorbée	(W)			649	794	928	1055	1178	1302	1430
	3   I absorbée	(A)			3.03	3.60	4.17	4.74	5.30	5.87	6.43

1 = cooling capacity 2 = power input 3 = current 4 = condensing temperature 5 = evaporating temperature

**Nota : Tecumseh se réserve le droit de modifier les informations contenues dans ce document sans préavis.**  
**Note : Tecumseh reserves the right to change information contained in this document without notification.**

© 2023 Tecumseh Products Company  
All rights reserved



**Tecumseh**

<b>AJ4511N-FZ</b>	<b>Tension FZ : 220 - 240V 1~ 50 Hz</b>
-------------------	---

Les performances sont données dans les **conditions EN12900\_HP** :  
 Condition Dew  
 The performance data are in **EN12900\_HP conditions** :  
 Dew Condition

Gaz aspirés : 20.0 °C  
 Sous refroidissement : 0.0 K  
 Return gas : 20.0 °C  
 Subcooling : 0.0 K

© 2023 Tecumseh Products Company  
All rights reserved

**50 Hz R513A**

**N°3306**

4   T condensation	5   T évaporation	(°C)	-25	-20	-15	-10	-5	0	5	10	15
<b>30</b>	1   P frigorifique	(Watt)	955	1270	1639	2070	2572	3155	3826	4596	5472
	2   P absorbée	(W)	542	619	689	754	819	889	968	1060	1169
	3   I absorbée	(A)	2.33	2.64	2.94	3.24	3.53	3.83	4.13	4.42	4.71
<b>40</b>	1   P frigorifique	(Watt)	746	1042	1377	1761	2201	2706	3286	3949	4704
	2   P absorbée	(W)	514	620	714	800	882	964	1052	1148	1257
	3   I absorbée	(A)	2.25	2.64	3.03	3.42	3.81	4.20	4.58	4.97	5.35
<b>50</b>	1   P frigorifique	(Watt)		793	1100	1440	1822	2254	2747	3309	3947
	2   P absorbée	(W)		585	713	830	938	1043	1148	1259	1379
	3   I absorbée	(A)		2.58	3.06	3.54	4.02	4.50	4.97	5.45	5.92
<b>60</b>	1   P frigorifique	(Watt)			806	1107	1435	1800	2210	2674	3201
	2   P absorbée	(W)			679	836	980	1117	1251	1385	1525
	3   I absorbée	(A)			3.03	3.60	4.17	4.74	5.30	5.87	6.43

1 = cooling capacity 2 = power input 3 = current 4 = condensing temperature 5 = evaporating temperature

**Nota : Tecumseh se réserve le droit de modifier les informations contenues dans ce document sans préavis.**

**Note : Tecumseh reserves the right to change information contained in this document without notification.**