

Series CA and VC CENTRIFUGAL BLOWERS

Alternating Current

For ordering the correct Centrifugal Blower, the following code has to be used:

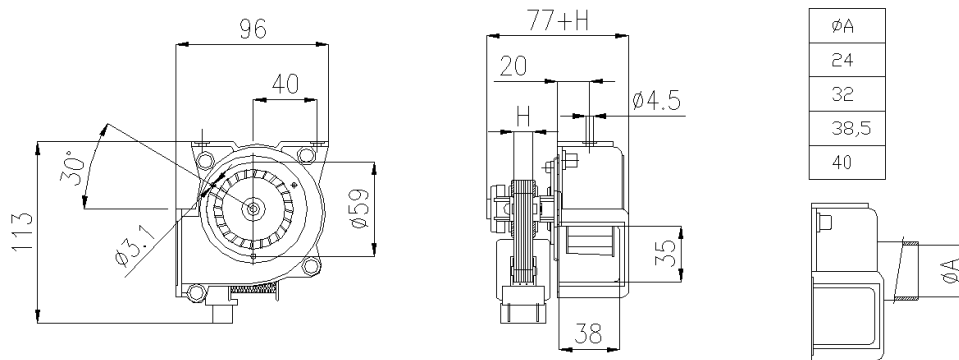
C	A					-										Volt	Hz
1	1	2	3	3	4		5	5	6	6	6		7	7		8	9

- 1 - CA = centrifugal alternating current
- 2 - Wheel and housing material code:
"P" for all Nylon: "A" for all Aluminium: "E" for Nylon wheel and Aluminium housing.
- 3 - Wheel diameter code (see table, column 1)
- 4 - "B" for sleeve bearings: "C" for ball bearings.
- 5 - Supply connection: "FA" by Faston: "PA" by soldering tags.
- 6 - Coil code (see table, column 2)
- 7 - Supply connector w/r to air outlet:
"R7" for same side of air outlet; "R8" for opposite side.
- 8 - Rated voltage.
- 9 - Rated frequency.

CENTRIFUGAL A.C. TYPE	COIL FA = faston or PA = soldering tags	Stack Height = H	WHEEL			HOUSING			SPEED AND FREE AIR FLOWRATE		MAX PRESSURE Pa	INPUT POWER W	Max Temperature °C
			Material	Diameter	Length	Material	Air intake diameter	Air outlet size	rpm	m ³ /h			
			Code	mm	mm	mm	mm	mm	mm	mm			
CAP 05	109	12	GLASS FIBER NYLON	55	30	NYLON	50	34x38	2350	34	41	16	50°
CAP 07	001 003	12 16		70	46		59	36x55	2100 2420	57 66	60 70	21 26	60°
CAE 07	001 003	12 16	ALUMINIUM	70	46	ALUMINIUM	56	33x54	2180 2500	56 65	78 85	21 26	60°
CAA 07	001 003	12 16		76	40		56	33x54	1620 2150	55 73	100 105	21 28	60°
VC10AA	P173	50	ALUMINIUM	100	54	ALUMINIUM	82	60x72	2180	190	260	82	50°
VC10NA	P173	50	GLASS FIBER NYLON	100	54		82	60x72	2320	190	250	82	50°
VC10NN	P173	50	NYLON	100	54	NYLON	82	60x72	2320	190	250	82	50°
VC12	External Rotor	15	ALUM.	120	62	ALUM.	93	81x65	1900 2170	260 300	230 300	57 85	40°
VC14	External Rotor	15 35		140	59	*	120	90x103	1750 2250	420 550	350 382	120 200	40°

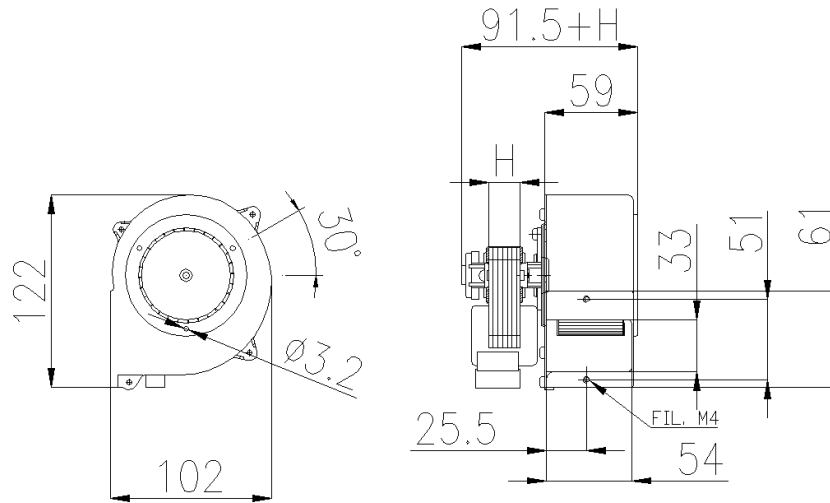
* = Steel sheet treated by cathaphoresis

CAP 05

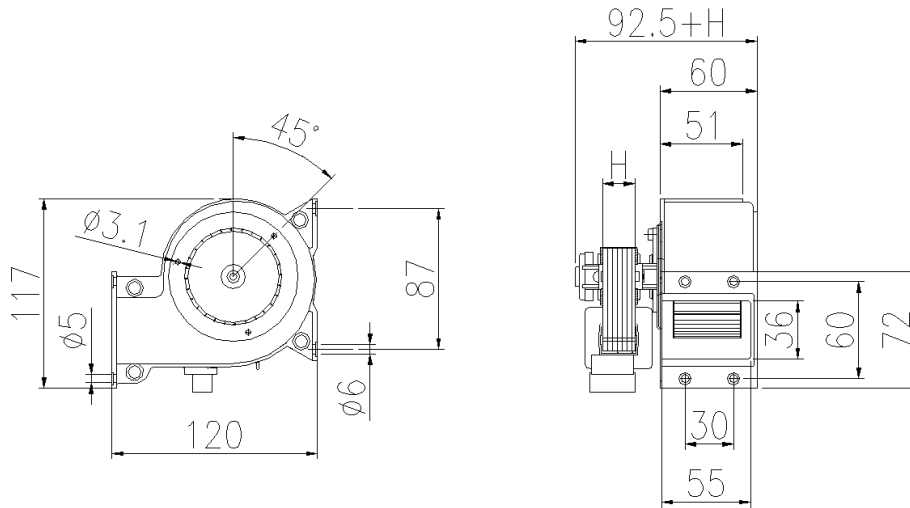


3678

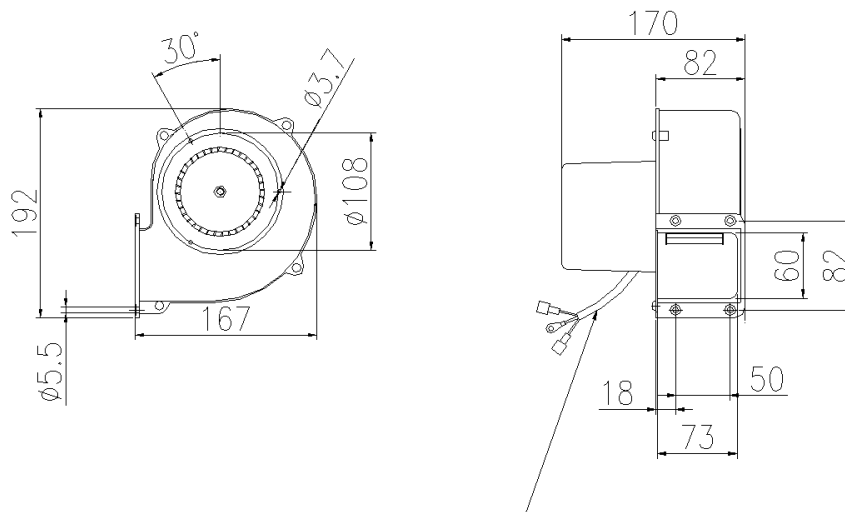
CAA - CAE 07



CAP 07

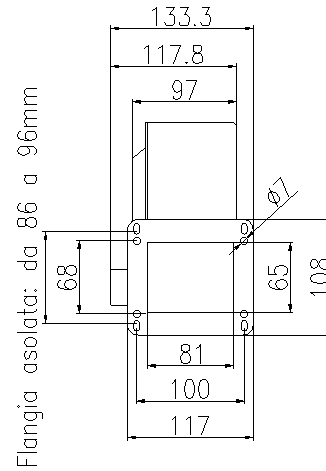
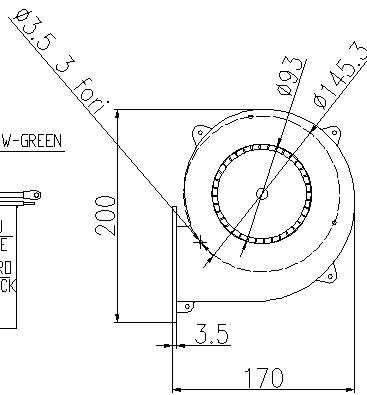
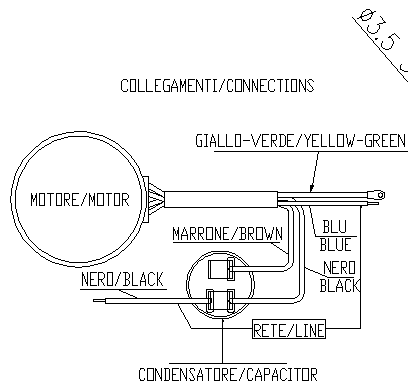


VC10 / AA / NA / NN

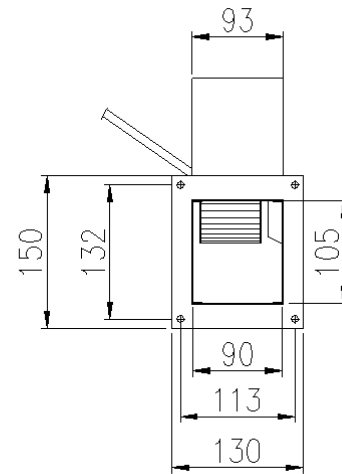
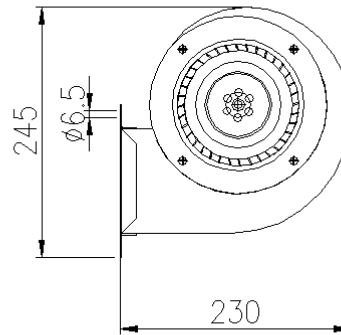
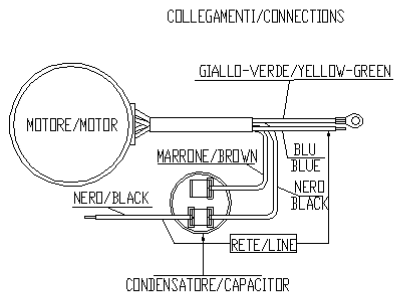


CAVO L=450 CON FASTON MASCHI 6,3X0,8

VC 12



VC 14



Series CC CENTRIFUGAL BLOWERS

Direct Current

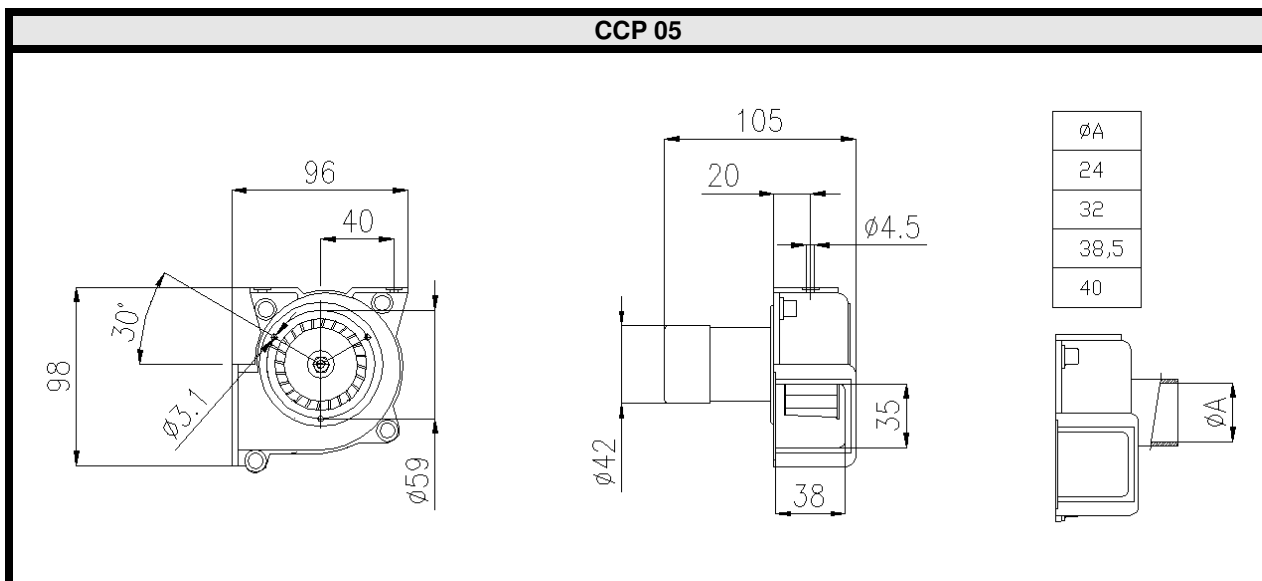
For ordering the correct CENTRIFUGAL BLOWER, the following code has to be used:

C	C				-	Volt C.C.
1	1	2	3	3		4

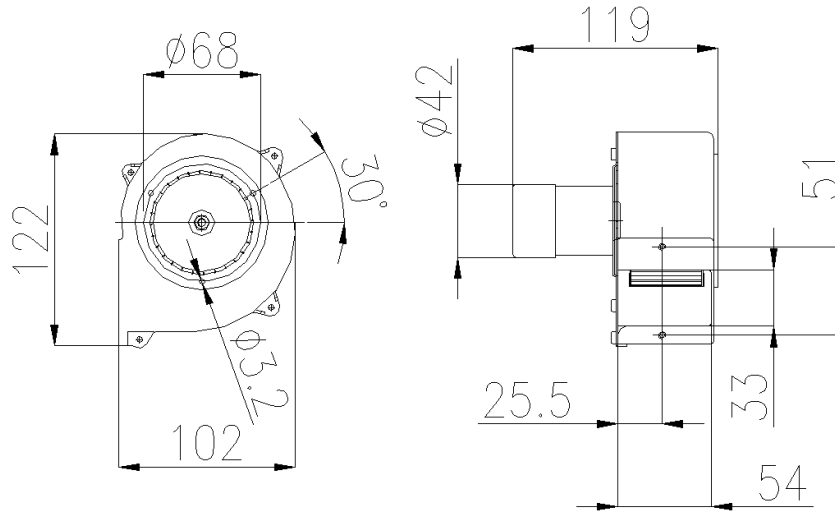
- 1 - CC = centrifugal direct current.
- 2 - Wheel and housing material code:
" P " for all Nylon, " A " for all Aluminium, " E " for Nylon wheel and Aluminium housing
- 3 - Wheel diameter code (see table)
- 4 - Rated voltage.

- Max Temperature 0 to +40° C

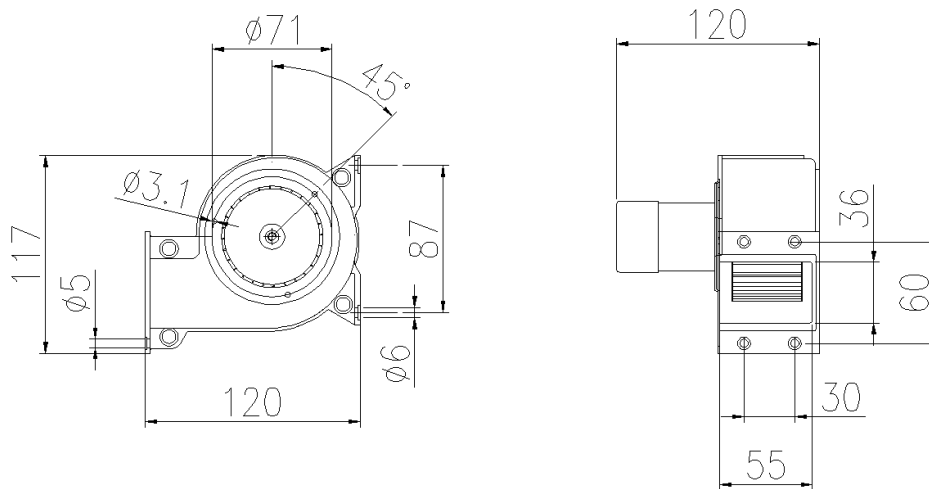
12 or 24 Volt DIRECT CURRENT CENTRIFUGAL BLOWER														
TYPE	CCP 05		CCA 07		CCE 07		CCP 07		CCA 10		CCE 10		CCP 10	
	12V	24V	12V	24V	12V	24V	12V	24V	12V	24V	12V	24V	12V	24V
INPUT CURRENT – A	0,2	0,1	0,4	0,20	0,3	0,16	0,3	0,16	2,8	1,4	2,8	1,4	2,8	1,4
INPUT POWER – W	2,5		5		4		4		33		33		33	
FREE AIR FLOWRATE m ³ /h	19		41		31		35		200		180		180	
MAX PRESSURE Pa	41		100		70		40		300		310		310	
AIR INTAKE DIAM. mm.	50		56		56		59		82		82		82	
AIR OUTLET SIZE mm.	34 x 38		33 x 54		33 x 54		36 x 55		60 x 73		60 x 73		60 x 73	
WHEEL DIAMETER mm.	55		82		70		70		100		100		100	
WHEEL HEIGHT mm.	30		38		46		46		54		54		54	
WHEEL MATERIAL	GLASS FIBER NYLON		ALUMINUM		GLASS FIBER NYLON		GLASS FIBER NYLON		ALUMINUM		GLASS FIBER NYLON		GLASS FIBER NYLON	
HOUSING MATERIAL	NYLON		DIE CAST ALUMINUM		DIE CAST ALUMINUM		NYLON		DIE CAST ALUMINUM		DIE CAST ALUMINUM		NYLON	



CCA – CCE 07



CCP 07



CCA – CCE – CCP 10

