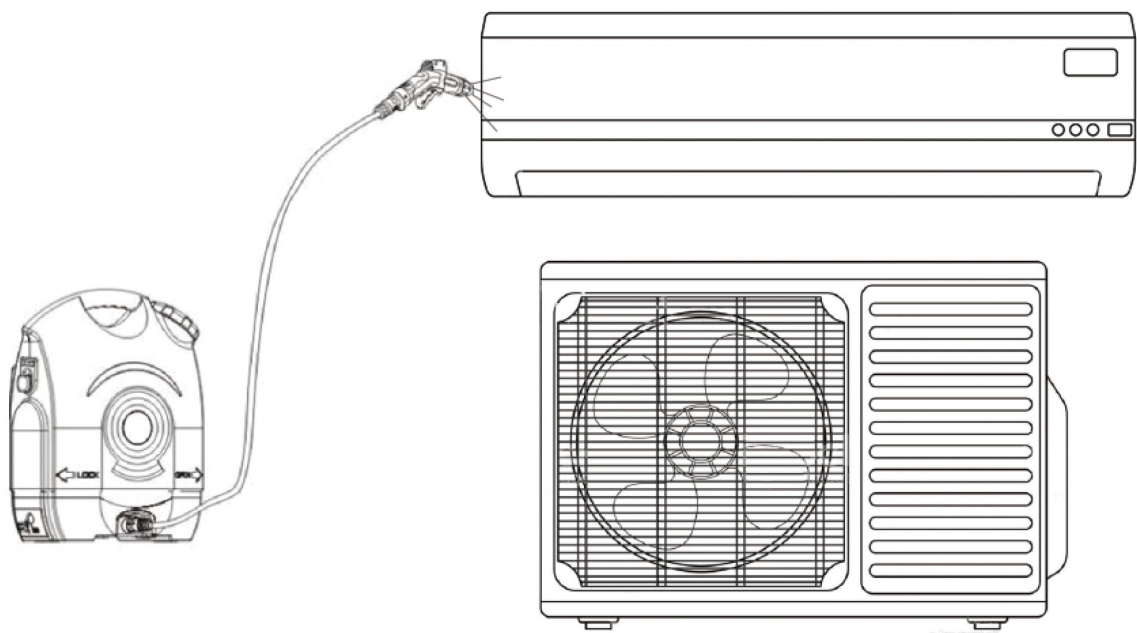


Portable Pressure Washer



Model No. : LTCP-C1



- Low water consumption & High water pressure.
- Energy-saving & Environmental friendly.
- Portable, Durable, Safe & Splash proof.
- Housework Cleaning: Air Conditioner, bathroom, sinks and garden.
- Perfect for Bicycle cleaning, Camping, and other outdoor activities.

CONTENT

OPERATING INSTRUCTIONS.....	3
IMPORTANT SAFETY INSTRUCTIONS.....	3
WARNING (TO REDUCE THE RISK OF INJURY).....	4
LIMITED WARRANTY.....	5
FEATURES.....	6
HOW TO ASSEMBLE.....	7
HOW TO OPERATE.....	8
AUTOMATIC SHUTOFF.....	9
GENERAL MAINTENANCE.....	10
STORING OF CAR WASHER.....	11
TROUBLE SHOOTING.....	12
SPECIFICATION.....	13

CONGRATULATIONS!!

We trust your new purchase will bring you many years of satisfaction.

Our company has designed and developed this product with you in mind.

We are very proud of our products and hope that you are equally satisfied with the quality and performance.

Thank you for your support in choosing our products.

Operating Instructions

Please read these instructions and warnings carefully before using your Portable car washer.

WARNING:

Small parts may cause choking hazard

IMPORTANT SAFETY INSTRUCTIONS

When you use the appliance, basic precautions should always be followed:

1. DO NOT FILL ANY LIQUID OTHER THAN CLEAN WATER, SERIOUS INJURY MAY OCCUR.
2. STUDY THE PRODUCT THOROUGHLY BEFORE OPERATING IT, BE FAMILIAR WITH IT'S OPERATING CONTROLS.
3. DO NOT OPERATE THE PRODUCT WHEN IN DOUBTS OR UNDER THE INFLUENCE OF ALCHOHOL OR DRUGS.
4. **DAMAGED HIGH PRESSURE HOSES CAN BURST AND CAN CAUSE A POTENTIALLY HAZARDOUS SITUATION OR INJURY. HIGH PRESSURE HOSES SHOULD NOT BE KINKED, CRUSHED, TWISTED, OR DAMAGED IN ANY WAY. REPLACE THE HIGH PRESSURE HOSE SHOULD THIS OCCUR.**
5. USE WATER OF TEMPERATURE AT 0°C to 40°C ONLY.

WARNING

TO REDUCE THE RISK OF INJURY:

1. Do not leave appliance when plugged in. Unplug from power port when not in use and before maintenance of machine.
2. This is NOT a toy. Close attention is necessary when used near children.
3. Use only manufacturer's recommended accessories and replacement parts.
Do not use with damaged cord or plug. Do not use the appliance if it is damaged or dropped into water and when it is not working as it should.
4. Do not pull or carry by cord, or to use cord as handle, or to pull cord around sharp edges. Keep cord away from heated surfaces.
5. Keep nozzle free of obstructing objects. Do not use machine when nozzle clogged; keep free of dust, lint, hair, and anything that may reduce air flow.
6. Keep hair, loose clothing, fingers, and all parts of body away from moving machine parts.
7. Do not use without water filter in place.
8. Turn off all controls before unplugging.
9. Using improper voltage may result in damage to the motor and possible injury to the user. Proper voltage is listed on the cleaner plate.
10. Do not direct the water jet toward the unit itself, electrical parts or towards other electrical equipment.
11. Do not alter the original diameter of the spray head nozzle.
12. DISCHARGE residual pressure before disconnecting the portable car washer hose.
13. Before using the portable car washer, CHECK every time that the screws are fully tightened and that there are no broken or worn parts.
14. Not to be used with chlorine based type cleaners, or any detergents.
15. Do not fill the water container with anything but water, or your warranty will be VOID.
16. Never submerge the machine in water.
17. Do not allow the system to freeze. Always empty and store indoors. Freezing will damage pump and water lines.
18. Do not remove cover plate or attempt to disassemble your machine. This will void all warranty, and may cause serious injury.
19. Always use the recommended plug/amp fuse for your machine. Any other may cause damage to your machine or vehicle.
20. Do not spray water directly at eyes or mouth.

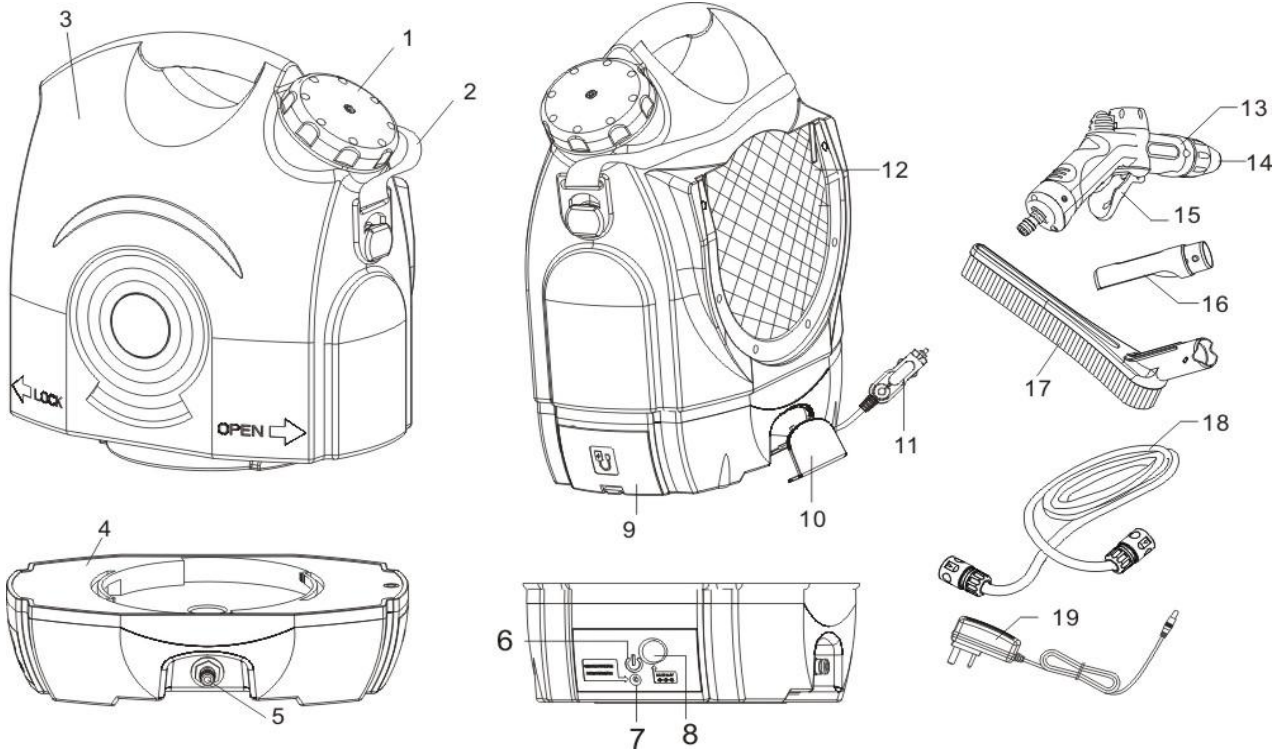
LIMITED WARRANTY

Our company will warrant the product for a period of 12 months from the date of purchase to be free of defects in material or workmanship. Please keep your warranty card or original sales invoice to validate the warranty period.

If the product should become defective within the warranty period, we will repair or replace any defective parts free of charge. The complete machine must be delivered prepaid to our company. Please include complete description of the problem, date of purchase, with original sales receipt and your name, address and telephone number.

The warranty does not include usual wear and tear, damage resulting from accident or unreasonable use of the product, unauthorized repairs or parts that does not belong to the product.

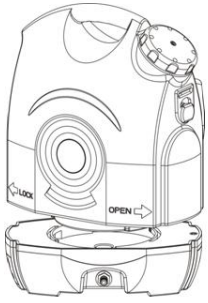
FEATURES



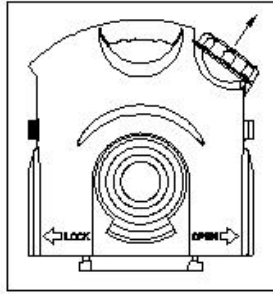
- 1. Lid
- 2. Adjustable Shoulder Strap
- 3. Water tank
- 4. Motor pump case
- 5. Hose inlet
- 6. On/Off Power switch
(The machine will be locked when long press the switch over 5sec)
- 7. Indicator
(Charging: RED; Working and fully charged: Green)
- 8. Charging Port
- 9. Charger Compartment

- 10. Cover for 12V connection
- 11. 12V connection
- 12. Mesh Storage Compartment
- 13. Multi function Spray gun
- 14. Adjustable Nozzle head
- 15. Trigger lock
- 16. shower head
- 17. Brush head
- 18. Hose
- 19. Charger

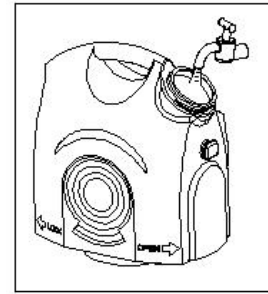
HOW TO ASSEMBLE



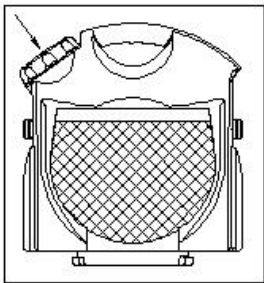
Take off the water tank



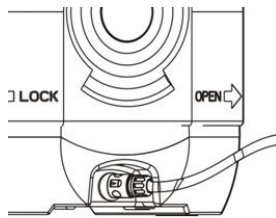
Turn lid counterclockwise to remove.



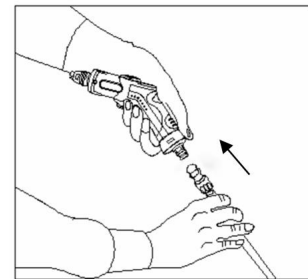
Fill tank with fresh water.
IMPORTANT: Temperature at 0°C to 40°C WATER



Replace lid by turning clockwise to secure in to place.

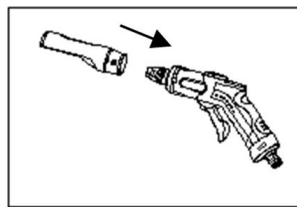
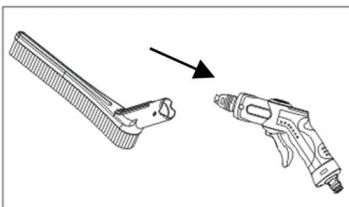


ATTACH HOSE Attach hose to motor base by pushing Down the quick connector.



ATTACH SPRAY NOZZLE Connect hose to spray nozzle by pushing down the quick connector.

Spray Gun Assemble



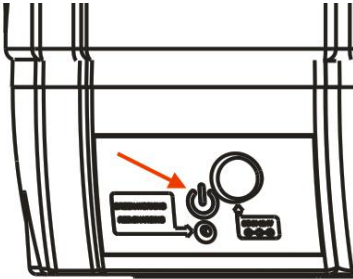
Connect the Brush/Shower Head to the spray gun.

Pushing the Brush/Shower head to the spray gun firmly after aim the salient points at the Brush/Shower Head with the holes at the spray gun

HOW TO OPERATE

IMPORTANT: DISCONNECT THE POWER CABLE WHENEVER ENGINE IS TURNED OFF FOR EXTENDED PERIOD OF TIME. THE POWER DOES NOT TURN OFF AFTER SWITCHING OFF THE ENGINE IN CERTAIN VEHICLES. IF THE POWER PLUG IS LEFT CONNECTED, VEHICLE'S BATTERY MAY BECOME RUN DOWN OR DAMAGED. **Please charge before using for the first time!**

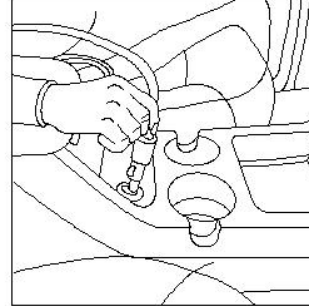
POWER ON



Press the on/off Switch to power the unit on.

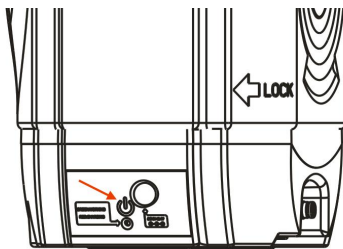
NOTE: Charging time 4-5 hours for a fully charged.
The machine will be locked when long press the switch over 5 seconds, simply recharge the battery to activate it.

FOR 12V Car Charger connection

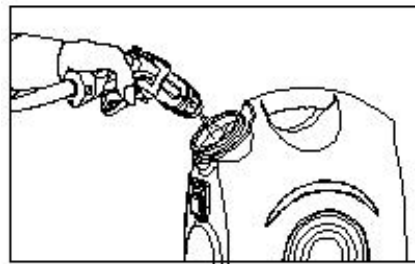


Connect the 12V connection to the car power port

NOTE: Some vehicles require that ignition be in accessory position.



(Diagram 2)



(Diagram 2a)

PURGE AIR FROM SYSTEM: To purge air, turn unit on (Diagram 2). Point nozzle into water tank and squeeze lever until steady stream of water exits hose (Diagram 2a)

With normal use, air can get trapped in the hose. We recommend the following steps to purge the air out of your system and get the maximum amount of pressure out of your new Portable Washer.

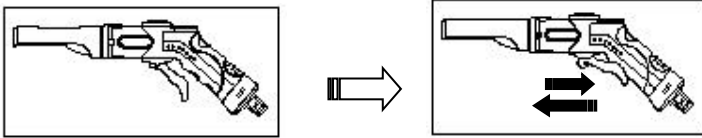
FOLLOW THESE STEPS AFTER EACH TIME YOU REFILL YOUR TANK:

1. Fill the tank with clean water.
2. Connect the hose to the motor pump case.
3. Connect the nozzle to the hose.
4. Press the on/off switch to start the machine when use the built-in battery.
When use 12V connection, plug it into car cigarette lighter or other external power port, then press the on/off switch, the machine will automatically switch to use the power from 12V connections instead of its built-in battery.
5. Direct the pressure nozzle into the tank.
6. Turn the power on and run for approximately 30 seconds or until a steady stream of water is present.
7. Turn off the power.

NOTE: Please start the engine while using the device if you are not sure whether the capacity of the Car Battery is sufficient.

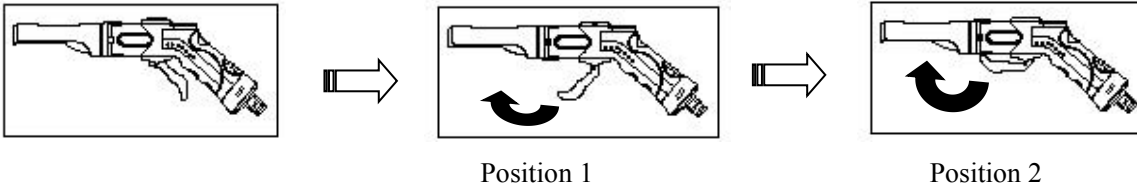
Spray gun Operation:

(1) Intermittent flow



The intermittent flow will be performed when pull and release the trigger repeatedly.

(2) Continuous flow

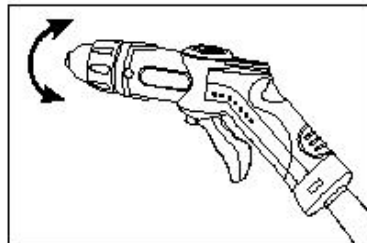


Water will continuous flow when pull the trigger forward at position 1 or position 2.

AUTOMATIC SHUTOFF

THE AUTOMATIC SHUTOFF FEATURE:

When the trigger is released, the dynamic pressure shuts the motor off automatically. When the trigger is pressed, the pressure drop automatically activates the motor and pressure is formed once again with a slight delay. To ensure correct automatic shutoff operation, the time interval between trigger release and engagement must not be less than 5-10 seconds.



Rotating the nozzle head on spray gun and adjust water mode as needed.

SHUTTING DOWN YOUR PORTABLE WASHER:

1. Turn off the switch on the base or lock it by holding the button for over 5 seconds.
2. Pull trigger on spray nozzle to relieve any water pressure in hose or spray nozzle.
3. Disconnect hose from unit.
4. Disconnect nozzle from hose.
5. Press spray nozzle to remove excess water.

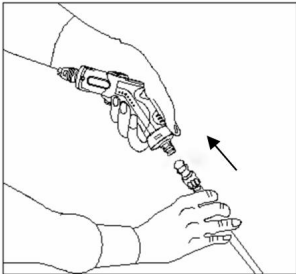
GENERAL MAINTENANCE

FOR DEVICE:

WARNING: ALWAYS DISCONNECT THE PLUG FROM THE POWER SUPPLY BEFORE ANY MAINTENANCE IS STARTED.

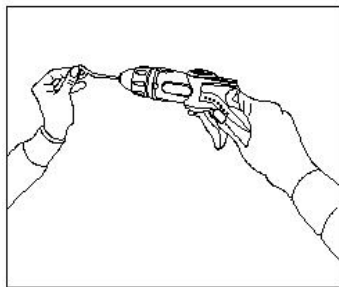
1. **WATER FILTER:** Check the water filter on the motor base before attach the water tank on. Clean the filter when necessary.
2. **NOZZLE CLOGGED:** A clogged nozzle will cause the operating pressure to be too high causing the portable washer to surge. If this happens turn unit off and unplug pressure washer:
 - Unplug power supply, pull trigger on spray nozzle handle to relieve pressure, remove nozzle from hose.
 - Clean the spray nozzle with the nozzle cleaning tool. (See Diagrams 1&2 below).
 - Flush wand assembly backwards with water or compressed air.
 - If pressure is still too high, repeat steps 1-2.
3. **LUBRICATION:** No lubrication is required for this pump. Silicone grease may be added to hose connector O-rings if connecting becomes difficult.
4. Add some silicone grease to the metal part of the spray nozzle if it has not been used for a long time.

TO CLEAN SPRAY NOZZLE



STEP 1:

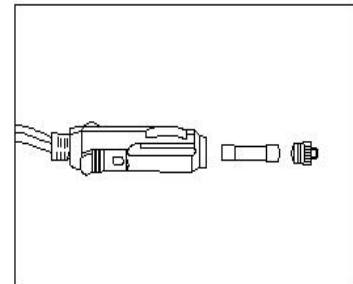
Pull back quick coupling and detach the nozzle from the hose.



STEP 2:

Clean the nozzle with the tool. Remove any dirt from the nozzle and rinse

REPLACE FUSE



Unscrew end of power cord adaptor to remove old fuse. Discard and replace with new fuse.

FOR BATTERY:

- Do not store the machine in elevated temperature for an extended period of time.
- Store the machine in a dry, cool and well-ventilated place, protect from direct exposure sunlight.
- The machine must be stored in a partial state-of-charge, ideally 50 percent, recommended temperature 0°C ~20°C, if it is not regular use, be sure to charge the battery to approx 50% SOC instead of fully charged at least every 3 months.
- To charge the battery, make sure use the original mains charger included in the product. Use other charger may damage the battery or may cause serious injury.

STORING OF PORTABLE CAR WASHER

Your portable car washer should be stored in such a way to protect it from freezing. Do not store this unit outdoors or on an area where temperatures will fall below 0°C (32°F). This can cause extensive damage to this unit and void the warranty. Before storing, follow the shutting down instructions.

DRAIN WATER FROM MACHINE:

1. Turn off the switch, squeeze nozzle lever to release pressure. Remove nozzle and squeeze nozzle to drain water from nozzle. Empty water from tank. Turn unit on and run for approximately 30 seconds without nozzle.
2. Detach high pressure hose. Elevate one end and allow water to drain from hose.
3. Remove and place hose, nozzle and power cord in mesh storage compartments.
4. If unit must be stored under freezing condition, or will be stored for more the 30 days, a pump winterizer / protector or a non-toxic RV anti-freeze can be used to prevent freezing and reduce mineral deposits.

ADD ANTI-FREEZE AS FOLLOWS:

1. Pour approximately 3 liters (1/2 gallon) of RV anti-freeze into tank.
2. Connect high pressure hose, nozzle, and power cord.
3. Turn unit on, squeeze lever until a steady stream of RV anti-freeze is present.
4. Turn unit off. Squeeze nozzle lever to release pressure.
5. Remove and place hose, nozzle and power cord in mesh storage compartments.

USING PRESSURE WASHER AFTER STORING WITH ANTI-FREEZE:

1. Drain RV anti-freeze. (follow steps 1 and 2 from Drain water from system)
2. Run 1 tank of fresh water through system before using and ensure all anti-freeze is purged from system.

WARNING: USE ONLY RV ANTIFREEZE. ANY OTHER ANTI-FREEZE IS CORROSIVE AND CAN DAMAGE PUMP AND VOID WARRANTY.

TROUBLE SHOOTING THE PORTABLE WASHER

Problems	Correction
The pump will not start.	<ul style="list-style-type: none"> ❖ When use car's power with cigarette lighter, please check <ol style="list-style-type: none"> 1. Check power cord is attached properly and has not been damaged in any way. 2. Check the vehicle's battery, in some vehicles the cigarette lighter will only have electricity when the ignition is switched on. 3. Check the fuse for cigarette lighter. ❖ When use the built-in battery, please check if the battery is out of power and need to be recharged or not. ❖ The machine may be locked, every new unit will be locked before packed into carton, to activate it, simply recharge the battery with the provided charger for a few seconds.
The pump is running, but there is no water	<ul style="list-style-type: none"> ❖ Check the nozzle is not clogged. ❖ Check the inlet water filter is not blocked. ❖ Check the water hose is not bent and firmly attached.
The pump will not automatically shut down when the spray gun is turned off	<ul style="list-style-type: none"> ❖ Check if there is water in the tank or not. ❖ If the pressure switch is damaged, contact authorized agent ❖ Pump is faulty, contact authorized agent

NOTE:

To avoid using up the vehicle's power, please start the engine if you need to use the cigarette lighter for more than 30 minutes.

To protect the battery, please do not use the machine for more than 20 minutes for continuous spraying.

DISPOSAL

Electrical and electronic devices must never be disposed of in a regular household waste!!



Consumers are legally obligated and responsible for the proper disposal of electronic and electrical devices by returning them to collecting sites designated for the recycling of electrical and electronic equipment waste.

For more information concerning disposal sites, please contact your local authority or waste management company.

Specification:

- Pressure (PSI): 43.5 to 72.5
- Voltage: 12V (DC)
- Power: 45W
- Hose: 6.0 meter
- Power Cord: 3.0 meter
- Capability: 17 Liter
- N.W.: 3.15kg
- Dimension: 350 x 230 x 460 mm
- Charger Output: 13.4V 1A

Packing List

Item	Name	Quantity
1	Water Tank 17L	ONE
2	Motor Pump	ONE
3	Hose	ONE
4	Spray Gun	ONE
5	Shower Head	ONE
6	charger	ONE
7	Shoulder Strap	ONE
8	Sealing Ring	FOUR
9	Instruction Book	ONE
10	Brush	ONE
11	12V Car Connection	ONE
Date		