

PLATINUM

DEEP VACUUM

CHARGING EQUIPMENT

GAUGES

HOSES

ACCESS VALVES

TOOLS & ACCESSORIES

BRASS FITTINGS

REPAIR PARTS

INDEX

VISIT WWW.JBIND.COM TO LEARN HOW TO ENTER TO WIN A 2011 CHEVY CAMARO

Pump your Ride



TETHERED SAFETY CAP PREVENTS OIL SPILLS DURING TRANSPORT

24 MONTH WARRANTY

1/2 HP CAPACITOR START MOTOR WITH THERMAL OVERLOAD PROTECTION

1/2" NPT BREAK RESISTANT HANDLE ENCOMPASSES EXHAUST

LIFT RING

LIGHTER WEIGHT FINNED ALUMINUM HOUSING REDUCES HEAT DURING OPERATION

GAS BALLAST INCREASES PUMP DOWN TIME SPEED AND KEEPS OIL CLEANER

STAINLESS STEEL VALVING RESISTS CORROSION FOR LONGER PUMP LIFE

2 STAGE DIRECT DRIVE TO ACHIEVE DEEP 15 MICRON VACUUM

AVAILABLE DOMESTIC 115 VOLT, INTERNATIONAL 230 VOLT, AND DUAL VOLTAGE

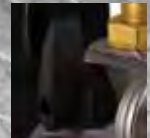
CHECK VALVE PREVENTS OIL BACK FLOW DURING POWER FAILURE

LOW PROFILE ROCKER SWITCH

ALL METAL CONSTRUCTION INCLUDING ALL BRASS FITTINGS

BLANK OFF ISOLATION VALVE ISOLATES THE PUMP FROM THE SYSTEM TO DETERMINE LEAKS IN THE SYSTEM

WELL-PROTECTED DRAIN VALVE SEALED WITH O-RING TO PREVENT LEAKS



15 MICRON RATING

MADE IN USA

Best Pump in the industry

JB Industries' Platinum® Series Vacuum pump is the best pump in the industry. This pump is designed for the serious air conditioning and refrigeration technician. American made and subjected to JB's rigorous performance standards, the Platinum® Series is the top of the line for both quality and durability. Backed by an unprecedented **24 month over-the-counter warranty, there is no better pump on the market. Because each Platinum® pump is made at our facility in Aurora, Illinois, quality and dependability are woven in with hard working American pride. Completely field repairable, our Platinum® series is designed to last. Turn to page 76 for a complete list of repair parts.

Operating instructions available on our web site at www.jbind.com

**Subject to warranty as set forth on page 73 and warranty and terms and conditions of sales set forth at www.jbind.com

PLATINUM® SERIES VACUUM PUMPS



UNITED KINGDOM



INTERNATIONAL



Operating Temperature 150°F +/- 18° F (60° C +/- 10°C)

US DOMESTIC

DUAL

EURO

U.K.

US DOMESTIC	DV-42N	DV-85N	DV-142N	DV-200N	DV-285N
CFM	1.5 CFM (42 l/m)	3 CFM (85 l/m)	5 CFM (142 l/m)	7 CFM (200 l/m)	10 CFM (285 l/m)
MOTOR	1/2 HP, 1725 RPM	1/2 HP, 1725 RPM	1/2 HP, 1725 RPM	1/2 HP, 1725 RPM	1/2 HP, 1725 RPM
VOLTAGE	115v, 60Hz	115v, 60Hz	115v, 60Hz	115v, 60Hz	115v, 60Hz
PLUG	Std. U.S. 110v	Std. U.S. 110v	Std. U.S. 110v	Std. U.S. 110v	Std. U.S. 110v
INTAKE PORT	1/4"	1/4" x 3/8"	3/8" x 1/4" x 3/8"	1/2" x 1/4" x 3/8"	1/2" x 1/4" x 3/8"
OIL CAP	27 oz. (798 cc)	27 oz. (798 cc)	23 oz. (680 cc)	23 oz. (680 cc)	24 oz. (709 cc)
SHIP DIMENS.	17-5/8" (h) x 9-1/8" (w) x 14" (l)	17-5/8" (h) x 9-1/8" (w) x 14" (l)	17-5/8" (h) x 9-1/8" (w) x 14" (l)	17-5/8" (h) x 9-1/8" (w) x 14" (l)	17-5/8" (h) x 9-1/8" (w) x 14" (l)
WEIGHT	29 lbs. (13.2 Kg)	30 lbs. (13.6 Kg)	32 lbs. (14.5 Kg)	32 lbs. (14.5 Kg)	34 lbs. (15.4 Kg)

DUAL VOLTAGE	DV-42N-250	DV-85N-250	DV-142N-250	DV-200N-250	DV-285N-250
MOTOR	1/2 HP 1725/1425 RPM	1/2 HP 1725/1425 RPM	1/2 HP 1725/1425 RPM	1/2 HP 1725/1425 RPM	1/2 HP 1725/1425 RPM
VOLTAGE	115v/60Hz, 230v/50Hz	115v/60Hz, 230v/50Hz	115v/60Hz, 230v/50Hz	115v/60Hz, 230v/50Hz	115v/60Hz, 230v/50Hz
PLUG	Std. U.S. 220v	Std. U.S. 220v	Std. U.S. 220v	Std. U.S. 220v	Std. U.S. 220v

EURO	DV-42N-250EU	DV-85N-250EU	DV-142N-250EU	DV-200N-250EU	DV-285N-250EU
MOTOR	1/2 HP, 1425 RPM	1/2 HP, 1425 RPM	1/2 HP, 1425 RPM	1/2 HP, 1425 RPM	1/2 HP, 1425 RPM
VOLTAGE	230v, 50Hz	230v, 50Hz	230v, 50Hz	230v, 50Hz	230v, 50Hz
PLUG	Euro	Euro	Euro	Euro	Euro

UNITED KINGDOM	DV-42N-250UK	DV-85N-250UK	DV-142N-250UK	DV-200N-250UK	DV-285N-250UK
MOTOR	1/2 HP, 1425 RPM	1/2 HP, 1425 RPM	1/2 HP, 1425 RPM	1/2 HP, 1425 RPM	1/2 HP, 1425 RPM
VOLTAGE	230v, 50Hz	230v, 50Hz	230v, 50Hz	230v, 50Hz	230v, 50Hz
PLUG	UK	UK	UK	UK	UK

To check vacuum accurately, use the new DV-40 SUPERNOVA or the DV-22N (see pages 10 & 11).
*One Micron On A U-Tube Manometer. 25,400 Microns = 1"

DEEP VACUUM

CHARGING EQUIPMENT

GAUGES

HOSES

ACCESS VALVES

TOOLS & ACCESSORIES

BRASS FITTINGS

REPAIR PARTS

INDEX