

PART NO	MODEL NUMBER	A ±3.0	B	C	D ±3.0	SPECIFICATIONS	
						ES NO.	DESCRIPTION
497-2546-00	ZR40KC-PFV	400.2 (15.76)	374.6 (14.75)	277.1 (10.91)	235.5 (9.27)	ES92-155	CONVERSION-METRIC
	ZR40K3/K3E-PFJ,PFV,TFD,TFE,TF5						
	ZR42KC-PFV						
	ZR42K3/K3E-PFJ,PFV,TFD,TFE,TF5						
497-2546-01	ZR30KC-PFV	386.4 (15.21)	360.9 (14.21)	264.4 (10.41)	222.8 (8.77)	ES92-155	CONVERSION-METRIC
	ZR30K3/K3E-TFD,TFE						
	ZR32KC-PFV						
	ZR32K3/K3E-PFJ,PFV,TFD,TFE,TFJ						
	ZR34KC-PFV						
	ZR34K3/K3E-PFJ,PFV,TFD,TFE,TF5,TF7						
	ZR36KC-PFV						
497-2546-02	ZR22K3/K3E-PFJ,PFV,TFD,TF5	363.8 (14.32)	338.3 (13.32)	244.5 (9.63)	202.9 (7.99)	ES92-155	CONVERSION-METRIC
	ZR24K3/K3E-PFV,PFJ,TFD,TF5						
	ZR26KC-PFV						
	ZR26K3/K3E-PFV,PFJ,TFD,TF5						
	ZR28K3/K3E-PFJ,PFV,TF5						
497-2546-03	ZR18K3/K3E-TFD	352.8 (13.89)	327.3 (12.89)	233.5 (9.19)	191.9 (7.55)	ES92-155	CONVERSION-METRIC
	ZR18K3/K3E-PFV						

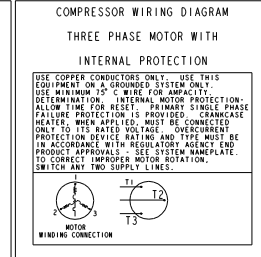
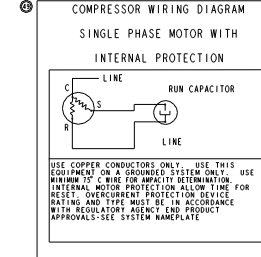
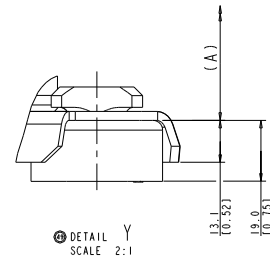
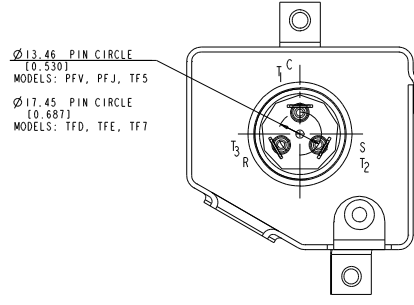
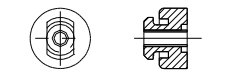
NOTES:

- ALL TOLERANCES ±1.50 (0.060) UNLESS OTHERWISE SPECIFIED.
- MOUNTING KIT.
- TUBE ENDS MUST BE PLUGGED.

DUE TO ACCUMULATED ASSEMBLY TOLERANCES THE LISTED COMPONENTS MAY VARY FROM THE MOUNTING HOLES AS SHOWN BELOW:

◇ ALL FITTINGS : ±3.0 (0.12)

GROMMET DIURMETER	4 FOOT KIT
35-45	527-0116-00



INTERPRET PER ASME Y14.1M-1994 AND EMERSON CLIMATE TECHNOLOGIES, INC. DESIGN STANDARDS 022022 3D NO SCALE DRAWING

SWIRP PROJECT (COMMERCIAL)

UNLESS OTHERWISE SPECIFIED DIMENSIONS ARE IN MILLIMETERS OR INCHES

FINISHES: 1-PLACE ± 0.13 2-PLACE ± 0.25 ANGULAR ± 0.13

ECN02022	50	ADD ZR42K3-TF7 MODELS	04-03-10	FY	LZC	SI
ECN02158	49	REBRAND AND OBSOLETE -03	12-01-09	PAS	MA	KAR
32-9993-7219	8	RELEASED	03-24-09	TR		
REV. NO.	REV. NO.	REV. NO.	DATE	BY	CHKD	APPR
CONFIDENTIALITY NOTICE						
THIS DRAWING AND INFORMATION CONTAINED HEREIN ARE THE EXCLUSIVE PROPERTY OF EMERSON CLIMATE TECHNOLOGIES, INC. AND SHALL BE RETURNED UPON DEMAND AND SHALL NOT BE REPRODUCED IN WHOLE OR IN PART WITHOUT THE WRITTEN CONSENT OF EMERSON CLIMATE TECHNOLOGIES, INC.						
MATERIAL SPECIFICATION		SUPERSEDES: SAE NO. 7 REV. NO.				
N/A		PAS		497-2546-00 / 46		
DATE		SCALE		DATE FORMAT		
12-09-09		1:1		MM-DD-YY		
DRAWING NUMBER SHEET 1 OF 1						
REF DWG-WELD COMP ASSM 497-2546-00						