



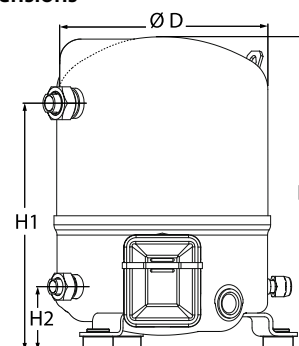
Datasheets

# Maneurop<sup>®</sup> Reciprocating compressors MT / MTZ / MPZ / NTZ



**General Characteristics**

Model number (on compressor nameplate)		<b>MTZ32JF4B</b>
Code number for Industrial pack**		MTZ32-4M
Drawing number		8501032e
Suction and discharge connections		Rotolock
Suction connection		1-1/4 " Rotolock
Discharge connection		1 " Rotolock
Suction connection with supplied sleeve		5/8 " ODF
Discharge connection with supplied sleeve		1/2 " ODF
Oil sight glass		None
Oil equalisation connection		None
Oil drain connection		None
LP gauge port		Schrader
IPR valve		30 bar / 8 bar
Cylinders		1
Swept volume		53,86 cm <sup>3</sup> /rev
Displacement @ Nominal speed		9.4 m <sup>3</sup> /h @ 2900 rpm - 11.3 m <sup>3</sup> /h @ 3500 rpm
Net weight		24 kg
Oil charge		0,95 litre, POE - 160PZ
Maximum system test pressure Low Side / High side		25 bar(g) / 30 bar(g)
Maximum differential test pressure		30 bar
Maximum number of starts per hour		12
Refrigerant charge limit		2,5 kg
Approved refrigerants		R404A, R507A, R134a, R407C

**Dimensions**


D=224 mm

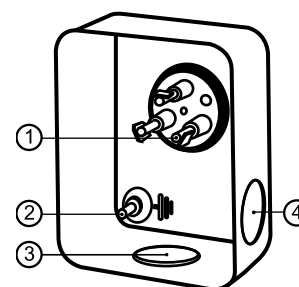
H=356 mm

H1=263 mm

H2=68 mm

**Electrical Characteristics**

Nominal voltage	380-400V/3/50Hz - 460V/3/60Hz
Voltage range	340-440 V @ 50Hz - 414-506 V @ 60Hz
Winding resistance (between phases) +/- 7% at 25°C	6.15 Ω
Maximum Continuous Current (MCC)	8 A
Locked Rotor Amps (LRA)	25 A
Motor protection	Internal overload protector

**Terminal box**


IP55 (with cable gland)

1: Spade connectors 1/4"

2: Earth M4-12

3: Knock-out Ø 21 mm (0.83")

4: Hole Ø 21 mm (0.83")

**Recommended Installation torques**

Oil sight glass	0 Nm
Power connections / Earth connection	Nm / 2 Nm
Mounting bolts	15 Nm

**Parts shipped with compressor**

Mounting kit with grommets, bolts, nuts, sleeves and washers
Initial oil charge
Installation instructions

**Approvals** : CE certified, UL certified (file SA6873), -

\*Singlepack: Compressor in cardboard box

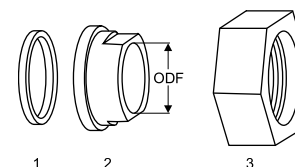
\*\*Industrial pack: 12 Unboxed compressors on pallet (order per multiples of 12)

**Rotolock accessories, suction side**

**Code no.**

Solder sleeve, P09 (1-1/4" Rotolock, 5/8" ODF)	8153011
Angle adapter, C09 (1-1/4" Rotolock, 5/8" ODF)	8168009
Rotolock valve, V09 (1-1/4" Rotolock, 5/8" ODF)	8168033
Gasket, 1-1/4"	8156131

**Gaskets, sleeves and nuts**



- 1: Gasket
- 2: Solder sleeve
- 3: Rotolock nut

**Rotolock accessories, discharge side**

**Code no.**

Solder sleeve, P06 (1" Rotolock, 1/2" ODF)	8153007
Angle adapter, C06 (1" Rotolock, 1/2" ODF)	8168007
Rotolock valve, V06 (1" Rotolock, 1/2" ODF)	8168031
Gasket, 1"	8156130

**Rotolock accessories, sets**

**Code no.**

Angle adapter set, C09 (1-1/4"~5/8"), C06 (1"~1/2")	7703012
Valve set, V09 (1-1/4"~5/8"), V06 (1"~1/2")	7703005
Gasket set, 1", 1-1/4", 1-3/4", OSG gaskets black & white	8156009

**Oil / lubricants**

**Code no.**

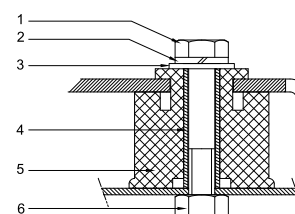
POE lubricant, 160PZ, 1 litre can	7754019
POE lubricant, 160PZ, 2 litre can	7754020

**Crankcase heaters**

**Code no.**

PTC heater 27W	120Z0459
Belt type crankcase heater, 54 W, 230 V, CE mark, UL	7773106
Belt type crankcase heater, 54 W, 400 V, UL	7773013

**Mounting kit**



- 1: Bolt (3x)
- 2: Lock washer (3x)
- 3: Flat washer (3x)
- 4: Sleeve (3x)
- 5: Grommet (3x)
- 6: Nut (3x)

**Miscellaneous accessories**

**Code no.**

Electronic soft start kit, MCI 15 C	7705006
Acoustic hood for 1 cylinder compressor	7755001

**Spare parts**

**Code no.**

Mounting kit for 1 and 2 cylinder compressor, including 3 grommets, 3 bolts	8156001
Service kit for terminal box 80 x 96 mm, including 1 cover, 1 clamp	8156134

Performance data at 50 Hz, EN 12900 rating conditions

R407C

Cond. temp. in °C (tc)	Evaporating temperature in °C (to)							
	-15	-10	-5	0	5	10	15	

Cooling capacity in W

35	3 135	4 200	5 458	6 931	8 644	10 620	12 882	-	-
40	2 809	3 815	4 997	6 377	7 980	9 827	11 943	-	-
45	2 480	3 428	4 534	5 821	7 313	9 032	11 003	-	-
50	-	3 040	4 071	5 265	6 646	8 238	10 063	-	-
55	-	-	3 609	4 710	5 981	7 445	9 125	-	-
60	-	-	-	4 159	5 320	6 656	8 191	-	-
65	-	-	-	3 614	4 664	5 873	7 263	-	-

Power input in W

35	1 449	1 615	1 749	1 857	1 942	2 011	2 068	-	-
40	1 487	1 689	1 856	1 991	2 101	2 190	2 262	-	-
45	1 503	1 748	1 953	2 124	2 265	2 381	2 476	-	-
50	-	1 786	2 038	2 250	2 429	2 579	2 704	-	-
55	-	-	2 103	2 365	2 588	2 779	2 940	-	-
60	-	-	-	2 463	2 738	2 976	3 181	-	-
65	-	-	-	2 539	2 873	3 165	3 421	-	-

Current consumption in A

35	3.29	3.47	3.64	3.78	3.91	4.01	4.10	-	-
40	3.34	3.57	3.78	3.95	4.11	4.24	4.35	-	-
45	3.38	3.66	3.91	4.13	4.33	4.50	4.65	-	-
50	-	3.72	4.04	4.32	4.57	4.79	4.98	-	-
55	-	-	4.14	4.49	4.81	5.09	5.33	-	-
60	-	-	-	4.65	5.04	5.39	5.71	-	-
65	-	-	-	4.80	5.27	5.70	6.10	-	-

Mass flow in kg/h

35	68	90	115	143	176	213	255	-	-
40	64	86	110	138	170	207	248	-	-
45	60	81	105	133	164	200	240	-	-
50	-	76	100	127	158	192	231	-	-
55	-	-	94	121	151	185	222	-	-
60	-	-	-	114	144	176	213	-	-
65	-	-	-	107	136	168	203	-	-

Coefficient of performance (C.O.P.)

35	2.16	2.60	3.12	3.73	4.45	5.28	6.23	-	-
40	1.89	2.26	2.69	3.20	3.80	4.49	5.28	-	-
45	1.65	1.96	2.32	2.74	3.23	3.79	4.44	-	-
50	-	1.70	2.00	2.34	2.74	3.19	3.72	-	-
55	-	-	1.72	1.99	2.31	2.68	3.10	-	-
60	-	-	-	1.69	1.94	2.24	2.58	-	-
65	-	-	-	1.42	1.62	1.86	2.12	-	-

Nominal performance at to = 5 °C, tc = 50 °C

Cooling capacity	6 646	W
Power input	2 429	W
Current consumption	4.57	A
Mass flow	158	kg/h
C.O.P.	2.74	



Pressure switch settings

Maximum HP switch setting	29.4	bar(g)
Minimum LP switch setting	0.2	bar(g)
LP pump down setting	1.3	bar(g)

Sound power data

Sound power level	0	dB(A)
With acoustic hood	0	dB(A)

to: Evaporating temperature at dew point

tc: Condensing temperature at dew point

Rating conditions : Superheat = 10 K , Subcooling = 0 K

All performance data +/- 5%

Performance data at 50 Hz, ARI rating conditions

R407C

Cond. temp. in °C (tc)	Evaporating temperature in °C (to)							
	-15	-10	-5	0	5	10	15	

Cooling capacity in W

35	3 375	4 515	5 860	7 434	9 261	11 366	13 773	-	-
40	3 040	4 123	5 393	6 875	8 591	10 568	12 830	-	-
45	2 701	3 728	4 923	6 312	7 919	9 768	11 884	-	-
50	-	3 330	4 452	5 748	7 245	8 967	10 939	-	-
55	-	-	3 980	5 186	6 573	8 168	9 996	-	-
60	-	-	-	4 626	5 905	7 374	9 058	-	-
65	-	-	-	4 072	5 244	6 587	8 129	-	-

Power input in W

35	1 449	1 615	1 749	1 857	1 942	2 011	2 068	-	-
40	1 487	1 689	1 856	1 991	2 101	2 190	2 262	-	-
45	1 503	1 748	1 953	2 124	2 265	2 381	2 476	-	-
50	-	1 786	2 038	2 250	2 429	2 579	2 704	-	-
55	-	-	2 103	2 365	2 588	2 779	2 940	-	-
60	-	-	-	2 463	2 738	2 976	3 181	-	-
65	-	-	-	2 539	2 873	3 165	3 421	-	-

Current consumption in A

35	3.29	3.47	3.64	3.78	3.91	4.01	4.10	-	-
40	3.34	3.57	3.78	3.95	4.11	4.24	4.35	-	-
45	3.38	3.66	3.91	4.13	4.33	4.50	4.65	-	-
50	-	3.72	4.04	4.32	4.57	4.79	4.98	-	-
55	-	-	4.14	4.49	4.81	5.09	5.33	-	-
60	-	-	-	4.65	5.04	5.39	5.71	-	-
65	-	-	-	4.80	5.27	5.70	6.10	-	-

Mass flow in kg/h

35	68	89	114	142	175	212	254	-	-
40	64	85	110	137	169	205	246	-	-
45	59	81	105	132	163	198	238	-	-
50	-	76	100	126	157	191	230	-	-
55	-	-	94	120	150	183	221	-	-
60	-	-	-	114	143	175	212	-	-
65	-	-	-	107	135	167	202	-	-

Coefficient of performance (C.O.P.)

35	2.33	2.80	3.35	4.00	4.77	5.65	6.66	-	-
40	2.04	2.44	2.91	3.45	4.09	4.83	5.67	-	-
45	1.80	2.13	2.52	2.97	3.50	4.10	4.80	-	-
50	-	1.86	2.18	2.55	2.98	3.48	4.05	-	-
55	-	-	1.89	2.19	2.54	2.94	3.40	-	-
60	-	-	-	1.88	2.16	2.48	2.85	-	-
65	-	-	-	1.60	1.83	2.08	2.38	-	-

Nominal performance at to = 7.2 °C, tc = 54.4 °C

Cooling capacity	7 335	W
Power input	2 655	W
Current consumption	4.90	A
Mass flow	165	kg/h
C.O.P.	2.76	

Pressure switch settings

Maximum HP switch setting	29.4	bar(g)
Minimum LP switch setting	0.2	bar(g)
LP pump down setting	1.3	bar(g)

Sound power data

Sound power level	0	dB(A)
With acoustic hood	0	dB(A)

to: Evaporating temperature at dew point

tc: Condensing temperature at dew point

Rating conditions : Superheat = 11.1 K , Subcooling = 8.3 K

All performance data +/- 5%

**Performance data at 50 Hz, EN 12900 rating conditions**
**R134a**

Cond. temp. in °C (tc)	Evaporating temperature in °C (to)							
	-15	-10	-5	0	5	10	15	20

**Cooling capacity in W**

35	1 794	2 474	3 326	4 372	5 639	7 150	8 931	11 006	-
40	1 604	2 244	3 046	4 033	5 230	6 662	8 354	10 330	-
45	1 428	2 022	2 768	3 691	4 813	6 160	7 757	9 628	-
50	1 268	1 811	2 497	3 348	4 389	5 646	7 142	8 902	-
55	1 128	1 614	2 233	3 007	3 962	5 122	6 511	8 154	-
60	-	1 433	1 979	2 672	3 535	4 592	5 869	7 389	-
65	-	-	-	2 344	3 110	4 059	5 218	6 609	-
70	-	-	-	-	-	3 526	4 560	5 816	-

**Power input in W**

35	1 034	1 173	1 299	1 408	1 494	1 551	1 574	1 557	-
40	1 066	1 214	1 353	1 476	1 579	1 655	1 699	1 706	-
45	1 088	1 248	1 400	1 540	1 661	1 758	1 825	1 858	-
50	1 102	1 274	1 442	1 599	1 740	1 859	1 951	2 011	-
55	1 105	1 292	1 476	1 652	1 815	1 958	2 077	2 165	-
60	-	1 301	1 504	1 700	1 886	2 055	2 201	2 319	-
65	-	-	-	1 742	1 952	2 148	2 324	2 474	-
70	-	-	-	-	-	2 238	2 444	2 628	-

**Current consumption in A**

35	3.14	3.25	3.35	3.44	3.51	3.56	3.57	3.56	-
40	3.17	3.29	3.41	3.52	3.61	3.68	3.72	3.73	-
45	3.19	3.33	3.47	3.59	3.70	3.80	3.87	3.92	-
50	3.20	3.36	3.51	3.66	3.80	3.92	4.02	4.10	-
55	3.20	3.37	3.55	3.72	3.88	4.03	4.17	4.28	-
60	-	3.38	3.57	3.77	3.96	4.14	4.31	4.46	-
65	-	-	-	3.81	4.03	4.24	4.44	4.63	-
70	-	-	-	-	-	4.33	4.57	4.80	-

**Mass flow in kg/h**

35	44	59	77	99	126	156	192	233	-
40	41	56	74	96	122	153	188	229	-
45	38	53	71	93	118	148	183	223	-
50	36	50	68	89	114	143	177	217	-
55	34	48	65	85	109	138	171	210	-
60	-	46	61	81	104	132	164	202	-
65	-	-	-	77	99	125	156	193	-
70	-	-	-	-	-	118	148	183	-

**Coefficient of performance (C.O.P.)**

35	1.73	2.11	2.56	3.10	3.77	4.61	5.67	7.07	-
40	1.50	1.85	2.25	2.73	3.31	4.03	4.92	6.05	-
45	1.31	1.62	1.98	2.40	2.90	3.50	4.25	5.18	-
50	1.15	1.42	1.73	2.09	2.52	3.04	3.66	4.43	-
55	1.02	1.25	1.51	1.82	2.18	2.62	3.14	3.77	-
60	-	1.10	1.32	1.57	1.87	2.24	2.67	3.19	-
65	-	-	-	1.35	1.59	1.89	2.25	2.67	-
70	-	-	-	-	-	1.58	1.87	2.21	-

**Nominal performance at to = 5 °C, tc = 50 °C**

Cooling capacity	4 389	W
Power input	1 740	W
Current consumption	3.80	A
Mass flow	114	kg/h
C.O.P.	2.52	

**Pressure switch settings**

Maximum HP switch setting	22.6	bar(g)
Minimum LP switch setting	0.2	bar(g)
LP pump down setting	0.5	bar(g)

**Sound power data**

Sound power level	0	dB(A)
With acoustic hood	0	dB(A)

to: Evaporating temperature at dew point

tc: Condensing temperature at dew point

Rating conditions : Superheat = 10 K , Subcooling = 0 K

All performance data +/- 5%

Danfoss can accept no responsibility for possible errors in catalogues, brochures and other printed material. Danfoss reserves the right to alter its products without notice. This also applies to products already on order provided that such alternations can be made without subsequential changes being necessary in specifications already agreed. All trademarks in this material are property of the respective companies. Danfoss, the Danfoss logotype and Maneurop are trademarks of Danfoss A/S. All rights reserved.

Performance data at 50 Hz, ARI rating conditions

R134a

Cond. temp. in °C (tc)	Evaporating temperature in °C (to)							
	-15	-10	-5	0	5	10	15	20

Cooling capacity in W

35	1 943	2 676	3 590	4 713	6 069	7 684	9 585	11 796	-
40	1 746	2 439	3 305	4 368	5 656	7 193	9 006	11 120	-
45	1 564	2 211	3 021	4 020	5 233	6 685	8 404	10 415	-
50	1 400	1 995	2 743	3 670	4 802	6 164	7 782	9 683	-
55	1 255	1 792	2 472	3 321	4 366	5 631	7 143	8 927	-
60	-	1 606	2 212	2 977	3 928	5 090	6 489	8 151	-
65	-	-	-	2 640	3 491	4 543	5 823	7 356	-
70	-	-	-	-	-	3 994	5 149	6 547	-

Power input in W

35	1 034	1 173	1 299	1 408	1 494	1 551	1 574	1 557	-
40	1 066	1 214	1 353	1 476	1 579	1 655	1 699	1 706	-
45	1 088	1 248	1 400	1 540	1 661	1 758	1 825	1 858	-
50	1 102	1 274	1 442	1 599	1 740	1 859	1 951	2 011	-
55	1 105	1 292	1 476	1 652	1 815	1 958	2 077	2 165	-
60	-	1 301	1 504	1 700	1 886	2 055	2 201	2 319	-
65	-	-	-	1 742	1 952	2 148	2 324	2 474	-
70	-	-	-	-	-	2 238	2 444	2 628	-

Current consumption in A

35	3.14	3.25	3.35	3.44	3.51	3.56	3.57	3.56	-
40	3.17	3.29	3.41	3.52	3.61	3.68	3.72	3.73	-
45	3.19	3.33	3.47	3.59	3.70	3.80	3.87	3.92	-
50	3.20	3.36	3.51	3.66	3.80	3.92	4.02	4.10	-
55	3.20	3.37	3.55	3.72	3.88	4.03	4.17	4.28	-
60	-	3.38	3.57	3.77	3.96	4.14	4.31	4.46	-
65	-	-	-	3.81	4.03	4.24	4.44	4.63	-
70	-	-	-	-	-	4.33	4.57	4.80	-

Mass flow in kg/h

35	43	59	77	99	125	156	191	232	-
40	41	56	74	96	122	152	187	227	-
45	38	53	71	92	118	147	182	222	-
50	36	50	67	88	113	142	176	216	-
55	34	48	64	84	108	137	170	208	-
60	-	45	61	80	103	131	163	200	-
65	-	-	-	76	98	124	155	192	-
70	-	-	-	-	-	118	147	182	-

Coefficient of performance (C.O.P.)

35	1.88	2.28	2.76	3.35	4.06	4.95	6.09	7.58	-
40	1.64	2.01	2.44	2.96	3.58	4.35	5.30	6.52	-
45	1.44	1.77	2.16	2.61	3.15	3.80	4.60	5.61	-
50	1.27	1.57	1.90	2.30	2.76	3.32	3.99	4.82	-
55	1.14	1.39	1.67	2.01	2.41	2.88	3.44	4.12	-
60	-	1.23	1.47	1.75	2.08	2.48	2.95	3.51	-
65	-	-	-	1.52	1.79	2.12	2.51	2.97	-
70	-	-	-	-	-	1.78	2.11	2.49	-

Nominal performance at to = 7.2 °C, tc = 54.4 °C

Cooling capacity	4 951	W
Power input	1 871	W
Current consumption	3.94	A
Mass flow	121	kg/h
C.O.P.	2.65	

Pressure switch settings

Maximum HP switch setting	22.6	bar(g)
Minimum LP switch setting	0.2	bar(g)
LP pump down setting	0.5	bar(g)

Sound power data

Sound power level	0	dB(A)
With acoustic hood	0	dB(A)

to: Evaporating temperature at dew point

tc: Condensing temperature at dew point

Rating conditions : Superheat = 11.1 K , Subcooling = 8.3 K

All performance data +/- 5%

Danfoss can accept no responsibility for possible errors in catalogues, brochures and other printed material. Danfoss reserves the right to alter its products without notice. This also applies to products already on order provided that such alternations can be made without subsequential changes being necessary in specifications already agreed. All trademarks in this material are property of the respective companies. Danfoss, the Danfoss logotype and Maneurop are trademarks of Danfoss A/S. All rights reserved.

**Performance data at 50 Hz, EN 12900 rating conditions**
**R404A**

Cond. temp. in °C (tc)	Evaporating temperature in °C (to)							
	-30	-25	-20	-15	-10	-5	0	5

**Cooling capacity in W**

30	1 757	2 453	3 305	4 335	5 561	7 003	8 682	10 616	12 826
35	1 510	2 155	2 945	3 899	5 036	6 376	7 940	9 747	11 816
40	1 271	1 864	2 589	3 464	4 509	5 745	7 191	8 867	10 793
45	1 044	1 582	2 238	3 031	3 983	5 111	6 437	7 980	9 759
50	828	1 308	1 893	2 603	3 457	4 476	5 679	7 085	8 715
55	-	1 046	1 557	2 180	2 935	3 841	4 917	6 185	7 663
60	-	796	1 231	1 764	2 417	3 207	4 155	5 281	6 605

**Power input in W**

30	1 246	1 436	1 610	1 767	1 904	2 021	2 115	2 187	2 234
35	1 243	1 456	1 653	1 834	1 997	2 141	2 265	2 367	2 445
40	1 227	1 463	1 685	1 892	2 083	2 256	2 409	2 542	2 654
45	1 198	1 458	1 706	1 941	2 160	2 363	2 548	2 714	2 860
50	1 154	1 441	1 716	1 980	2 229	2 464	2 682	2 882	3 063
55	-	1 410	1 715	2 008	2 289	2 557	2 809	3 045	3 263
60	-	1 367	1 701	2 026	2 340	2 642	2 930	3 203	3 460

**Current consumption in A**

30	3.07	3.27	3.49	3.71	3.91	4.08	4.20	4.27	4.26
35	3.08	3.30	3.54	3.78	4.01	4.21	4.37	4.47	4.50
40	3.08	3.33	3.59	3.86	4.12	4.36	4.57	4.72	4.80
45	3.06	3.33	3.63	3.94	4.25	4.53	4.79	4.99	5.14
50	3.00	3.31	3.65	4.01	4.36	4.70	5.02	5.28	5.49
55	-	3.25	3.64	4.05	4.46	4.86	5.24	5.58	5.86
60	-	3.13	3.58	4.04	4.52	4.99	5.44	5.86	6.22

**Mass flow in kg/h**

30	55	76	99	127	159	195	237	284	337
35	51	71	95	122	153	189	230	277	329
40	47	66	90	116	147	183	223	269	321
45	42	62	84	111	141	176	216	261	312
50	37	56	79	104	134	169	208	253	303
55	-	51	72	98	127	161	199	243	292
60	-	45	66	91	119	152	190	233	281

**Coefficient of performance (C.O.P.)**

30	1.41	1.71	2.05	2.45	2.92	3.47	4.10	4.85	5.74
35	1.21	1.48	1.78	2.13	2.52	2.98	3.51	4.12	4.83
40	1.04	1.27	1.54	1.83	2.16	2.55	2.98	3.49	4.07
45	0.87	1.08	1.31	1.56	1.84	2.16	2.53	2.94	3.41
50	0.72	0.91	1.10	1.31	1.55	1.82	2.12	2.46	2.85
55	-	0.74	0.91	1.09	1.28	1.50	1.75	2.03	2.35
60	-	0.58	0.72	0.87	1.03	1.21	1.42	1.65	1.91

**Nominal performance at to = -10 °C, tc = 45 °C**

Cooling capacity	3 983	W
Power input	2 160	W
Current consumption	4.25	A
Mass flow	141	kg/h
C.O.P.	1.84	


**Pressure switch settings**

Maximum HP switch setting	27.7	bar(g)
Minimum LP switch setting	0.2	bar(g)
LP pump down setting	0.9	bar(g)

**Sound power data**

Sound power level	71	dB(A)
With acoustic hood	64	dB(A)

to: Evaporating temperature at dew point

tc: Condensing temperature at dew point

Rating conditions : Superheat = 10 K , Subcooling = 0 K

All performance data +/- 5%



**Performance data at 50 Hz, ARI rating conditions**
**R404A**

Cond. temp. in °C (tc)	Evaporating temperature in °C (to)								
	-30	-25	-20	-15	-10	-5	0	5	10

**Cooling capacity in W**

30	1 956	2 723	3 660	4 788	6 128	7 701	9 527	11 627	14 021
35	1 699	2 417	3 293	4 347	5 600	7 073	8 787	10 762	13 019
40	1 449	2 117	2 930	3 907	5 070	6 441	8 040	9 888	12 006
45	1 210	1 825	2 570	3 468	4 540	5 806	7 288	9 007	10 983
50	981	1 541	2 218	3 034	4 011	5 171	6 534	8 123	9 957
55	-	1 267	1 874	2 607	3 488	4 540	5 784	7 242	8 934
60	-	1 006	1 541	2 190	2 976	3 921	5 047	6 375	7 929

**Power input in W**

30	1 246	1 436	1 610	1 767	1 904	2 021	2 115	2 187	2 234
35	1 243	1 456	1 653	1 834	1 997	2 141	2 265	2 367	2 445
40	1 227	1 463	1 685	1 892	2 083	2 256	2 409	2 542	2 654
45	1 198	1 458	1 706	1 941	2 160	2 363	2 548	2 714	2 860
50	1 154	1 441	1 716	1 980	2 229	2 464	2 682	2 882	3 063
55	-	1 410	1 715	2 008	2 289	2 557	2 809	3 045	3 263
60	-	1 367	1 701	2 026	2 340	2 642	2 930	3 203	3 460

**Current consumption in A**

30	3.07	3.27	3.49	3.71	3.91	4.08	4.20	4.27	4.26
35	3.08	3.30	3.54	3.78	4.01	4.21	4.37	4.47	4.50
40	3.08	3.33	3.59	3.86	4.12	4.36	4.57	4.72	4.80
45	3.06	3.33	3.63	3.94	4.25	4.53	4.79	4.99	5.14
50	3.00	3.31	3.65	4.01	4.36	4.70	5.02	5.28	5.49
55	-	3.25	3.64	4.05	4.46	4.86	5.24	5.58	5.86
60	-	3.13	3.58	4.04	4.52	4.99	5.44	5.86	6.22

**Mass flow in kg/h**

30	55	75	99	126	158	194	235	282	335
35	51	71	94	121	152	188	229	275	327
40	46	66	89	116	147	182	222	268	319
45	42	61	84	110	140	175	215	260	310
50	37	56	78	104	134	168	207	251	301
55	-	50	72	97	126	160	198	241	290
60	-	45	66	90	119	151	189	231	280

**Coefficient of performance (C.O.P.)**

30	1.57	1.90	2.27	2.71	3.22	3.81	4.50	5.32	6.28
35	1.37	1.66	1.99	2.37	2.80	3.30	3.88	4.55	5.33
40	1.18	1.45	1.74	2.06	2.43	2.86	3.34	3.89	4.52
45	1.01	1.25	1.51	1.79	2.10	2.46	2.86	3.32	3.84
50	0.85	1.07	1.29	1.53	1.80	2.10	2.44	2.82	3.25
55	-	0.90	1.09	1.30	1.52	1.78	2.06	2.38	2.74
60	-	0.74	0.91	1.08	1.27	1.48	1.72	1.99	2.29

**Nominal performance at to = -10 °C, tc = 45 °C**

Cooling capacity	4 540	W
Power input	2 160	W
Current consumption	4.25	A
Mass flow	140	kg/h
C.O.P.	2.10	

**Pressure switch settings**

Maximum HP switch setting	27.7	bar(g)
Minimum LP switch setting	0.2	bar(g)
LP pump down setting	0.9	bar(g)

**Sound power data**

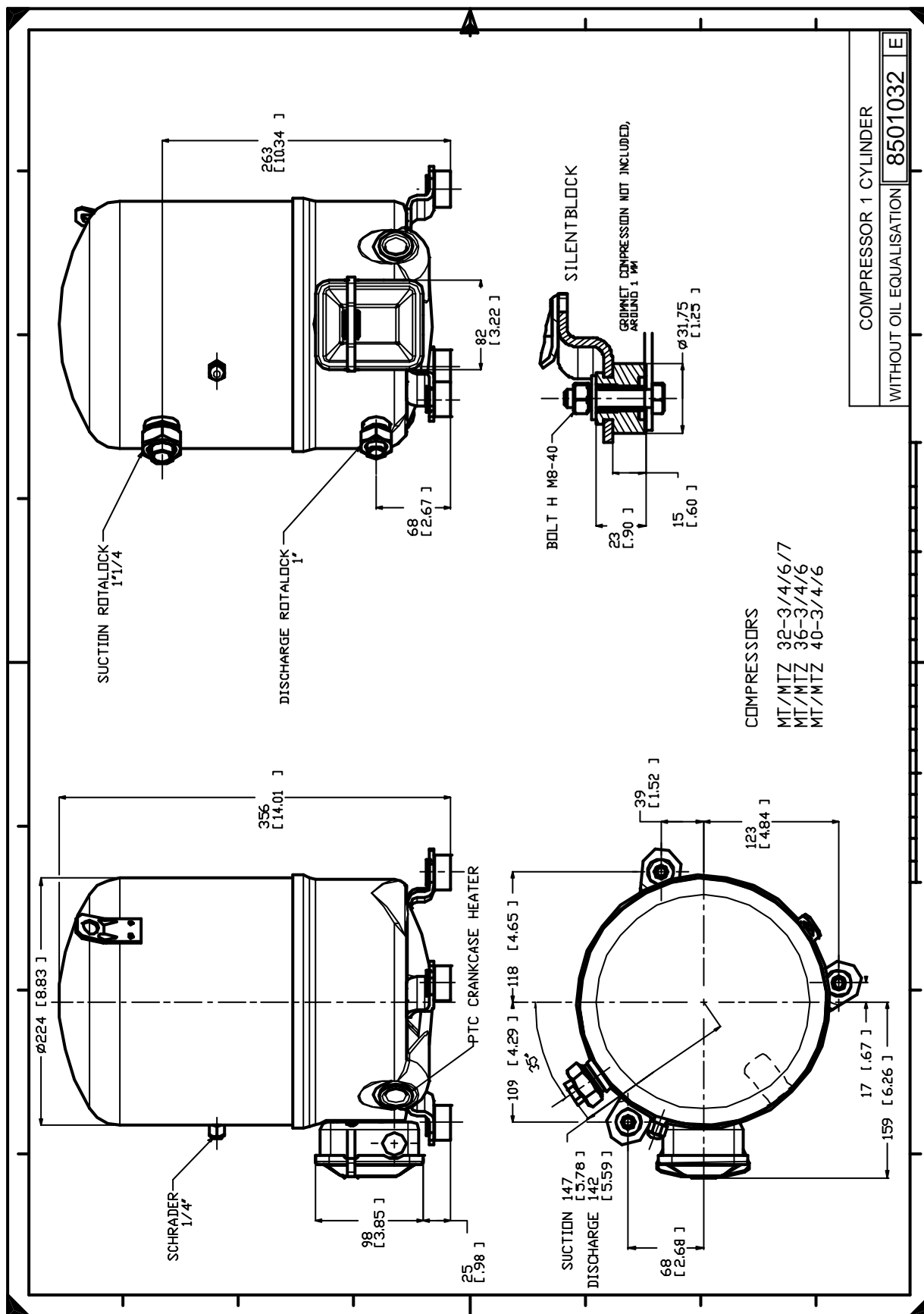
Sound power level	71	dB(A)
With acoustic hood	64	dB(A)

to: Evaporating temperature at dew point

tc: Condensing temperature at dew point

Rating conditions : Superheat = 11.1 K , Subcooling = 8.3 K

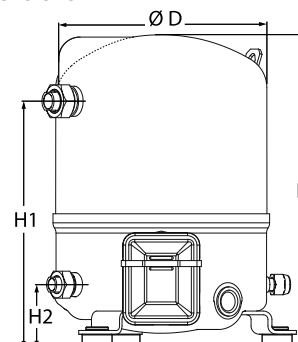
All performance data +/- 5%



Danfoss can accept no responsibility for possible errors in catalogues, brochures and other printed material. Danfoss reserves the right to alter its products without notice. This also applies to products already on order provided that such alternations can be made without subsequential changes being necessary in specifications already agreed. All trademarks in this material are property of the respective companies. Danfoss, the Danfoss logotype and Maneurop are trademarks of Danfoss A/S. All rights reserved.

**General Characteristics**

Model number (on compressor nameplate)		<b>MTZ32JF4BVE</b>
Code number for Singlepack*		MTZ32-4VI
Code number for Industrial pack**		MTZ32-4VM
Drawing number		8501025f
Suction and discharge connections		Rotolock
Suction connection		1-1/4" Rotolock
Discharge connection		1" Rotolock
Suction connection with supplied sleeve		5/8" ODF
Discharge connection with supplied sleeve		1/2" ODF
Oil sight glass		Threaded
Oil equalisation connection		3/8" flare SAE
Oil drain connection		None
LP gauge port		Schrader
IPR valve		30 bar / 8 bar
Cylinders		1
Swept volume		53,86 cm <sup>3</sup> /rev
Displacement @ Nominal speed		9.4 m <sup>3</sup> /h @ 2900 rpm - 11.3 m <sup>3</sup> /h @ 3500 rpm
Net weight		24 kg
Oil charge		0,95 litre, POE - 160PZ
Maximum system test pressure Low Side / High side		25 bar(g) / 30 bar(g)
Maximum differential test pressure		30 bar
Maximum number of starts per hour		12
Refrigerant charge limit		2,5 kg
Approved refrigerants		R404A, R507A, R134a, R407C

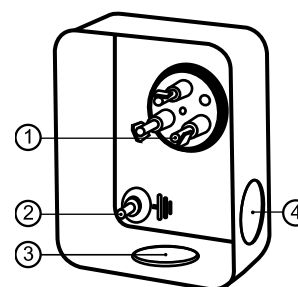
**Dimensions**


D=224 mm

H=356 mm

H1=263 mm

H2=68 mm

**Terminal box**


IP55 (with cable gland)

1: Spade connectors 1/4"

2: Earth M4-12

3: Knock-out Ø 21 mm (0.83")

4: Hole Ø 21 mm (0.83")

**Electrical Characteristics**

Nominal voltage	380-400V/3/50Hz - 460V/3/60Hz
Voltage range	340-440 V @ 50Hz - 414-506 V @ 60Hz
Winding resistance (between phases) +/- 7% at 25°C	6.15 Ω
Maximum Continuous Current (MCC)	8 A
Locked Rotor Amps (LRA)	25 A
Motor protection	Internal overload protector

**Recommended Installation torques**

Oil sight glass	50 Nm
Power connections / Earth connection	Nm / 2 Nm
Mounting bolts	15 Nm

**Parts shipped with compressor**

Mounting kit with grommets, bolts, nuts, sleeves and washers
Suction & Discharge solder sleeves, rotolock nuts and gaskets (shipped with rotolock version only)
Initial oil charge
Installation instructions

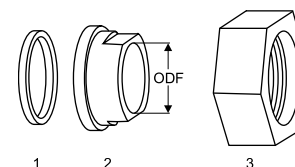
**Approvals** : CE certified, UL certified (file SA6873), CCC certified

\*Singlepack: Compressor in cardboard box

\*\*Industrial pack: 12 Unboxed compressors on pallet (order per multiples of 12)

**Rotolock accessories, suction side**
**Code no.**

Solder sleeve, P09 (1-1/4" Rotolock, 5/8" ODF)	8153011
Angle adapter, C09 (1-1/4" Rotolock, 5/8" ODF)	8168009
Rotolock valve, V09 (1-1/4" Rotolock, 5/8" ODF)	8168033
Gasket, 1-1/4"	8156131

**Gaskets, sleeves and nuts**


- 1: Gasket
- 2: Solder sleeve
- 3: Rotolock nut

**Rotolock accessories, discharge side**
**Code no.**

Solder sleeve, P06 (1" Rotolock, 1/2" ODF)	8153007
Angle adapter, C06 (1" Rotolock, 1/2" ODF)	8168007
Rotolock valve, V06 (1" Rotolock, 1/2" ODF)	8168031
Gasket, 1"	8156130

**Rotolock accessories, sets**
**Code no.**

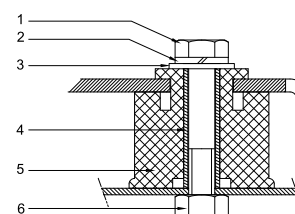
Angle adapter set, C09 (1-1/4"~5/8"), C06 (1"~1/2")	7703012
Valve set, V09 (1-1/4"~5/8"), V06 (1"~1/2")	7703005
Gasket set, 1", 1-1/4", 1-3/4", OSG gaskets black & white	8156009

**Oil / lubricants**
**Code no.**

POE lubricant, 160PZ, 1 litre can	7754019
POE lubricant, 160PZ, 2 litre can	7754020

**Crankcase heaters**
**Code no.**

PTC heater 27W	120Z0459
Belt type crankcase heater, 54 W, 230 V, CE mark, UL	7773106
Belt type crankcase heater, 54 W, 400 V, UL	7773013

**Mounting kit**


- 1: Bolt (3x)
- 2: Lock washer (3x)
- 3: Flat washer (3x)
- 4: Sleeve (3x)
- 5: Grommet (3x)
- 6: Nut (3x)

**Miscellaneous accessories**
**Code no.**

Electronic soft start kit, MCI 15 C	7705006
Acoustic hood for 1 cylinder compressor	7755001
Oil equalisation nut	8153127

**Spare parts**
**Code no.**

Mounting kit for 1 and 2 cylinder compressor, including 3 grommets, 3 bolts	8156001
Oil sight glass with gaskets (black & white)	8156019
Gasket for oil sight glass (black chloroprene)	8156145
Service kit for terminal box 80 x 96 mm, including 1 cover, 1 clamp	8156134

**Performance data at 50 Hz, EN 12900 rating conditions**
**R407C**

Cond. temp. in °C (tc)	Evaporating temperature in °C (to)							
	-15	-10	-5	0	5	10	15	

**Cooling capacity in W**

35	3 135	4 200	5 458	6 931	8 644	10 620	12 882	-	-
40	2 809	3 815	4 997	6 377	7 980	9 827	11 943	-	-
45	2 480	3 428	4 534	5 821	7 313	9 032	11 003	-	-
50	-	3 040	4 071	5 265	6 646	8 238	10 063	-	-
55	-	-	3 609	4 710	5 981	7 445	9 125	-	-
60	-	-	-	4 159	5 320	6 656	8 191	-	-
65	-	-	-	3 614	4 664	5 873	7 263	-	-

**Power input in W**

35	1 449	1 615	1 749	1 857	1 942	2 011	2 068	-	-
40	1 487	1 689	1 856	1 991	2 101	2 190	2 262	-	-
45	1 503	1 748	1 953	2 124	2 265	2 381	2 476	-	-
50	-	1 786	2 038	2 250	2 429	2 579	2 704	-	-
55	-	-	2 103	2 365	2 588	2 779	2 940	-	-
60	-	-	-	2 463	2 738	2 976	3 181	-	-
65	-	-	-	2 539	2 873	3 165	3 421	-	-

**Current consumption in A**

35	3.29	3.47	3.64	3.78	3.91	4.01	4.10	-	-
40	3.34	3.57	3.78	3.95	4.11	4.24	4.35	-	-
45	3.38	3.66	3.91	4.13	4.33	4.50	4.65	-	-
50	-	3.72	4.04	4.32	4.57	4.79	4.98	-	-
55	-	-	4.14	4.49	4.81	5.09	5.33	-	-
60	-	-	-	4.65	5.04	5.39	5.71	-	-
65	-	-	-	4.80	5.27	5.70	6.10	-	-

**Mass flow in kg/h**

35	68	90	115	143	176	213	255	-	-
40	64	86	110	138	170	207	248	-	-
45	60	81	105	133	164	200	240	-	-
50	-	76	100	127	158	192	231	-	-
55	-	-	94	121	151	185	222	-	-
60	-	-	-	114	144	176	213	-	-
65	-	-	-	107	136	168	203	-	-

**Coefficient of performance (C.O.P.)**

35	2.16	2.60	3.12	3.73	4.45	5.28	6.23	-	-
40	1.89	2.26	2.69	3.20	3.80	4.49	5.28	-	-
45	1.65	1.96	2.32	2.74	3.23	3.79	4.44	-	-
50	-	1.70	2.00	2.34	2.74	3.19	3.72	-	-
55	-	-	1.72	1.99	2.31	2.68	3.10	-	-
60	-	-	-	1.69	1.94	2.24	2.58	-	-
65	-	-	-	1.42	1.62	1.86	2.12	-	-

**Nominal performance at to = 5 °C, tc = 50 °C**

Cooling capacity	6 646	W
Power input	2 429	W
Current consumption	4.57	A
Mass flow	158	kg/h
C.O.P.	2.74	


**Pressure switch settings**

Maximum HP switch setting	29.4	bar(g)
Minimum LP switch setting	0.2	bar(g)
LP pump down setting	1.3	bar(g)

**Sound power data**

Sound power level	0	dB(A)
With acoustic hood	0	dB(A)

to: Evaporating temperature at dew point

tc: Condensing temperature at dew point

Rating conditions : Superheat = 10 K , Subcooling = 0 K

All performance data +/- 5%

**Performance data at 50 Hz, ARI rating conditions**
**R407C**

Cond. temp. in °C (tc)	Evaporating temperature in °C (to)							
	-15	-10	-5	0	5	10	15	

**Cooling capacity in W**

35	3 375	4 515	5 860	7 434	9 261	11 366	13 773	-	-
40	3 040	4 123	5 393	6 875	8 591	10 568	12 830	-	-
45	2 701	3 728	4 923	6 312	7 919	9 768	11 884	-	-
50	-	3 330	4 452	5 748	7 245	8 967	10 939	-	-
55	-	-	3 980	5 186	6 573	8 168	9 996	-	-
60	-	-	-	4 626	5 905	7 374	9 058	-	-
65	-	-	-	4 072	5 244	6 587	8 129	-	-

**Power input in W**

35	1 449	1 615	1 749	1 857	1 942	2 011	2 068	-	-
40	1 487	1 689	1 856	1 991	2 101	2 190	2 262	-	-
45	1 503	1 748	1 953	2 124	2 265	2 381	2 476	-	-
50	-	1 786	2 038	2 250	2 429	2 579	2 704	-	-
55	-	-	2 103	2 365	2 588	2 779	2 940	-	-
60	-	-	-	2 463	2 738	2 976	3 181	-	-
65	-	-	-	2 539	2 873	3 165	3 421	-	-

**Current consumption in A**

35	3.29	3.47	3.64	3.78	3.91	4.01	4.10	-	-
40	3.34	3.57	3.78	3.95	4.11	4.24	4.35	-	-
45	3.38	3.66	3.91	4.13	4.33	4.50	4.65	-	-
50	-	3.72	4.04	4.32	4.57	4.79	4.98	-	-
55	-	-	4.14	4.49	4.81	5.09	5.33	-	-
60	-	-	-	4.65	5.04	5.39	5.71	-	-
65	-	-	-	4.80	5.27	5.70	6.10	-	-

**Mass flow in kg/h**

35	68	89	114	142	175	212	254	-	-
40	64	85	110	137	169	205	246	-	-
45	59	81	105	132	163	198	238	-	-
50	-	76	100	126	157	191	230	-	-
55	-	-	94	120	150	183	221	-	-
60	-	-	-	114	143	175	212	-	-
65	-	-	-	107	135	167	202	-	-

**Coefficient of performance (C.O.P.)**

35	2.33	2.80	3.35	4.00	4.77	5.65	6.66	-	-
40	2.04	2.44	2.91	3.45	4.09	4.83	5.67	-	-
45	1.80	2.13	2.52	2.97	3.50	4.10	4.80	-	-
50	-	1.86	2.18	2.55	2.98	3.48	4.05	-	-
55	-	-	1.89	2.19	2.54	2.94	3.40	-	-
60	-	-	-	1.88	2.16	2.48	2.85	-	-
65	-	-	-	1.60	1.83	2.08	2.38	-	-

**Nominal performance at to = 7.2 °C, tc = 54.4 °C**

Cooling capacity	7 335	W
Power input	2 655	W
Current consumption	4.90	A
Mass flow	165	kg/h
C.O.P.	2.76	

**Pressure switch settings**

Maximum HP switch setting	29.4	bar(g)
Minimum LP switch setting	0.2	bar(g)
LP pump down setting	1.3	bar(g)

**Sound power data**

Sound power level	0	dB(A)
With acoustic hood	0	dB(A)

to: Evaporating temperature at dew point

tc: Condensing temperature at dew point

Rating conditions : Superheat = 11.1 K , Subcooling = 8.3 K

All performance data +/- 5%

**Performance data at 50 Hz, EN 12900 rating conditions**
**R134a**

Cond. temp. in °C (tc)	Evaporating temperature in °C (to)							
	-15	-10	-5	0	5	10	15	20

**Cooling capacity in W**

35	1 794	2 474	3 326	4 372	5 639	7 150	8 931	11 006	-
40	1 604	2 244	3 046	4 033	5 230	6 662	8 354	10 330	-
45	1 428	2 022	2 768	3 691	4 813	6 160	7 757	9 628	-
50	1 268	1 811	2 497	3 348	4 389	5 646	7 142	8 902	-
55	1 128	1 614	2 233	3 007	3 962	5 122	6 511	8 154	-
60	-	1 433	1 979	2 672	3 535	4 592	5 869	7 389	-
65	-	-	-	2 344	3 110	4 059	5 218	6 609	-
70	-	-	-	-	-	3 526	4 560	5 816	-

**Power input in W**

35	1 034	1 173	1 299	1 408	1 494	1 551	1 574	1 557	-
40	1 066	1 214	1 353	1 476	1 579	1 655	1 699	1 706	-
45	1 088	1 248	1 400	1 540	1 661	1 758	1 825	1 858	-
50	1 102	1 274	1 442	1 599	1 740	1 859	1 951	2 011	-
55	1 105	1 292	1 476	1 652	1 815	1 958	2 077	2 165	-
60	-	1 301	1 504	1 700	1 886	2 055	2 201	2 319	-
65	-	-	-	1 742	1 952	2 148	2 324	2 474	-
70	-	-	-	-	-	2 238	2 444	2 628	-

**Current consumption in A**

35	3.14	3.25	3.35	3.44	3.51	3.56	3.57	3.56	-
40	3.17	3.29	3.41	3.52	3.61	3.68	3.72	3.73	-
45	3.19	3.33	3.47	3.59	3.70	3.80	3.87	3.92	-
50	3.20	3.36	3.51	3.66	3.80	3.92	4.02	4.10	-
55	3.20	3.37	3.55	3.72	3.88	4.03	4.17	4.28	-
60	-	3.38	3.57	3.77	3.96	4.14	4.31	4.46	-
65	-	-	-	3.81	4.03	4.24	4.44	4.63	-
70	-	-	-	-	-	4.33	4.57	4.80	-

**Mass flow in kg/h**

35	44	59	77	99	126	156	192	233	-
40	41	56	74	96	122	153	188	229	-
45	38	53	71	93	118	148	183	223	-
50	36	50	68	89	114	143	177	217	-
55	34	48	65	85	109	138	171	210	-
60	-	46	61	81	104	132	164	202	-
65	-	-	-	77	99	125	156	193	-
70	-	-	-	-	-	118	148	183	-

**Coefficient of performance (C.O.P.)**

35	1.73	2.11	2.56	3.10	3.77	4.61	5.67	7.07	-
40	1.50	1.85	2.25	2.73	3.31	4.03	4.92	6.05	-
45	1.31	1.62	1.98	2.40	2.90	3.50	4.25	5.18	-
50	1.15	1.42	1.73	2.09	2.52	3.04	3.66	4.43	-
55	1.02	1.25	1.51	1.82	2.18	2.62	3.14	3.77	-
60	-	1.10	1.32	1.57	1.87	2.24	2.67	3.19	-
65	-	-	-	1.35	1.59	1.89	2.25	2.67	-
70	-	-	-	-	-	1.58	1.87	2.21	-

**Nominal performance at to = 5 °C, tc = 50 °C**

Cooling capacity	4 389	W
Power input	1 740	W
Current consumption	3.80	A
Mass flow	114	kg/h
C.O.P.	2.52	

**Pressure switch settings**

Maximum HP switch setting	22.6	bar(g)
Minimum LP switch setting	0.2	bar(g)
LP pump down setting	0.5	bar(g)

**Sound power data**

Sound power level	0	dB(A)
With acoustic hood	0	dB(A)

to: Evaporating temperature at dew point

tc: Condensing temperature at dew point

Rating conditions : Superheat = 10 K , Subcooling = 0 K

All performance data +/- 5%

Danfoss can accept no responsibility for possible errors in catalogues, brochures and other printed material. Danfoss reserves the right to alter its products without notice. This also applies to products already on order provided that such alternations can be made without subsequential changes being necessary in specifications already agreed. All trademarks in this material are property of the respective companies. Danfoss, the Danfoss logotype and Maneurop are trademarks of Danfoss A/S. All rights reserved.

Performance data at 50 Hz, ARI rating conditions

R134a

Cond. temp. in °C (tc)	Evaporating temperature in °C (to)							
	-15	-10	-5	0	5	10	15	20

Cooling capacity in W

35	1 943	2 676	3 590	4 713	6 069	7 684	9 585	11 796	-
40	1 746	2 439	3 305	4 368	5 656	7 193	9 006	11 120	-
45	1 564	2 211	3 021	4 020	5 233	6 685	8 404	10 415	-
50	1 400	1 995	2 743	3 670	4 802	6 164	7 782	9 683	-
55	1 255	1 792	2 472	3 321	4 366	5 631	7 143	8 927	-
60	-	1 606	2 212	2 977	3 928	5 090	6 489	8 151	-
65	-	-	-	2 640	3 491	4 543	5 823	7 356	-
70	-	-	-	-	-	3 994	5 149	6 547	-

Power input in W

35	1 034	1 173	1 299	1 408	1 494	1 551	1 574	1 557	-
40	1 066	1 214	1 353	1 476	1 579	1 655	1 699	1 706	-
45	1 088	1 248	1 400	1 540	1 661	1 758	1 825	1 858	-
50	1 102	1 274	1 442	1 599	1 740	1 859	1 951	2 011	-
55	1 105	1 292	1 476	1 652	1 815	1 958	2 077	2 165	-
60	-	1 301	1 504	1 700	1 886	2 055	2 201	2 319	-
65	-	-	-	1 742	1 952	2 148	2 324	2 474	-
70	-	-	-	-	-	2 238	2 444	2 628	-

Current consumption in A

35	3.14	3.25	3.35	3.44	3.51	3.56	3.57	3.56	-
40	3.17	3.29	3.41	3.52	3.61	3.68	3.72	3.73	-
45	3.19	3.33	3.47	3.59	3.70	3.80	3.87	3.92	-
50	3.20	3.36	3.51	3.66	3.80	3.92	4.02	4.10	-
55	3.20	3.37	3.55	3.72	3.88	4.03	4.17	4.28	-
60	-	3.38	3.57	3.77	3.96	4.14	4.31	4.46	-
65	-	-	-	3.81	4.03	4.24	4.44	4.63	-
70	-	-	-	-	-	4.33	4.57	4.80	-

Mass flow in kg/h

35	43	59	77	99	125	156	191	232	-
40	41	56	74	96	122	152	187	227	-
45	38	53	71	92	118	147	182	222	-
50	36	50	67	88	113	142	176	216	-
55	34	48	64	84	108	137	170	208	-
60	-	45	61	80	103	131	163	200	-
65	-	-	-	76	98	124	155	192	-
70	-	-	-	-	-	118	147	182	-

Coefficient of performance (C.O.P.)

35	1.88	2.28	2.76	3.35	4.06	4.95	6.09	7.58	-
40	1.64	2.01	2.44	2.96	3.58	4.35	5.30	6.52	-
45	1.44	1.77	2.16	2.61	3.15	3.80	4.60	5.61	-
50	1.27	1.57	1.90	2.30	2.76	3.32	3.99	4.82	-
55	1.14	1.39	1.67	2.01	2.41	2.88	3.44	4.12	-
60	-	1.23	1.47	1.75	2.08	2.48	2.95	3.51	-
65	-	-	-	1.52	1.79	2.12	2.51	2.97	-
70	-	-	-	-	-	1.78	2.11	2.49	-

Nominal performance at to = 7.2 °C, tc = 54.4 °C

Cooling capacity	4 951	W
Power input	1 871	W
Current consumption	3.94	A
Mass flow	121	kg/h
C.O.P.	2.65	

Pressure switch settings

Maximum HP switch setting	22.6	bar(g)
Minimum LP switch setting	0.2	bar(g)
LP pump down setting	0.5	bar(g)

Sound power data

Sound power level	0	dB(A)
With acoustic hood	0	dB(A)

to: Evaporating temperature at dew point

tc: Condensing temperature at dew point

Rating conditions : Superheat = 11.1 K , Subcooling = 8.3 K

All performance data +/- 5%

Danfoss can accept no responsibility for possible errors in catalogues, brochures and other printed material. Danfoss reserves the right to alter its products without notice. This also applies to products already on order provided that such alternations can be made without subsequential changes being necessary in specifications already agreed. All trademarks in this material are property of the respective companies. Danfoss, the Danfoss logotype and Maneurop are trademarks of Danfoss A/S. All rights reserved.



**Performance data at 50 Hz, EN 12900 rating conditions**
**R404A**

Cond. temp. in °C (tc)	Evaporating temperature in °C (to)							
	-30	-25	-20	-15	-10	-5	0	5

**Cooling capacity in W**

30	1 757	2 453	3 305	4 335	5 561	7 003	8 682	10 616	12 826
35	1 510	2 155	2 945	3 899	5 036	6 376	7 940	9 747	11 816
40	1 271	1 864	2 589	3 464	4 509	5 745	7 191	8 867	10 793
45	1 044	1 582	2 238	3 031	3 983	5 111	6 437	7 980	9 759
50	828	1 308	1 893	2 603	3 457	4 476	5 679	7 085	8 715
55	-	1 046	1 557	2 180	2 935	3 841	4 917	6 185	7 663
60	-	796	1 231	1 764	2 417	3 207	4 155	5 281	6 605

**Power input in W**

30	1 246	1 436	1 610	1 767	1 904	2 021	2 115	2 187	2 234
35	1 243	1 456	1 653	1 834	1 997	2 141	2 265	2 367	2 445
40	1 227	1 463	1 685	1 892	2 083	2 256	2 409	2 542	2 654
45	1 198	1 458	1 706	1 941	2 160	2 363	2 548	2 714	2 860
50	1 154	1 441	1 716	1 980	2 229	2 464	2 682	2 882	3 063
55	-	1 410	1 715	2 008	2 289	2 557	2 809	3 045	3 263
60	-	1 367	1 701	2 026	2 340	2 642	2 930	3 203	3 460

**Current consumption in A**

30	3.07	3.27	3.49	3.71	3.91	4.08	4.20	4.27	4.26
35	3.08	3.30	3.54	3.78	4.01	4.21	4.37	4.47	4.50
40	3.08	3.33	3.59	3.86	4.12	4.36	4.57	4.72	4.80
45	3.06	3.33	3.63	3.94	4.25	4.53	4.79	4.99	5.14
50	3.00	3.31	3.65	4.01	4.36	4.70	5.02	5.28	5.49
55	-	3.25	3.64	4.05	4.46	4.86	5.24	5.58	5.86
60	-	3.13	3.58	4.04	4.52	4.99	5.44	5.86	6.22

**Mass flow in kg/h**

30	55	76	99	127	159	195	237	284	337
35	51	71	95	122	153	189	230	277	329
40	47	66	90	116	147	183	223	269	321
45	42	62	84	111	141	176	216	261	312
50	37	56	79	104	134	169	208	253	303
55	-	51	72	98	127	161	199	243	292
60	-	45	66	91	119	152	190	233	281

**Coefficient of performance (C.O.P.)**

30	1.41	1.71	2.05	2.45	2.92	3.47	4.10	4.85	5.74
35	1.21	1.48	1.78	2.13	2.52	2.98	3.51	4.12	4.83
40	1.04	1.27	1.54	1.83	2.16	2.55	2.98	3.49	4.07
45	0.87	1.08	1.31	1.56	1.84	2.16	2.53	2.94	3.41
50	0.72	0.91	1.10	1.31	1.55	1.82	2.12	2.46	2.85
55	-	0.74	0.91	1.09	1.28	1.50	1.75	2.03	2.35
60	-	0.58	0.72	0.87	1.03	1.21	1.42	1.65	1.91

**Nominal performance at to = -10 °C, tc = 45 °C**

Cooling capacity	3 983	W
Power input	2 160	W
Current consumption	4.25	A
Mass flow	141	kg/h
C.O.P.	1.84	


**Pressure switch settings**

Maximum HP switch setting	27.7	bar(g)
Minimum LP switch setting	0.2	bar(g)
LP pump down setting	0.9	bar(g)

**Sound power data**

Sound power level	71	dB(A)
With acoustic hood	64	dB(A)

to: Evaporating temperature at dew point

tc: Condensing temperature at dew point

Rating conditions : Superheat = 10 K , Subcooling = 0 K

All performance data +/- 5%

**Performance data at 50 Hz, ARI rating conditions**
**R404A**

Cond. temp. in °C (tc)	Evaporating temperature in °C (to)								
	-30	-25	-20	-15	-10	-5	0	5	10

**Cooling capacity in W**

30	1 956	2 723	3 660	4 788	6 128	7 701	9 527	11 627	14 021
35	1 699	2 417	3 293	4 347	5 600	7 073	8 787	10 762	13 019
40	1 449	2 117	2 930	3 907	5 070	6 441	8 040	9 888	12 006
45	1 210	1 825	2 570	3 468	4 540	5 806	7 288	9 007	10 983
50	981	1 541	2 218	3 034	4 011	5 171	6 534	8 123	9 957
55	-	1 267	1 874	2 607	3 488	4 540	5 784	7 242	8 934
60	-	1 006	1 541	2 190	2 976	3 921	5 047	6 375	7 929

**Power input in W**

30	1 246	1 436	1 610	1 767	1 904	2 021	2 115	2 187	2 234
35	1 243	1 456	1 653	1 834	1 997	2 141	2 265	2 367	2 445
40	1 227	1 463	1 685	1 892	2 083	2 256	2 409	2 542	2 654
45	1 198	1 458	1 706	1 941	2 160	2 363	2 548	2 714	2 860
50	1 154	1 441	1 716	1 980	2 229	2 464	2 682	2 882	3 063
55	-	1 410	1 715	2 008	2 289	2 557	2 809	3 045	3 263
60	-	1 367	1 701	2 026	2 340	2 642	2 930	3 203	3 460

**Current consumption in A**

30	3.07	3.27	3.49	3.71	3.91	4.08	4.20	4.27	4.26
35	3.08	3.30	3.54	3.78	4.01	4.21	4.37	4.47	4.50
40	3.08	3.33	3.59	3.86	4.12	4.36	4.57	4.72	4.80
45	3.06	3.33	3.63	3.94	4.25	4.53	4.79	4.99	5.14
50	3.00	3.31	3.65	4.01	4.36	4.70	5.02	5.28	5.49
55	-	3.25	3.64	4.05	4.46	4.86	5.24	5.58	5.86
60	-	3.13	3.58	4.04	4.52	4.99	5.44	5.86	6.22

**Mass flow in kg/h**

30	55	75	99	126	158	194	235	282	335
35	51	71	94	121	152	188	229	275	327
40	46	66	89	116	147	182	222	268	319
45	42	61	84	110	140	175	215	260	310
50	37	56	78	104	134	168	207	251	301
55	-	50	72	97	126	160	198	241	290
60	-	45	66	90	119	151	189	231	280

**Coefficient of performance (C.O.P.)**

30	1.57	1.90	2.27	2.71	3.22	3.81	4.50	5.32	6.28
35	1.37	1.66	1.99	2.37	2.80	3.30	3.88	4.55	5.33
40	1.18	1.45	1.74	2.06	2.43	2.86	3.34	3.89	4.52
45	1.01	1.25	1.51	1.79	2.10	2.46	2.86	3.32	3.84
50	0.85	1.07	1.29	1.53	1.80	2.10	2.44	2.82	3.25
55	-	0.90	1.09	1.30	1.52	1.78	2.06	2.38	2.74
60	-	0.74	0.91	1.08	1.27	1.48	1.72	1.99	2.29

**Nominal performance at to = -10 °C, tc = 45 °C**

Cooling capacity	4 540	W
Power input	2 160	W
Current consumption	4.25	A
Mass flow	140	kg/h
C.O.P.	2.10	

**Pressure switch settings**

Maximum HP switch setting	27.7	bar(g)
Minimum LP switch setting	0.2	bar(g)
LP pump down setting	0.9	bar(g)

**Sound power data**

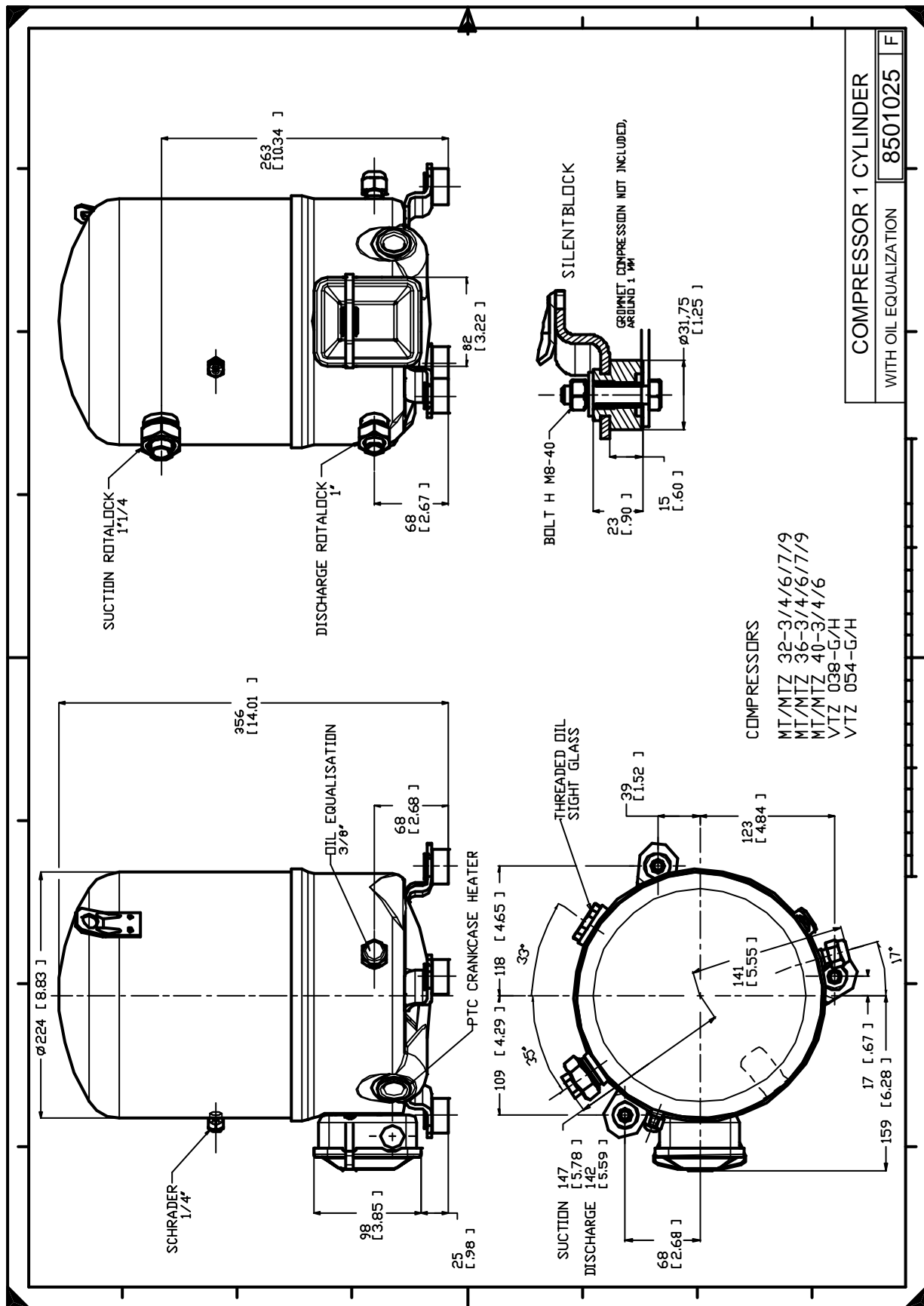
Sound power level	71	dB(A)
With acoustic hood	64	dB(A)

to: Evaporating temperature at dew point

tc: Condensing temperature at dew point

Rating conditions : Superheat = 11.1 K , Subcooling = 8.3 K

All performance data +/- 5%



Danfoss can accept no responsibility for possible errors in catalogues, brochures and other printed material. Danfoss reserves the right to alter its products without notice. This also applies to products already on order provided that such alternations can be made without subsequential changes being necessary in specifications already agreed. All trademarks in this material are property of the respective companies. Danfoss, the Danfoss logotype and Maneurop are trademarks of Danfoss A/S. All rights reserved.