



Datasheets

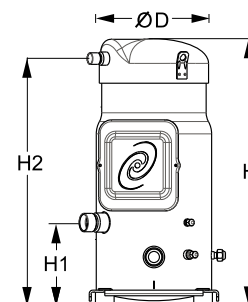
Performer[®] scroll compressors **SM / SY / SZ / SH**



General Characteristics

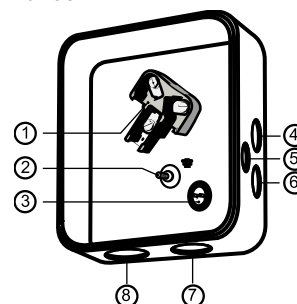
| Model number (on compressor nameplate) | SZ125S4RC | SZ125S4CC |
|---------------------------------------------------|-----------------------------------------------------------------------|----------------|
| Code number for Singlepack* | SZ125-4RI | SZ125-4CAI |
| Code number for Industrial pack** | SZ125-4RM | SZ125-4CAM |
| Drawing number | 8551121b | 8551112b |
| Suction and discharge connections | Rotolock | Brazed |
| Suction connection | 1-3/4" Rotolock | 1-3/8" ODF |
| Discharge connection | 1-1/4" Rotolock | 7/8" ODF |
| Suction connection with supplied sleeve | 1-1/8" ODF | |
| Discharge connection with supplied sleeve | 3/4" ODF | |
| Oil sight glass | Threaded | Threaded |
| Oil equalisation connection | 3/8" flare SAE | 3/8" flare SAE |
| Oil drain connection | 1/4" flare | 1/4" flare |
| LP gauge port | Schrader | Schrader |
| IPR valve | None | None |
| Swept volume | 166,6 cm ³ /rev | |
| Displacement @ Nominal speed | 29.0 m ³ /h @ 2900 rpm - 35.0 m ³ /h @ 3500 rpm | |
| Net weight | 78 kg | |
| Oil charge | 3,8 litre, POE - 160SZ | |
| Maximum system test pressure Low Side / High side | 25 bar(g) / 32 bar(g) | |
| Maximum differential test pressure | 24 bar | |
| Maximum number of starts per hour | 12 | |
| Refrigerant charge limit | 11 kg | |
| Approved refrigerants | R407C, R134a, R404A, R507A | |

Dimensions



D=253 mm
H=579 mm
H1=180 mm
H2=536 mm

Terminal box



IP54 (with cable gland)

- 1: Power connection, 3 x 4.8 mm (3/16")
- 2: Earth M5
- 3: Thermostat connector
- 4: Knock-out Ø 22 mm (7/8") for 1/2" conduit
- 5: Knock-out Ø 16.5 mm (0.65")
- 6: Knock-out Ø 20.5 mm (0.81")
- 7: Double knock-out Ø 32.1 mm (1.26") & Ø 25.4 mm (1")
- 8: Double knock-out Ø 44 mm (1-3/4") for 1-1/4" conduit & Ø 34 mm (1-3/8") for 1" conduit

Electrical Characteristics

| | |
|----------------------------------------------------|-----------------------------------------------------|
| Nominal voltage | 380-400V/3/50Hz - 460V/3/60Hz |
| Voltage range | 340-440 V @ 50Hz - 414-506 V @ 60Hz |
| Winding resistance (between phases) +/- 7% at 25°C | 1.16 Ω |
| Maximum Must Trip current (MMT) | 25 A |
| Locked Rotor Amps (LRA) | 120 A |
| Motor protection | Internal thermostat, ext. overload protector needed |

Recommended Installation torques

| | |
|--------------------------------------|-------------|
| Suction Rotolock nut or valve | 110 Nm |
| Discharge Rotolock nut or valve | 90 Nm |
| Oil sight glass | 50 Nm |
| Power connections / Earth connection | 3 Nm / 2 Nm |
| Terminal box cover screws | 2,3 Nm |
| Mounting bolts | 21 Nm |

Parts shipped with compressor

| |
|--------------------------------------------------------------|
| Mounting kit with grommets, bolts, nuts, sleeves and washers |
| Initial oil charge |
| Installation instructions |

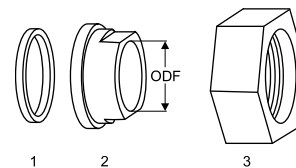
Approvals : CE certified, UL certified (file SA6873), -

*Singlepack: Compressor in cardboard box

**Industrial pack: 6 Unboxed compressors on pallet (order per multiples of 6)

Rotolock accessories, suction side
Code no.

| | |
|---------------------------------------------------|---------|
| Solder sleeve, P02 (1-3/4" Rotolock, 1-1/8" ODF) | 8153004 |
| Solder sleeve, P10 (1-3/4" Rotolock, 1-3/8" ODF) | 8153003 |
| Angle adapter, C02 (1-3/4" Rotolock, 1-1/8" ODF) | 8168005 |
| Rotolock valve, V02 (1-3/4" Rotolock, 1-1/8" ODF) | 8168028 |
| Rotolock valve, V10 (1-3/4" Rotolock, 1-3/8" ODF) | 8168022 |
| Gasket, 1-3/4" | 8156132 |

Gaskets, sleeves and nuts


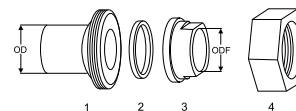
- 1: Gasket
- 2: Solder sleeve
- 3: Rotolock nut

Rotolock accessories, discharge side
Code no.

| | |
|-------------------------------------------------|---------|
| Solder sleeve, P04 (1-1/4" Rotolock, 3/4" ODF) | 8153008 |
| Angle adapter, C04 (1-1/4" Rotolock, 3/4" ODF) | 8168006 |
| Rotolock valve, V04 (1-1/4" Rotolock, 3/4" ODF) | 8168029 |
| Rotolock valve, V05 (1-1/4" Rotolock, 7/8" ODF) | 8168030 |
| Gasket, 1-1/4" | 8156131 |

Rotolock accessories, sets
Code no.

| | |
|--------------------------------------------------------------------------------------|---------|
| Solder sleeve adapter set (1-3/4" Rotolock, 1-3/8" ODF), (1-1/4" Rotolock, 7/8" ODF) | 7765006 |
| Angle adapter set, C02 (1-3/4"~1-1/8"), C04 (1-1/4"~3/4") | 7703014 |
| Valve set, V02 (1-3/4"~1-1/8"), V04 (1-1/4"~3/4") | 7703009 |
| Gasket set, 1-1/4", 1-3/4", 2-1/4", OSG gaskets black & white | 8156013 |

Solder sleeve adapter set


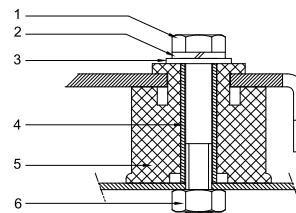
- 1: Rotolock adapter (Suc & Dis)
- 2: Gasket (Suc & Dis)
- 3: Solder sleeve (Suc & Dis)
- 4: Rotolock nut (Suc & Dis)

Oil / lubricants
Code no.

| | |
|-----------------------------------|---------|
| POE lubricant, 160SZ, 1 litre can | 7754023 |
| POE lubricant, 160SZ, 2 litre can | 7754024 |

Crankcase heaters
Code no.

| | |
|-------------------------------------------------------------------|----------|
| Surface sump heater + bottom insulation, 48 W, 24 V, CE mark, UL | 120Z0363 |
| Surface sump heater + bottom insulation, 48 W, 230 V, CE mark, UL | 120Z0384 |
| Surface sump heater + bottom insulation, 48 W, 400 V, CE mark, UL | 120Z0385 |
| Surface sump heater + bottom insulation, 48 W, 460 V, CE mark | 120Z0386 |
| Belt type crankcase heater, 65 W, 460 V, CE mark, UL | 120Z0466 |
| Belt type crankcase heater, 65 W, 230 V, CE mark, UL | 7773107 |
| Belt type crankcase heater, 65 W, 400 V, CE mark, UL | 7773117 |
| Belt type crankcase heater, 65 W, 400 V, CE mark, UL | 120Z0039 |

Mounting kit


- 1: Bolt (4x)
- 2: Lock washer (4x)
- 3: Flat washer (4x)
- 4: Sleeve (4x)
- 5: Grommet (4x)
- 6: Nut (4x)

Miscellaneous accessories
Code no.

| | |
|-------------------------------------------------------------|---------|
| Electronic soft start kit, MCI 25 C | 7705007 |
| Soft start kit with statoric resistors, prewired box, SCR03 | 7705001 |
| Acoustic hood for scroll compressor S115-S125 | 7755009 |
| Discharge thermostat kit | 7750009 |

Spare parts
Code no.

| | |
|----------------------------------------------------------------------------------------------------------------------------------------|---------|
| Mounting kit for 1 scroll compressor including 4 grommets, 4 sleeves, 4 bolts, 4 washers | 8156138 |
| Mounting kit for 1 scroll compressor including 4 grommets, 4 sleeves, 4 bolts, 4 washers, 2 rotolock nuts, 2 solder sleeves, 2 gaskets | 8156146 |
| Oil sight glass with gaskets (black & white) | 8156019 |
| Gasket for oil sight glass (white teflon) | 8156129 |
| Terminal box 186 x 198 mm, incl cover | 8156139 |
| T block connector 60 x 75 mm | 8173021 |

Performance data at 50 Hz, EN 12900 rating conditions
R407C

| Cond. temp. in °C (tc) | Evaporating temperature in °C (to) | | | | | | | |
|---------------------------|------------------------------------|-----|-----|----|---|---|----|----|
| | -20 | -15 | -10 | -5 | 0 | 5 | 10 | 15 |

Cooling capacity in W

| | | | | | | | | | |
|----|--------|--------|--------|--------|--------|--------|--------|--------|---|
| 30 | 10 736 | 13 781 | 17 403 | 21 662 | 26 618 | 32 329 | 38 856 | 46 257 | - |
| 35 | 10 006 | 12 964 | 16 470 | 20 583 | 25 363 | 30 869 | 37 161 | 44 296 | - |
| 40 | 9 236 | 12 087 | 15 457 | 19 405 | 23 990 | 29 270 | 35 306 | 42 157 | - |
| 45 | - | 11 144 | 14 359 | 18 122 | 22 492 | 27 527 | 33 288 | 39 832 | - |
| 50 | - | - | 13 171 | 16 729 | 20 864 | 25 635 | 31 100 | 37 317 | - |
| 55 | - | - | - | 15 223 | 19 103 | 23 588 | 28 736 | 34 606 | - |
| 60 | - | - | - | - | 17 203 | 21 381 | 26 191 | 31 691 | - |
| 65 | - | - | - | - | 15 159 | 19 008 | 23 458 | 28 564 | - |

Power input in W

| | | | | | | | | | |
|----|-------|-------|-------|-------|--------|--------|--------|--------|---|
| 30 | 5 106 | 5 136 | 5 158 | 5 172 | 5 172 | 5 158 | 5 125 | 5 072 | - |
| 35 | 5 689 | 5 717 | 5 737 | 5 747 | 5 745 | 5 726 | 5 689 | 5 630 | - |
| 40 | 6 371 | 6 396 | 6 414 | 6 421 | 6 415 | 6 392 | 6 349 | 6 285 | - |
| 45 | - | 7 188 | 7 203 | 7 206 | 7 196 | 7 168 | 7 120 | 7 049 | - |
| 50 | - | - | 8 117 | 8 117 | 8 101 | 8 068 | 8 015 | 7 938 | - |
| 55 | - | - | - | 9 166 | 9 146 | 9 107 | 9 047 | 8 963 | - |
| 60 | - | - | - | - | 10 343 | 10 298 | 10 231 | 10 140 | - |
| 65 | - | - | - | - | 11 706 | 11 654 | 11 581 | 11 482 | - |

Current consumption in A

| | | | | | | | | | |
|----|-------|-------|-------|-------|-------|-------|-------|-------|---|
| 30 | 10.59 | 10.63 | 10.67 | 10.69 | 10.69 | 10.68 | 10.63 | 10.56 | - |
| 35 | 11.32 | 11.36 | 11.39 | 11.41 | 11.41 | 11.38 | 11.33 | 11.25 | - |
| 40 | 12.20 | 12.24 | 12.27 | 12.28 | 12.28 | 12.24 | 12.19 | 12.10 | - |
| 45 | - | 13.31 | 13.33 | 13.34 | 13.32 | 13.28 | 13.22 | 13.12 | - |
| 50 | - | - | 14.60 | 14.60 | 14.58 | 14.53 | 14.45 | 14.34 | - |
| 55 | - | - | - | 16.09 | 16.06 | 16.00 | 15.92 | 15.80 | - |
| 60 | - | - | - | - | 17.80 | 17.74 | 17.64 | 17.51 | - |
| 65 | - | - | - | - | 19.82 | 19.75 | 19.64 | 19.50 | - |

Mass flow in kg/h

| | | | | | | | | | |
|----|-----|-----|-----|-----|-----|-----|-----|-----|---|
| 30 | 224 | 282 | 350 | 428 | 517 | 618 | 732 | 860 | - |
| 35 | 219 | 278 | 347 | 425 | 515 | 617 | 732 | 860 | - |
| 40 | 213 | 273 | 342 | 422 | 512 | 614 | 729 | 859 | - |
| 45 | - | 267 | 336 | 416 | 507 | 610 | 725 | 854 | - |
| 50 | - | - | 328 | 409 | 500 | 602 | 718 | 847 | - |
| 55 | - | - | - | 398 | 489 | 592 | 708 | 837 | - |
| 60 | - | - | - | - | 475 | 578 | 693 | 822 | - |
| 65 | - | - | - | - | 457 | 559 | 674 | 803 | - |

Coefficient of performance (C.O.P.)

| | | | | | | | | | |
|----|------|------|------|------|------|------|------|------|---|
| 30 | 2.10 | 2.68 | 3.37 | 4.19 | 5.15 | 6.27 | 7.58 | 9.12 | - |
| 35 | 1.76 | 2.27 | 2.87 | 3.58 | 4.42 | 5.39 | 6.53 | 7.87 | - |
| 40 | 1.45 | 1.89 | 2.41 | 3.02 | 3.74 | 4.58 | 5.56 | 6.71 | - |
| 45 | - | 1.55 | 1.99 | 2.51 | 3.13 | 3.84 | 4.68 | 5.65 | - |
| 50 | - | - | 1.62 | 2.06 | 2.58 | 3.18 | 3.88 | 4.70 | - |
| 55 | - | - | - | 1.66 | 2.09 | 2.59 | 3.18 | 3.86 | - |
| 60 | - | - | - | - | 1.66 | 2.08 | 2.56 | 3.13 | - |
| 65 | - | - | - | - | 1.29 | 1.63 | 2.03 | 2.49 | - |

Nominal performance at to = 5 °C, tc = 50 °C

| | | |
|---------------------|--------|------|
| Cooling capacity | 25 635 | W |
| Power input | 8 068 | W |
| Current consumption | 14.53 | A |
| Mass flow | 602 | kg/h |
| C.O.P. | 3.18 | |

Pressure switch settings

| | | |
|---------------------------|------|--------|
| Maximum HP switch setting | 29.5 | bar(g) |
| Minimum LP switch setting | 0.5 | bar(g) |
| LP pump down setting | 1 | bar(g) |

Sound power data

| | | |
|--------------------|----|-------|
| Sound power level | 78 | dB(A) |
| With acoustic hood | 70 | dB(A) |

to: Evaporating temperature at dew point

tc: Condensing temperature at dew point

Rating conditions : Superheat = 10 K , Subcooling = 0 K

All performance data +/- 5%

Danfoss can accept no responsibility for possible errors in catalogues, brochures and other printed material. Danfoss reserves the right to alter its products without notice. This also applies to products already on order provided that such alternations can be made without subsequential changes being necessary in specifications already agreed. All trademarks in this material are property of the respective companies. Danfoss, the Danfoss logotype and Performer are trademarks of Danfoss A/S. All rights reserved.

Performance data at 50 Hz, ARI rating conditions

R407C

| Cond. temp. in °C (tc) | Evaporating temperature in °C (to) | | | | | | | |
|---------------------------|------------------------------------|-----|-----|----|---|---|----|----|
| | -20 | -15 | -10 | -5 | 0 | 5 | 10 | 15 |

Cooling capacity in W

| | | | | | | | | | |
|----|--------|--------|--------|--------|--------|--------|--------|--------|---|
| 30 | 11 514 | 14 763 | 18 623 | 23 156 | 28 424 | 34 489 | 41 411 | 49 254 | - |
| 35 | 10 784 | 13 954 | 17 706 | 22 101 | 27 203 | 33 073 | 39 771 | 47 361 | - |
| 40 | 10 010 | 13 081 | 16 705 | 20 944 | 25 860 | 31 514 | 37 969 | 45 286 | - |
| 45 | - | 12 138 | 15 615 | 19 677 | 24 388 | 29 808 | 35 999 | 43 023 | - |
| 50 | - | - | 14 428 | 18 295 | 22 780 | 27 946 | 33 854 | 40 566 | - |
| 55 | - | - | - | 16 790 | 21 031 | 25 923 | 31 528 | 37 909 | - |
| 60 | - | - | - | - | 19 134 | 23 732 | 29 016 | 35 045 | - |
| 65 | - | - | - | - | 17 082 | 21 368 | 26 309 | 31 967 | - |

Power input in W

| | | | | | | | | | |
|----|-------|-------|-------|-------|--------|--------|--------|--------|---|
| 30 | 5 106 | 5 136 | 5 158 | 5 172 | 5 172 | 5 158 | 5 125 | 5 072 | - |
| 35 | 5 689 | 5 717 | 5 737 | 5 747 | 5 745 | 5 726 | 5 689 | 5 630 | - |
| 40 | 6 371 | 6 396 | 6 414 | 6 421 | 6 415 | 6 392 | 6 349 | 6 285 | - |
| 45 | - | 7 188 | 7 203 | 7 206 | 7 196 | 7 168 | 7 120 | 7 049 | - |
| 50 | - | - | 8 117 | 8 117 | 8 101 | 8 068 | 8 015 | 7 938 | - |
| 55 | - | - | - | 9 166 | 9 146 | 9 107 | 9 047 | 8 963 | - |
| 60 | - | - | - | - | 10 343 | 10 298 | 10 231 | 10 140 | - |
| 65 | - | - | - | - | 11 706 | 11 654 | 11 581 | 11 482 | - |

Current consumption in A

| | | | | | | | | | |
|----|-------|-------|-------|-------|-------|-------|-------|-------|---|
| 30 | 10.59 | 10.63 | 10.67 | 10.69 | 10.69 | 10.68 | 10.63 | 10.56 | - |
| 35 | 11.32 | 11.36 | 11.39 | 11.41 | 11.41 | 11.38 | 11.33 | 11.25 | - |
| 40 | 12.20 | 12.24 | 12.27 | 12.28 | 12.28 | 12.24 | 12.19 | 12.10 | - |
| 45 | - | 13.31 | 13.33 | 13.34 | 13.32 | 13.28 | 13.22 | 13.12 | - |
| 50 | - | - | 14.60 | 14.60 | 14.58 | 14.53 | 14.45 | 14.34 | - |
| 55 | - | - | - | 16.09 | 16.06 | 16.00 | 15.92 | 15.80 | - |
| 60 | - | - | - | - | 17.80 | 17.74 | 17.64 | 17.51 | - |
| 65 | - | - | - | - | 19.82 | 19.75 | 19.64 | 19.50 | - |

Mass flow in kg/h

| | | | | | | | | | |
|----|-----|-----|-----|-----|-----|-----|-----|-----|---|
| 30 | 223 | 281 | 348 | 425 | 514 | 614 | 728 | 855 | - |
| 35 | 218 | 277 | 345 | 423 | 512 | 613 | 727 | 855 | - |
| 40 | 212 | 272 | 340 | 419 | 509 | 611 | 725 | 853 | - |
| 45 | - | 265 | 335 | 414 | 504 | 606 | 721 | 849 | - |
| 50 | - | - | 327 | 406 | 497 | 599 | 714 | 842 | - |
| 55 | - | - | - | 396 | 486 | 589 | 703 | 832 | - |
| 60 | - | - | - | - | 472 | 574 | 689 | 817 | - |
| 65 | - | - | - | - | 454 | 556 | 670 | 798 | - |

Coefficient of performance (C.O.P.)

| | | | | | | | | | |
|----|------|------|------|------|------|------|------|------|---|
| 30 | 2.25 | 2.87 | 3.61 | 4.48 | 5.50 | 6.69 | 8.08 | 9.71 | - |
| 35 | 1.90 | 2.44 | 3.09 | 3.85 | 4.74 | 5.78 | 6.99 | 8.41 | - |
| 40 | 1.57 | 2.05 | 2.60 | 3.26 | 4.03 | 4.93 | 5.98 | 7.21 | - |
| 45 | - | 1.69 | 2.17 | 2.73 | 3.39 | 4.16 | 5.06 | 6.10 | - |
| 50 | - | - | 1.78 | 2.25 | 2.81 | 3.46 | 4.22 | 5.11 | - |
| 55 | - | - | - | 1.83 | 2.30 | 2.85 | 3.48 | 4.23 | - |
| 60 | - | - | - | - | 1.85 | 2.30 | 2.84 | 3.46 | - |
| 65 | - | - | - | - | 1.46 | 1.83 | 2.27 | 2.78 | - |

Nominal performance at to = 7.2 °C, tc = 54.4 °C

| | | |
|---------------------|--------|------|
| Cooling capacity | 28 565 | W |
| Power input | 8 952 | W |
| Current consumption | 15.78 | A |
| Mass flow | 639 | kg/h |
| C.O.P. | 3.19 | |

Pressure switch settings

| | | |
|---------------------------|------|--------|
| Maximum HP switch setting | 29.5 | bar(g) |
| Minimum LP switch setting | 0.5 | bar(g) |
| LP pump down setting | 1 | bar(g) |

Sound power data

| | | |
|--------------------|----|-------|
| Sound power level | 78 | dB(A) |
| With acoustic hood | 70 | dB(A) |

to: Evaporating temperature at dew point

tc: Condensing temperature at dew point

Rating conditions : Superheat = 11.1 K , Subcooling = 8.3 K

All performance data +/- 5%

Danfoss can accept no responsibility for possible errors in catalogues, brochures and other printed material. Danfoss reserves the right to alter its products without notice. This also applies to products already on order provided that such alternations can be made without subsequential changes being necessary in specifications already agreed. All trademarks in this material are property of the respective companies. Danfoss, the Danfoss logotype and Performer are trademarks of Danfoss A/S. All rights reserved.

Performance data at 50 Hz, EN 12900 rating conditions
R134a

| Cond. temp. in °C (tc) | Evaporating temperature in °C (to) | | | | | | | |
|---------------------------|------------------------------------|-----|----|---|---|----|----|--|
| | -15 | -10 | -5 | 0 | 5 | 10 | 15 | |

Cooling capacity in W

| | | | | | | | | | |
|----|-------|--------|--------|--------|--------|--------|--------|---|---|
| 35 | 8 881 | 11 397 | 14 330 | 17 720 | 21 605 | 26 024 | 31 018 | - | - |
| 40 | 8 292 | 10 725 | 13 556 | 16 825 | 20 571 | 24 832 | 29 649 | - | - |
| 45 | 7 682 | 10 019 | 12 737 | 15 874 | 19 469 | 23 561 | 28 189 | - | - |
| 50 | 7 050 | 9 281 | 11 874 | 14 868 | 18 300 | 22 211 | 26 640 | - | - |
| 55 | - | 8 513 | 10 970 | 13 808 | 17 067 | 20 785 | 25 002 | - | - |
| 60 | - | - | 10 025 | 12 697 | 15 770 | 19 283 | 23 275 | - | - |
| 65 | - | - | - | 11 534 | 14 410 | 17 706 | 21 461 | - | - |
| 70 | - | - | - | 10 323 | 12 988 | 16 054 | 19 559 | - | - |

Power input in W

| | | | | | | | | | |
|----|-------|-------|-------|-------|-------|-------|-------|---|---|
| 35 | 4 051 | 4 063 | 4 065 | 4 055 | 4 030 | 3 989 | 3 928 | - | - |
| 40 | 4 506 | 4 521 | 4 526 | 4 521 | 4 501 | 4 465 | 4 410 | - | - |
| 45 | 5 018 | 5 036 | 5 046 | 5 045 | 5 030 | 5 001 | 4 953 | - | - |
| 50 | 5 591 | 5 613 | 5 627 | 5 631 | 5 623 | 5 600 | 5 559 | - | - |
| 55 | - | 6 256 | 6 275 | 6 285 | 6 283 | 6 266 | 6 234 | - | - |
| 60 | - | - | 6 994 | 7 009 | 7 014 | 7 005 | 6 980 | - | - |
| 65 | - | - | - | 7 809 | 7 821 | 7 820 | 7 804 | - | - |
| 70 | - | - | - | 8 689 | 8 709 | 8 716 | 8 709 | - | - |

Current consumption in A

| | | | | | | | | | |
|----|-------|-------|-------|-------|-------|-------|-------|---|---|
| 35 | 9.24 | 9.27 | 9.28 | 9.28 | 9.24 | 9.18 | 9.07 | - | - |
| 40 | 9.70 | 9.74 | 9.76 | 9.76 | 9.73 | 9.67 | 9.57 | - | - |
| 45 | 10.26 | 10.30 | 10.33 | 10.33 | 10.31 | 10.26 | 10.17 | - | - |
| 50 | 10.93 | 10.97 | 11.00 | 11.01 | 11.00 | 10.95 | 10.87 | - | - |
| 55 | - | 11.76 | 11.79 | 11.81 | 11.80 | 11.76 | 11.69 | - | - |
| 60 | - | - | 12.71 | 12.73 | 12.73 | 12.70 | 12.64 | - | - |
| 65 | - | - | - | 13.79 | 13.80 | 13.78 | 13.73 | - | - |
| 70 | - | - | - | 15.00 | 15.02 | 15.01 | 14.97 | - | - |

Mass flow in kg/h

| | | | | | | | | | |
|----|-----|-----|-----|-----|-----|-----|-----|---|---|
| 35 | 215 | 270 | 333 | 403 | 482 | 570 | 667 | - | - |
| 40 | 211 | 267 | 330 | 401 | 481 | 569 | 667 | - | - |
| 45 | 207 | 263 | 327 | 398 | 478 | 567 | 665 | - | - |
| 50 | 201 | 258 | 323 | 395 | 475 | 564 | 662 | - | - |
| 55 | - | 253 | 317 | 389 | 470 | 559 | 657 | - | - |
| 60 | - | - | 310 | 383 | 463 | 552 | 651 | - | - |
| 65 | - | - | - | 375 | 455 | 544 | 642 | - | - |
| 70 | - | - | - | 365 | 445 | 534 | 632 | - | - |

Coefficient of performance (C.O.P.)

| | | | | | | | | | |
|----|------|------|------|------|------|------|------|---|---|
| 35 | 2.19 | 2.81 | 3.53 | 4.37 | 5.36 | 6.52 | 7.90 | - | - |
| 40 | 1.84 | 2.37 | 2.99 | 3.72 | 4.57 | 5.56 | 6.72 | - | - |
| 45 | 1.53 | 1.99 | 2.52 | 3.15 | 3.87 | 4.71 | 5.69 | - | - |
| 50 | 1.26 | 1.65 | 2.11 | 2.64 | 3.25 | 3.97 | 4.79 | - | - |
| 55 | - | 1.36 | 1.75 | 2.20 | 2.72 | 3.32 | 4.01 | - | - |
| 60 | - | - | 1.43 | 1.81 | 2.25 | 2.75 | 3.33 | - | - |
| 65 | - | - | - | 1.48 | 1.84 | 2.26 | 2.75 | - | - |
| 70 | - | - | - | 1.19 | 1.49 | 1.84 | 2.25 | - | - |

Nominal performance at to = 5 °C, tc = 50 °C

| | | |
|---------------------|--------|------|
| Cooling capacity | 18 300 | W |
| Power input | 5 623 | W |
| Current consumption | 11.00 | A |
| Mass flow | 475 | kg/h |
| C.O.P. | 3.25 | |

Pressure switch settings

| | | |
|---------------------------|------|--------|
| Maximum HP switch setting | 20.5 | bar(g) |
| Minimum LP switch setting | 0.5 | bar(g) |
| LP pump down setting | 0.5 | bar(g) |

Sound power data

| | | |
|--------------------|---|-------|
| Sound power level | 0 | dB(A) |
| With acoustic hood | 0 | dB(A) |

to: Evaporating temperature at dew point

tc: Condensing temperature at dew point

Rating conditions : Superheat = 10 K , Subcooling = 0 K

All performance data +/- 5%

Danfoss can accept no responsibility for possible errors in catalogues, brochures and other printed material. Danfoss reserves the right to alter its products without notice. This also applies to products already on order provided that such alternations can be made without subsequential changes being necessary in specifications already agreed. All trademarks in this material are property of the respective companies. Danfoss, the Danfoss logotype and Performer are trademarks of Danfoss A/S. All rights reserved.

Performance data at 50 Hz, ARI rating conditions

R134a

| Cond. temp. in °C (tc) | Evaporating temperature in °C (to) | | | | | | | |
|---------------------------|------------------------------------|-----|----|---|---|----|----|--|
| | -15 | -10 | -5 | 0 | 5 | 10 | 15 | |

Cooling capacity in W

| | | | | | | | | | |
|----|-------|--------|--------|--------|--------|--------|--------|---|---|
| 35 | 9 619 | 12 324 | 15 471 | 19 100 | 23 253 | 27 969 | 33 291 | - | - |
| 40 | 9 031 | 11 658 | 14 709 | 18 224 | 22 245 | 26 811 | 31 963 | - | - |
| 45 | 8 418 | 10 956 | 13 900 | 17 290 | 21 166 | 25 570 | 30 542 | - | - |
| 50 | 7 782 | 10 220 | 13 045 | 16 298 | 20 019 | 24 249 | 29 030 | - | - |
| 55 | - | 9 450 | 12 145 | 15 249 | 18 804 | 22 849 | 27 426 | - | - |
| 60 | - | - | 11 202 | 14 146 | 17 523 | 21 372 | 25 734 | - | - |
| 65 | - | - | - | 12 990 | 16 177 | 19 818 | 23 954 | - | - |
| 70 | - | - | - | 11 782 | 14 767 | 18 189 | 22 087 | - | - |

Power input in W

| | | | | | | | | | |
|----|-------|-------|-------|-------|-------|-------|-------|---|---|
| 35 | 4 051 | 4 063 | 4 065 | 4 055 | 4 030 | 3 989 | 3 928 | - | - |
| 40 | 4 506 | 4 521 | 4 526 | 4 521 | 4 501 | 4 465 | 4 410 | - | - |
| 45 | 5 018 | 5 036 | 5 046 | 5 045 | 5 030 | 5 001 | 4 953 | - | - |
| 50 | 5 591 | 5 613 | 5 627 | 5 631 | 5 623 | 5 600 | 5 559 | - | - |
| 55 | - | 6 256 | 6 275 | 6 285 | 6 283 | 6 266 | 6 234 | - | - |
| 60 | - | - | 6 994 | 7 009 | 7 014 | 7 005 | 6 980 | - | - |
| 65 | - | - | - | 7 809 | 7 821 | 7 820 | 7 804 | - | - |
| 70 | - | - | - | 8 689 | 8 709 | 8 716 | 8 709 | - | - |

Current consumption in A

| | | | | | | | | | |
|----|-------|-------|-------|-------|-------|-------|-------|---|---|
| 35 | 9.24 | 9.27 | 9.28 | 9.28 | 9.24 | 9.18 | 9.07 | - | - |
| 40 | 9.70 | 9.74 | 9.76 | 9.76 | 9.73 | 9.67 | 9.57 | - | - |
| 45 | 10.26 | 10.30 | 10.33 | 10.33 | 10.31 | 10.26 | 10.17 | - | - |
| 50 | 10.93 | 10.97 | 11.00 | 11.01 | 11.00 | 10.95 | 10.87 | - | - |
| 55 | - | 11.76 | 11.79 | 11.81 | 11.80 | 11.76 | 11.69 | - | - |
| 60 | - | - | 12.71 | 12.73 | 12.73 | 12.70 | 12.64 | - | - |
| 65 | - | - | - | 13.79 | 13.80 | 13.78 | 13.73 | - | - |
| 70 | - | - | - | 15.00 | 15.02 | 15.01 | 14.97 | - | - |

Mass flow in kg/h

| | | | | | | | | | |
|----|-----|-----|-----|-----|-----|-----|-----|---|---|
| 35 | 214 | 269 | 331 | 401 | 479 | 567 | 664 | - | - |
| 40 | 210 | 266 | 329 | 399 | 478 | 566 | 663 | - | - |
| 45 | 206 | 262 | 325 | 396 | 476 | 564 | 662 | - | - |
| 50 | 200 | 257 | 321 | 392 | 472 | 561 | 658 | - | - |
| 55 | - | 251 | 316 | 387 | 467 | 556 | 654 | - | - |
| 60 | - | - | 309 | 381 | 461 | 549 | 647 | - | - |
| 65 | - | - | - | 373 | 453 | 541 | 639 | - | - |
| 70 | - | - | - | 363 | 443 | 531 | 628 | - | - |

Coefficient of performance (C.O.P.)

| | | | | | | | | | |
|----|------|------|------|------|------|------|------|---|---|
| 35 | 2.37 | 3.03 | 3.81 | 4.71 | 5.77 | 7.01 | 8.48 | - | - |
| 40 | 2.00 | 2.58 | 3.25 | 4.03 | 4.94 | 6.00 | 7.25 | - | - |
| 45 | 1.68 | 2.18 | 2.75 | 3.43 | 4.21 | 5.11 | 6.17 | - | - |
| 50 | 1.39 | 1.82 | 2.32 | 2.89 | 3.56 | 4.33 | 5.22 | - | - |
| 55 | - | 1.51 | 1.94 | 2.43 | 2.99 | 3.65 | 4.40 | - | - |
| 60 | - | - | 1.60 | 2.02 | 2.50 | 3.05 | 3.69 | - | - |
| 65 | - | - | - | 1.66 | 2.07 | 2.53 | 3.07 | - | - |
| 70 | - | - | - | 1.36 | 1.70 | 2.09 | 2.54 | - | - |

Nominal performance at to = 7.2 °C, tc = 54.4 °C

| | | |
|---------------------|--------|------|
| Cooling capacity | 20 680 | W |
| Power input | 6 194 | W |
| Current consumption | 11.68 | A |
| Mass flow | 506 | kg/h |
| C.O.P. | 3.34 | |

Pressure switch settings

| | | |
|---------------------------|------|--------|
| Maximum HP switch setting | 20.5 | bar(g) |
| Minimum LP switch setting | 0.5 | bar(g) |
| LP pump down setting | 0.5 | bar(g) |

Sound power data

| | | |
|--------------------|---|-------|
| Sound power level | 0 | dB(A) |
| With acoustic hood | 0 | dB(A) |

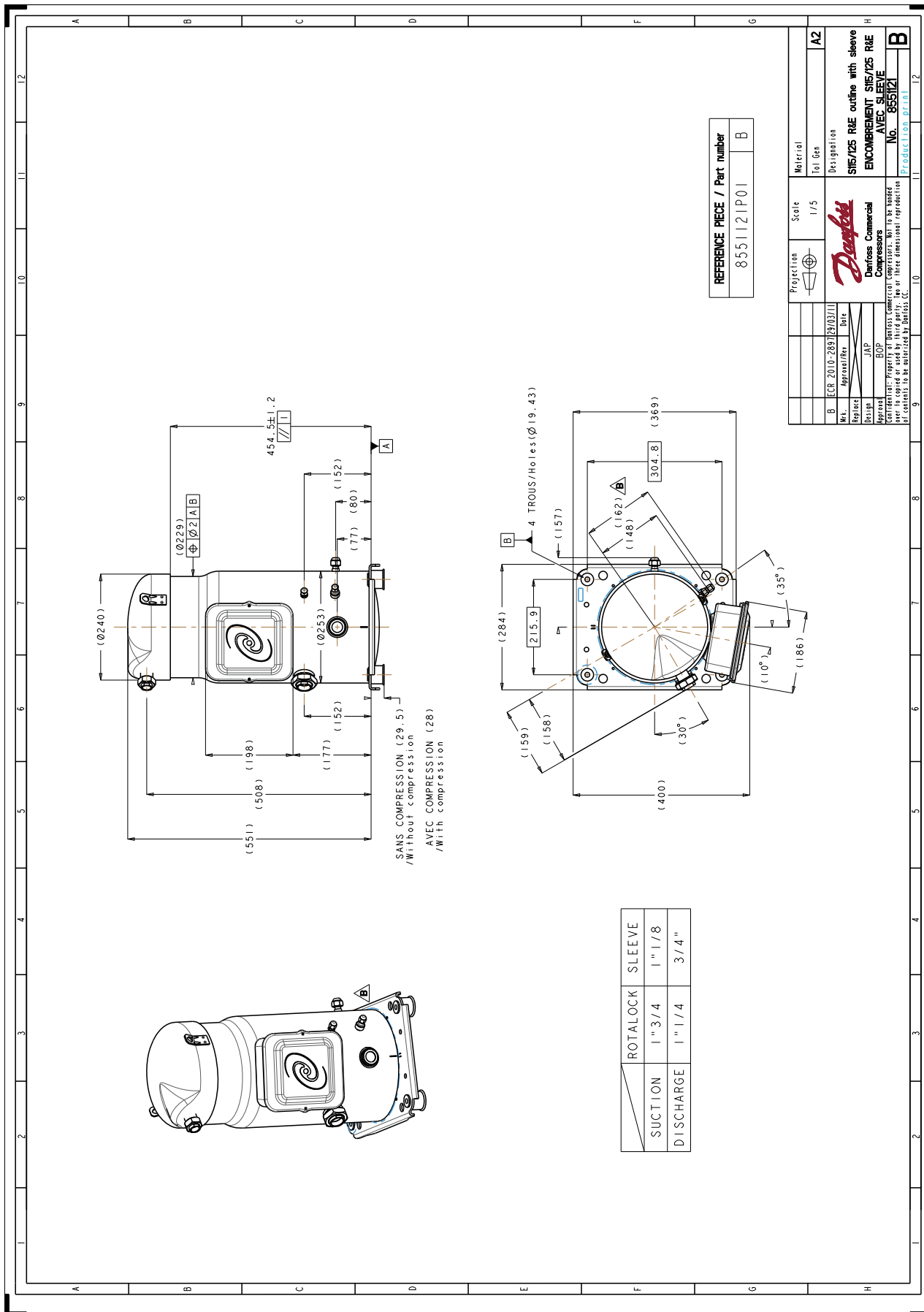
to: Evaporating temperature at dew point

tc: Condensing temperature at dew point

Rating conditions : Superheat = 11.1 K , Subcooling = 8.3 K

All performance data +/- 5%

Danfoss can accept no responsibility for possible errors in catalogues, brochures and other printed material. Danfoss reserves the right to alter its products without notice. This also applies to products already on order provided that such alternations can be made without subsequential changes being necessary in specifications already agreed. All trademarks in this material are property of the respective companies. Danfoss, the Danfoss logotype and Performer are trademarks of Danfoss A/S. All rights reserved.



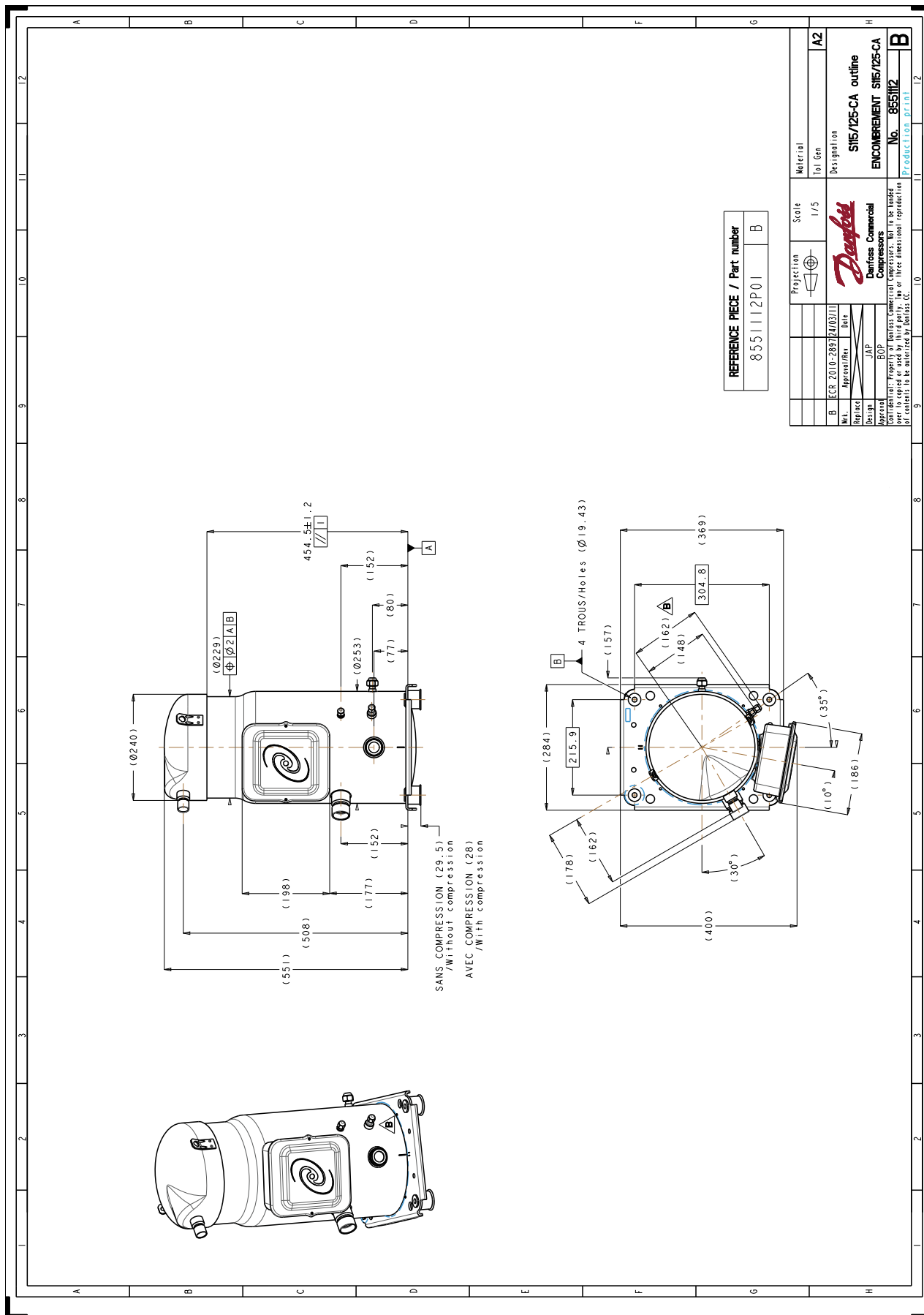
| | | |
|-------------------------------|------------|---|
| REFERENCE PIECE / Part number | 8551121P01 | B |
|-------------------------------|------------|---|

| | | | | |
|------------|-----------------------|----------|-----------|----------------------------------|
| Projection | Scale | Material | Tol. Det. | Designation |
| | 1/5 | | | S115/225 R1E outline with sleeve |
| Mt. | Appr. / Rev. | Date | Replace | ENCOMBREMENT S115/225 R1E |
| B | ECR 2010-289/29/03/11 | | | AVEC SLEEVE |
| Design | JAP | | | No. 8551121 |
| Approval | BOP | | | Production print |

Confidential: Property of Danfoss Commercial Compressors. Not to be used for reproduction or in any other form without the written consent of Danfoss A/S.

| | | |
|-----------------|---------|-----------|
| ROTALOCK SLEEVE | SUCTION | DISCHARGE |
| 1" 3/4 | 1" 1/4 | 3/4" |

Danfoss can accept no responsibility for possible errors in catalogues, brochures and other printed material. Danfoss reserves the right to alter its products without notice. This also applies to products already on order provided that such alternations can be made without subsequential changes being necessary in specifications already agreed. All trademarks in this material are property of the respective companies. Danfoss, the Danfoss logotype and Maneurop are trademarks of Danfoss A/S. All rights reserved.



Danfoss can accept no responsibility for possible errors in catalogues, brochures and other printed material. Danfoss reserves the right to alter its products without notice. This also applies to products already on order provided that such alternations can be made without subsequential changes being necessary in specifications already agreed. All trademarks in this material are property of the respective companies. Danfoss, the Danfoss logotype and Maneurop are trademarks of Danfoss A/S. All rights reserved.