



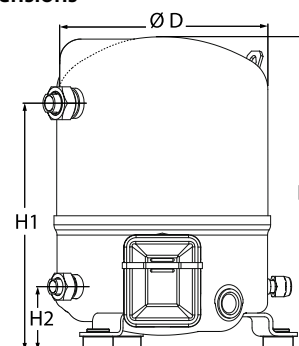
Datasheets

Maneurop[®] Reciprocating compressors MT / MTZ / MPZ / NTZ



General Characteristics

Model number (on compressor nameplate)		MT40JH4E
Code number for Industrial pack**		MT40-4M
Drawing number		8501032e
Suction and discharge connections		Rotolock
Suction connection		1-1/4 " Rotolock
Discharge connection		1 " Rotolock
Suction connection with supplied sleeve		5/8 " ODF
Discharge connection with supplied sleeve		1/2 " ODF
Oil sight glass		None
Oil equalisation connection		None
Oil drain connection		None
LP gauge port		Schrader
IPR valve		30 bar / 8 bar
Cylinders		1
Swept volume		67,89 cm ³ /rev
Displacement @ Nominal speed		11.8 m ³ /h @ 2900 rpm - 14.3 m ³ /h @ 3500 rpm
Net weight		26 kg
Oil charge		0,95 litre, Mineral - 160P
Maximum system test pressure Low Side / High side		25 bar(g) / 30 bar(g)
Maximum differential test pressure		30 bar
Maximum number of starts per hour		12
Refrigerant charge limit		2,5 kg
Approved refrigerants		R22, R417A-160PZ

Dimensions


D=224 mm

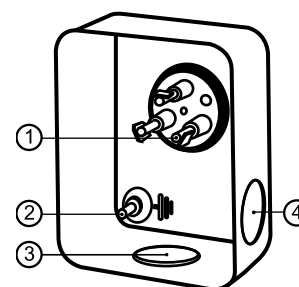
H=356 mm

H1=263 mm

H2=68 mm

Electrical Characteristics

Nominal voltage	380-400V/3/50Hz - 460V/3/60Hz
Voltage range	340-440 V @ 50Hz - 414-506 V @ 60Hz
Winding resistance (between phases) +/- 7% at 25°C	4.56 Ω
Maximum Continuous Current (MCC)	10 A
Locked Rotor Amps (LRA)	38 A
Motor protection	Internal overload protector

Terminal box


IP55 (with cable gland)

1: Spade connectors 1/4"

2: Earth M4-12

3: Knock-out Ø 21 mm (0.83")

4: Hole Ø 21 mm (0.83")

Recommended Installation torques

Oil sight glass	0 Nm
Power connections / Earth connection	Nm / 2 Nm
Mounting bolts	15 Nm

Parts shipped with compressor

Mounting kit with grommets, bolts, nuts, sleeves and washers
Initial oil charge
Installation instructions

Approvals : CE certified, UL certified (file SA6873), -

*Singlepack: Compressor in cardboard box

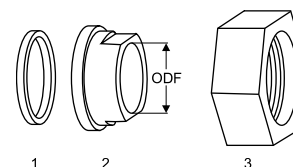
**Industrial pack: 12 Unboxed compressors on pallet (order per multiples of 12)

Rotolock accessories, suction side

Code no.

Solder sleeve, P09 (1-1/4" Rotolock, 5/8" ODF)	8153011
Angle adapter, C09 (1-1/4" Rotolock, 5/8" ODF)	8168009
Rotolock valve, V09 (1-1/4" Rotolock, 5/8" ODF)	8168033
Gasket, 1-1/4"	8156131

Gaskets, sleeves and nuts



- 1: Gasket
- 2: Solder sleeve
- 3: Rotolock nut

Rotolock accessories, discharge side

Code no.

Solder sleeve, P06 (1" Rotolock, 1/2" ODF)	8153007
Angle adapter, C06 (1" Rotolock, 1/2" ODF)	8168007
Rotolock valve, V06 (1" Rotolock, 1/2" ODF)	8168031
Gasket, 1"	8156130

Rotolock accessories, sets

Code no.

Angle adapter set, C09 (1-1/4"~5/8"), C06 (1"~1/2")	7703012
Valve set, V09 (1-1/4"~5/8"), V06 (1"~1/2")	7703005
Gasket set, 1", 1-1/4", 1-3/4", OSG gaskets black & white	8156009

Oil / lubricants

Code no.

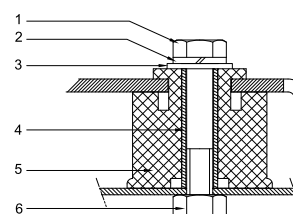
Mineral oil, 160P, 2 litre can	7754001
Mineral oil, 160P, 5 litre can	7754002

Crankcase heaters

Code no.

PTC heater 27W	120Z0459
Belt type crankcase heater, 54 W, 230 V, CE mark, UL	7773106
Belt type crankcase heater, 54 W, 400 V, UL	7773013

Mounting kit



- 1: Bolt (3x)
- 2: Lock washer (3x)
- 3: Flat washer (3x)
- 4: Sleeve (3x)
- 5: Grommet (3x)
- 6: Nut (3x)

Miscellaneous accessories

Code no.

Electronic soft start kit, MCI 15 C	7705006
Acoustic hood for 1 cylinder compressor	7755001

Spare parts

Code no.

Mounting kit for 1 and 2 cylinder compressor, including 3 grommets, 3 bolts	8156001
Service kit for terminal box 80 x 96 mm, including 1 cover, 1 clamp	8156134

Danfoss can accept no responsibility for possible errors in catalogues, brochures and other printed material. Danfoss reserves the right to alter its products without notice. This also applies to products already on order provided that such alternations can be made without subsequential changes being necessary in specifications already agreed. All trademarks in this material are property of the respective companies. Danfoss, the Danfoss logotype and Maneurop are trademarks of Danfoss A/S. All rights reserved.

Performance data at 50 Hz, EN 12900 rating conditions

R22

Cond. temp. in °C (tc)	Evaporating temperature in °C (to)								
	-25	-20	-15	-10	-5	0	5	10	15

Cooling capacity in W

30	3 006	4 021	5 185	6 509	8 007	9 691	11 573	13 667	15 985
35	2 639	3 640	4 785	6 087	7 558	9 211	11 058	13 113	15 388
40	2 273	3 257	4 380	5 657	7 099	8 719	10 529	12 543	14 773
45	1 907	2 870	3 969	5 217	6 626	8 209	9 979	11 948	14 129
50	-	2 485	3 557	4 774	6 149	7 693	9 420	11 342	13 471
55	-	-	3 143	4 327	5 663	7 166	8 846	10 717	12 792
60	-	-	-	3 875	5 170	6 626	8 256	10 072	12 087
65	-	-	-	-	4 677	6 084	7 661	9 419	11 372

Power input in W

30	1 537	1 796	2 036	2 244	2 410	2 523	2 570	2 542	2 426
35	1 635	1 909	2 167	2 398	2 592	2 737	2 821	2 834	2 764
40	1 714	2 005	2 285	2 542	2 767	2 947	3 071	3 128	3 107
45	1 770	2 081	2 386	2 673	2 932	3 150	3 317	3 422	3 452
50	-	2 136	2 469	2 789	3 084	3 344	3 557	3 711	3 797
55	-	-	2 530	2 886	3 221	3 525	3 787	3 995	4 138
60	-	-	-	2 961	3 339	3 691	4 005	4 270	4 474
65	-	-	-	-	3 437	3 840	4 209	4 533	4 801

Current consumption in A

30	3.66	3.89	4.13	4.36	4.55	4.68	4.74	4.70	4.54
35	3.76	4.01	4.27	4.53	4.76	4.94	5.05	5.07	4.97
40	3.83	4.11	4.40	4.69	4.97	5.20	5.37	5.45	5.43
45	3.89	4.19	4.52	4.86	5.18	5.47	5.70	5.85	5.91
50	-	4.25	4.62	5.00	5.38	5.73	6.04	6.27	6.40
55	-	-	4.69	5.13	5.57	5.99	6.37	6.68	6.90
60	-	-	-	5.24	5.74	6.24	6.69	7.09	7.41
65	-	-	-	-	5.89	6.46	7.00	7.49	7.91

Mass flow in kg/h

30	65	86	110	136	166	198	234	274	317
35	60	81	106	133	163	196	232	272	316
40	54	76	101	128	159	193	230	271	315
45	47	70	95	124	155	189	227	269	314
50	-	64	90	118	150	185	224	266	313
55	-	-	83	113	145	181	221	264	311
60	-	-	-	107	140	177	217	261	309
65	-	-	-	-	134	172	213	258	307

Coefficient of performance (C.O.P.)

30	1.95	2.24	2.55	2.90	3.32	3.84	4.50	5.38	6.59
35	1.61	1.91	2.21	2.54	2.92	3.37	3.92	4.63	5.57
40	1.33	1.62	1.92	2.22	2.57	2.96	3.43	4.01	4.76
45	1.08	1.38	1.66	1.95	2.26	2.61	3.01	3.49	4.09
50	-	1.16	1.44	1.71	1.99	2.30	2.65	3.06	3.55
55	-	-	1.24	1.50	1.76	2.03	2.34	2.68	3.09
60	-	-	-	1.31	1.55	1.80	2.06	2.36	2.70
65	-	-	-	-	1.36	1.58	1.82	2.08	2.37

Nominal performance at to = 5 °C, tc = 50 °C

Cooling capacity	9 420	W
Power input	3 557	W
Current consumption	6.04	A
Mass flow	224	kg/h
C.O.P.	2.65	

Pressure switch settings

Maximum HP switch setting	27.7	bar(g)
Minimum LP switch setting	0.2	bar(g)
LP pump down setting	0.9	bar(g)

Sound power data

Sound power level	0	dB(A)
With acoustic hood	0	dB(A)

to: Evaporating temperature at dew point

tc: Condensing temperature at dew point

Rating conditions : Superheat = 10 K , Subcooling = 0 K

All performance data +/- 5%

Danfoss can accept no responsibility for possible errors in catalogues, brochures and other printed material. Danfoss reserves the right to alter its products without notice. This also applies to products already on order provided that such alternations can be made without subsequential changes being necessary in specifications already agreed. All trademarks in this material are property of the respective companies. Danfoss, the Danfoss logotype and Maneurop are trademarks of Danfoss A/S. All rights reserved.

Performance data at 50 Hz, ARI rating conditions

R22

Cond. temp. in °C (tc)	Evaporating temperature in °C (to)								
	-25	-20	-15	-10	-5	0	5	10	15

Cooling capacity in W

30	3 192	4 267	5 497	6 896	8 476	10 252	12 235	14 439	16 877
35	2 813	3 876	5 091	6 470	8 028	9 776	11 729	13 898	16 298
40	2 432	3 481	4 677	6 035	7 567	9 286	11 205	13 338	15 697
45	2 050	3 082	4 258	5 591	7 095	8 782	10 666	12 759	15 076
50	-	2 681	3 834	5 141	6 614	8 267	10 113	12 164	14 435
55	-	-	3 408	4 686	6 126	7 742	9 547	11 555	13 778
60	-	-	-	4 227	5 632	7 209	8 971	10 932	13 105
65	-	-	-	-	5 135	6 670	8 387	10 298	12 418

Power input in W

30	1 537	1 796	2 036	2 244	2 410	2 523	2 570	2 542	2 426
35	1 635	1 909	2 167	2 398	2 592	2 737	2 821	2 834	2 764
40	1 714	2 005	2 285	2 542	2 767	2 947	3 071	3 128	3 107
45	1 770	2 081	2 386	2 673	2 932	3 150	3 317	3 422	3 452
50	-	2 136	2 469	2 789	3 084	3 344	3 557	3 711	3 797
55	-	-	2 530	2 886	3 221	3 525	3 787	3 995	4 138
60	-	-	-	2 961	3 339	3 691	4 005	4 270	4 474
65	-	-	-	-	3 437	3 840	4 209	4 533	4 801

Current consumption in A

30	3.66	3.89	4.13	4.36	4.55	4.68	4.74	4.70	4.54
35	3.76	4.01	4.27	4.53	4.76	4.94	5.05	5.07	4.97
40	3.83	4.11	4.40	4.69	4.97	5.20	5.37	5.45	5.43
45	3.89	4.19	4.52	4.86	5.18	5.47	5.70	5.85	5.91
50	-	4.25	4.62	5.00	5.38	5.73	6.04	6.27	6.40
55	-	-	4.69	5.13	5.57	5.99	6.37	6.68	6.90
60	-	-	-	5.24	5.74	6.24	6.69	7.09	7.41
65	-	-	-	-	5.89	6.46	7.00	7.49	7.91

Mass flow in kg/h

30	65	86	109	136	165	197	233	272	315
35	59	81	105	132	162	195	231	271	314
40	54	76	100	128	158	192	229	269	314
45	47	70	95	123	154	188	226	267	312
50	-	63	89	118	149	184	223	265	311
55	-	-	83	112	145	180	220	263	309
60	-	-	-	106	139	176	216	260	308
65	-	-	-	-	134	171	212	257	305

Coefficient of performance (C.O.P.)

30	2.08	2.37	2.70	3.07	3.52	4.06	4.76	5.68	6.96
35	1.72	2.03	2.35	2.70	3.10	3.57	4.16	4.90	5.90
40	1.42	1.74	2.05	2.37	2.73	3.15	3.65	4.26	5.05
45	1.16	1.48	1.78	2.09	2.42	2.79	3.22	3.73	4.37
50	-	1.26	1.55	1.84	2.14	2.47	2.84	3.28	3.80
55	-	-	1.35	1.62	1.90	2.20	2.52	2.89	3.33
60	-	-	-	1.43	1.69	1.95	2.24	2.56	2.93
65	-	-	-	-	1.49	1.74	1.99	2.27	2.59

Nominal performance at to = 7.2 °C, tc = 54.4 °C

Cooling capacity	10 475	W
Power input	3 856	W
Current consumption	6.47	A
Mass flow	238	kg/h
C.O.P.	2.72	

Pressure switch settings

Maximum HP switch setting	27.7	bar(g)
Minimum LP switch setting	0.2	bar(g)
LP pump down setting	0.9	bar(g)

Sound power data

Sound power level	0	dB(A)
With acoustic hood	0	dB(A)

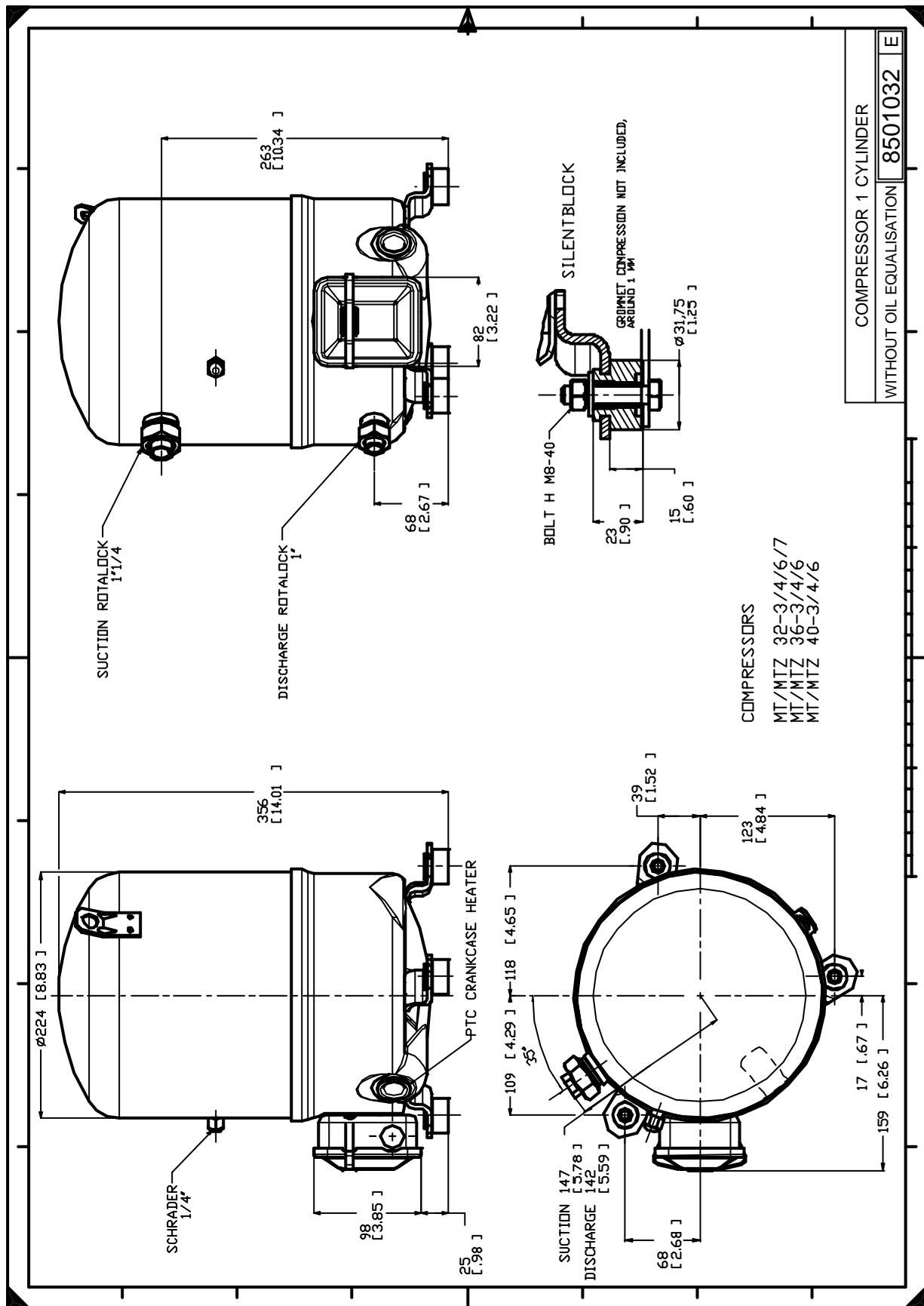
to: Evaporating temperature at dew point

tc: Condensing temperature at dew point

Rating conditions : Superheat = 11.1 K , Subcooling = 8.3 K

All performance data +/- 5%

Danfoss can accept no responsibility for possible errors in catalogues, brochures and other printed material. Danfoss reserves the right to alter its products without notice. This also applies to products already on order provided that such alternations can be made without subsequential changes being necessary in specifications already agreed. All trademarks in this material are property of the respective companies. Danfoss, the Danfoss logotype and Maneurop are trademarks of Danfoss A/S. All rights reserved.

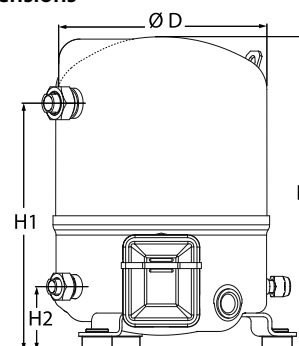


Danfoss can accept no responsibility for possible errors in catalogues, brochures and other printed material. Danfoss reserves the right to alter its products without notice. This also applies to products already on order provided that such alternations can be made without subsequential changes being necessary in specifications already agreed. All trademarks in this material are property of the respective companies. Danfoss, the Danfoss logotype and Maneurop are trademarks of Danfoss A/S. All rights reserved.

General Characteristics

Model number (on compressor nameplate)		MT40JH4EVE
Code number for Singlepack*		MT40-4VI
Code number for Industrial pack**		MT40-4VM
Drawing number		8501025f
Suction and discharge connections		Rotolock
Suction connection		1-1/4" Rotolock
Discharge connection		1" Rotolock
Suction connection with supplied sleeve		5/8" ODF
Discharge connection with supplied sleeve		1/2" ODF
Oil sight glass		Threaded
Oil equalisation connection		3/8" flare SAE
Oil drain connection		None
LP gauge port		Schrader
IPR valve		30 bar / 8 bar
Cylinders		1
Swept volume		67,89 cm ³ /rev
Displacement @ Nominal speed		11.8 m ³ /h @ 2900 rpm - 14.3 m ³ /h @ 3500 rpm
Net weight		26 kg
Oil charge		0,95 litre, Mineral - 160P
Maximum system test pressure Low Side / High side		25 bar(g) / 30 bar(g)
Maximum differential test pressure		30 bar
Maximum number of starts per hour		12
Refrigerant charge limit		2,5 kg
Approved refrigerants		R22, R417A-160PZ

Dimensions



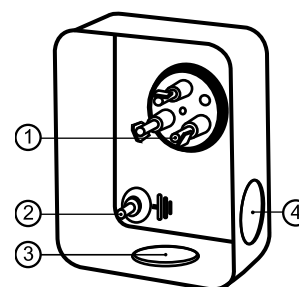
D=224 mm

H=356 mm

H1=263 mm

H2=68 mm

Terminal box



IP55 (with cable gland)

1: Spade connectors 1/4"

2: Earth M4-12

3: Knock-out Ø 21 mm (0.83")

4: Hole Ø 21 mm (0.83")

Electrical Characteristics

Nominal voltage	380-400V/3/50Hz - 460V/3/60Hz
Voltage range	340-440 V @ 50Hz - 414-506 V @ 60Hz
Winding resistance (between phases) +/- 7% at 25°C	4.56 Ω
Maximum Continuous Current (MCC)	10 A
Locked Rotor Amps (LRA)	38 A
Motor protection	Internal overload protector

Recommended Installation torques

Oil sight glass	50 Nm
Power connections / Earth connection	Nm / 2 Nm
Mounting bolts	15 Nm

Parts shipped with compressor

Mounting kit with grommets, bolts, nuts, sleeves and washers
Suction & Discharge solder sleeves, rotolock nuts and gaskets (shipped with rotolock version only)
Initial oil charge
Installation instructions

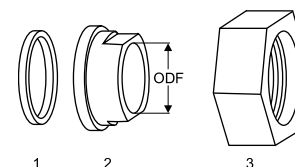
Approvals : CE certified, UL certified (file SA6873), CCC certified

*Singlepack: Compressor in cardboard box

**Industrial pack: 12 Unboxed compressors on pallet (order per multiples of 12)

Rotolock accessories, suction side
Code no.

Solder sleeve, P09 (1-1/4" Rotolock, 5/8" ODF)	8153011
Angle adapter, C09 (1-1/4" Rotolock, 5/8" ODF)	8168009
Rotolock valve, V09 (1-1/4" Rotolock, 5/8" ODF)	8168033
Gasket, 1-1/4"	8156131

Gaskets, sleeves and nuts


- 1: Gasket
- 2: Solder sleeve
- 3: Rotolock nut

Rotolock accessories, discharge side
Code no.

Solder sleeve, P06 (1" Rotolock, 1/2" ODF)	8153007
Angle adapter, C06 (1" Rotolock, 1/2" ODF)	8168007
Rotolock valve, V06 (1" Rotolock, 1/2" ODF)	8168031
Gasket, 1"	8156130

Rotolock accessories, sets
Code no.

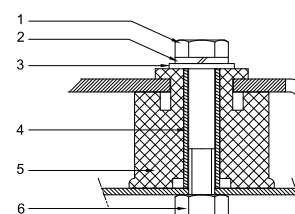
Angle adapter set, C09 (1-1/4"~5/8"), C06 (1"~1/2")	7703012
Valve set, V09 (1-1/4"~5/8"), V06 (1"~1/2")	7703005
Gasket set, 1", 1-1/4", 1-3/4", OSG gaskets black & white	8156009

Oil / lubricants
Code no.

Mineral oil, 160P, 2 litre can	7754001
Mineral oil, 160P, 5 litre can	7754002

Crankcase heaters
Code no.

PTC heater 27W	120Z0459
Belt type crankcase heater, 54 W, 230 V, CE mark, UL	7773106
Belt type crankcase heater, 54 W, 400 V, UL	7773013

Mounting kit


- 1: Bolt (3x)
- 2: Lock washer (3x)
- 3: Flat washer (3x)
- 4: Sleeve (3x)
- 5: Grommet (3x)
- 6: Nut (3x)

Miscellaneous accessories
Code no.

Electronic soft start kit, MCI 15 C	7705006
Acoustic hood for 1 cylinder compressor	7755001
Oil equalisation nut	8153127

Spare parts
Code no.

Mounting kit for 1 and 2 cylinder compressor, including 3 grommets, 3 bolts	8156001
Oil sight glass with gaskets (black & white)	8156019
Gasket for oil sight glass (black chloroprene)	8156145
Service kit for terminal box 80 x 96 mm, including 1 cover, 1 clamp	8156134

Performance data at 50 Hz, EN 12900 rating conditions

R22

Cond. temp. in °C (tc)	Evaporating temperature in °C (to)							
	-25	-20	-15	-10	-5	0	5	10

Cooling capacity in W

30	3 006	4 021	5 185	6 509	8 007	9 691	11 573	13 667	15 985
35	2 639	3 640	4 785	6 087	7 558	9 211	11 058	13 113	15 388
40	2 273	3 257	4 380	5 657	7 099	8 719	10 529	12 543	14 773
45	1 907	2 870	3 969	5 217	6 626	8 209	9 979	11 948	14 129
50	-	2 485	3 557	4 774	6 149	7 693	9 420	11 342	13 471
55	-	-	3 143	4 327	5 663	7 166	8 846	10 717	12 792
60	-	-	-	3 875	5 170	6 626	8 256	10 072	12 087
65	-	-	-	-	4 677	6 084	7 661	9 419	11 372

Power input in W

30	1 537	1 796	2 036	2 244	2 410	2 523	2 570	2 542	2 426
35	1 635	1 909	2 167	2 398	2 592	2 737	2 821	2 834	2 764
40	1 714	2 005	2 285	2 542	2 767	2 947	3 071	3 128	3 107
45	1 770	2 081	2 386	2 673	2 932	3 150	3 317	3 422	3 452
50	-	2 136	2 469	2 789	3 084	3 344	3 557	3 711	3 797
55	-	-	2 530	2 886	3 221	3 525	3 787	3 995	4 138
60	-	-	-	2 961	3 339	3 691	4 005	4 270	4 474
65	-	-	-	-	3 437	3 840	4 209	4 533	4 801

Current consumption in A

30	3.66	3.89	4.13	4.36	4.55	4.68	4.74	4.70	4.54
35	3.76	4.01	4.27	4.53	4.76	4.94	5.05	5.07	4.97
40	3.83	4.11	4.40	4.69	4.97	5.20	5.37	5.45	5.43
45	3.89	4.19	4.52	4.86	5.18	5.47	5.70	5.85	5.91
50	-	4.25	4.62	5.00	5.38	5.73	6.04	6.27	6.40
55	-	-	4.69	5.13	5.57	5.99	6.37	6.68	6.90
60	-	-	-	5.24	5.74	6.24	6.69	7.09	7.41
65	-	-	-	-	5.89	6.46	7.00	7.49	7.91

Mass flow in kg/h

30	65	86	110	136	166	198	234	274	317
35	60	81	106	133	163	196	232	272	316
40	54	76	101	128	159	193	230	271	315
45	47	70	95	124	155	189	227	269	314
50	-	64	90	118	150	185	224	266	313
55	-	-	83	113	145	181	221	264	311
60	-	-	-	107	140	177	217	261	309
65	-	-	-	-	134	172	213	258	307

Coefficient of performance (C.O.P.)

30	1.95	2.24	2.55	2.90	3.32	3.84	4.50	5.38	6.59
35	1.61	1.91	2.21	2.54	2.92	3.37	3.92	4.63	5.57
40	1.33	1.62	1.92	2.22	2.57	2.96	3.43	4.01	4.76
45	1.08	1.38	1.66	1.95	2.26	2.61	3.01	3.49	4.09
50	-	1.16	1.44	1.71	1.99	2.30	2.65	3.06	3.55
55	-	-	1.24	1.50	1.76	2.03	2.34	2.68	3.09
60	-	-	-	1.31	1.55	1.80	2.06	2.36	2.70
65	-	-	-	-	1.36	1.58	1.82	2.08	2.37

Nominal performance at to = 5 °C, tc = 50 °C

Cooling capacity	9 420	W
Power input	3 557	W
Current consumption	6.04	A
Mass flow	224	kg/h
C.O.P.	2.65	

Pressure switch settings

Maximum HP switch setting	27.7	bar(g)
Minimum LP switch setting	0.2	bar(g)
LP pump down setting	0.9	bar(g)

Sound power data

Sound power level	0	dB(A)
With acoustic hood	0	dB(A)

to: Evaporating temperature at dew point

tc: Condensing temperature at dew point

Rating conditions : Superheat = 10 K , Subcooling = 0 K

All performance data +/- 5%

Danfoss can accept no responsibility for possible errors in catalogues, brochures and other printed material. Danfoss reserves the right to alter its products without notice. This also applies to products already on order provided that such alternations can be made without subsequential changes being necessary in specifications already agreed. All trademarks in this material are property of the respective companies. Danfoss, the Danfoss logotype and Maneurop are trademarks of Danfoss A/S. All rights reserved.

Performance data at 50 Hz, ARI rating conditions

R22

Cond. temp. in °C (tc)	Evaporating temperature in °C (to)							
	-25	-20	-15	-10	-5	0	5	10

Cooling capacity in W

30	3 192	4 267	5 497	6 896	8 476	10 252	12 235	14 439	16 877
35	2 813	3 876	5 091	6 470	8 028	9 776	11 729	13 898	16 298
40	2 432	3 481	4 677	6 035	7 567	9 286	11 205	13 338	15 697
45	2 050	3 082	4 258	5 591	7 095	8 782	10 666	12 759	15 076
50	-	2 681	3 834	5 141	6 614	8 267	10 113	12 164	14 435
55	-	-	3 408	4 686	6 126	7 742	9 547	11 555	13 778
60	-	-	-	4 227	5 632	7 209	8 971	10 932	13 105
65	-	-	-	-	5 135	6 670	8 387	10 298	12 418

Power input in W

30	1 537	1 796	2 036	2 244	2 410	2 523	2 570	2 542	2 426
35	1 635	1 909	2 167	2 398	2 592	2 737	2 821	2 834	2 764
40	1 714	2 005	2 285	2 542	2 767	2 947	3 071	3 128	3 107
45	1 770	2 081	2 386	2 673	2 932	3 150	3 317	3 422	3 452
50	-	2 136	2 469	2 789	3 084	3 344	3 557	3 711	3 797
55	-	-	2 530	2 886	3 221	3 525	3 787	3 995	4 138
60	-	-	-	2 961	3 339	3 691	4 005	4 270	4 474
65	-	-	-	-	3 437	3 840	4 209	4 533	4 801

Current consumption in A

30	3.66	3.89	4.13	4.36	4.55	4.68	4.74	4.70	4.54
35	3.76	4.01	4.27	4.53	4.76	4.94	5.05	5.07	4.97
40	3.83	4.11	4.40	4.69	4.97	5.20	5.37	5.45	5.43
45	3.89	4.19	4.52	4.86	5.18	5.47	5.70	5.85	5.91
50	-	4.25	4.62	5.00	5.38	5.73	6.04	6.27	6.40
55	-	-	4.69	5.13	5.57	5.99	6.37	6.68	6.90
60	-	-	-	5.24	5.74	6.24	6.69	7.09	7.41
65	-	-	-	-	5.89	6.46	7.00	7.49	7.91

Mass flow in kg/h

30	65	86	109	136	165	197	233	272	315
35	59	81	105	132	162	195	231	271	314
40	54	76	100	128	158	192	229	269	314
45	47	70	95	123	154	188	226	267	312
50	-	63	89	118	149	184	223	265	311
55	-	-	83	112	145	180	220	263	309
60	-	-	-	106	139	176	216	260	308
65	-	-	-	-	134	171	212	257	305

Coefficient of performance (C.O.P.)

30	2.08	2.37	2.70	3.07	3.52	4.06	4.76	5.68	6.96
35	1.72	2.03	2.35	2.70	3.10	3.57	4.16	4.90	5.90
40	1.42	1.74	2.05	2.37	2.73	3.15	3.65	4.26	5.05
45	1.16	1.48	1.78	2.09	2.42	2.79	3.22	3.73	4.37
50	-	1.26	1.55	1.84	2.14	2.47	2.84	3.28	3.80
55	-	-	1.35	1.62	1.90	2.20	2.52	2.89	3.33
60	-	-	-	1.43	1.69	1.95	2.24	2.56	2.93
65	-	-	-	-	1.49	1.74	1.99	2.27	2.59

Nominal performance at to = 7.2 °C, tc = 54.4 °C

Cooling capacity	10 475	W
Power input	3 856	W
Current consumption	6.47	A
Mass flow	238	kg/h
C.O.P.	2.72	

Pressure switch settings

Maximum HP switch setting	27.7	bar(g)
Minimum LP switch setting	0.2	bar(g)
LP pump down setting	0.9	bar(g)

Sound power data

Sound power level	0	dB(A)
With acoustic hood	0	dB(A)

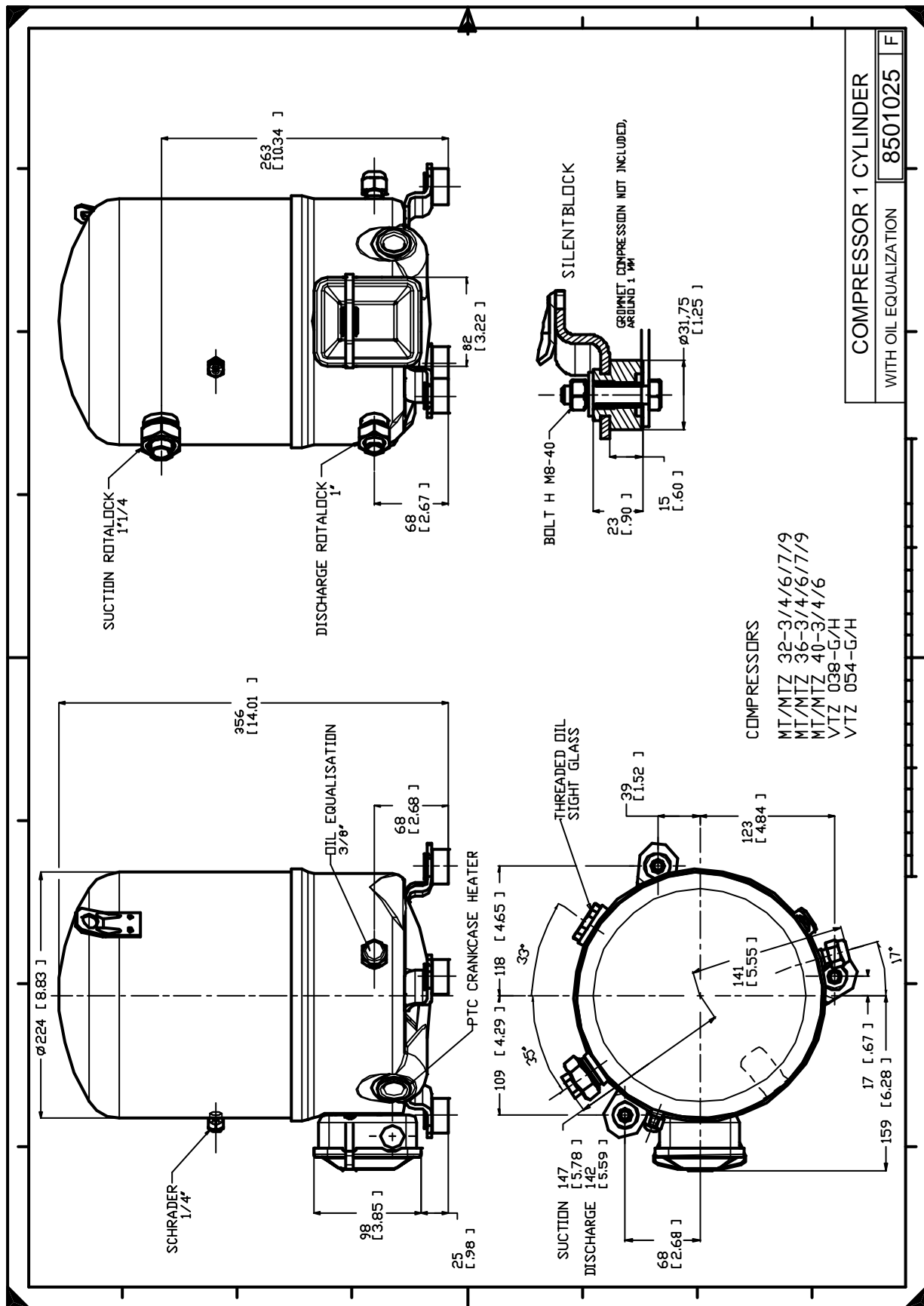
to: Evaporating temperature at dew point

tc: Condensing temperature at dew point

Rating conditions : Superheat = 11.1 K , Subcooling = 8.3 K

All performance data +/- 5%

Danfoss can accept no responsibility for possible errors in catalogues, brochures and other printed material. Danfoss reserves the right to alter its products without notice. This also applies to products already on order provided that such alternations can be made without subsequential changes being necessary in specifications already agreed. All trademarks in this material are property of the respective companies. Danfoss, the Danfoss logotype and Maneurop are trademarks of Danfoss A/S. All rights reserved.



Danfoss can accept no responsibility for possible errors in catalogues, brochures and other printed material. Danfoss reserves the right to alter its products without notice. This also applies to products already on order provided that such alternations can be made without subsequential changes being necessary in specifications already agreed. All trademarks in this material are property of the respective companies. Danfoss, the Danfoss logotype and Maneurop are trademarks of Danfoss A/S. All rights reserved.