



Datasheets

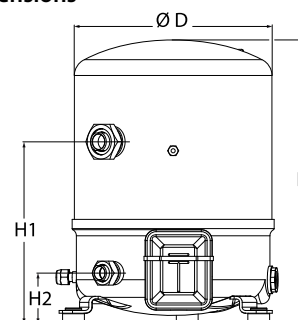
Maneurop® Reciprocating compressors MT / MTZ / MPZ / NTZ



General Characteristics

Model number (on compressor nameplate)		MT56HL4A
Code number for Industrial pack**		MT56-4M
Drawing number		8502014e
Suction and discharge connections		Rotolock
Suction connection		1-3/4 " Rotolock
Discharge connection		1-1/4 " Rotolock
Suction connection with supplied sleeve		7/8 " ODF
Discharge connection with supplied sleeve		3/4 " ODF
Oil sight glass		None
Oil equalisation connection		None
Oil drain connection		None
LP gauge port		Schrader
IPR valve		30 bar / 8 bar
Cylinders	2	
Swept volume	96,13 cm ³ /rev	
Displacement @ Nominal speed	16.7 m ³ /h @ 2900 rpm - 20.2 m ³ /h @ 3500 rpm	
Net weight	37 kg	
Oil charge	1,8 litre, Mineral - 160P	
Maximum system test pressure Low Side / High side	25 bar(g) / 30 bar(g)	
Maximum differential test pressure	30 bar	
Maximum number of starts per hour	12	
Refrigerant charge limit	5 kg	
Approved refrigerants	R22, R417A-160PZ	

Dimensions



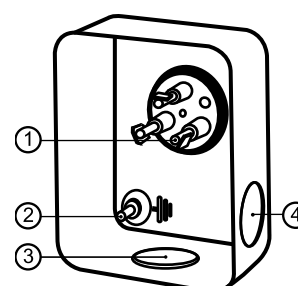
D=288 mm

H=413 mm

H1=265 mm

H2=74 mm

Terminal box



IP55 (with cable gland)

- 1: Spade connectors 1/4"
- 2: Earth M4-12
- 3: Knock-out Ø 21 mm (0.83")
- 4: Hole Ø 21 mm (0.83")

Electrical Characteristics

Nominal voltage	380-400V/3/50Hz - 460V/3/60Hz
Voltage range	340-440 V @ 50Hz - 414-506 V @ 60Hz
Winding resistance (between phases) +/- 7% at 25°C	2.41 Ω
Maximum Continuous Current (MCC)	12 A
Locked Rotor Amps (LRA)	60 A
Motor protection	Internal overload protector

Recommended Installation torques

Oil sight glass	0 Nm
Power connections / Earth connection	Nm / 2 Nm
Mounting bolts	15 Nm

Parts shipped with compressor

Mounting kit with grommets, bolts, nuts, sleeves and washers
Initial oil charge
Installation instructions

Approvals : CE certified, UL certified (file SA6873), -

*Singlepack: Compressor in cardboard box

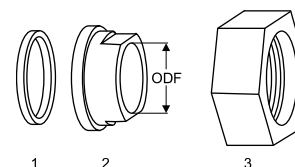
**Industrial pack: 6 Unboxed compressors on pallet (order per multiples of 6)

Rotolock accessories, suction side

Code no.

Solder sleeve, P07 (1-3/4" Rotolock, 7/8" ODF)	8153013
Angle adapter, C07 (1-3/4" Rotolock, 7/8" ODF)	8168008
Rotolock valve, V07 (1-3/4" Rotolock, 7/8" ODF)	8168032
Gasket, 1-3/4"	8156132

Gaskets, sleeves and nuts



- 1: Gasket
2: Solder sleeve
3: Rotolock nut

Rotolock accessories, discharge side

Code no.

Solder sleeve, P04 (1-1/4" Rotolock, 3/4" ODF)	8153008
Angle adapter, C04 (1-1/4" Rotolock, 3/4" ODF)	8168006
Rotolock valve, V04 (1-1/4" Rotolock, 3/4" ODF)	8168029
Gasket, 1-1/4"	8156131

Rotolock accessories, sets

Code no.

Angle adapter set, C07 (1-3/4"~7/8"), C04 (1-1/4"~3/4")	7703013
Valve set, V07 (1-3/4"~7/8"), V04 (1-1/4"~3/4")	7703006
Gasket set, 1", 1-1/4", 1-3/4", OSG gaskets black & white	8156009

Oil / lubricants

Code no.

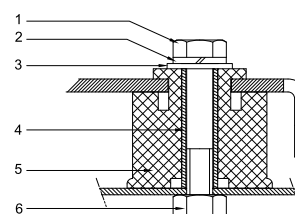
Mineral oil, 160P, 2 litre can	7754001
Mineral oil, 160P, 5 litre can	7754002

Crankcase heaters

Code no.

PTC heater 27W	120Z0459
Belt type crankcase heater, 65 W, 230 V, CE mark, UL	7773107
Belt type crankcase heater, 65 W, 400 V, CE mark, UL	7773117
Belt type crankcase heater, 65 W, 460 V, CE mark, UL	120Z0466

Mounting kit



- 1: Bolt (3x)
2: Lock washer (3x)
3: Flat washer (3x)
4: Sleeve (3x)
5: Grommet (3x)
6: Nut (3x)

Miscellaneous accessories

Code no.

Electronic soft start kit, MCI 15 C	7705006
Soft start kit with statoric resistors, prewired box, SCR01	7702003
Acoustic hood for 2 cylinder compressor	7755002

Spare parts

Code no.

Mounting kit for 1 and 2 cylinder compressor, including 3 grommets, 3 bolts	8156001
Service kit for terminal box 80 x 96 mm, including 1 cover, 1 clamp	8156134

Performance data at 50 Hz, EN 12900 rating conditions
R22

Cond. temp. in °C (tc)	Evaporating temperature in °C (to)								
	-25	-20	-15	-10	-5	0	5	10	15

Cooling capacity in W

30	3 608	5 003	6 645	8 561	10 776	13 318	16 214	19 490	23 173
35	3 215	4 565	6 149	7 992	10 122	12 565	15 348	18 498	22 041
40	2 838	4 135	5 653	7 416	9 453	11 789	14 451	17 466	20 861
45	2 478	3 713	5 154	6 828	8 762	10 981	13 513	16 384	19 620
50	-	3 305	4 662	6 239	8 062	10 158	12 552	15 271	18 341
55	-	-	4 176	5 648	7 351	9 313	11 560	14 118	17 014
60	-	-	-	5 054	6 629	8 448	10 538	12 925	15 636
65	-	-	-	-	5 906	7 576	9 501	11 710	14 227

Power input in W

30	1 980	2 326	2 642	2 912	3 120	3 249	3 283	3 207	3 004
35	2 079	2 447	2 791	3 095	3 344	3 521	3 610	3 595	3 460
40	2 157	2 550	2 927	3 270	3 565	3 794	3 942	3 993	3 931
45	2 211	2 635	3 049	3 436	3 781	4 067	4 279	4 400	4 415
50	-	2 698	3 153	3 589	3 989	4 337	4 617	4 813	4 910
55	-	-	3 238	3 727	4 186	4 600	4 953	5 229	5 412
60	-	-	-	3 847	4 370	4 855	5 286	5 646	5 920
65	-	-	-	-	4 539	5 100	5 612	6 061	6 430

Current consumption in A

30	4.35	4.37	4.63	5.02	5.44	5.77	5.89	5.68	5.05
35	4.31	4.44	4.83	5.36	5.91	6.38	6.65	6.61	6.14
40	4.34	4.59	5.11	5.77	6.47	7.08	7.51	7.62	7.31
45	4.39	4.76	5.41	6.21	7.05	7.81	8.39	8.67	8.53
50	-	4.91	5.68	6.62	7.60	8.52	9.26	9.70	9.73
55	-	-	5.88	6.96	8.09	9.16	10.06	10.67	10.87
60	-	-	-	7.18	8.46	9.69	10.75	11.52	11.90
65	-	-	-	-	8.66	10.04	11.27	12.22	12.78

Mass flow in kg/h

30	79	108	142	180	223	272	328	390	459
35	73	102	136	174	218	267	322	384	453
40	67	96	130	168	212	260	315	377	445
45	61	91	124	162	205	253	308	369	436
50	-	85	117	155	197	245	299	359	426
55	-	-	111	147	189	236	288	348	414
60	-	-	-	139	180	225	277	335	400
65	-	-	-	-	170	214	265	321	384

Coefficient of performance (C.O.P.)

30	1.82	2.15	2.51	2.94	3.45	4.10	4.94	6.08	7.71
35	1.55	1.87	2.20	2.58	3.03	3.57	4.25	5.15	6.37
40	1.32	1.62	1.93	2.27	2.65	3.11	3.67	4.37	5.31
45	1.12	1.41	1.69	1.99	2.32	2.70	3.16	3.72	4.44
50	-	1.22	1.48	1.74	2.02	2.34	2.72	3.17	3.74
55	-	-	1.29	1.52	1.76	2.02	2.33	2.70	3.14
60	-	-	-	1.31	1.52	1.74	1.99	2.29	2.64
65	-	-	-	-	1.30	1.49	1.69	1.93	2.21

Nominal performance at to = 5 °C, tc = 50 °C

Cooling capacity	12 552	W
Power input	4 617	W
Current consumption	9.26	A
Mass flow	299	kg/h
C.O.P.	2.72	

Pressure switch settings

Maximum HP switch setting	27.7	bar(g)
Minimum LP switch setting	0.2	bar(g)
LP pump down setting	0.9	bar(g)

Sound power data

Sound power level	0	dB(A)
With acoustic hood	0	dB(A)

to: Evaporating temperature at dew point

tc: Condensing temperature at dew point

Rating conditions : Superheat = 10 K , Subcooling = 0 K

All performance data +/- 5%

Danfoss can accept no responsibility for possible errors in catalogues, brochures and other printed material. Danfoss reserves the right to alter its products without notice. This also applies to products already on order provided that such alterations can be made without subsequential changes being necessary in specifications already agreed. All trademarks in this material are property of the respective companies. Danfoss, the Danfoss logotype and Maneurop are trademarks of Danfoss A/S. All rights reserved.

Performance data at 50 Hz, ARI rating conditions
R22

Cond. temp. in °C (tc)	Evaporating temperature in °C (to)								
	-25	-20	-15	-10	-5	0	5	10	15

Cooling capacity in W

30	3 831	5 308	7 045	9 069	11 407	14 089	17 140	20 590	24 466
35	3 426	4 861	6 542	8 496	10 752	13 337	16 279	19 605	23 344
40	3 036	4 420	6 036	7 912	10 076	12 555	15 379	18 573	22 167
45	2 664	3 987	5 529	7 318	9 381	11 747	14 443	17 496	20 936
50	-	3 567	5 026	6 719	8 672	10 915	13 474	16 378	19 654
55	-	-	4 528	6 116	7 951	10 062	12 476	15 221	18 325
60	-	-	-	5 513	7 221	9 191	11 451	14 028	16 951
65	-	-	-	-	6 485	8 305	10 402	12 803	15 536

Power input in W

30	1 980	2 326	2 642	2 912	3 120	3 249	3 283	3 207	3 004
35	2 079	2 447	2 791	3 095	3 344	3 521	3 610	3 595	3 460
40	2 157	2 550	2 927	3 270	3 565	3 794	3 942	3 993	3 931
45	2 211	2 635	3 049	3 436	3 781	4 067	4 279	4 400	4 415
50	-	2 698	3 153	3 589	3 989	4 337	4 617	4 813	4 910
55	-	-	3 238	3 727	4 186	4 600	4 953	5 229	5 412
60	-	-	-	3 847	4 370	4 855	5 286	5 646	5 920
65	-	-	-	-	4 539	5 100	5 612	6 061	6 430

Current consumption in A

30	4.35	4.37	4.63	5.02	5.44	5.77	5.89	5.68	5.05
35	4.31	4.44	4.83	5.36	5.91	6.38	6.65	6.61	6.14
40	4.34	4.59	5.11	5.77	6.47	7.08	7.51	7.62	7.31
45	4.39	4.76	5.41	6.21	7.05	7.81	8.39	8.67	8.53
50	-	4.91	5.68	6.62	7.60	8.52	9.26	9.70	9.73
55	-	-	5.88	6.96	8.09	9.16	10.06	10.67	10.87
60	-	-	-	7.18	8.46	9.69	10.75	11.52	11.90
65	-	-	-	-	8.66	10.04	11.27	12.22	12.78

Mass flow in kg/h

30	79	108	141	179	222	271	326	388	456
35	72	102	135	173	217	265	320	382	450
40	67	96	129	167	210	259	314	375	443
45	61	90	123	161	204	252	306	366	434
50	-	84	117	154	196	244	297	357	423
55	-	-	110	146	188	234	287	346	411
60	-	-	-	138	179	224	276	333	398
65	-	-	-	-	169	213	263	319	382

Coefficient of performance (C.O.P.)

30	1.94	2.28	2.67	3.11	3.66	4.34	5.22	6.42	8.14
35	1.65	1.99	2.34	2.75	3.22	3.79	4.51	5.45	6.75
40	1.41	1.73	2.06	2.42	2.83	3.31	3.90	4.65	5.64
45	1.20	1.51	1.81	2.13	2.48	2.89	3.38	3.98	4.74
50	-	1.32	1.59	1.87	2.17	2.52	2.92	3.40	4.00
55	-	-	1.40	1.64	1.90	2.19	2.52	2.91	3.39
60	-	-	-	1.43	1.65	1.89	2.17	2.48	2.86
65	-	-	-	-	1.43	1.63	1.85	2.11	2.42

Nominal performance at to = 7.2 °C, tc = 54.4 °C

Cooling capacity	13 771	W
Power input	5 041	W
Current consumption	10.27	A
Mass flow	313	kg/h
C.O.P.	2.73	

Pressure switch settings

Maximum HP switch setting	27.7	bar(g)
Minimum LP switch setting	0.2	bar(g)
LP pump down setting	0.9	bar(g)

Sound power data

Sound power level	0	dB(A)
With acoustic hood	0	dB(A)

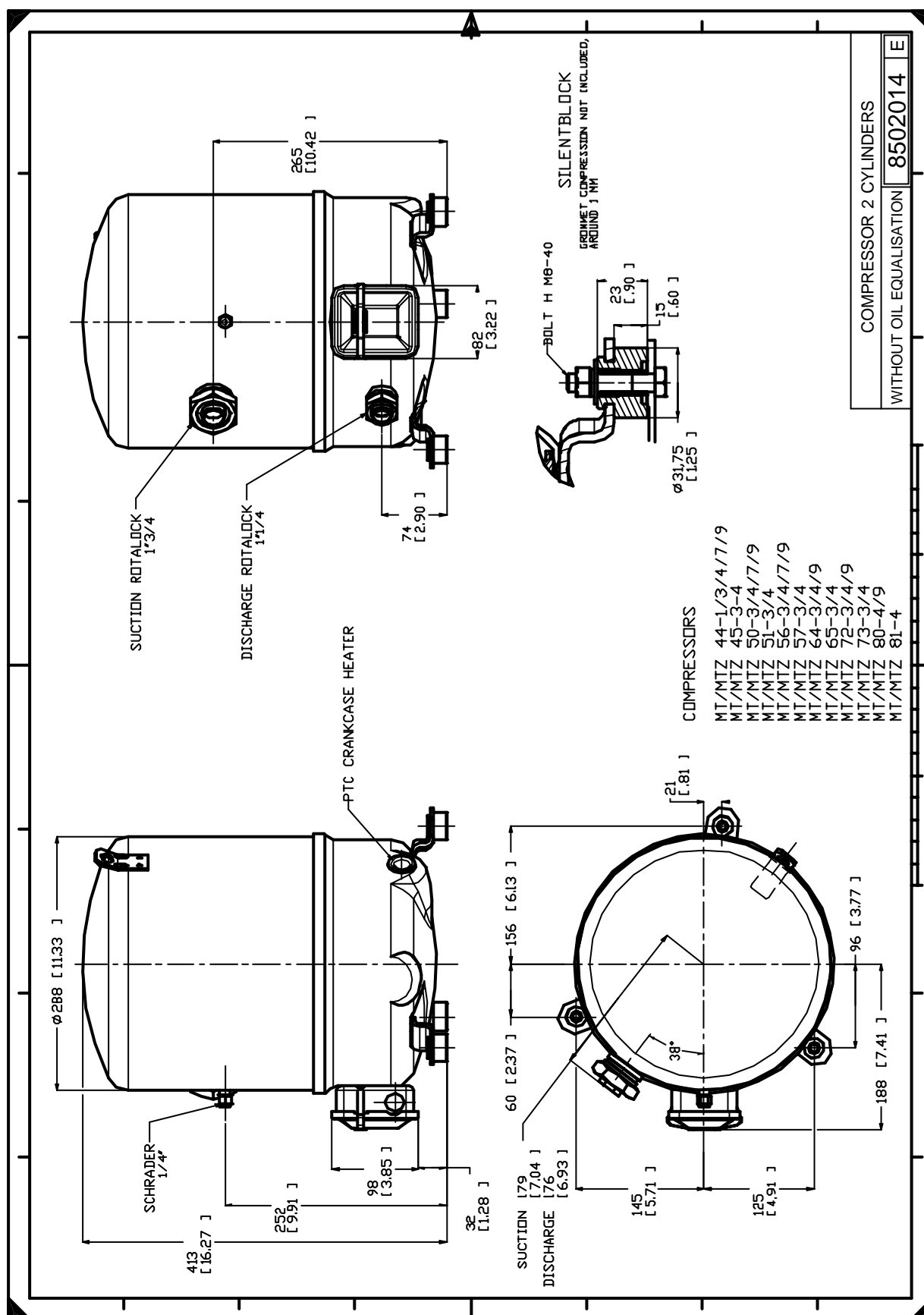
to: Evaporating temperature at dew point

tc: Condensing temperature at dew point

Rating conditions : Superheat = 11.1 K , Subcooling = 8.3 K

All performance data +/- 5%

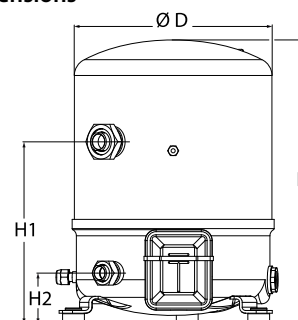
Danfoss can accept no responsibility for possible errors in catalogues, brochures and other printed material. Danfoss reserves the right to alter its products without notice. This also applies to products already on order provided that such alterations can be made without subsequential changes being necessary in specifications already agreed. All trademarks in this material are property of the respective companies. Danfoss, the Danfoss logotype and Maneurop are trademarks of Danfoss A/S. All rights reserved.



General Characteristics

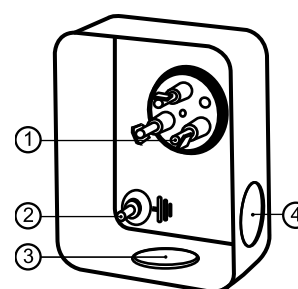
Model number (on compressor nameplate)		MT56HL4AVE
Code number for Singlepack*		MT56-4VI
Code number for Industrial pack**		MT56-4VM
Drawing number		8502012g
Suction and discharge connections		Rotolock
Suction connection		1-3/4" Rotolock
Discharge connection		1-1/4" Rotolock
Suction connection with supplied sleeve		7/8" ODF
Discharge connection with supplied sleeve		3/4" ODF
Oil sight glass		Threaded
Oil equalisation connection		3/8" flare SAE
Oil drain connection		None
LP gauge port		Schrader
IPR valve		30 bar / 8 bar
Cylinders	2	
Swept volume	96,13 cm ³ /rev	
Displacement @ Nominal speed	16.7 m ³ /h @ 2900 rpm - 20.2 m ³ /h @ 3500 rpm	
Net weight	37 kg	
Oil charge	1,8 litre, Mineral - 160P	
Maximum system test pressure Low Side / High side	25 bar(g) / 30 bar(g)	
Maximum differential test pressure	30 bar	
Maximum number of starts per hour	12	
Refrigerant charge limit	5 kg	
Approved refrigerants	R22, R417A-160PZ	

Dimensions



D=288 mm
H=413 mm
H1=265 mm
H2=74 mm

Terminal box



IP55 (with cable gland)

- 1: Spade connectors 1/4"
- 2: Earth M4-12
- 3: Knock-out Ø 21 mm (0.83")
- 4: Hole Ø 21 mm (0.83")

Electrical Characteristics

Nominal voltage	380-400V/3/50Hz - 460V/3/60Hz
Voltage range	340-440 V @ 50Hz - 414-506 V @ 60Hz
Winding resistance (between phases) +/- 7% at 25°C	2.41 Ω
Maximum Continuous Current (MCC)	12 A
Locked Rotor Amps (LRA)	60 A
Motor protection	Internal overload protector

Recommended Installation torques

Oil sight glass	50 Nm
Power connections / Earth connection	Nm / 2 Nm
Mounting bolts	15 Nm

Parts shipped with compressor

Mounting kit with grommets, bolts, nuts, sleeves and washers
Suction & Discharge solder sleeves, rotolock nuts and gaskets (shipped with rotolock version only)
Initial oil charge
Installation instructions

Approvals : CE certified, UL certified (file SA6873), CCC certified

*Singlepack: Compressor in cardboard box

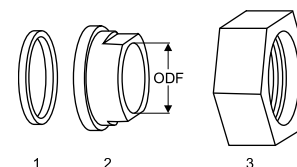
**Industrial pack: 6 Unboxed compressors on pallet (order per multiples of 6)

Rotolock accessories, suction side

Code no.

Solder sleeve, P07 (1-3/4" Rotolock, 7/8" ODF)	8153013
Angle adapter, C07 (1-3/4" Rotolock, 7/8" ODF)	8168008
Rotolock valve, V07 (1-3/4" Rotolock, 7/8" ODF)	8168032
Gasket, 1-3/4"	8156132

Gaskets, sleeves and nuts



- 1: Gasket
2: Solder sleeve
3: Rotolock nut

Rotolock accessories, discharge side

Code no.

Solder sleeve, P04 (1-1/4" Rotolock, 3/4" ODF)	8153008
Angle adapter, C04 (1-1/4" Rotolock, 3/4" ODF)	8168006
Rotolock valve, V04 (1-1/4" Rotolock, 3/4" ODF)	8168029
Gasket, 1-1/4"	8156131

Rotolock accessories, sets

Code no.

Angle adapter set, C07 (1-3/4"~7/8"), C04 (1-1/4"~3/4")	7703013
Valve set, V07 (1-3/4"~7/8"), V04 (1-1/4"~3/4")	7703006
Gasket set, 1", 1-1/4", 1-3/4", OSG gaskets black & white	8156009

Oil / lubricants

Code no.

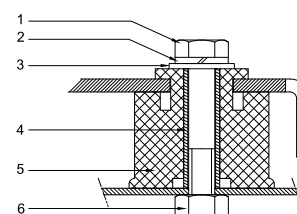
Mineral oil, 160P, 2 litre can	7754001
Mineral oil, 160P, 5 litre can	7754002

Crankcase heaters

Code no.

PTC heater 27W	120Z0459
Belt type crankcase heater, 65 W, 230 V, CE mark, UL	7773107
Belt type crankcase heater, 65 W, 400 V, CE mark, UL	7773117
Belt type crankcase heater, 65 W, 460 V, CE mark, UL	120Z0466

Mounting kit



- 1: Bolt (3x)
2: Lock washer (3x)
3: Flat washer (3x)
4: Sleeve (3x)
5: Grommet (3x)
6: Nut (3x)

Miscellaneous accessories

Code no.

Electronic soft start kit, MCI 15 C	7705006
Soft start kit with statoric resistors, prewired box, SCR01	7702003
Acoustic hood for 2 cylinder compressor	7755002
Oil equalisation nut	8153127

Spare parts

Code no.

Mounting kit for 1 and 2 cylinder compressor, including 3 grommets, 3 bolts	8156001
Oil sight glass with gaskets (black & white)	8156019
Gasket for oil sight glass (black chloroprene)	8156145
Service kit for terminal box 80 x 96 mm, including 1 cover, 1 clamp	8156134

Performance data at 50 Hz, EN 12900 rating conditions
R22

Cond. temp. in °C (tc)	Evaporating temperature in °C (to)								
	-25	-20	-15	-10	-5	0	5	10	15

Cooling capacity in W

30	3 608	5 003	6 645	8 561	10 776	13 318	16 214	19 490	23 173
35	3 215	4 565	6 149	7 992	10 122	12 565	15 348	18 498	22 041
40	2 838	4 135	5 653	7 416	9 453	11 789	14 451	17 466	20 861
45	2 478	3 713	5 154	6 828	8 762	10 981	13 513	16 384	19 620
50	-	3 305	4 662	6 239	8 062	10 158	12 552	15 271	18 341
55	-	-	4 176	5 648	7 351	9 313	11 560	14 118	17 014
60	-	-	-	5 054	6 629	8 448	10 538	12 925	15 636
65	-	-	-	-	5 906	7 576	9 501	11 710	14 227

Power input in W

30	1 980	2 326	2 642	2 912	3 120	3 249	3 283	3 207	3 004
35	2 079	2 447	2 791	3 095	3 344	3 521	3 610	3 595	3 460
40	2 157	2 550	2 927	3 270	3 565	3 794	3 942	3 993	3 931
45	2 211	2 635	3 049	3 436	3 781	4 067	4 279	4 400	4 415
50	-	2 698	3 153	3 589	3 989	4 337	4 617	4 813	4 910
55	-	-	3 238	3 727	4 186	4 600	4 953	5 229	5 412
60	-	-	-	3 847	4 370	4 855	5 286	5 646	5 920
65	-	-	-	-	4 539	5 100	5 612	6 061	6 430

Current consumption in A

30	4.35	4.37	4.63	5.02	5.44	5.77	5.89	5.68	5.05
35	4.31	4.44	4.83	5.36	5.91	6.38	6.65	6.61	6.14
40	4.34	4.59	5.11	5.77	6.47	7.08	7.51	7.62	7.31
45	4.39	4.76	5.41	6.21	7.05	7.81	8.39	8.67	8.53
50	-	4.91	5.68	6.62	7.60	8.52	9.26	9.70	9.73
55	-	-	5.88	6.96	8.09	9.16	10.06	10.67	10.87
60	-	-	-	7.18	8.46	9.69	10.75	11.52	11.90
65	-	-	-	-	8.66	10.04	11.27	12.22	12.78

Mass flow in kg/h

30	79	108	142	180	223	272	328	390	459
35	73	102	136	174	218	267	322	384	453
40	67	96	130	168	212	260	315	377	445
45	61	91	124	162	205	253	308	369	436
50	-	85	117	155	197	245	299	359	426
55	-	-	111	147	189	236	288	348	414
60	-	-	-	139	180	225	277	335	400
65	-	-	-	-	170	214	265	321	384

Coefficient of performance (C.O.P.)

30	1.82	2.15	2.51	2.94	3.45	4.10	4.94	6.08	7.71
35	1.55	1.87	2.20	2.58	3.03	3.57	4.25	5.15	6.37
40	1.32	1.62	1.93	2.27	2.65	3.11	3.67	4.37	5.31
45	1.12	1.41	1.69	1.99	2.32	2.70	3.16	3.72	4.44
50	-	1.22	1.48	1.74	2.02	2.34	2.72	3.17	3.74
55	-	-	1.29	1.52	1.76	2.02	2.33	2.70	3.14
60	-	-	-	1.31	1.52	1.74	1.99	2.29	2.64
65	-	-	-	-	1.30	1.49	1.69	1.93	2.21

Nominal performance at to = 5 °C, tc = 50 °C

Cooling capacity	12 552	W
Power input	4 617	W
Current consumption	9.26	A
Mass flow	299	kg/h
C.O.P.	2.72	

Pressure switch settings

Maximum HP switch setting	27.7	bar(g)
Minimum LP switch setting	0.2	bar(g)
LP pump down setting	0.9	bar(g)

Sound power data

Sound power level	0	dB(A)
With acoustic hood	0	dB(A)

to: Evaporating temperature at dew point

tc: Condensing temperature at dew point

Rating conditions : Superheat = 10 K , Subcooling = 0 K

All performance data +/- 5%

Danfoss can accept no responsibility for possible errors in catalogues, brochures and other printed material. Danfoss reserves the right to alter its products without notice. This also applies to products already on order provided that such alterations can be made without subsequential changes being necessary in specifications already agreed. All trademarks in this material are property of the respective companies. Danfoss, the Danfoss logotype and Maneurop are trademarks of Danfoss A/S. All rights reserved.

Performance data at 50 Hz, ARI rating conditions
R22

Cond. temp. in °C (tc)	Evaporating temperature in °C (to)								
	-25	-20	-15	-10	-5	0	5	10	15

Cooling capacity in W

30	3 831	5 308	7 045	9 069	11 407	14 089	17 140	20 590	24 466
35	3 426	4 861	6 542	8 496	10 752	13 337	16 279	19 605	23 344
40	3 036	4 420	6 036	7 912	10 076	12 555	15 379	18 573	22 167
45	2 664	3 987	5 529	7 318	9 381	11 747	14 443	17 496	20 936
50	-	3 567	5 026	6 719	8 672	10 915	13 474	16 378	19 654
55	-	-	4 528	6 116	7 951	10 062	12 476	15 221	18 325
60	-	-	-	5 513	7 221	9 191	11 451	14 028	16 951
65	-	-	-	-	6 485	8 305	10 402	12 803	15 536

Power input in W

30	1 980	2 326	2 642	2 912	3 120	3 249	3 283	3 207	3 004
35	2 079	2 447	2 791	3 095	3 344	3 521	3 610	3 595	3 460
40	2 157	2 550	2 927	3 270	3 565	3 794	3 942	3 993	3 931
45	2 211	2 635	3 049	3 436	3 781	4 067	4 279	4 400	4 415
50	-	2 698	3 153	3 589	3 989	4 337	4 617	4 813	4 910
55	-	-	3 238	3 727	4 186	4 600	4 953	5 229	5 412
60	-	-	-	3 847	4 370	4 855	5 286	5 646	5 920
65	-	-	-	-	4 539	5 100	5 612	6 061	6 430

Current consumption in A

30	4.35	4.37	4.63	5.02	5.44	5.77	5.89	5.68	5.05
35	4.31	4.44	4.83	5.36	5.91	6.38	6.65	6.61	6.14
40	4.34	4.59	5.11	5.77	6.47	7.08	7.51	7.62	7.31
45	4.39	4.76	5.41	6.21	7.05	7.81	8.39	8.67	8.53
50	-	4.91	5.68	6.62	7.60	8.52	9.26	9.70	9.73
55	-	-	5.88	6.96	8.09	9.16	10.06	10.67	10.87
60	-	-	-	7.18	8.46	9.69	10.75	11.52	11.90
65	-	-	-	-	8.66	10.04	11.27	12.22	12.78

Mass flow in kg/h

30	79	108	141	179	222	271	326	388	456
35	72	102	135	173	217	265	320	382	450
40	67	96	129	167	210	259	314	375	443
45	61	90	123	161	204	252	306	366	434
50	-	84	117	154	196	244	297	357	423
55	-	-	110	146	188	234	287	346	411
60	-	-	-	138	179	224	276	333	398
65	-	-	-	-	169	213	263	319	382

Coefficient of performance (C.O.P.)

30	1.94	2.28	2.67	3.11	3.66	4.34	5.22	6.42	8.14
35	1.65	1.99	2.34	2.75	3.22	3.79	4.51	5.45	6.75
40	1.41	1.73	2.06	2.42	2.83	3.31	3.90	4.65	5.64
45	1.20	1.51	1.81	2.13	2.48	2.89	3.38	3.98	4.74
50	-	1.32	1.59	1.87	2.17	2.52	2.92	3.40	4.00
55	-	-	1.40	1.64	1.90	2.19	2.52	2.91	3.39
60	-	-	-	1.43	1.65	1.89	2.17	2.48	2.86
65	-	-	-	-	1.43	1.63	1.85	2.11	2.42

Nominal performance at to = 7.2 °C, tc = 54.4 °C

Cooling capacity	13 771	W
Power input	5 041	W
Current consumption	10.27	A
Mass flow	313	kg/h
C.O.P.	2.73	

Pressure switch settings

Maximum HP switch setting	27.7	bar(g)
Minimum LP switch setting	0.2	bar(g)
LP pump down setting	0.9	bar(g)

Sound power data

Sound power level	0	dB(A)
With acoustic hood	0	dB(A)

to: Evaporating temperature at dew point

tc: Condensing temperature at dew point

Rating conditions : Superheat = 11.1 K , Subcooling = 8.3 K

All performance data +/- 5%

Danfoss can accept no responsibility for possible errors in catalogues, brochures and other printed material. Danfoss reserves the right to alter its products without notice. This also applies to products already on order provided that such alternations can be made without subsequential changes being necessary in specifications already agreed. All trademarks in this material are property of the respective companies. Danfoss, the Danfoss logotype and Maneurop are trademarks of Danfoss A/S. All rights reserved.

