



Datasheets

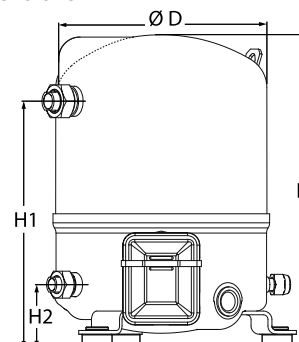
# Maneurop® Reciprocating compressors MT / MTZ / MPZ / NTZ



### General Characteristics

Model number (on compressor nameplate)		<b>MT28JE4A</b>
Code number for Industrial pack**		MT28-4M
Drawing number		8501031e
Suction and discharge connections		Rotolock
Suction connection		1 " Rotolock
Discharge connection		1 " Rotolock
Suction connection with supplied sleeve		1/2 " ODF
Discharge connection with supplied sleeve		3/8 " ODF
Oil sight glass		None
Oil equalisation connection		None
Oil drain connection		None
LP gauge port		Schrader
IPR valve		30 bar / 8 bar
Cylinders	1	
Swept volume	48,06 cm <sup>3</sup> /rev	
Displacement @ Nominal speed	8.4 m <sup>3</sup> /h @ 2900 rpm - 10.1 m <sup>3</sup> /h @ 3500 rpm	
Net weight	23 kg	
Oil charge	0,95 litre, Mineral - 160P	
Maximum system test pressure Low Side / High side	25 bar(g) / 30 bar(g)	
Maximum differential test pressure	30 bar	
Maximum number of starts per hour	12	
Refrigerant charge limit	2,5 kg	
Approved refrigerants	R22, R417A-160PZ	

### Dimensions



D=224 mm

H=333 mm

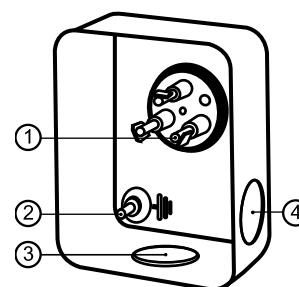
H1=263 mm

H2=68 mm

### Electrical Characteristics

Nominal voltage	380-400V/3/50Hz - 460V/3/60Hz
Voltage range	340-440 V @ 50Hz - 414-506 V @ 60Hz
Winding resistance (between phases) +/- 7% at 25°C	7.11 Ω
Maximum Continuous Current (MCC)	7.5 A
Locked Rotor Amps (LRA)	23 A
Motor protection	Internal overload protector

### Terminal box



IP55 (with cable gland)

1: Spade connectors 1/4"

2: Earth M4-12

3: Knock-out Ø 21 mm (0.83")

4: Hole Ø 21 mm (0.83")

### Recommended Installation torques

Oil sight glass	0 Nm
Power connections / Earth connection	Nm / 2 Nm
Mounting bolts	15 Nm

### Parts shipped with compressor

Mounting kit with grommets, bolts, nuts, sleeves and washers
Initial oil charge
Installation instructions

**Approvals** : CE certified, UL certified (file SA6873), -

\*Singlepack: Compressor in cardboard box

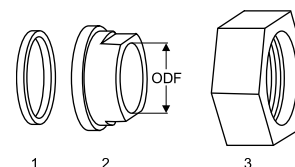
\*\*Industrial pack: 12 Unboxed compressors on pallet (order per multiples of 12)

**Rotolock accessories, suction side**

**Code no.**

Solder sleeve, P06 (1" Rotolock, 1/2" ODF)	8153007
Angle adapter, C06 (1" Rotolock, 1/2" ODF)	8168007
Rotolock valve, V06 (1" Rotolock, 1/2" ODF)	8168031
Gasket, 1"	8156130

**Gaskets, sleeves and nuts**



- 1: Gasket  
2: Solder sleeve  
3: Rotolock nut

**Rotolock accessories, discharge side**

**Code no.**

Solder sleeve, P01 (1" Rotolock, 3/8" ODF)	8153010
Angle adapter, C01 (1" Rotolock, 3/8" ODF)	8168004
Rotolock valve, V01 (1" Rotolock, 3/8" ODF)	8168027
Gasket, 1"	8156130

**Rotolock accessories, sets**

**Code no.**

Angle adapter set, C06 (1"~1/2"), C01 (1"~3/8")	7703011
Valve set, V06 (1"~1/2"), V01 (1"~3/8")	7703004
Gasket set, 1", 1-1/4", 1-3/4", OSG gaskets black & white	8156009

**Oil / lubricants**

**Code no.**

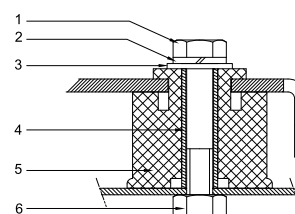
Mineral oil, 160P, 2 litre can	7754001
Mineral oil, 160P, 5 litre can	7754002

**Crankcase heaters**

**Code no.**

PTC heater 27W	120Z0459
Belt type crankcase heater, 54 W, 230 V, CE mark, UL	7773106
Belt type crankcase heater, 54 W, 400 V, UL	7773013

**Mounting kit**



- 1: Bolt (3x)  
2: Lock washer (3x)  
3: Flat washer (3x)  
4: Sleeve (3x)  
5: Grommet (3x)  
6: Nut (3x)

**Miscellaneous accessories**

**Code no.**

Electronic soft start kit, MCI 15 C	7705006
Acoustic hood for 1 cylinder compressor	7755001

**Spare parts**

**Code no.**

Mounting kit for 1 and 2 cylinder compressor, including 3 grommets, 3 bolts	8156001
Service kit for terminal box 80 x 96 mm, including 1 cover, 1 clamp	8156134

**Performance data at 50 Hz, EN 12900 rating conditions**
**R22**

Cond. temp. in °C (tc)	Evaporating temperature in °C (to)								
	-25	-20	-15	-10	-5	0	5	10	15

**Cooling capacity in W**

30	2 029	2 783	3 657	4 662	5 809	7 108	8 572	10 212	12 038
35	1 807	2 541	3 390	4 364	5 474	6 731	8 147	9 732	11 498
40	1 583	2 295	3 115	4 054	5 124	6 335	7 699	9 227	10 930
45	1 358	2 042	2 829	3 729	4 755	5 916	7 224	8 690	10 324
50	-	1 786	2 536	3 395	4 373	5 480	6 729	8 130	9 693
55	-	-	2 235	3 048	3 974	5 024	6 210	7 541	9 030
60	-	-	-	2 689	3 559	4 548	5 665	6 923	8 331
65	-	-	-	-	3 133	4 056	5 102	6 283	7 608

**Power input in W**

30	1 183	1 349	1 497	1 620	1 710	1 758	1 757	1 697	1 572
35	1 206	1 383	1 547	1 689	1 801	1 875	1 902	1 876	1 787
40	1 218	1 409	1 590	1 753	1 890	1 992	2 052	2 061	2 011
45	1 218	1 425	1 626	1 813	1 976	2 109	2 203	2 250	2 242
50	-	1 430	1 654	1 866	2 060	2 226	2 357	2 444	2 479
55	-	-	1 672	1 913	2 139	2 340	2 510	2 640	2 722
60	-	-	-	1 952	2 212	2 452	2 664	2 839	2 970
65	-	-	-	-	2 279	2 559	2 815	3 038	3 220

**Current consumption in A**

30	2.96	3.10	3.25	3.38	3.48	3.54	3.54	3.46	3.30
35	2.98	3.14	3.30	3.45	3.58	3.67	3.70	3.67	3.56
40	3.00	3.17	3.35	3.52	3.68	3.81	3.89	3.90	3.85
45	3.00	3.18	3.39	3.59	3.79	3.95	4.08	4.15	4.15
50	-	3.19	3.42	3.66	3.89	4.11	4.29	4.41	4.48
55	-	-	3.44	3.72	4.00	4.26	4.50	4.69	4.83
60	-	-	-	3.78	4.10	4.42	4.72	4.98	5.19
65	-	-	-	-	4.21	4.59	4.95	5.28	5.57

**Mass flow in kg/h**

30	44	60	78	98	120	146	174	204	239
35	41	57	75	95	118	143	171	202	236
40	37	54	72	92	115	140	168	199	233
45	34	50	68	88	111	136	164	195	230
50	-	46	64	84	107	132	160	191	225
55	-	-	59	79	102	127	155	186	220
60	-	-	-	74	96	121	149	180	213
65	-	-	-	-	90	115	142	172	206

**Coefficient of performance (C.O.P.)**

30	1.71	2.06	2.44	2.88	3.40	4.04	4.88	6.02	7.66
35	1.50	1.84	2.19	2.58	3.04	3.59	4.28	5.19	6.43
40	1.30	1.63	1.96	2.31	2.71	3.18	3.75	4.48	5.44
45	1.11	1.43	1.74	2.06	2.41	2.80	3.28	3.86	4.61
50	-	1.25	1.53	1.82	2.12	2.46	2.86	3.33	3.91
55	-	-	1.34	1.59	1.86	2.15	2.47	2.86	3.32
60	-	-	-	1.38	1.61	1.85	2.13	2.44	2.81
65	-	-	-	-	1.37	1.58	1.81	2.07	2.36

**Nominal performance at to = 5 °C, tc = 50 °C**

Cooling capacity	6 729	W
Power input	2 357	W
Current consumption	4.29	A
Mass flow	160	kg/h
C.O.P.	2.86	

**Pressure switch settings**

Maximum HP switch setting	27.7	bar(g)
Minimum LP switch setting	0.2	bar(g)
LP pump down setting	0.9	bar(g)

**Sound power data**

Sound power level	0	dB(A)
With acoustic hood	0	dB(A)

to: Evaporating temperature at dew point

tc: Condensing temperature at dew point

Rating conditions : Superheat = 10 K , Subcooling = 0 K

All performance data +/- 5%

Danfoss can accept no responsibility for possible errors in catalogues, brochures and other printed material. Danfoss reserves the right to alter its products without notice. This also applies to products already on order provided that such alternations can be made without subsequential changes being necessary in specifications already agreed. All trademarks in this material are property of the respective companies. Danfoss, the Danfoss logotype and Maneurop are trademarks of Danfoss A/S. All rights reserved.

**Performance data at 50 Hz, ARI rating conditions**
**R22**

Cond. temp. in °C (tc)	Evaporating temperature in °C (to)								
	-25	-20	-15	-10	-5	0	5	10	15

**Cooling capacity in W**

30	2 155	2 953	3 877	4 939	6 149	7 520	9 062	10 788	12 709
35	1 926	2 706	3 607	4 639	5 814	7 144	8 640	10 314	12 178
40	1 694	2 453	3 326	4 325	5 461	6 747	8 193	9 811	11 614
45	1 460	2 193	3 035	3 997	5 091	6 328	7 721	9 280	11 016
50	-	1 927	2 734	3 656	4 703	5 889	7 224	8 719	10 387
55	-	-	2 424	3 301	4 299	5 428	6 702	8 130	9 726
60	-	-	-	2 933	3 877	4 947	6 156	7 514	9 032
65	-	-	-	-	3 439	4 446	5 586	6 869	8 308

**Power input in W**

30	1 183	1 349	1 497	1 620	1 710	1 758	1 757	1 697	1 572
35	1 206	1 383	1 547	1 689	1 801	1 875	1 902	1 876	1 787
40	1 218	1 409	1 590	1 753	1 890	1 992	2 052	2 061	2 011
45	1 218	1 425	1 626	1 813	1 976	2 109	2 203	2 250	2 242
50	-	1 430	1 654	1 866	2 060	2 226	2 357	2 444	2 479
55	-	-	1 672	1 913	2 139	2 340	2 510	2 640	2 722
60	-	-	-	1 952	2 212	2 452	2 664	2 839	2 970
65	-	-	-	-	2 279	2 559	2 815	3 038	3 220

**Current consumption in A**

30	2.96	3.10	3.25	3.38	3.48	3.54	3.54	3.46	3.30
35	2.98	3.14	3.30	3.45	3.58	3.67	3.70	3.67	3.56
40	3.00	3.17	3.35	3.52	3.68	3.81	3.89	3.90	3.85
45	3.00	3.18	3.39	3.59	3.79	3.95	4.08	4.15	4.15
50	-	3.19	3.42	3.66	3.89	4.11	4.29	4.41	4.48
55	-	-	3.44	3.72	4.00	4.26	4.50	4.69	4.83
60	-	-	-	3.78	4.10	4.42	4.72	4.98	5.19
65	-	-	-	-	4.21	4.59	4.95	5.28	5.57

**Mass flow in kg/h**

30	44	60	78	97	120	145	173	203	237
35	41	57	75	95	117	142	170	201	235
40	37	53	71	91	114	139	167	198	232
45	33	50	68	88	110	136	163	194	228
50	-	45	64	84	106	131	159	190	224
55	-	-	59	79	102	126	154	185	218
60	-	-	-	74	96	121	148	179	212
65	-	-	-	-	89	114	141	171	204

**Coefficient of performance (C.O.P.)**

30	1.82	2.19	2.59	3.05	3.60	4.28	5.16	6.36	8.09
35	1.60	1.96	2.33	2.75	3.23	3.81	4.54	5.50	6.81
40	1.39	1.74	2.09	2.47	2.89	3.39	3.99	4.76	5.78
45	1.20	1.54	1.87	2.21	2.58	3.00	3.50	4.12	4.91
50	-	1.35	1.65	1.96	2.28	2.65	3.07	3.57	4.19
55	-	-	1.45	1.73	2.01	2.32	2.67	3.08	3.57
60	-	-	-	1.50	1.75	2.02	2.31	2.65	3.04
65	-	-	-	-	1.51	1.74	1.98	2.26	2.58

**Nominal performance at to = 7.2 °C, tc = 54.4 °C**

Cooling capacity	7 378	W
Power input	2 552	W
Current consumption	4.56	A
Mass flow	168	kg/h
C.O.P.	2.89	

**Pressure switch settings**

Maximum HP switch setting	27.7	bar(g)
Minimum LP switch setting	0.2	bar(g)
LP pump down setting	0.9	bar(g)

**Sound power data**

Sound power level	0	dB(A)
With acoustic hood	0	dB(A)

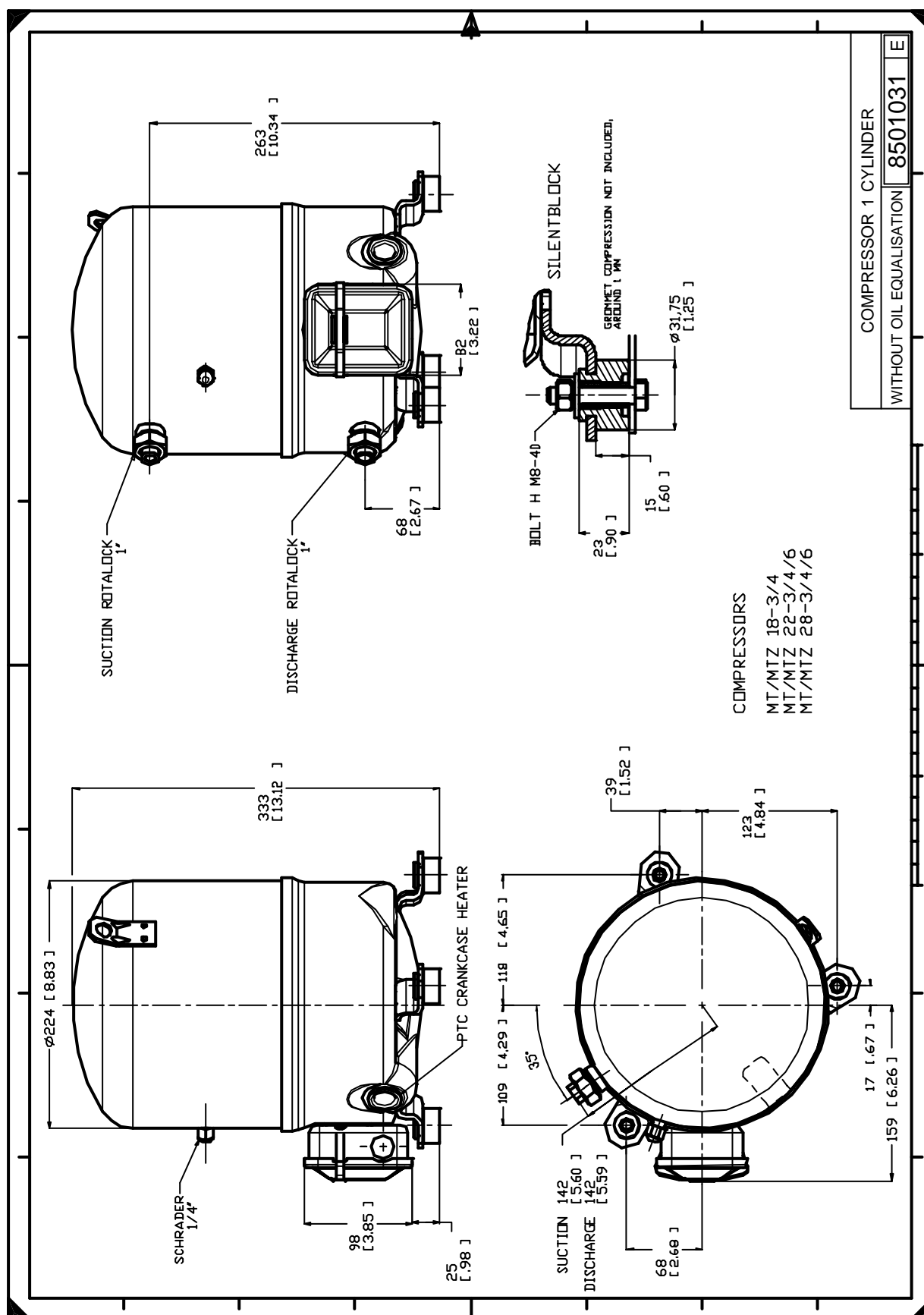
to: Evaporating temperature at dew point

tc: Condensing temperature at dew point

Rating conditions : Superheat = 11.1 K , Subcooling = 8.3 K

All performance data +/- 5%

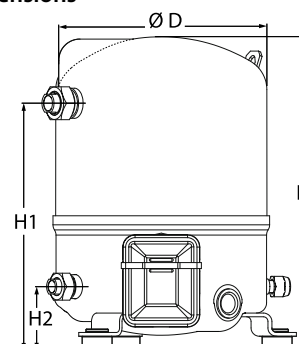
Danfoss can accept no responsibility for possible errors in catalogues, brochures and other printed material. Danfoss reserves the right to alter its products without notice. This also applies to products already on order provided that such alternations can be made without subsequential changes being necessary in specifications already agreed. All trademarks in this material are property of the respective companies. Danfoss, the Danfoss logotype and Maneurop are trademarks of Danfoss A/S. All rights reserved.



Danfoss can accept no responsibility for possible errors in catalogues, brochures and other printed material. Danfoss reserves the right to alter its products without notice. This also applies to products already on order provided that such alternations can be made without subsequential changes being necessary in specifications already agreed. All trademarks in this material are property of the respective companies. Danfoss, the Danfoss logotype and Maneurop are trademarks of Danfoss A/S. All rights reserved.

**General Characteristics**

Model number (on compressor nameplate)		<b>MT28JE4AVE</b>
Code number for Singlepack*		MT28-4VI
Code number for Industrial pack**		MT28-4VM
Drawing number		8501024e
Suction and discharge connections		Rotolock
Suction connection		1 " Rotolock
Discharge connection		1 " Rotolock
Suction connection with supplied sleeve		1/2 " ODF
Discharge connection with supplied sleeve		3/8 " ODF
Oil sight glass		Threaded
Oil equalisation connection		3/8" flare SAE
Oil drain connection		None
LP gauge port		Schrader
IPR valve		30 bar / 8 bar
Cylinders	1	
Swept volume	48,06 cm <sup>3</sup> /rev	
Displacement @ Nominal speed	8.4 m <sup>3</sup> /h @ 2900 rpm - 10.1 m <sup>3</sup> /h @ 3500 rpm	
Net weight	23 kg	
Oil charge	0,95 litre, Mineral - 160P	
Maximum system test pressure Low Side / High side	25 bar(g) / 30 bar(g)	
Maximum differential test pressure	30 bar	
Maximum number of starts per hour	12	
Refrigerant charge limit	2,5 kg	
Approved refrigerants	R22, R417A-160PZ	

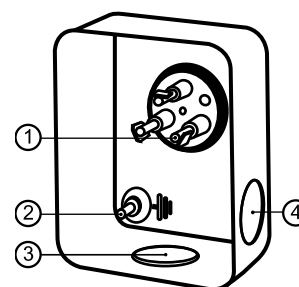
**Dimensions**


D=224 mm

H=333 mm

H1=263 mm

H2=68 mm

**Terminal box**


IP55 (with cable gland)

1: Spade connectors 1/4"

2: Earth M4-12

3: Knock-out Ø 21 mm (0.83")

4: Hole Ø 21 mm (0.83")

**Electrical Characteristics**

Nominal voltage	380-400V/3/50Hz - 460V/3/60Hz
Voltage range	340-440 V @ 50Hz - 414-506 V @ 60Hz
Winding resistance (between phases) +/- 7% at 25°C	7.11 Ω
Maximum Continuous Current (MCC)	7.5 A
Locked Rotor Amps (LRA)	23 A
Motor protection	Internal overload protector

**Recommended Installation torques**

Oil sight glass	50 Nm
Power connections / Earth connection	Nm / 2 Nm
Mounting bolts	15 Nm

**Parts shipped with compressor**

Mounting kit with grommets, bolts, nuts, sleeves and washers
Suction & Discharge solder sleeves, rotolock nuts and gaskets (shipped with rotolock version only)
Initial oil charge
Installation instructions

**Approvals** : CE certified, UL certified (file SA6873), CCC certified

\*Singlepack: Compressor in cardboard box

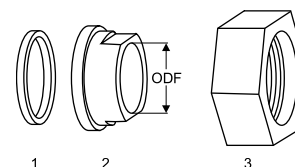
\*\*Industrial pack: 12 Unboxed compressors on pallet (order per multiples of 12)

**Rotolock accessories, suction side**

**Code no.**

Solder sleeve, P06 (1" Rotolock, 1/2" ODF)	8153007
Angle adapter, C06 (1" Rotolock, 1/2" ODF)	8168007
Rotolock valve, V06 (1" Rotolock, 1/2" ODF)	8168031
Gasket, 1"	8156130

**Gaskets, sleeves and nuts**



**Rotolock accessories, discharge side**

**Code no.**

Solder sleeve, P01 (1" Rotolock, 3/8" ODF)	8153010
Angle adapter, C01 (1" Rotolock, 3/8" ODF)	8168004
Rotolock valve, V01 (1" Rotolock, 3/8" ODF)	8168027
Gasket, 1"	8156130

**Rotolock accessories, sets**

**Code no.**

Angle adapter set, C06 (1"~1/2"), C01 (1"~3/8")	7703011
Valve set, V06 (1"~1/2"), V01 (1"~3/8")	7703004
Gasket set, 1", 1-1/4", 1-3/4", OSG gaskets black & white	8156009

- 1: Gasket  
2: Solder sleeve  
3: Rotolock nut

**Oil / lubricants**

**Code no.**

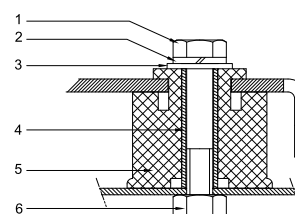
Mineral oil, 160P, 2 litre can	7754001
Mineral oil, 160P, 5 litre can	7754002

**Crankcase heaters**

**Code no.**

PTC heater 27W	120Z0459
Belt type crankcase heater, 54 W, 230 V, CE mark, UL	7773106
Belt type crankcase heater, 54 W, 400 V, UL	7773013

**Mounting kit**



**Miscellaneous accessories**

**Code no.**

Electronic soft start kit, MCI 15 C	7705006
Acoustic hood for 1 cylinder compressor	7755001
Oil equalisation nut	8153127

**Spare parts**

**Code no.**

Mounting kit for 1 and 2 cylinder compressor, including 3 grommets, 3 bolts	8156001
Oil sight glass with gaskets (black & white)	8156019
Gasket for oil sight glass (black chloroprene)	8156145
Service kit for terminal box 80 x 96 mm, including 1 cover, 1 clamp	8156134

- 1: Bolt (3x)  
2: Lock washer (3x)  
3: Flat washer (3x)  
4: Sleeve (3x)  
5: Grommet (3x)  
6: Nut (3x)

**Performance data at 50 Hz, EN 12900 rating conditions**
**R22**

Cond. temp. in °C (tc)	Evaporating temperature in °C (to)								
	-25	-20	-15	-10	-5	0	5	10	15

**Cooling capacity in W**

30	2 029	2 783	3 657	4 662	5 809	7 108	8 572	10 212	12 038
35	1 807	2 541	3 390	4 364	5 474	6 731	8 147	9 732	11 498
40	1 583	2 295	3 115	4 054	5 124	6 335	7 699	9 227	10 930
45	1 358	2 042	2 829	3 729	4 755	5 916	7 224	8 690	10 324
50	-	1 786	2 536	3 395	4 373	5 480	6 729	8 130	9 693
55	-	-	2 235	3 048	3 974	5 024	6 210	7 541	9 030
60	-	-	-	2 689	3 559	4 548	5 665	6 923	8 331
65	-	-	-	-	3 133	4 056	5 102	6 283	7 608

**Power input in W**

30	1 183	1 349	1 497	1 620	1 710	1 758	1 757	1 697	1 572
35	1 206	1 383	1 547	1 689	1 801	1 875	1 902	1 876	1 787
40	1 218	1 409	1 590	1 753	1 890	1 992	2 052	2 061	2 011
45	1 218	1 425	1 626	1 813	1 976	2 109	2 203	2 250	2 242
50	-	1 430	1 654	1 866	2 060	2 226	2 357	2 444	2 479
55	-	-	1 672	1 913	2 139	2 340	2 510	2 640	2 722
60	-	-	-	1 952	2 212	2 452	2 664	2 839	2 970
65	-	-	-	-	2 279	2 559	2 815	3 038	3 220

**Current consumption in A**

30	2.96	3.10	3.25	3.38	3.48	3.54	3.54	3.46	3.30
35	2.98	3.14	3.30	3.45	3.58	3.67	3.70	3.67	3.56
40	3.00	3.17	3.35	3.52	3.68	3.81	3.89	3.90	3.85
45	3.00	3.18	3.39	3.59	3.79	3.95	4.08	4.15	4.15
50	-	3.19	3.42	3.66	3.89	4.11	4.29	4.41	4.48
55	-	-	3.44	3.72	4.00	4.26	4.50	4.69	4.83
60	-	-	-	3.78	4.10	4.42	4.72	4.98	5.19
65	-	-	-	-	4.21	4.59	4.95	5.28	5.57

**Mass flow in kg/h**

30	44	60	78	98	120	146	174	204	239
35	41	57	75	95	118	143	171	202	236
40	37	54	72	92	115	140	168	199	233
45	34	50	68	88	111	136	164	195	230
50	-	46	64	84	107	132	160	191	225
55	-	-	59	79	102	127	155	186	220
60	-	-	-	74	96	121	149	180	213
65	-	-	-	-	90	115	142	172	206

**Coefficient of performance (C.O.P.)**

30	1.71	2.06	2.44	2.88	3.40	4.04	4.88	6.02	7.66
35	1.50	1.84	2.19	2.58	3.04	3.59	4.28	5.19	6.43
40	1.30	1.63	1.96	2.31	2.71	3.18	3.75	4.48	5.44
45	1.11	1.43	1.74	2.06	2.41	2.80	3.28	3.86	4.61
50	-	1.25	1.53	1.82	2.12	2.46	2.86	3.33	3.91
55	-	-	1.34	1.59	1.86	2.15	2.47	2.86	3.32
60	-	-	-	1.38	1.61	1.85	2.13	2.44	2.81
65	-	-	-	-	1.37	1.58	1.81	2.07	2.36

**Nominal performance at to = 5 °C, tc = 50 °C**

Cooling capacity	6 729	W
Power input	2 357	W
Current consumption	4.29	A
Mass flow	160	kg/h
C.O.P.	2.86	

**Pressure switch settings**

Maximum HP switch setting	27.7	bar(g)
Minimum LP switch setting	0.2	bar(g)
LP pump down setting	0.9	bar(g)

**Sound power data**

Sound power level	0	dB(A)
With acoustic hood	0	dB(A)

to: Evaporating temperature at dew point

tc: Condensing temperature at dew point

Rating conditions : Superheat = 10 K , Subcooling = 0 K

All performance data +/- 5%

Danfoss can accept no responsibility for possible errors in catalogues, brochures and other printed material. Danfoss reserves the right to alter its products without notice. This also applies to products already on order provided that such alternations can be made without subsequential changes being necessary in specifications already agreed. All trademarks in this material are property of the respective companies. Danfoss, the Danfoss logotype and Maneurop are trademarks of Danfoss A/S. All rights reserved.

**Performance data at 50 Hz, ARI rating conditions**
**R22**

Cond. temp. in °C (tc)	Evaporating temperature in °C (to)								
	-25	-20	-15	-10	-5	0	5	10	15

**Cooling capacity in W**

30	2 155	2 953	3 877	4 939	6 149	7 520	9 062	10 788	12 709
35	1 926	2 706	3 607	4 639	5 814	7 144	8 640	10 314	12 178
40	1 694	2 453	3 326	4 325	5 461	6 747	8 193	9 811	11 614
45	1 460	2 193	3 035	3 997	5 091	6 328	7 721	9 280	11 016
50	-	1 927	2 734	3 656	4 703	5 889	7 224	8 719	10 387
55	-	-	2 424	3 301	4 299	5 428	6 702	8 130	9 726
60	-	-	-	2 933	3 877	4 947	6 156	7 514	9 032
65	-	-	-	-	3 439	4 446	5 586	6 869	8 308

**Power input in W**

30	1 183	1 349	1 497	1 620	1 710	1 758	1 757	1 697	1 572
35	1 206	1 383	1 547	1 689	1 801	1 875	1 902	1 876	1 787
40	1 218	1 409	1 590	1 753	1 890	1 992	2 052	2 061	2 011
45	1 218	1 425	1 626	1 813	1 976	2 109	2 203	2 250	2 242
50	-	1 430	1 654	1 866	2 060	2 226	2 357	2 444	2 479
55	-	-	1 672	1 913	2 139	2 340	2 510	2 640	2 722
60	-	-	-	1 952	2 212	2 452	2 664	2 839	2 970
65	-	-	-	-	2 279	2 559	2 815	3 038	3 220

**Current consumption in A**

30	2.96	3.10	3.25	3.38	3.48	3.54	3.54	3.46	3.30
35	2.98	3.14	3.30	3.45	3.58	3.67	3.70	3.67	3.56
40	3.00	3.17	3.35	3.52	3.68	3.81	3.89	3.90	3.85
45	3.00	3.18	3.39	3.59	3.79	3.95	4.08	4.15	4.15
50	-	3.19	3.42	3.66	3.89	4.11	4.29	4.41	4.48
55	-	-	3.44	3.72	4.00	4.26	4.50	4.69	4.83
60	-	-	-	3.78	4.10	4.42	4.72	4.98	5.19
65	-	-	-	-	4.21	4.59	4.95	5.28	5.57

**Mass flow in kg/h**

30	44	60	78	97	120	145	173	203	237
35	41	57	75	95	117	142	170	201	235
40	37	53	71	91	114	139	167	198	232
45	33	50	68	88	110	136	163	194	228
50	-	45	64	84	106	131	159	190	224
55	-	-	59	79	102	126	154	185	218
60	-	-	-	74	96	121	148	179	212
65	-	-	-	-	89	114	141	171	204

**Coefficient of performance (C.O.P.)**

30	1.82	2.19	2.59	3.05	3.60	4.28	5.16	6.36	8.09
35	1.60	1.96	2.33	2.75	3.23	3.81	4.54	5.50	6.81
40	1.39	1.74	2.09	2.47	2.89	3.39	3.99	4.76	5.78
45	1.20	1.54	1.87	2.21	2.58	3.00	3.50	4.12	4.91
50	-	1.35	1.65	1.96	2.28	2.65	3.07	3.57	4.19
55	-	-	1.45	1.73	2.01	2.32	2.67	3.08	3.57
60	-	-	-	1.50	1.75	2.02	2.31	2.65	3.04
65	-	-	-	-	1.51	1.74	1.98	2.26	2.58

**Nominal performance at to = 7.2 °C, tc = 54.4 °C**

Cooling capacity	7 378	W
Power input	2 552	W
Current consumption	4.56	A
Mass flow	168	kg/h
C.O.P.	2.89	

**Pressure switch settings**

Maximum HP switch setting	27.7	bar(g)
Minimum LP switch setting	0.2	bar(g)
LP pump down setting	0.9	bar(g)

**Sound power data**

Sound power level	0	dB(A)
With acoustic hood	0	dB(A)

to: Evaporating temperature at dew point

tc: Condensing temperature at dew point

Rating conditions : Superheat = 11.1 K , Subcooling = 8.3 K

All performance data +/- 5%

Danfoss can accept no responsibility for possible errors in catalogues, brochures and other printed material. Danfoss reserves the right to alter its products without notice. This also applies to products already on order provided that such alternations can be made without subsequential changes being necessary in specifications already agreed. All trademarks in this material are property of the respective companies. Danfoss, the Danfoss logotype and Maneurop are trademarks of Danfoss A/S. All rights reserved.

