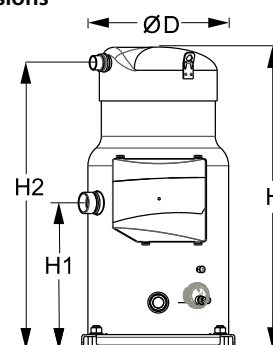


General Characteristics

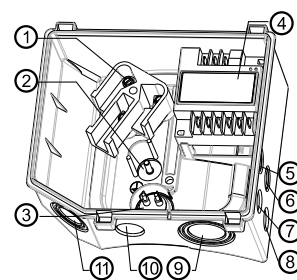
Model number (on compressor nameplate)		CH290A4ABE
Code number for Singlepack*		120H1242
Code number for Industrial pack**		120H1243
Drawing number		8556089c
Suction and discharge connections		Brazed
Suction connection		1-5/8" ODF
Discharge connection		1-1/8" ODF
Oil sight glass		Threaded
Oil equalisation connection		2-1/4" Rotolock
Oil drain connection		1/4" flare
LP gauge port		Schrader
IPR valve		None
Reverse rotation protection		Electronic module
Swept volume	276.2 cm ³ /rev	
Displacement @ Nominal speed	48.1 m ³ /h @ 2900 rpm - 58.0 m ³ /h @ 3500 rpm	
Net weight	111 kg	
Oil charge	6.7 litre, POE - 160SZ	
Maximum system test pressure Low Side / High side	31.1 bar(g) / 45 bar(g)	
Maximum differential test pressure	37 bar	
Maximum number of starts per hour	12	
Refrigerant charge limit	13.5 kg	
Approved refrigerants	R410A	

Dimensions


D=317.5 mm
 H=682.5 mm
 H1=331 mm
 H2=647.5 mm
 H3=- mm

Electrical Characteristics

Nominal voltage	380-415V/3/50Hz - 460V/3/60Hz
Voltage range	340-457 V @ 50Hz - 414-506 V @ 60Hz
Winding resistance (between phases) +/- 7% at 25°C	0,52 Ω
Rated Load Amps (RLA)	44.3 A
Maximum Continuous Current (MCC)	62 A
Locked Rotor Amps (LRA)	260 A
Motor protection	Electronic protection module, 110-240 V

Terminal box

IP54 (with cable gland)

- 1: Power connection, 3 x 4.8 mm (3/16")
- 2: Earth M5
- 3: Thermistor connector
- 4: Electronic protection module
- 5: Double knock-out Ø 22.5 mm (7/8") & Ø 16.5 mm (0.65")
- 6: Double knock-out Ø 22.5 mm (7/8") & Ø 16.5 mm (0.65")
- 7: Knock-out Ø 20.7 mm (0.81")
- 8: Knock-out Ø 20.7 mm (0.81")
- 9: Triple knock-out Ø 50.8 mm (2") & Ø 43.7 mm (1.72") & Ø 34.5 mm (1.35")
- 10: Knock-out Ø 25.5 mm (1.00")
- 11: Triple knock-out Ø 40.5 mm (1.59") & Ø 32.2 mm (1.27") & Ø 25.5 mm (1")

Recommended Installation torques

Oil sight glass	50 Nm
Power connections / Earth connection	3 Nm / 2 Nm
Mounting bolts	21 Nm

Parts shipped with compressor

Mounting kit with rigid grommets, bolts, nuts, sleeves and washers
Electronic protection module mounted in terminal box
Initial oil charge
Installation instructions

Approvals : CE certified, UL certified (file SA6873), -

*Singlepack: Compressor in cardboard box

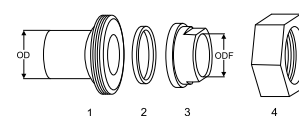
**Industrial pack: 6 Unboxed compressors on pallet (order per multiples of 6)

Rotolock accessories, suction side
Code no.

Solder sleeve, P03 (2-1/4" Rotolock, 1-5/8" ODF)	8153006
Rotolock valve, V03 (2-1/4" Rotolock, 1-5/8" ODF)	8168026
Rotolock adapter (2"1/4 Rotolock, 1"5/8 ODF)	120Z0432
Gasket, 2-1/4"	8156133

Rotolock accessories, discharge side
Code no.

Solder sleeve, P02 (1-3/4" Rotolock, 1-1/8" ODF)	8153004
Angle adapter, C02 (1-3/4" Rotolock, 1-1/8" ODF)	8168005
Rotolock valve, V02 (1-3/4" Rotolock, 1-1/8" ODF)	8168028
Rotolock adapter (1-3/4" Rotolock, 1-1/8" ODF)	120Z0364
Gasket, 1-3/4"	8156132

Solder sleeve adapter set


- 1: Rotolock adapter (Suc & Dis)
 2: Gasket (Suc & Dis)
 3: Solder sleeve (Suc & Dis)
 4: Rotolock nut (Suc & Dis)

Rotolock accessories, sets
Code no.

Solder sleeve adapter set, (2-1/4" Rotolock, 1-5/8" ODF), (1-3/4" Rotolock, 1"1/8 ODF)	7765028
Valve set, V03 (2-1/4"~1-5/8"), V02 (1-3/4"~1-1/8")	7703383
Gasket set, 1-1/4", 1-3/4", 2-1/4", OSG gaskets black & white	8156013

Oil / lubricants
Code no.

POE lubricant, 160SZ, 1 litre can	7754023
POE lubricant, 160SZ, 2.5 litre can	120Z0571

Crankcase heaters
Code no.

Surface sump heater + bottom insulation, 56 W, 24 V, CE mark, UL	120Z0360
Surface sump heater + bottom insulation, 56 W, 230 V, CE mark, UL	120Z0376
Surface sump heater + bottom insulation, 56 W, 400 V, CE mark, UL	120Z0377
Surface sump heater + bottom insulation, 56 W, 460 V, CE mark, UL	120Z0378
Belt type crankcase heater, 75 W, 230 V, CE mark, UL	7773108
Belt type crankcase heater, 75 W, 400 V, CE mark, UL	7773118
Belt type crankcase heater, 75 W, 460 V, CE mark, UL	120Z0464

Miscellaneous accessories
Code no.

Electronic soft start kit, MCI 50 CM	037N0401
Mounting kit for 1 scroll compressor including 4 grommets, 4 sleeves, 4 bolts, 4 washers	8156138
Acoustic hood for scroll compressor	120Z0022
Acoustic bottom insulation for scroll compressor	120Z0353
Discharge thermostat kit	7750009

Spare parts
Code no.

Electronic motor protection module, 110-240 V	120Z0585
Mounting kit for 1 scroll compressor including 4 hexagon rigid grommets, 4 sleeves, 4 bolts, 4 washers	7777045
Oil sight glass with gaskets (black & white)	8156019
Gasket for oil sight glass (white teflon)	8156129
Terminal box 210 x 190 incl. cover	120Z0458
T block connector 60 x 75 mm	8173021

General Characteristics

Model number (on compressor nameplate)		CH290A4BBA
Code number for Singlepack*		120H1070
Code number for Industrial pack**		120H1071
Drawing number		8556140a
Suction and discharge connections		Brazed
Suction connection		1-5/8" ODF
Discharge connection		1-1/8" ODF
Oil sight glass		Threaded
IPR valve		None
Reverse rotation protection		Electronic module
Swept volume	276.2 cm ³ /rev	
Displacement @ Nominal speed	48.1 m ³ /h @ 2900 rpm	
Net weight	111 kg	
Oil charge	6.7 litre, POE - 160SZ	
Maximum system test pressure Low Side / High side	30.2 bar(g) / 45 bar(g)	
Maximum differential test pressure	37 bar	
Maximum number of starts per hour	12	
Refrigerant charge limit	13.5 kg	
Approved refrigerants	R410A	

Electrical Characteristics

Nominal voltage	380-415V/3/50Hz
Voltage range	340-457 V @ 50Hz
Winding resistance (between phases) +/- 7% at 25°C	0,52 Ω
Rated Load Amps (RLA)	44.3 A
Maximum Continuous Current (MCC)	62 A
Locked Rotor Amps (LRA)	260 A
Motor protection	Electronic protection module, 115/230 V

Recommended Installation torques

Oil sight glass	50 Nm
Power connections / Earth connection	3 Nm / 2 Nm
Mounting bolts	21 Nm

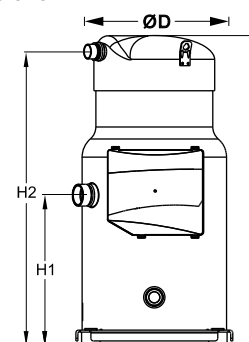
Parts shipped with compressor

Mounting kit with grommets, bolts, nuts, sleeves and washers
Electronic protection module mounted in terminal box
Initial oil charge
Installation instructions

Approvals : , ,

*Singlepack: Compressor in cardboard box

**Industrial pack: 6 Unboxed compressors on pallet (order per multiples of 6)

Dimensions


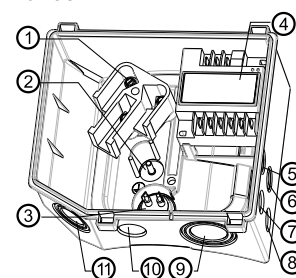
D=317.5 mm

H=682.5 mm

H1=331 mm

H2=647.5 mm

H3=- mm

Terminal box


IP54 (with cable gland)

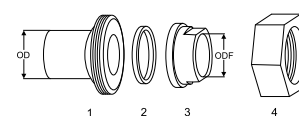
- 1: Power connection, 3 x 4.8 mm (3/16")
- 2: Earth M5
- 3: Thermistor connector
- 4: Electronic protection module
- 5: Double knock-out Ø 22.5 mm (7/8") & Ø 16.5 mm (0.65")
- 6: Double knock-out Ø 22.5 mm (7/8") & Ø 16.5 mm (0.65")
- 7: Knock-out Ø 20.7 mm (0.81")
- 8: Knock-out Ø 20.7 mm (0.81")
- 9: Triple knock-out Ø 50.8 mm (2") & Ø 43.7 mm (1.72") & Ø 34.5 mm (1.35")
- 10: Knock-out Ø 25.5 mm (1.00")
- 11: Triple knock-out Ø 40.5 mm (1.59") & Ø 32.2 mm (1.27") & Ø 25.5 mm (1")

Rotolock accessories, suction side
Code no.

Solder sleeve, P03 (2-1/4" Rotolock, 1-5/8" ODF)	8153006
Rotolock valve, V03 (2-1/4" Rotolock, 1-5/8" ODF)	8168026
Rotolock adapter (2" 1/4 Rotolock, 1" 5/8 ODF)	120Z0432
Gasket, 2-1/4"	8156133

Rotolock accessories, discharge side
Code no.

Solder sleeve, P02 (1-3/4" Rotolock, 1-1/8" ODF)	8153004
Angle adapter, C02 (1-3/4" Rotolock, 1-1/8" ODF)	8168005
Rotolock valve, V02 (1-3/4" Rotolock, 1-1/8" ODF)	8168028
Rotolock adapter (1-3/4" Rotolock, 1-1/8" ODF)	120Z0364
Gasket, 1-3/4"	8156132

Solder sleeve adapter set


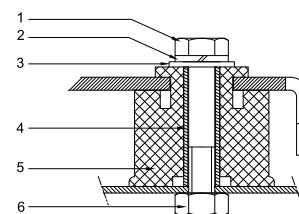
- 1: Rotolock adapter (Suc & Dis)
 2: Gasket (Suc & Dis)
 3: Solder sleeve (Suc & Dis)
 4: Rotolock nut (Suc & Dis)

Rotolock accessories, sets
Code no.

Solder sleeve adapter set, (2-1/4" Rotolock, 1-5/8" ODF), (1-3/4" Rotolock, 1" 1/8 ODF)	7765028
Valve set, V03 (2-1/4"~1-5/8"), V02 (1-3/4"~1-1/8")	7703383
Gasket set, 1-1/4", 1-3/4", 2-1/4", OSG gaskets black & white	8156013

Oil / lubricants
Code no.

POE lubricant, 160SZ, 1 litre can	7754023
POE lubricant, 160SZ, 2.5 litre can	120Z0571

Mounting kit


- 1: Bolt (4x)
 2: Lock washer (4x)
 3: Flat washer (4x)
 4: Sleeve (4x)
 5: Grommet (4x)
 6: Nut (4x)

Crankcase heaters
Code no.

Surface sump heater + bottom insulation, 56 W, 24 V, CE mark, UL	120Z0360
Surface sump heater + bottom insulation, 56 W, 230 V, CE mark, UL	120Z0376
Surface sump heater + bottom insulation, 56 W, 400 V, CE mark, UL	120Z0377
Belt type crankcase heater, 75 W, 230 V, CE mark, UL	7773108
Belt type crankcase heater, 75 W, 400 V, CE mark, UL	7773118

Miscellaneous accessories
Code no.

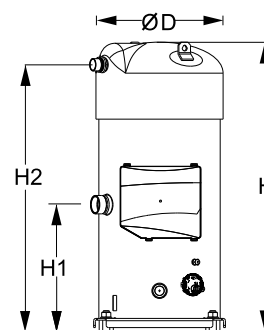
Electronic soft start kit, MCI 50 CM	037N0401
Acoustic hood for scroll compressor	120Z0022
Acoustic bottom insulation for scroll compressor	120Z0353
Discharge thermostat kit	7750009

Spare parts
Code no.

Electronic motor protection module, 110-240 V	120Z0585
Mounting kit for 1 scroll compressor including 4 grommets, 4 sleeves, 4 bolts, 4 washers	8156138
Oil sight glass with gaskets (black & white)	8156019
Gasket for oil sight glass (white teflon)	8156129
Terminal box 210 x 190 incl. cover	120Z0458
T block connector 60 x 75 mm	8173021

General Characteristics

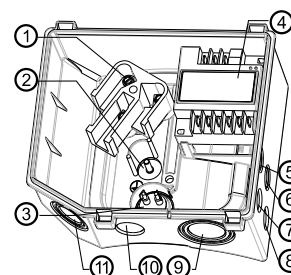
Model number (on compressor nameplate)		CH480A4ABA
Code number for Singlepack*		120H1240
Code number for Industrial pack**		120H1241
Drawing number		8556133a
Suction and discharge connections		Brazed
Suction connection		1-5/8" ODF
Discharge connection		1-3/8" ODF
Suction connection with supplied sleeve		" ODF
Oil sight glass		Threaded
Oil equalisation connection		2-1/4" Rotolock
Oil drain connection		1/4" flare
LP gauge port		Schrader
IPR valve		Yes
Reverse rotation protection		Electronic module
Swept volume	442.6 cm ³ /rev	
Displacement @ Nominal speed	77.0 m ³ /h @ 2900 rpm - 93.0 m ³ /h @ 3500 rpm	
Net weight	175 kg	
Oil charge	6.7 litre, POE - 160SZ	
Maximum system test pressure Low Side / High side	30.2 bar(g) / 45 bar(g)	
Maximum differential test pressure	37 bar	
Maximum number of starts per hour	12	
Refrigerant charge limit	17 kg	
Approved refrigerants	R410A	

Dimensions


D=333.2 mm
 H=755.3 mm
 H1=331 mm
 H2=696.5 mm
 H3=- mm

Electrical Characteristics

Nominal voltage	380-415V/3/50Hz - 460V/3/60Hz
Voltage range	340-457 V @ 50Hz - 414-506 V @ 60Hz
Winding resistance (between phases) +/- 7% at 25°C	0.231 Ω
Rated Load Amps (RLA)	72.9 A
Maximum Continuous Current (MCC)	90 A
Locked Rotor Amps (LRA)	413 A
Motor protection	Electronic protection module, 110-240 V

Terminal box


IP54 (with cable gland)

- 1: Power connection, 3 x 4.8 mm (3/16")
- 2: Earth M5
- 3: Thermistor connector
- 4: Electronic protection module
- 5: Double knock-out Ø 22.5 mm (7/8") & Ø 16.5 mm (0.65")
- 6: Double knock-out Ø 22.5 mm (7/8") & Ø 16.5 mm (0.65")
- 7: Knock-out Ø 20.7 mm (0.81")
- 8: Knock-out Ø 20.7 mm (0.81")
- 9: Triple knock-out Ø 50.8 mm (2") & Ø 43.7 mm (1.72") & Ø 34.5 mm (1.35")
- 10: Knock-out Ø 25.5 mm (1.00")
- 11: Triple knock-out Ø 40.5 mm (1.59") & Ø 32.2 mm (1.27") & Ø 25.5 mm (1")

Recommended Installation torques

Oil sight glass	50 Nm
Power connections / Earth connection	3 Nm / 2 Nm
Mounting bolts	21 Nm

Parts shipped with compressor

Mounting kit with rigid grommets, bolts, nuts, sleeves and washers
Electronic protection module mounted in terminal box
Initial oil charge
Installation instructions

Approvals : CE certified, UL certified (file SA6873), -

*Singlepack: Compressor in cardboard box

**Industrial pack: 4 Unboxed compressors on pallet (order per multiples of 4)

Rotolock accessories, suction side
Code no.

Solder sleeve, P03 (2-1/4" Rotolock, 1-5/8" ODF)	8153006
Rotolock valve, V03 (2-1/4" Rotolock, 1-5/8" ODF)	8168026
Rotolock adapter (2" 1/4 Rotolock, 1" 5/8 ODF)	120Z0432
Gasket, 2-1/4"	8156133

Rotolock accessories, discharge side
Code no.

Solder sleeve, P10 (1-3/4" Rotolock, 1-3/8" ODF)	8153003
Rotolock valve, V10 (1-3/4" Rotolock, 1-3/8" ODF)	8168022
Rotolock adapter (1" 3/4 Rotolock, 1" 3/8 ODF)	120Z0431
Gasket, 1-3/4"	8156132

Rotolock accessories, sets
Code no.

Solder sleeve adapter set, (2-1/4" Rotolock, 1-5/8" ODF), (1-3/4" Rotolock, 1" 3/8 ODF)	120Z0504
Valve set, V03 (2-1/4"~1-5/8"), V10 (1-3/4"~1-3/8")	120Z0547
Gasket set, 1-1/4", 1-3/4", 2-1/4", OSG gaskets black & white	8156013

Oil / lubricants
Code no.

POE lubricant, 160SZ, 1 litre can	7754023
POE lubricant, 160SZ, 2.5 litre can	120Z0571

Crankcase heaters
Code no.

Surface sump heater + bottom insulation, 56 W, 24 V, CE mark, UL	120Z0360
Surface sump heater + bottom insulation, 56 W, 230 V, CE mark, UL	120Z0376
Surface sump heater + bottom insulation, 56 W, 400 V, CE mark, UL	120Z0377
Surface sump heater + bottom insulation, 56 W, 460 V, CE mark, UL	120Z0378

Miscellaneous accessories
Code no.

Electronic soft start kit MCD201-055-T6-CV1	175G5205
Mounting kit for 1 scroll compressor including 4 grommets, 4 sleeves, 4 bolts, 4 washers	8156138
Acoustic hood for scroll compressor	120Z0022
Acoustic bottom insulation for scroll compressor	120Z0353
Mounting for 1 scroll compressor including 4 triangle rigid spacer, 4 sleeves, 4 bolts, 4 washers	120Z0495

Spare parts
Code no.

Electronic motor protection module, 110-240 V	120Z0585
Mounting kit for 1 scroll compressor including 4 hexagon rigid grommets, 4 sleeves, 4 bolts, 4 washers	7777045
Oil sight glass with gaskets (black & white)	8156019
Gasket for oil sight glass (white teflon)	8156129
Terminal box 210 x 190 incl. cover	120Z0458
T block connector 80 x 80 mm	8173331