

FOR RETURN

Document No.	
--------------	--

DATE : 2006.08.22

CUSTOMER : ZYMBO

DRAFT	CHECK	APPROVE

FOR APPROVAL

SPECIFICATION OF ROTARY COMPRESSOR

MODEL : G4A080JUAEP

FOR CUSTOMER'S APPROVAL			
APPROVAL	<u>YES</u> , NO		
DATE OF APPROVAL			
SIGNATURE			
COMPANY NAME			
REMARKS			
ACCESSORIES PARTS			
ITEM	PART NO	Q'TY	REMARKS
COVER TERMIANL	DB63-00762A	1	
NUT	6021-001142	1	
GASKET	DB63-01416A	1	
SPRING OLP	DB61-01897A	1	
GROMMET- ISOLATOR	DB63-00763A	3	
OVERLOAD PROTECTOR	DB35-00041X	1	MRA12056-12007

Please approve compressor specification, out-drawings, accessories and packing specifications.

SUZHOU SAMSUNG ELECTRONICS CO., LTD
ROTRAY COMPRESSOR DIV

ROTARY COMPRESSOR SPECIFICATION SHEET



三星电子

MODEL : G4A080JUAEP	SPEC. NO _____ :		
	DRAFT	CHECK	APPROVE

1.APPLICATION

H/P & Cooling Type Air conditioner

Rated Voltage & Frequency 220-240V 1Φ 50Hz

Refrigerant R410A

2.COMPRESSOR DATA

Pump Type Rolling Piston Type

Displacement 9.74 cc/rev

Oil Type FREOL α68ES-T (POE)

Initial Charged 280 cc

Net Weight(Included Oil) 10.8 kg

Painting Black

Suction Tube I.D 12.85 mm

Discharge Tube I.D 8.15 mm

3.MOTOR DATA

Motor Type Permanent Split Capacitor

Locked Rotor Amps 19.0 Amp at 240 V

Motor Resistance Main Winding :4.25±10% Ohm at 20°C(SSEC MOTOR)

ROTARY COMPRESSOR SPECIFICATION SHEET



三星电子

MODEL : G4A080JUAEP	SPEC. NO _____ :		
	DRAFT	CHECK	APPROVE

5. NOMINAL PERFORMANCE

Voltage (V)	240	-	-	Note
Cooling Capa. (Btu/h)	8,350	-	-	-
Running Current (A)	3.65	-	-	-
Input (W)	835	-	-	-
EER (Btu/W.h)	10.0	-	-	-
Noise (dBA)	54	-	-	Average of 4 point measurement at 90cm from surface
Vibration (µm)	100	-	-	Larger tangential vibration displacement at 90° & 180° points

RATING CONDITION

Condensing Temperature 54.4°C (130°F)

Evaporating Temperature 7.2°C (45°F)

Return Gas Temperature 35.0°C (95°F)

Liquid Temperature 46.1°C (115°F)

Ambient Temperature 35.0°C (95°F)

Compressor Cooling 1 m/s air cooling

* Return Gas Temp. for Noise & Vibration is 15.0°C (59°F)

ROTARY COMPRESSOR

APPLICATION SHEET



三星电子

MODEL : G4A080JUAEP	SPEC. NO _____ :		
	DRAFT	CHECK	APPROVE

No	Item	Operational standards and limits
1	Quantity of refrigerant charge	Split type : Max. 680 g/Window type : Max. 600g (Need to the special discussion in case of excess)
2	Condensing temp (pressure)	28°C~65°C(17.20~42.30 kg/cm ² .G)
3	Evaporating temp (pressure)	-25°C~+12.7°C(2.33~10.90 kg/cm ² .G)
4	Compression ratio	2 ~ 8
5	Suction gas superheat	Normal case: sufficient superheat is preferred for preventing liquid flood back Abnormal case: liquid flood back should not be abnormal current fluctuation & abnormal noise
6	Discharge gas temp	Max.115°C
7	Motor winding temp	Max.130°C
8	Bottom shell temperature	Min. 5°C higher than condensing temp
9	Abnormal pressure rise	Max.70.0 kg/cm ² .G
	*Hydrostatic pressure rise	Max.165.0 kg/cm ² .G
10	On-off cycle	On/Off=Min.3 Minutes/Min.3 Minutes=>total 200,000 cycles
11	Oil level	Steady-state: higher than 5mm base on bottom plane of the cylinder Inordinate-state: higher than bottom plane of bottom flange
12	Vibration of tubing	Tubing vibration displacement :Max 0.8 mm(±10% of rate voltage) If the resonance of the pipe can be checked, above condition is not necessary
13	Tube stress	Starting & stop: less than 3.5 kg/mm ² G Normal operating: less than 1.25 kg/mm ² G
14	Spacing of tubing	Between tube and moving parts: min.13.0 mm Between tube and non-moving parts: Min. 10.0mm
15	Length of tubing	Max.15m between indoor and outdoor section
16	Height difference of tubing	Max.7m between indoor and outdoor section
17		

ROTARY COMPRESSOR APPLICATION ENVELOPE



三星电子

SPEC. NO _____ :		
DRAFT	CHECK	APPROVE

MODEL : G4A080JUAEP



ROTARY COMPRESSOR PERFORMANCE CURVE



三星电子

MODEL : G4A080JUAEP

SPEC. NO

:

DRAFT	CHECK	APPROVE

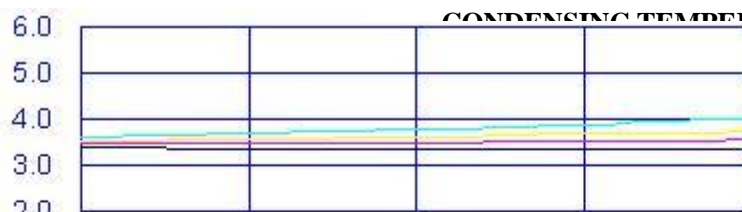
BASED ON

SUCTION TEMP. : 35°C (95°F)

SUB COOL TEMP. : 8.3°C (15°F)

AMBIENT TEMP. : 35°C (95°F)

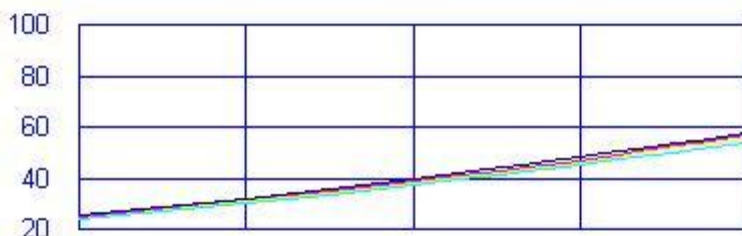
RUNNING
CURRENT
[A]



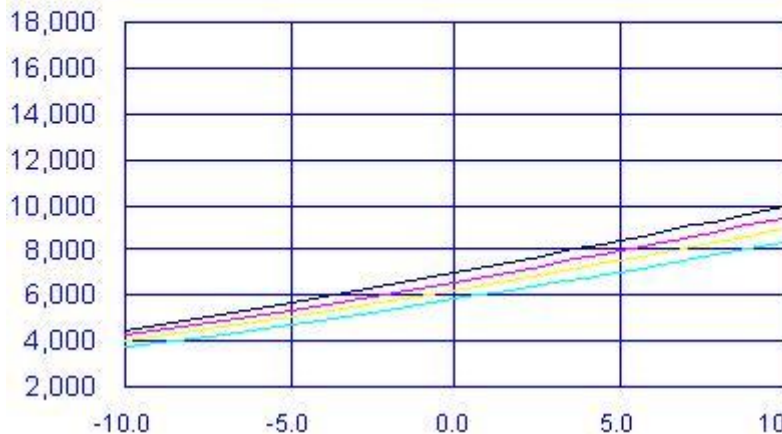
INPUT
POWER
[W]



FLOW
RATE
[kg/h]



COOLING
CAPACITY
[Btu/h]



(14) (23) (32) (41) (50)

EVAPOATING TEMPERATURE [°C (°F)]

ROTARY COMPRESSOR OUTDRAWING DIMENSION



三星电子

MODEL : G4A080JUAEP

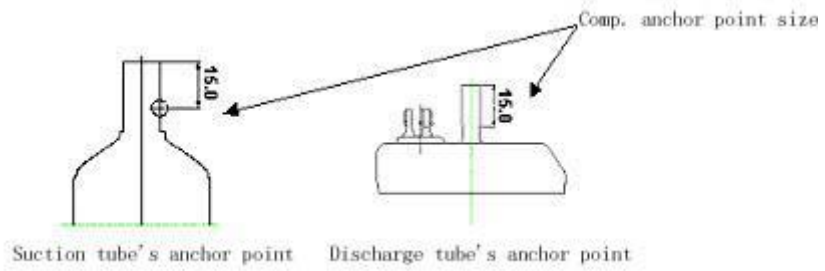
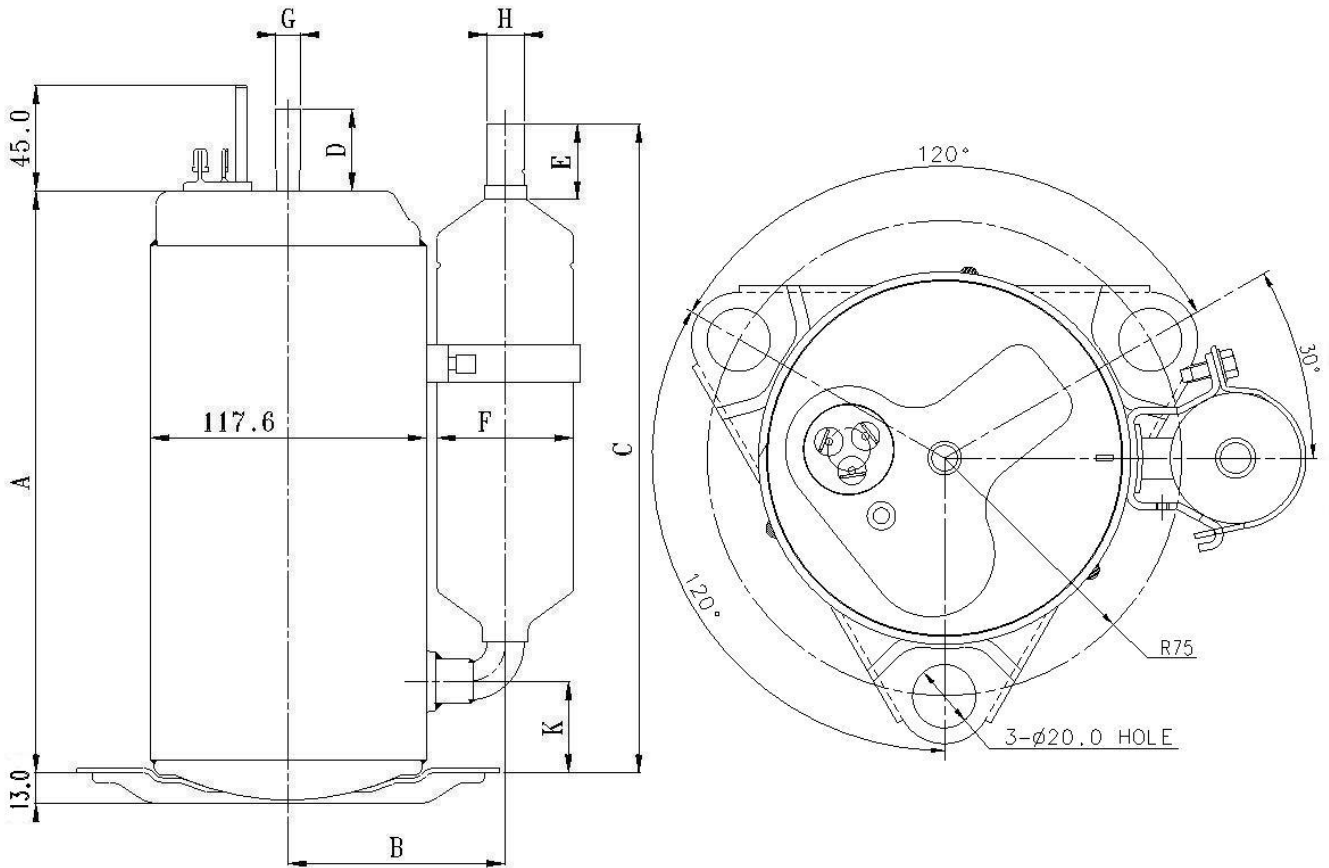
SPEC. NO

:

DRAFT

CHECK

APPROVE



(UNIT: mm, () inch)

MODEL NO	DEMESIONS						ACCUM (O , D) F	TUBE (I.D.)	
	A	B	C	D	E	K		G	H
G4A080JUAEP	220.13 (8.67)	92.46±3.0 (3.64)	250.7 (9.87)	35.0 (1.38)	30.0 (1.18)	27.6 (1.09)	58.4 (2.29)	8.15±0.15 (0.32)	12.85±0.15 (0.51)

ROTARY COMPRESSOR ACCESSORY DIMENSION



三星电子

MODEL : G4A080JUAEP

SPEC. NO

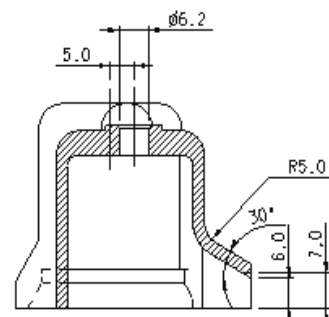
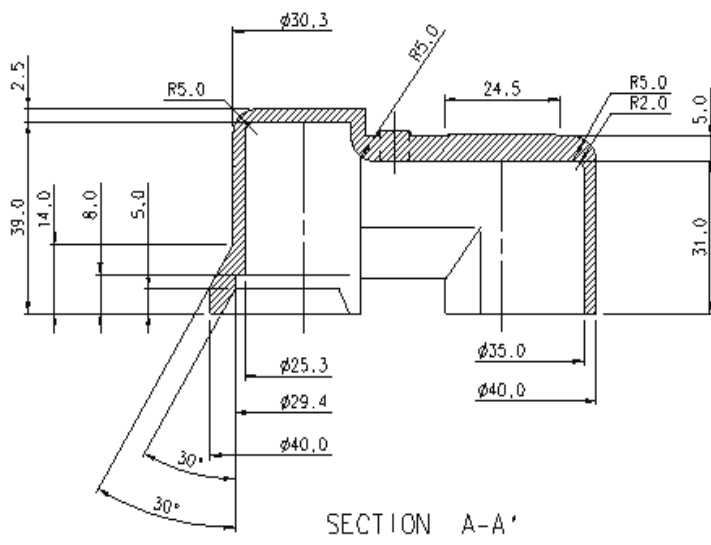
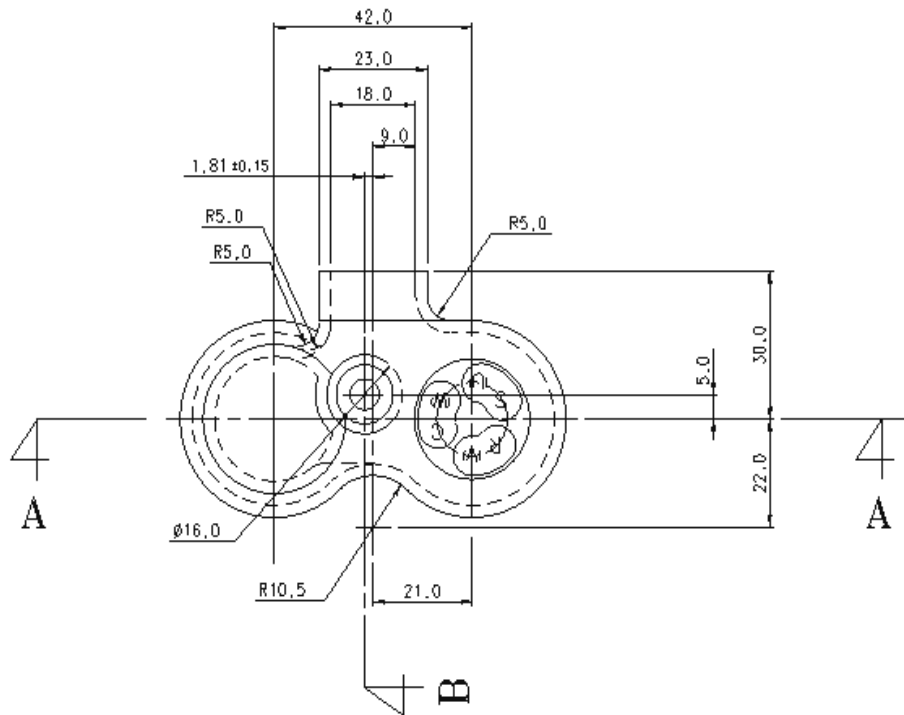
:

DRAFT

CHECK

APPROVE

ITEM	TERMINAL COVER	PART NO	DB63-00762A	Q'TY	1	REMARK
------	----------------	---------	-------------	------	---	--------



SECTION B-B'

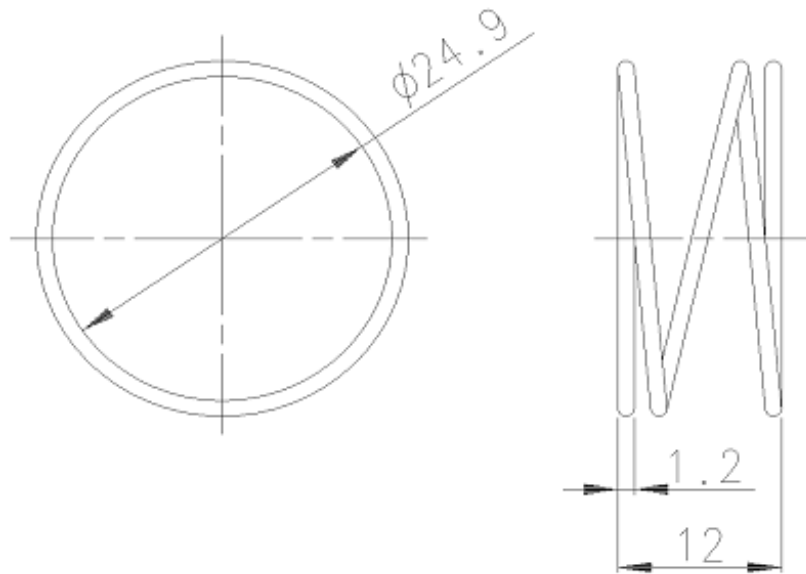
ROTARY COMPRESSOR ACCESSORY DIMENSION



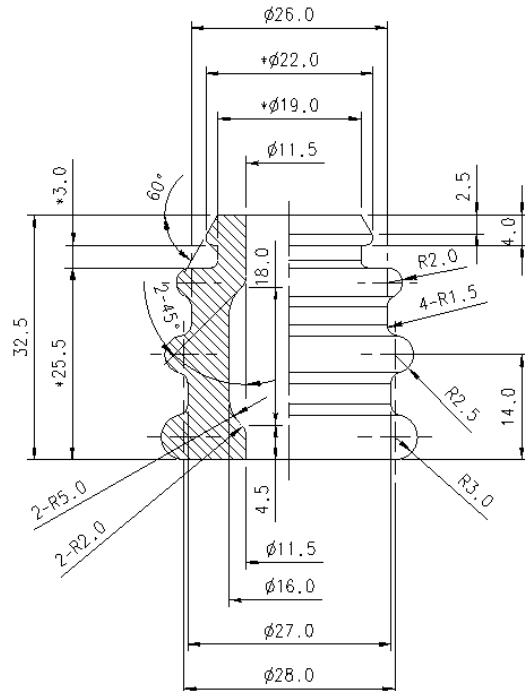
三星电子

MODEL : G4A080JUAEP	SPEC. NO : _____		
	DRAFT	CHECK	APPROVE

ITEM	SPRING OLP	PART NO	DB61-01897A	Q'TY	1	REMARK
------	------------	---------	-------------	------	---	--------



ITEM	GROMMET-ISOLATOR	PART NO	DB63-00763A	Q'TY	3	REMARK
------	------------------	---------	-------------	------	---	--------



ROTARY COMPRESSOR

ACCESSORY DIMENSION



三星电子

MODEL : G4A080JUAEP

SPEC. NO

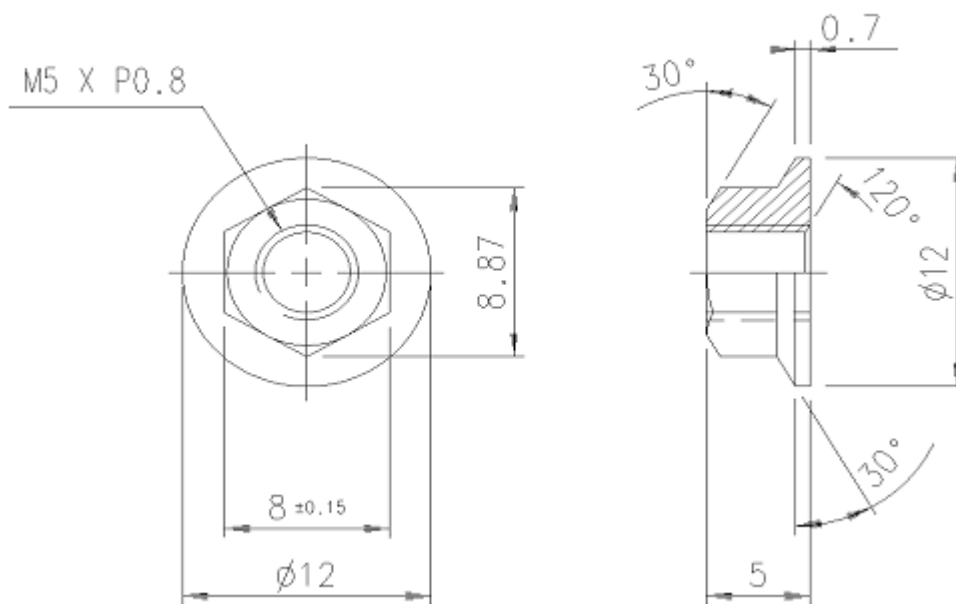
:

DRAFT

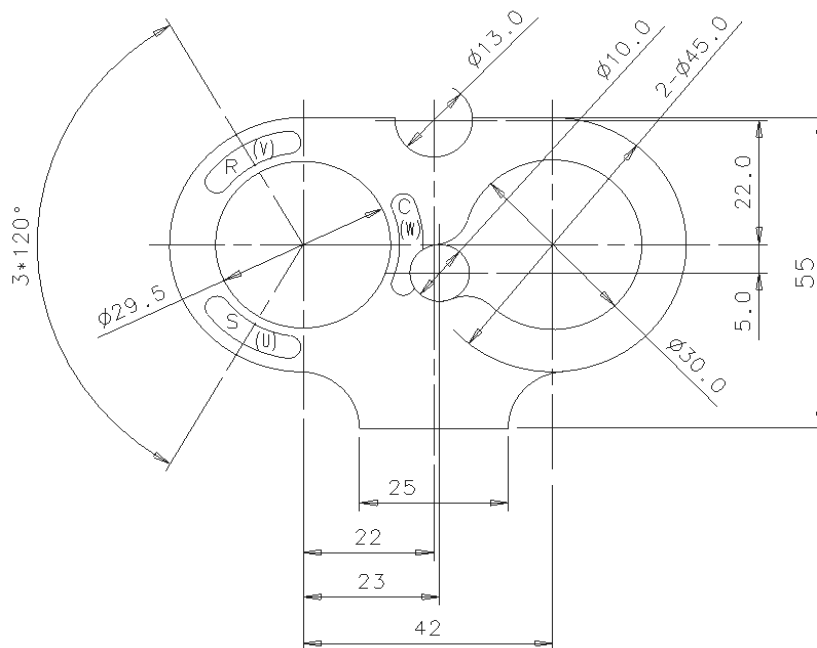
CHECK

APPROVE

ITEM	NUT	PART NO	6021-001142	Q'TY	1	REMARK
------	-----	---------	-------------	------	---	--------



ITEM	GASKET	PART NO	DB63-01416A	Q'TY	1	REMARK
------	--------	---------	-------------	------	---	--------



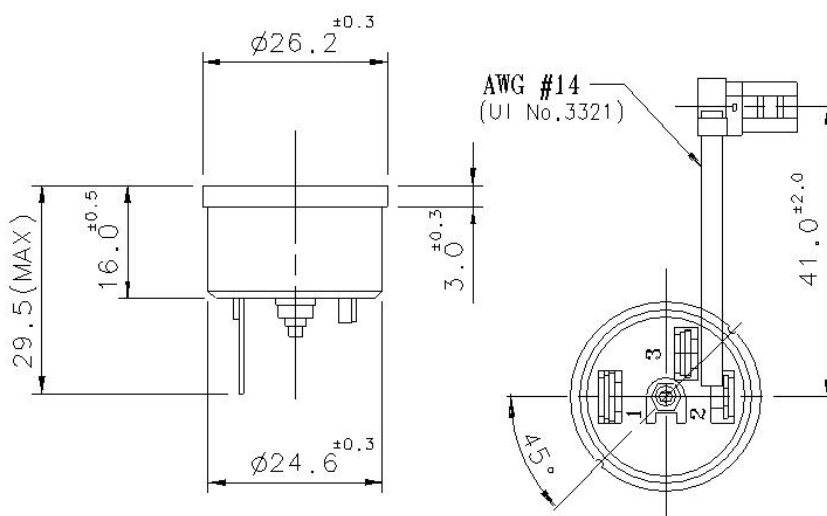
ROTARY COMPRESSOR ACCESSORIES DIMENSION



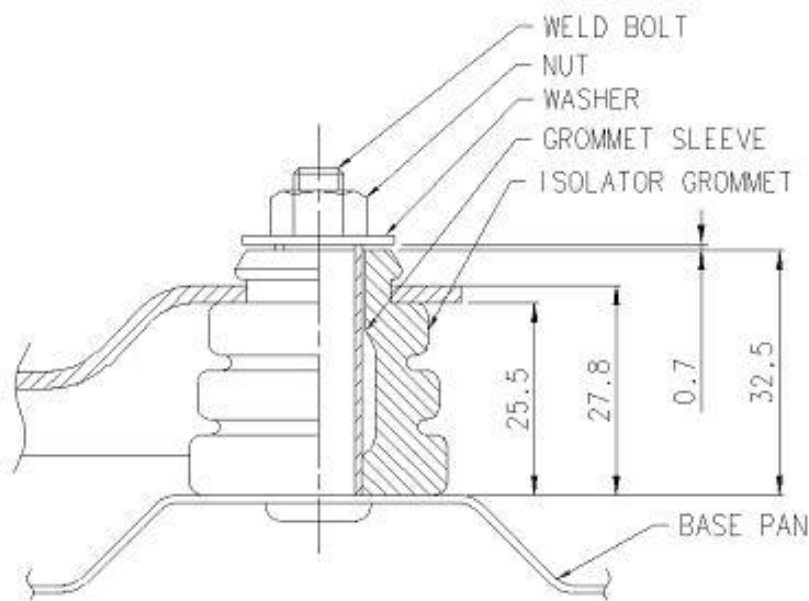
三星电子

MODEL : G4A080JUAEP	SPEC. NO : _____		
	DRAFT	CHECK	APPROVE

ITEM	OVERLOAD PROTECTOR (OLP)	PART NO	DB35-00041X	Q'TY	1	REMARK	MRA12056-12007
------	--------------------------	---------	-------------	------	---	--------	----------------



ITEM	MOUNTING TYPE (1 FOOT TYPE)	PART NO		Q'TY	1	REMARK	
------	-----------------------------	---------	--	------	---	--------	--



ROTARY COMPRESSOR WIRING DIAGRAM



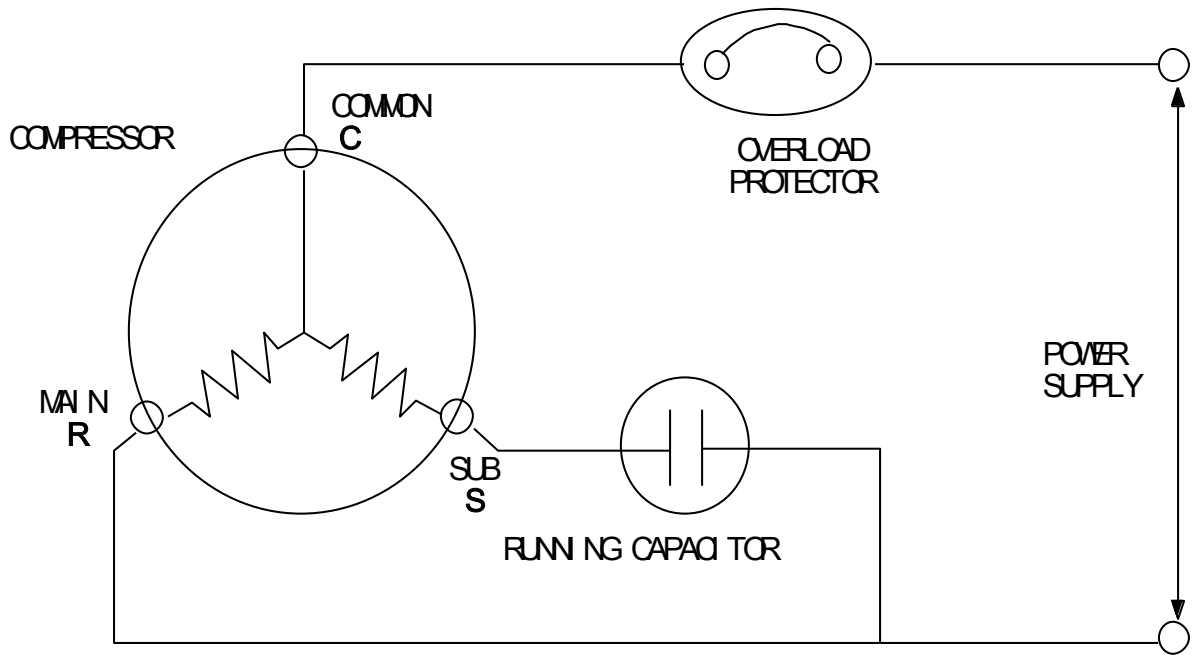
三星电子

MODEL : G4A080JUAEP

SPEC. NO

:

DRAFT	CHECK	APPROVE



STANDARD EXPORT PACKING IN 20 FEET CONTAINER



三星电子

MODEL : G4A080JUAEP	SPEC. NO _____ :		
	DRAFT	CHECK	APPROVE

Frame	Cooling Capacity (Btu/h)	Compressor Q'ty / Carton		Carton Q'ty (20Ft)		Accessory Box ⑤ (Carton)	Loading Quantity ⑥ (pcs)
		1step ① <small>(pcs)</small>	2 step ② <small>(pcs)</small>	1 step ③ <small>(Carton)</small>	2 step ④ <small>(Carton)</small>		
G4A	7.6-13.5 K	36	72	8	16	6	1440

Total Compressor Q'ty = ① * ③ + ② * ④ = ⑥ (1440 pcs)

