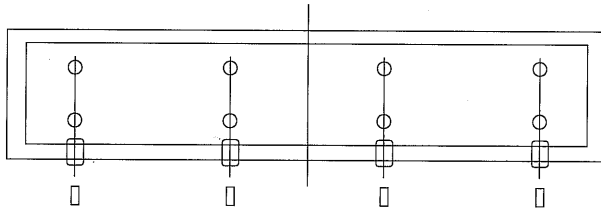
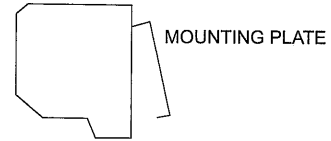


# INSTALLATION

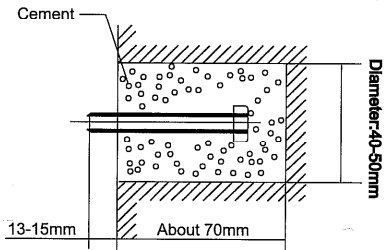
1. Unscrew the mounting plate and take it off. (Fig. 1、 Fig. 2)
2. Drill a hole as the instruction. Then put into the bolt and fix it with cement. (Fig. 3)
3. Hanging on the mounting plate and ensure fix it. (Fig. 4)
4. Installing the machine onto the mounting plate and ensure the safety, then fix it tighten with screws. (Fig. 5)



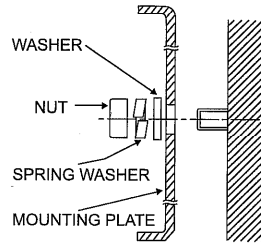
(Fig.1)



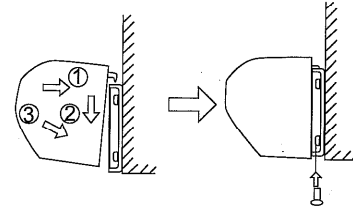
(Fig.2)



(Fig.3)



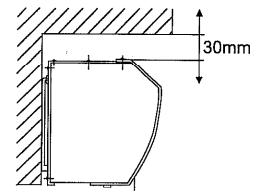
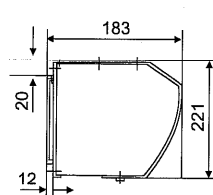
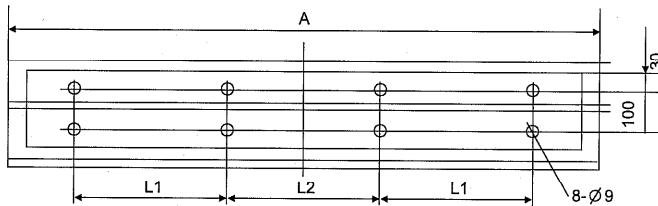
(Fig.4)



(Fig.5)

## 贯流式风幕机 / Cross-Flow Type Air Curtain

### DIAGRAM



The distance between the unit and the ceiling must reserve at least 30mm.

[Dimension : mm]

Model No.	A	L1	L2
900mm	900	270	300
1000mm	1000	320	300
1200mm	1200	420	300
1500mm	1500	570	300