

Model: ZR61KCE-TFD

Data

Type: Hermetic piston compressors

Producer: Copeland

Series: ZR

Model: ZR61KCE-TFD

Technical data

Nominal motor power [HP]:	5
Displacement [m ³ /h]:	14,4
Sound pressure level :	60
Gross/Net weight [kg]:	41/38
Oil charge [dm ³]:	1,9

Electrical data

Power supply [V/~/Hz]:	380-420/3/50Hz
Locked rotor current [A]:	65,5
Max. operating current [A]:	12,4
Winding resistance [Ω]:	2,75

Connections

	<u>milimeters</u>	<u>inches</u>
Suction Rotolock valve connection:		-
Discharge Rotolock valve connection:		-
Suction connection with supplied sleeve:		7/8"
Discharge connection with supplied sleeve:		1/2"

Model: ZR61KCE-TFD

Capacity

R407C

Cooling capacity [kW]

t_c \ t_e	-20	-15	-10	-5	0	5	10	15
30	4.87	6.38	8.18	10.30	12.78	15.65	18.96	22.75
35	4.53	6.00	7.73	9.78	12.17	14.95	18.14	-
40	4.17	5.58	7.25	9.21	11.50	14.17	17.24	-
45	-	5.15	6.73	8.60	10.79	13.33	16.26	-
50	-	-	6.20	7.96	10.03	12.43	15.22	-
55	-	-	-	7.30	9.23	11.50	14.13	-
60	-	-	-	-	8.41	10.52	12.99	-
65	-	-	-	-	-	9.52	11.81	-

Power input [kW]

t_c \ t_e	-20	-15	-10	-5	0	5	10	15
30	2.44	2.46	2.48	2.49	2.52	2.58	2.68	2.85
35	2.73	2.77	2.80	2.81	2.83	2.87	2.95	-
40	3.03	3.10	3.14	3.16	3.18	3.21	3.26	-
45	-	3.45	3.52	3.55	3.57	3.59	3.63	-
50	-	-	3.92	3.97	4.00	4.02	4.05	-
55	-	-	-	4.42	4.47	4.50	4.52	-
60	-	-	-	-	4.98	5.02	5.05	-
65	-	-	-	-	-	5.59	5.64	-

Model: ZR61KCE-TFD

Capacity

Current [A]

$t_c \setminus t_e$	-20	-15	-10	-5	0	5	10	15
30	6.12	6.15	6.19	6.23	6.28	6.33	6.39	6.46
35	6.38	6.41	6.44	6.48	6.53	6.58	6.64	-
40	6.71	6.74	6.77	6.81	6.85	6.91	6.96	-
45	-	7.15	7.18	7.21	7.26	7.30	7.36	-
50	-	-	7.66	7.69	7.73	7.78	7.83	-
55	-	-	-	8.24	8.28	8.32	8.38	-
60	-	-	-	-	8.90	8.95	9.00	-
65	-	-	-	-	-	9.64	9.69	-

Mass flow [kg/s]

$t_c \setminus t_e$	-20	-15	-10	-5	0	5	10	15
30	102.38	132.24	166.81	206.70	252.54	304.93	364.50	431.87
35	100.02	130.17	165.05	205.27	251.46	304.22	364.18	-
40	97.14	127.44	162.48	202.89	249.29	302.28	362.50	-
45	-	124.13	159.20	199.66	246.12	299.21	359.53	-
50	-	-	155.30	195.67	242.06	295.09	355.38	-
55	-	-	-	191.00	237.18	290.02	350.14	-
60	-	-	-	-	231.58	284.09	343.90	-
65	-	-	-	-	-	277.39	336.75	-

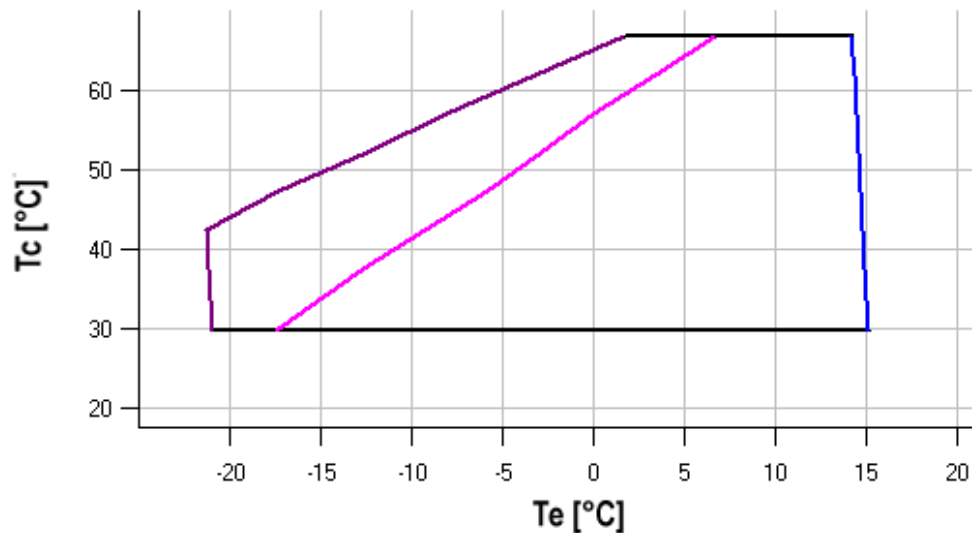
Model: ZR61KCE-TFD

Capacity

C.O.P. [W/W]

$t_c \setminus t_e$	-20	-15	-10	-5	0	5	10	15
30	2.00	2.59	3.31	4.14	5.08	6.08	7.07	7.98
35	1.66	2.16	2.77	3.48	4.30	5.21	6.16	-
40	1.38	1.80	2.31	2.91	3.62	4.42	5.29	-
45	-	1.49	1.92	2.42	3.02	3.71	4.48	-
50	-	-	1.58	2.01	2.51	3.09	3.76	-
55	-	-	-	1.65	2.07	2.56	3.12	-
60	-	-	-	-	1.69	2.09	2.57	-
65	-	-	-	-	-	1.70	2.09	-

Application range



- Maximum evaporating temperature
- 25°C suction gas temperature
- 10K gas overheat

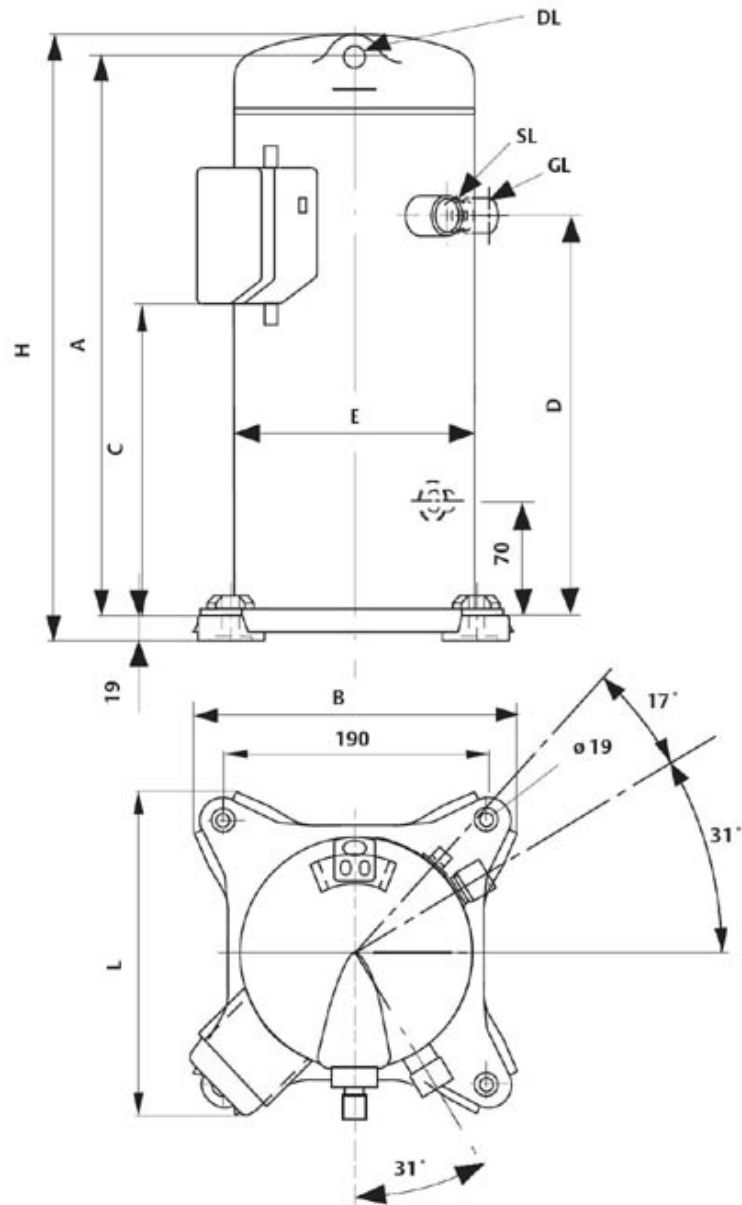
Operating conditions: 10K suction superheat, 0K subcooling

t_c - Condensing temperature [°C]

t_e - Evaporating temperature [°C]

Model: ZR61KCE-TFD

Dimensions



A	410 mm
B	240 mm
C	233 mm
D	297 mm
E	165 mm
H	457 mm
L	247 mm

Model: ZR61KCE-TFD

Image

